



DEPARTMENT OF THE ARMY  
U.S. ARMY CORPS OF ENGINEERS, ST. PAUL DISTRICT  
ST. PAUL DISTRICT OFFICE  
332 MINNESOTA STREET SUITE E1500  
ST. PAUL MINNESOTA 55101

CEMVP-RD

22 April 2026

MEMORANDUM FOR RECORD

SUBJECT: US Army Corps of Engineers (Corps) Approved Jurisdictional Determination in accordance with the “Revised Definition of ‘Waters of the United States’”; (88 FR 3004 (January 18, 2023) as amended by the “Revised Definition of ‘Waters of the United States’; Conforming” (8 September 2023) ,<sup>1</sup> MVP-2026-00406 MFR 1-1.

BACKGROUND. An Approved Jurisdictional Determination (AJD) is a Corps document stating the presence or absence of waters of the United States on a parcel or a written statement and map identifying the limits of waters of the United States on a parcel. AJDs are clearly designated appealable actions and will include a basis of JD with the document.<sup>2</sup> AJDs are case-specific and are typically made in response to a request. AJDs are valid for a period of five years unless new information warrants revision of the determination before the expiration date or a District Engineer has identified, after public notice and comment, that specific geographic areas with rapidly changing environmental conditions merit re-verification on a more frequent basis.<sup>3</sup>

On January 18, 2023, the Environmental Protection Agency (EPA) and the Department of the Army (“the agencies”) published the “Revised Definition of ‘Waters of the United States,’” 88 FR 3004 (January 18, 2023) (“2023 Rule”). On September 8, 2023, the agencies published the “Revised Definition of ‘Waters of the United States’; Conforming”, which amended the 2023 Rule to conform to the 2023 Supreme Court decision in *Sackett v. EPA*, 598 U.S., 143 S. Ct. 1322 (2023) (“*Sackett*”).

This Memorandum for Record (MFR) constitutes the basis of jurisdiction for a Corps AJD as defined in 33 CFR §331.2. For the purposes of this AJD, we have relied on Section 10 of the Rivers and Harbors Act of 1899 (RHA),<sup>4</sup> the 2023 Rule as amended, as well as other applicable guidance, relevant case law, and longstanding practice in evaluating jurisdiction.

1. SUMMARY OF CONCLUSIONS.

---

<sup>1</sup> While the Revised Definition of “Waters of the United States”; Conforming had no effect on some categories of waters covered under the CWA, and no effect on any waters covered under RHA, all categories are included in this Memorandum for Record for efficiency.

<sup>2</sup> 33 CFR 331.2.

<sup>3</sup> Regulatory Guidance Letter 05-02.

<sup>4</sup> USACE has authority under both Section 9 and Section 10 of the Rivers and Harbors Act of 1899 but for convenience, in this MFR, jurisdiction under RHA will be referred to as Section 10.

CEMVP-RD

SUBJECT: 2023 Rule, as amended, Approved Jurisdictional Determination in Light of *Sackett v. EPA*, 143 S. Ct. 1322 (2023), MVP-2026-00406

- a. Provide a list of each individual feature within the review area and the jurisdictional status of each one (i.e., identify whether each feature is/is not a water of the United States and/or a navigable water of the United States).

- i. Wetland 2 (W-2) (0.06 acres); non-jurisdictional

## 2. REFERENCES.

- a. "Revised Definition of 'Waters of the United States,'" 88 FR 3004 (January 18, 2023) ("2023 Rule")
- b. "Revised Definition of 'Waters of the United States'; Conforming" 88 FR 61964 (September 8, 2023))
- c. *Sackett v. EPA*, 598 U.S. 651, 143 S. Ct. 1322 (2023)
- d. Memorandum To the Field Between the U.S. Department Of The Army, U.S. Army Corps Of Engineers And The U.S. Environmental Protection Agency Concerning The Proper Implementation Of 'Continuous Surface Connection' Under The Definition Of "Waters Of The United States" Under The Clean Water Act" (March 12, 2025)

## 3. REVIEW AREA.

- a. Project Are Size (in acres): 0.5 acre
- b. Location Description: The project/review area is located in Section 09, Township 001N, Range 006E, Green County, Wisconsin.
- c. Center Coordinates of the Project Site (in decimal degrees)  
Latitude: 42.578000 Longitude: -89.798140
- d. Nearest City or Town: Browntown
- e. County: Green
- f. State: Wisconsin
- g. Other associated Jurisdictional Determinations (including outcomes): N/A

## 4. NEAREST TRADITIONAL NAVIGABLE WATER (TNW), THE TERRITORIAL SEAS, OR INTERSTATE WATER TO WHICH THE AQUATIC RESOURCE IS CONNECTED. N/A

## 5. FLOWPATH FROM THE SUBJECT AQUATIC RESOURCES TO A TNW, THE TERRITORIAL SEAS, OR INTERSTATE WATER. N/A

6. SECTION 10 JURISDICTIONAL WATERS<sup>5</sup>: Describe aquatic resources or other features within the review area determined to be jurisdictional in accordance with Section 10 of the Rivers and Harbors Act of 1899. Include the size of each aquatic resource or other feature within the review area and how it was determined to be jurisdictional in accordance with Section 10.<sup>6</sup>  
N/A
  
7. SECTION 404 JURISDICTIONAL WATERS: Describe the aquatic resources within the review area that were found to meet the definition of waters of the United States in accordance with the 2023 Rule as amended, consistent with the Supreme Court's decision in *Sackett*. List each aquatic resource separately, by name, consistent with the naming convention used in section 1, above. Include a rationale for each aquatic resource, supporting that the aquatic resource meets the relevant category of "waters of the United States" in the 2023 Rule as amended. The rationale should also include a written description of, or reference to a map in the administrative record that shows, the lateral limits of jurisdiction for each aquatic resource, including how that limit was determined, and incorporate relevant references used. Include the size of each aquatic resource in acres or linear feet and attach and reference related figures as needed. N/A
  - a. Traditional Navigable Waters (TNWs) (a)(1)(i): N/A
  - b. The Territorial Seas (a)(1)(ii): N/A
  - c. Interstate Waters (a)(1)(iii): N/A
  - d. Impoundments (a)(2): N/A
  - e. Tributaries (a)(3): N/A
  - f. Adjacent Wetlands (a)(4): N/A
  - g. Additional Waters (a)(5): N/A

---

<sup>5</sup> 33 CFR 329.9(a) A waterbody which was navigable in its natural or improved state, or which was susceptible of reasonable improvement (as discussed in § 329.8(b) of this part) retains its character as "navigable in law" even though it is not presently used for commerce, or is presently incapable of such use because of changed conditions or the presence of obstructions.

<sup>6</sup> This MFR is not to be used to make a report of findings to support a determination that the water is a navigable water of the United States. The district must follow the procedures outlined in 33 CFR part 329.14 to make a determination that water is a navigable water of the United States subject to Section 10 of the RHA.

## 8. NON-JURISDICTIONAL AQUATIC RESOURCES AND FEATURES

- a. Describe aquatic resources and other features within the review area identified in the 2023 Rule as amended as not “waters of the United States” even where they otherwise meet the terms of paragraphs (a)(2) through (5). Include the type of excluded aquatic resource or feature, the size of the aquatic resource or feature within the review area and describe how it was determined to meet one of the exclusions listed in 33 CFR 328.3(b).<sup>7</sup> N/A
- b. Describe aquatic resources and features within the review area that were determined to be non-jurisdictional because they do not meet one or more categories of waters of the United States under the 2023 Rule as amended (e.g., tributaries that are non-relatively permanent waters; non-tidal wetlands that do not have a continuous surface connection to a jurisdictional water).

Wetland 2 (0.06 acres) is not a TNW, territorial sea, or interstate water and therefore is not an (a)(1) water. Topographic maps w/Lidar and Google Earth aerial imagery indicate that Wetland 2 is a depressional wetland, surrounded by upland. The wetland does not physically abut a relatively permanent paragraph (a)(2) impoundment or a jurisdictional (a)(3) tributary and is not separated from a jurisdictional water by a natural berm, bank, dune, or similar natural landform. The wetland is located approximately 0.3 miles east of Skinner Creek, the nearest Relatively Permanent Water (RPW) located west of the review area. However, there are no ditches, swales, pipes, or culverts that connect this wetland to a downstream jurisdictional water. The wetland is nontidal and does not have a continuous surface connection to a relatively permanent jurisdictional water and as such does not meet the definition of adjacent and cannot be evaluated as a (a)(4) adjacent wetland; therefore, Wetland 2 is not jurisdictional under the 2023 Revised Definition of ‘Waters of the United States’; Conforming” 88 FR 61964 Final Rule.

9. DATA SOURCES. List sources of data/information used in making determination. Include titles and dates of sources used and ensure that information referenced is available in the administrative record.
  - a. Wetland Delineation Report from Heartland Ecological Group Inc. (dated 13 March 2025)
  - b. LiDAR 2'-contours, Green County, WI (included with Delineation Report)

---

<sup>7</sup> 88 FR 3004 (January 18, 2023)

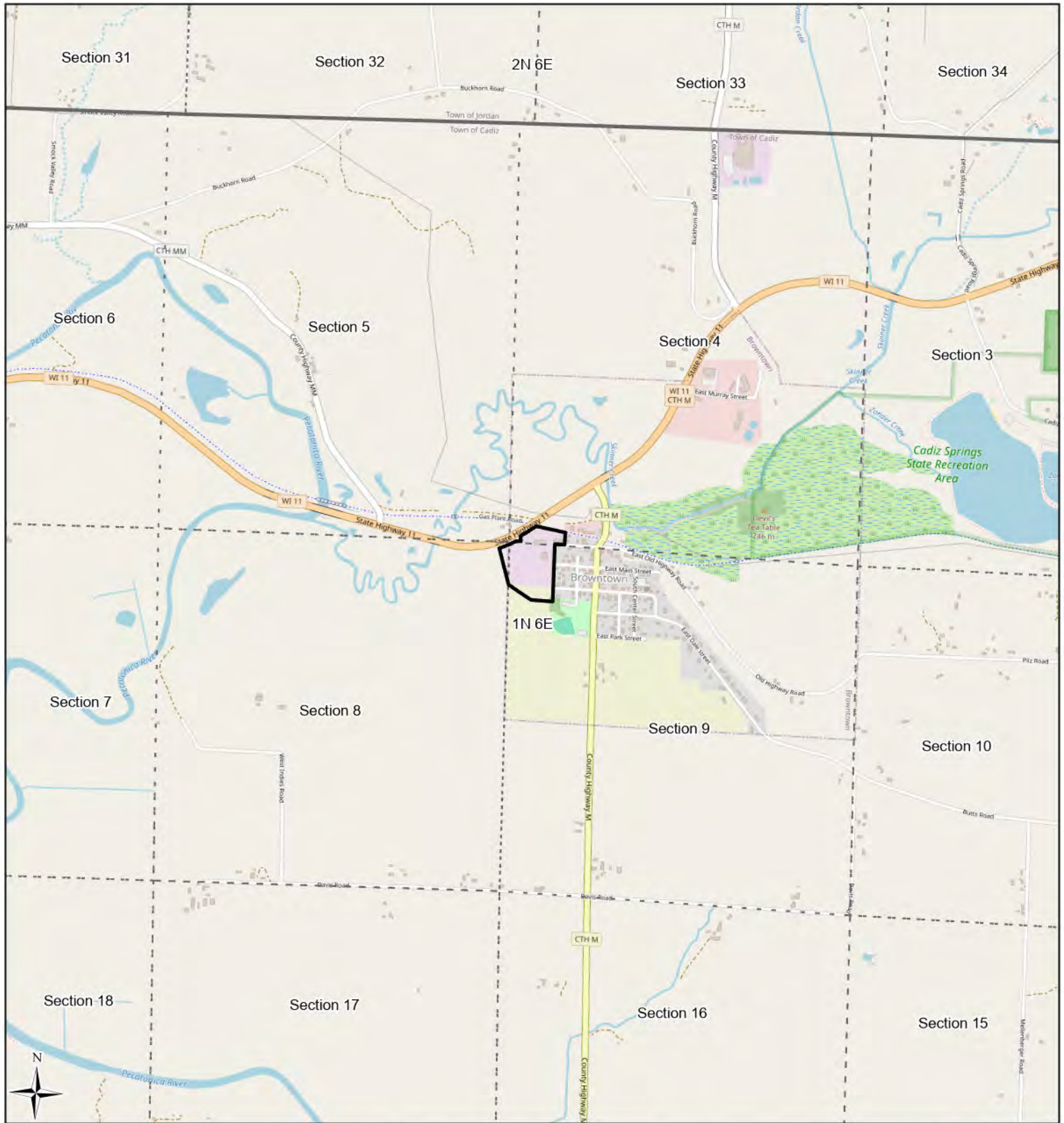
CEMVP-RD

SUBJECT: 2023 Rule, as amended, Approved Jurisdictional Determination in Light of *Sackett v. EPA*, 143 S. Ct. 1322 (2023), MVP-2026-00406

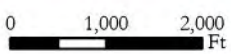
- c. Wisconsin Wetland Inventory Map (dated 13 March 2025)
- d. Offsite aerial imagery review from Google Earth (included with Delineation Report)

10. OTHER SUPPORTING INFORMATION. N/A

11. NOTE: The structure and format of this MFR were developed in coordination with the EPA and Department of the Army. The MFR's structure and format may be subject to future modification or may be rescinded as needed to implement additional guidance from the agencies; however, the approved jurisdictional determination described herein is a final agency action.



- Study Area (17.00 ac)
- Township
- Section

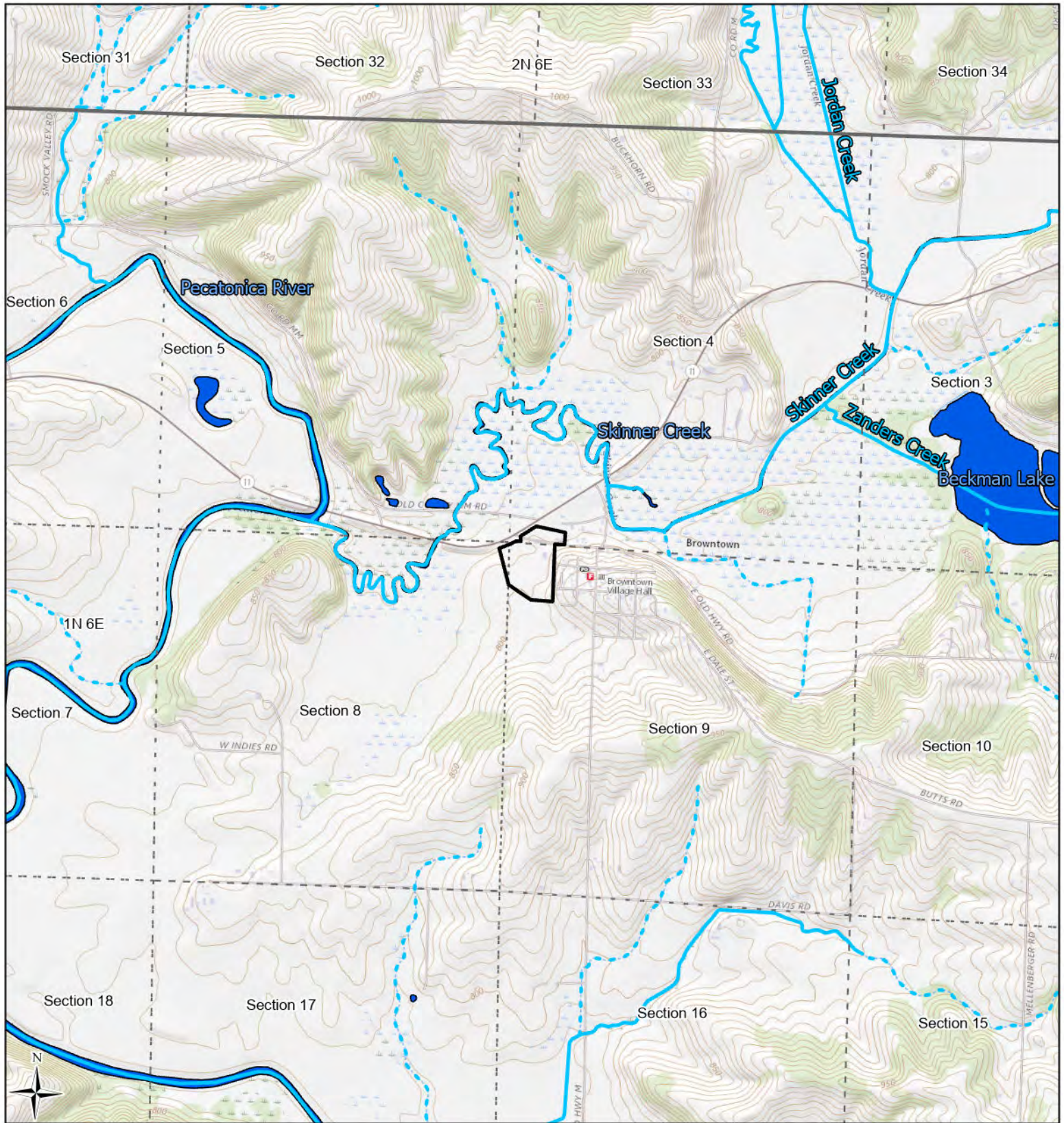








**Heartland**  
 ECOLOGICAL GROUP INC

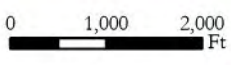
**Figure 1. Project Location**  
 Browntown Site  
 Project #20241224  
 T1N, R6E, S4/8/9  
 T Cadiz and V Browntown,  
 Green Co

OpenStreetMap  
 ESRI LRR: MW

Figure Created: 3/26/2024



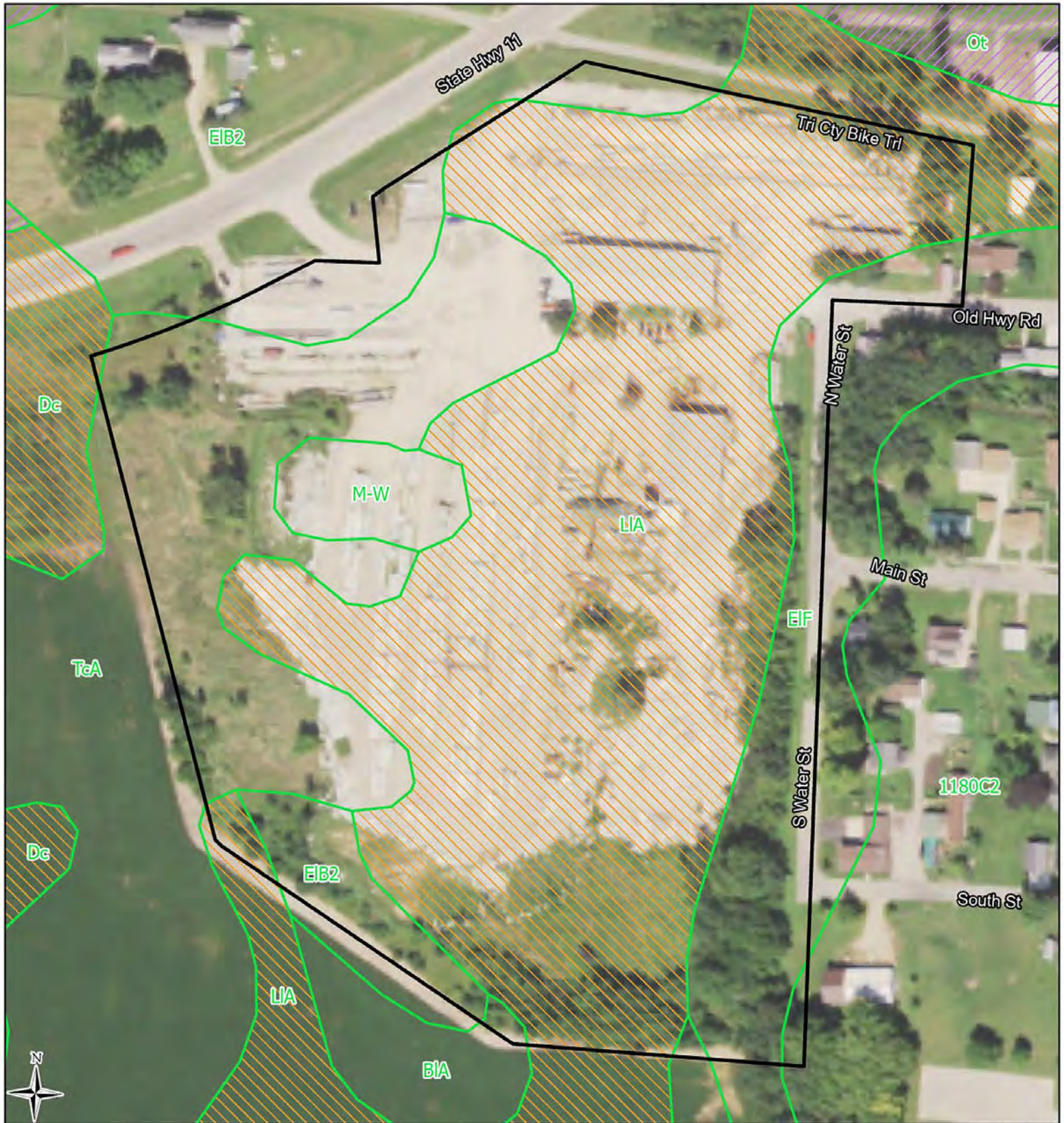
-  Study Area (17.00 ac)
-  Township
-  Section
-  Perennial Streams
-  Intermittent Streams
-  Waterbodies



**Heartland**  
ECOLOGICAL GROUP INC

Figure 2. USGS  
Topography  
Browntown Site  
Project #20241224  
T1N, R6E, S4/8/9  
T Cadiz and V Browntown,  
Green Co

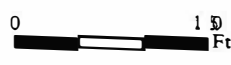
USGSTopo  
USGS, WDNR  
LRR: MW  
Figure Created: 3/26/2024



Study Area (17.00 ac)

### NRCS Soil Survey Data

- Hydric (100%)
- Predominantly Hydric (85-99%)
- Partially Hydric (16-84%)
- Predominantly Non-Hydric (1-15%)
- Non-Hydric (0%)

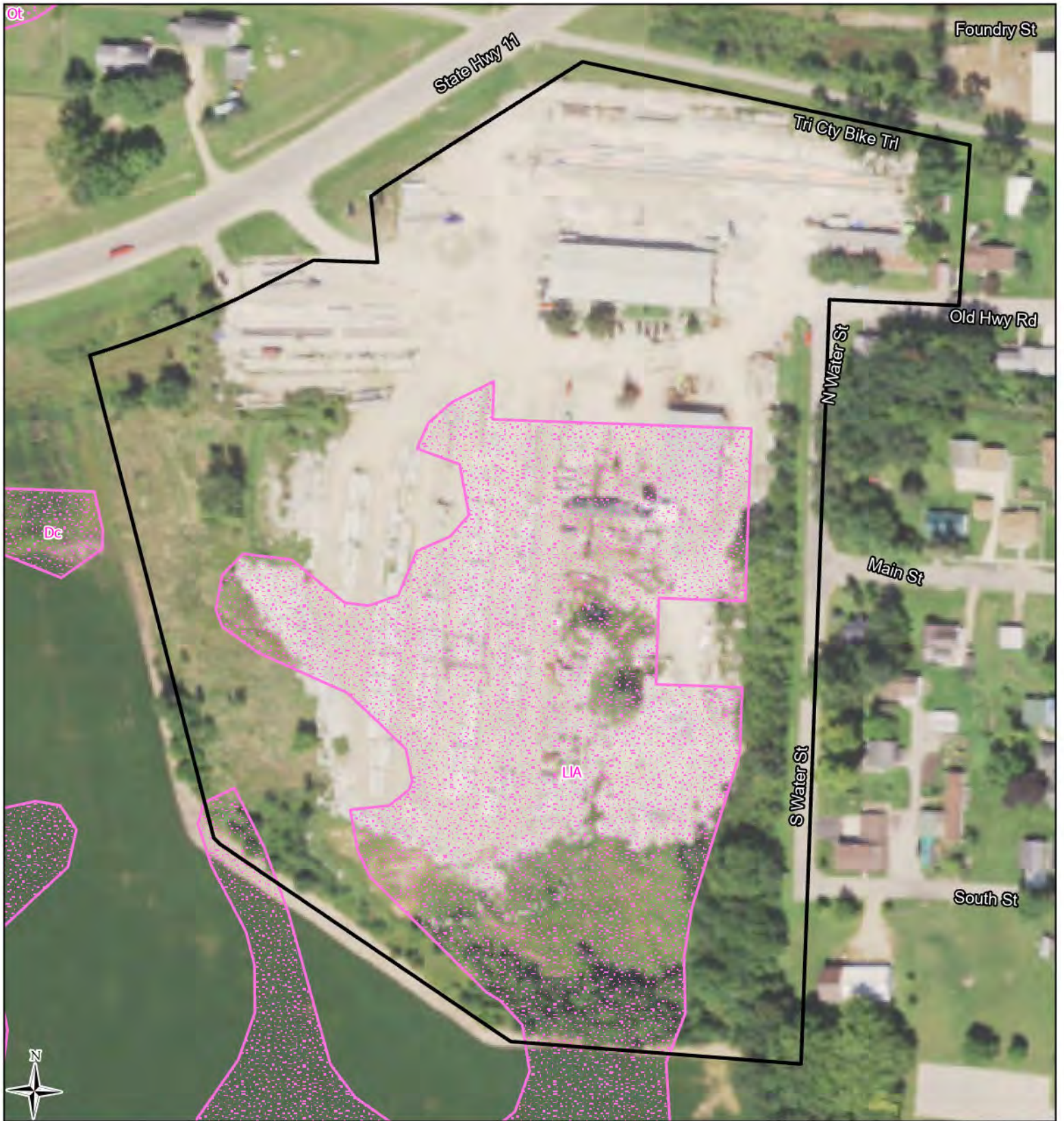


**Heartland**  
ECOLOGICAL GROUP INC

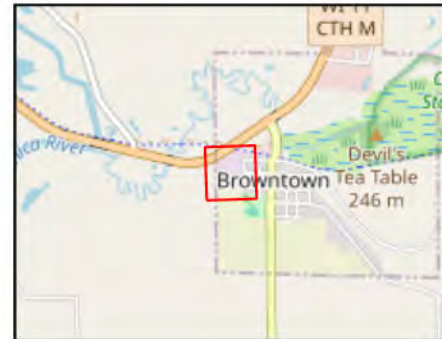
Figure 3. NRCS Hydric Soils  
Browntown Site  
Project #20241224  
T1N, R6E, S4/8/9  
T Cadiz and V Browntown,  
Green Co

2022 NAIP  
NRCS  
LRR: MW

Figure Created: 3/26/2024



- Study Area (17.00 ac)
- SWDV Wetland Indicators









**Heartland**  
 ECOLOGICAL GROUP INC

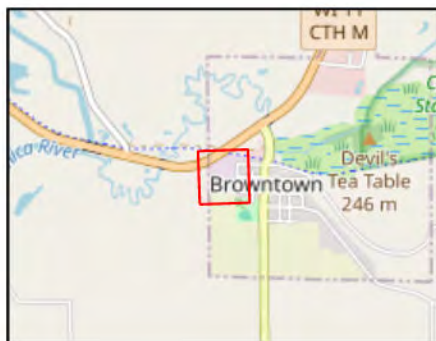
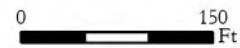
Figure 4. SWDV  
 Wetland Indicators  
 Browntown Site  
 Project #20241224  
 T1N, R6E, S4/8/9  
 T Cadiz and V Browntown,  
 Green Co

2022 NAIP  
 WDNR LRR: MW

Figure Created: 3/26/2024



-  Study Area (17.00 ac)
-  WWI Polygons (None in Map Extent)
-  WWI Points
-  Perennial Streams (None in Map Extent)
-  Intermittent Streams (None in Map Extent)
-  Waterbodies (None in Map Extent)



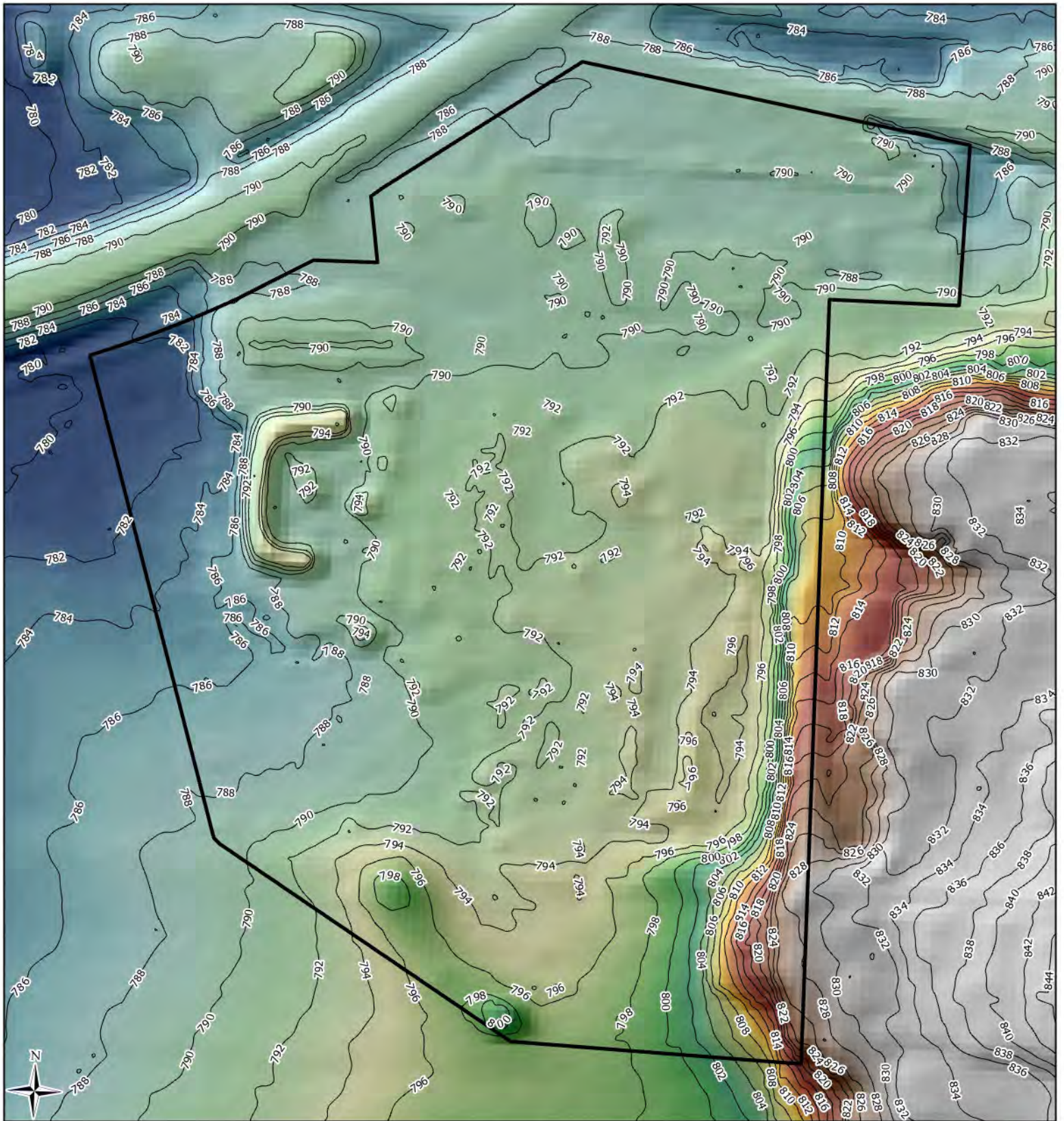
**Heartland**  
 ECOLOGICAL GROUP INC

**Figure 5. Wisconsin Wetland Inventory**  
 Browntown Site  
 Project # 20241224  
 T1N, R6E, S4/8/9  
 T Cadiz and V Browntown,  
 Green Co

2022 NAIP  
 WDNR, USGS

LRR: MW

Figure Created: 3/26/2024



Study Area (17.00 ac)  
~ Green Co 2' Contours

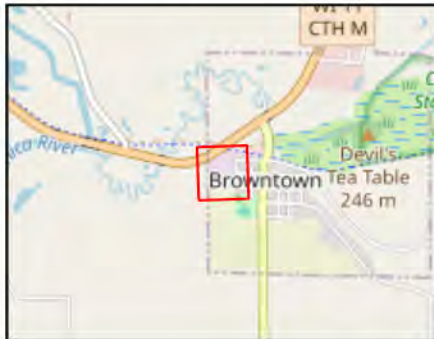


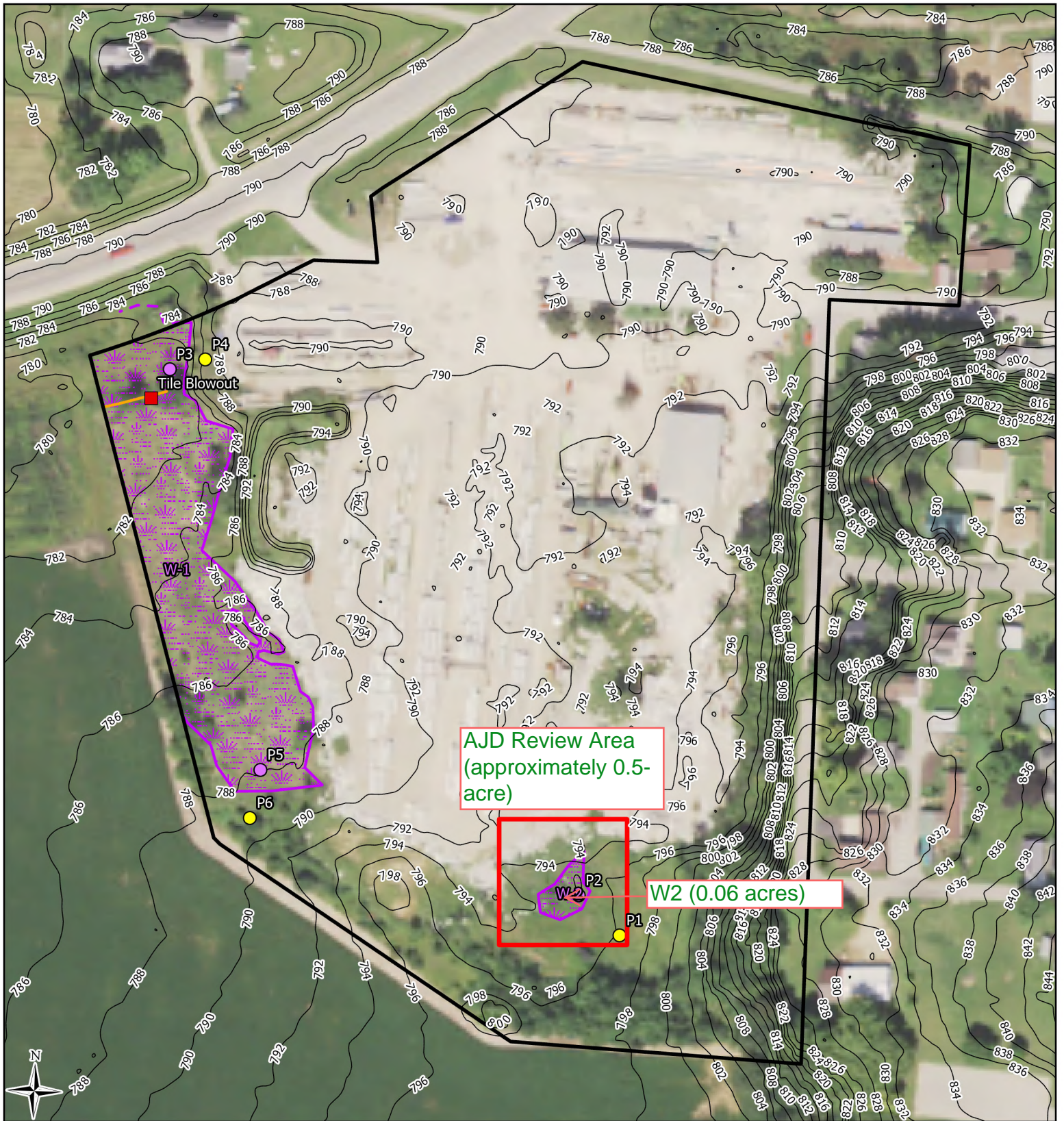
**Heartland**  
ECOLOGICAL GROUP INC

Figure 6. Color-Stretch  
 Digital Elevation Model  
 Browntown Site  
 Project #20241224  
 T1N, R6E, S4/8/9  
 T Cadiz and V Browntown,  
 Green Co

DNR Lidar Service  
 Green Co Contours, WDNR LRR: MW

Figure Created: 4/1/2024





AJD Review Area  
(approximately 0.5-  
acre)

W2 (0.06 acres)

- AJD Review Area (0.48 ac)
- Study Area (17.00 ac)
- Wetlands (1.39 ac)
- Tile Blowout
- Old 8" Clay Tile (Approximate Alignment)
- Offsite Wetland Boundaries
- Green Co 2' Contours

- Sample Points**
- Upland
  - Wetland



**Heartland**  
ECOLOGICAL GROUP INC

**Figure 7. Field Delineated Wetlands**  
Browntown Site  
Project #20241224  
T1N, R6E, S4/8/9  
T Cadiz and V Browntown,  
Green Co

2022 NAIP  
Green Co, HEG LRR: MW  
Figure Created: 4/21/2026