



DEPARTMENT OF THE ARMY
U.S. ARMY CORPS OF ENGINEERS, ST PAUL DISTRICT
ST PAUL DISTRICT OFFICE
332 MINNESOTA STREET SUITE E1500
ST PAUL MINNESOTA 55101-1323

CEMVP-RD

August 8, 2025

MEMORANDUM FOR RECORD

SUBJECT: US Army Corps of Engineers (Corps) Approved Jurisdictional Determination in accordance with the "Revised Definition of 'Waters of the United States'"; (88 FR 3004 (January 18, 2023) as amended by the "Revised Definition of 'Waters of the United States'; Conforming" (8 September 2023) ,¹ MVP-2025-00799-JST MFR 1 of 1

BACKGROUND. An Approved Jurisdictional Determination (AJD) is a Corps document stating the presence or absence of waters of the United States on a parcel or a written statement and map identifying the limits of waters of the United States on a parcel. AJDs are clearly designated appealable actions and will include a basis of JD with the document.² AJDs are case-specific and are typically made in response to a request. AJDs are valid for a period of five years unless new information warrants revision of the determination before the expiration date or a District Engineer has identified, after public notice and comment, that specific geographic areas with rapidly changing environmental conditions merit re-verification on a more frequent basis.³

On January 18, 2023, the Environmental Protection Agency (EPA) and the Department of the Army ("the agencies") published the "Revised Definition of 'Waters of the United States,'" 88 FR 3004 (January 18, 2023) ("2023 Rule"). On September 8, 2023, the agencies published the "Revised Definition of 'Waters of the United States'; Conforming", which amended the 2023 Rule to conform to the 2023 Supreme Court decision in *Sackett v. EPA*, 598 U.S., 143 S. Ct. 1322 (2023) ("*Sackett*").

This Memorandum for Record (MFR) constitutes the basis of jurisdiction for a Corps AJD as defined in 33 CFR §331.2. For the purposes of this AJD, we have relied on Section 10 of the Rivers and Harbors Act of 1899 (RHA),⁴ the 2023 Rule as amended, as well as other applicable guidance, relevant case law, and longstanding practice in evaluating jurisdiction.

1. SUMMARY OF CONCLUSIONS.

¹ While the Revised Definition of "Waters of the United States"; Conforming had no effect on some categories of waters covered under the CWA, and no effect on any waters covered under RHA, all categories are included in this Memorandum for Record for efficiency.

² 33 CFR 331.2.

³ Regulatory Guidance Letter 05-02.

⁴ USACE has authority under both Section 9 and Section 10 of the Rivers and Harbors Act of 1899 but for convenience, in this MFR, jurisdiction under RHA will be referred to as Section 10.

- a. Provide a list of each individual feature within the review area and the jurisdictional status of each one (i.e., identify whether each feature is/is not a water of the United States and/or a navigable water of the United States).

Name of Aquatic Resource	JD or Non-JD
Wetland 1 (5.24 acre)	Non-Jurisdictional
Wetland 3 (0.39 acre)	Non-Jurisdictional
Wetland 4 (0.14 acre)	Non-Jurisdictional
Wet Ditch 1 (0.40 acre)	Non-Jurisdictional, excluded feature
Wet Ditch 2 (0.25 acre)	Non-Jurisdictional, excluded feature
Wet Ditch 3 (0.42 acre)	Non-Jurisdictional, excluded feature
Wet Ditch 4 (0.05 acre)	Non-Jurisdictional, excluded feature
Wet Ditch 6 (0.12 acre)	Non-Jurisdictional, excluded feature
Wet Ditch A (0.15 acre)	Non-Jurisdictional, excluded feature
Wet Ditch B (0.31 acre)	Non-Jurisdictional,

CEMVP-RD

SUBJECT: 2023 Rule, as amended, Approved Jurisdictional Determination in Light of *Sackett v. EPA*, 143 S. Ct. 1322 (2023), MVP-2025-00799-JST

	excluded feature
--	-----------------------------

2. REFERENCES.

- a. "Revised Definition of 'Waters of the United States,'" 88 FR 3004 (January 18, 2023) ("2023 Rule")
- b. "Revised Definition of 'Waters of the United States'; Conforming" 88 FR 61964 (September 8, 2023))
- c. *Sackett v. EPA*, 598 U.S. 651, 143 S. Ct. 1322 (2023)
- d. "Memorandum To The Field Between The U.S. Department Of The Army, U.S. Army Corps Of Engineers And The U.S. Environmental Protection Agency Concerning The Proper Implementation Of 'Continuous Surface Connection' Under The Definition Of "Waters Of The United States" Under The Clean Water Act" (March 12, 2025)

3. REVIEW AREA. The review area for this determination includes seven excluded ditches and three non-adjacent wetlands, as identified in Section 1 (a) of this MFR and shown on the attached figures labeled MVP-2025-00799-JST AJD Figures – Pages 1-9 of 9.

- a. Project Area Size (in feet): 2,946 ft along Trunk Highway 212 (TH 212) & 1,637 ft along Trunk Highway 15 (TH 15)
- b. Location Description: The project/review area is located in Section 31, Township 115N, Range 29W, McLeod County, Minnesota.
- c. Center Coordinates of the Project Site (in decimal degrees)
Latitude: 44.724750 Longitude: -94.369690
- d. Nearest City or Town: Brownnton
- e. County: McLeod
- f. State: Minnesota
- g. Other associated Jurisdictional Determinations (including outcomes):
There are no other Jurisdictional Determinations associated with this project area.

CEMVP-RD

SUBJECT: 2023 Rule, as amended, Approved Jurisdictional Determination in Light of *Sackett v. EPA*, 143 S. Ct. 1322 (2023), MVP-2025-00799-JST

4. NEAREST TRADITIONAL NAVIGABLE WATER (TNW), THE TERRITORIAL SEAS, OR INTERSTATE WATER TO WHICH THE AQUATIC RESOURCE IS CONNECTED. N/A⁵
5. FLOWPATH FROM THE SUBJECT AQUATIC RESOURCES TO A TNW, THE TERRITORIAL SEAS, OR INTERSTATE WATER. N/A
6. SECTION 10 JURISDICTIONAL WATERS⁶: Describe aquatic resources or other features within the review area determined to be jurisdictional in accordance with Section 10 of the Rivers and Harbors Act of 1899. Include the size of each aquatic resource or other feature within the review area and how it was determined to be jurisdictional in accordance with Section 10.⁷
N/A
7. SECTION 404 JURISDICTIONAL WATERS: Describe the aquatic resources within the review area that were found to meet the definition of waters of the United States in accordance with the 2023 Rule as amended, consistent with the Supreme Court's decision in *Sackett*. List each aquatic resource separately, by name, consistent with the naming convention used in section 1, above. Include a rationale for each aquatic resource, supporting that the aquatic resource meets the relevant category of "waters of the United States" in the 2023 Rule as amended. The rationale should also include a written description of, or reference to a map in the administrative record that shows, the lateral limits of jurisdiction for each aquatic resource, including how that limit was determined, and incorporate relevant references used. Include the size of each aquatic resource in acres or linear feet and attach and reference related figures as needed. N/A
 - a. Traditional Navigable Waters (TNWs) (a)(1)(i): N/A
 - b. The Territorial Seas (a)(1)(ii): N/A

⁵ This MFR should not be used to complete a new stand-alone TNW determination. A stand-alone TNW determination for a water that is not subject to Section 9 or 10 of the Rivers and Harbors Act of 1899 (RHA) is completed independently of a request for an AJD. A stand-alone TNW determination is conducted for a specific segment of river or stream or other type of waterbody, such as a lake, where upstream or downstream limits or lake borders are established.

⁶ 33 CFR 329.9(a) A waterbody which was navigable in its natural or improved state, or which was susceptible of reasonable improvement (as discussed in § 329.8(b) of this part) retains its character as "navigable in law" even though it is not presently used for commerce, or is presently incapable of such use because of changed conditions or the presence of obstructions.

⁷ This MFR is not to be used to make a report of findings to support a determination that the water is a navigable water of the United States. The district must follow the procedures outlined in 33 CFR part 329.14 to make a determination that water is a navigable water of the United States subject to Section 10 of the RHA.

- c. Interstate Waters (a)(1)(iii): N/A
- d. Impoundments (a)(2): N/A
- e. Tributaries (a)(3): N/A
- f. Adjacent Wetlands (a)(4): N/A
- g. Additional Waters (a)(5): N/A

8. NON-JURISDICTIONAL AQUATIC RESOURCES AND FEATURES

- a. Describe aquatic resources and other features within the review area identified in the 2023 Rule as amended as not “waters of the United States” even where they otherwise meet the terms of paragraphs (a)(2) through (5). Include the type of excluded aquatic resource or feature, the size of the aquatic resource or feature within the review area and describe how it was determined to meet one of the exclusions listed in 33 CFR 328.3(b).⁸

The aquatic resources identified as Wet Ditch 1 (0.40 acre), Wet Ditch 2 (0.25 acre), Wet Ditch 3 (0.42 acre), Wet Ditch 4 (0.05 acre), Wet Ditch 6 (0.12 acre), Wet Ditch A (0.15 acre), and Wet Ditch B (0.31 acre) are linear roadside drainage ditches constructed in upland and draining only upland. This determination is supported by the NRCS Web Soil Survey which indicates that these areas are mapped in predominantly non-hydric soils. The National Hydrography Dataset (NHD) and National Wetlands Inventory (NWI) also do not show any features overlapping with these features. Historic aerial imagery collected from the Minnesota Historical Aerial Photographs Online (MNHAPO) database indicate that these features were constructed in association with the road development to convey stormwater runoff. A review of the US Geological Service 3DEP Hillshade, DEM, and 2-foot contour maps shows that these features are located within depressional areas in higher elevations, indicating these features were constructed in uplands. These features were constructed as stormwater drainage features to convey runoff from the roadway. Based on a review of desktop resources, Wet Ditch 1, 2, 3, 4, 6, A, and B are linear roadside drainage ditches constructed in upland, draining only upland, and do not carry a relatively permanent flow of water. Therefore, these aquatic resources have been determined to be Paragraph (b)(3) excluded ditches and are not subject to regulation under Section 404 of the Clean Water Act (CWA).

⁸ 88 FR 3004 (January 18, 2023)

- b. Describe aquatic resources and features within the review area that were determined to be non-jurisdictional because they do not meet one or more categories of waters of the United States under the 2023 Rule as amended (e.g., tributaries that are non-relatively permanent waters; non-tidal wetlands that do not have a continuous surface connection to a jurisdictional water).

The aquatic resources within the review area identified as Wetland 1 (5.24 acre), Wetland 3 (0.39 acre), and Wetland 4 (0.14 acre) are not TNWs, territorial seas, or interstate waters and are therefore not (a)(1) waters. This determination is supported by the national wetland inventory and hydrography datasets, which does not identify any aquatic resources or other potential connections between these wetlands and any other requisite covered waters.

Wetland 1 is a large wetland complex in the northeast corner of the project area and is located within an agricultural field. Wetland 1 is bordered by TH 212 to the south and TH 15 to the west. This wetland is surrounded wholly by uplands within agricultural fields and non-jurisdictional roadside ditches. Based on evaluation of these roadside ditches above in Section 8 (a) of this MFR, these ditches cannot provide a continuous surface connection for Wetland 1.

Wetland 3 is part of a larger wetland complex that extends offsite to the northwest and is a shallow marsh wetland. Wetland 3 is bordered by TH 212 to the south and TH 15 to the east. The wetland was assessed in its entirety and is surrounded by uplands within agricultural fields. Based on evaluation of these roadside ditches above in Section 8 (a) of this MFR, these ditches cannot provide a continuous surface connection for Wetland 3.

Wetland 4 is a fresh wet meadow wetland located within a depression in the northwest corner of the project area and is bordered by TH 15 to the east. This feature is surrounded by uplands within agricultural fields. Based on evaluation of these roadside ditches above in Section 8 (a) of this MFR, these ditches cannot provide a continuous surface connection for Wetland 4.

The surrounding area land use consists of commercial developments, agricultural fields, and roadways. These wetlands do not physically abut any (a)(1) waters, (a)(2) impoundments, or (a)(3) tributaries. The subject aquatic resources do not have a continuous surface connection to any relatively permanent water and as such do not meet the definition of adjacent and cannot be evaluated as (a)(4) wetlands; therefore, these aquatic resources are not jurisdictional under the 2023 Revised definition of 'Waters of the United States'; Conforming" 88 FR 61964 Rule.

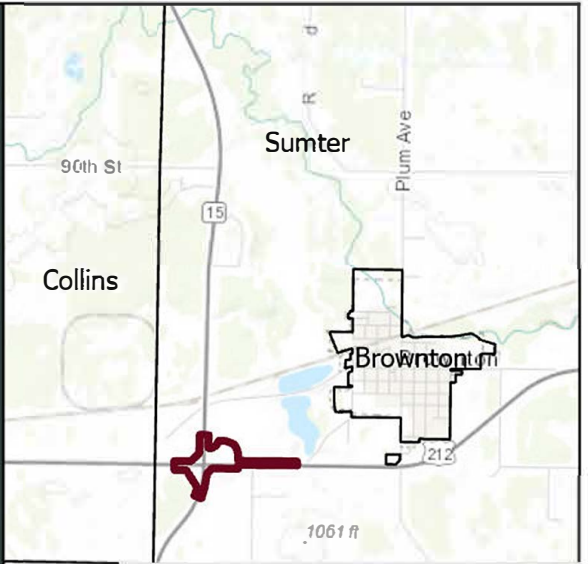
CEMVP-RD

SUBJECT: 2023 Rule, as amended, Approved Jurisdictional Determination in Light of *Sackett v. EPA*, 143 S. Ct. 1322 (2023), MVP-2025-00799-JST

9. DATA SOURCES. List sources of data/information used in making determination. Include titles and dates of sources used and ensure that information referenced is available in the administrative record.
 - a. Minnesota Regulatory Viewer: 3DEP Hillshade Layer, 3DEP 2-foot contour layer, US Geological Service 3DEP Digital Elevation Model (DEM) and NHD layers, and USFWS NWI layer.
 - b. MNHAPO historic aerial imagery dated 1940 and 1955.
 - c. Level 2 Wetland Delineation of Trunk Highway 212 State Project 4309-35 prepared by Sambatek dated August 22, 2022.
 - d. Addendum to TH 212 Wetland Delineation – SP 4309-35 (TH 212) prepared by Alliant Engineering dated May 28, 2025.

10. OTHER SUPPORTING INFORMATION. N/A

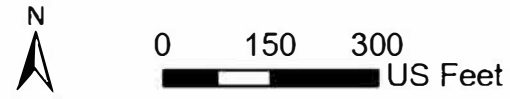
11. NOTE: The structure and format of this MFR were developed in coordination with the EPA and Department of the Army. The MFR's structure and format may be subject to future modification or may be rescinded as needed to implement additional guidance from the agencies; however, the approved jurisdictional determination described herein is a final agency action.



Legend

 Project Area

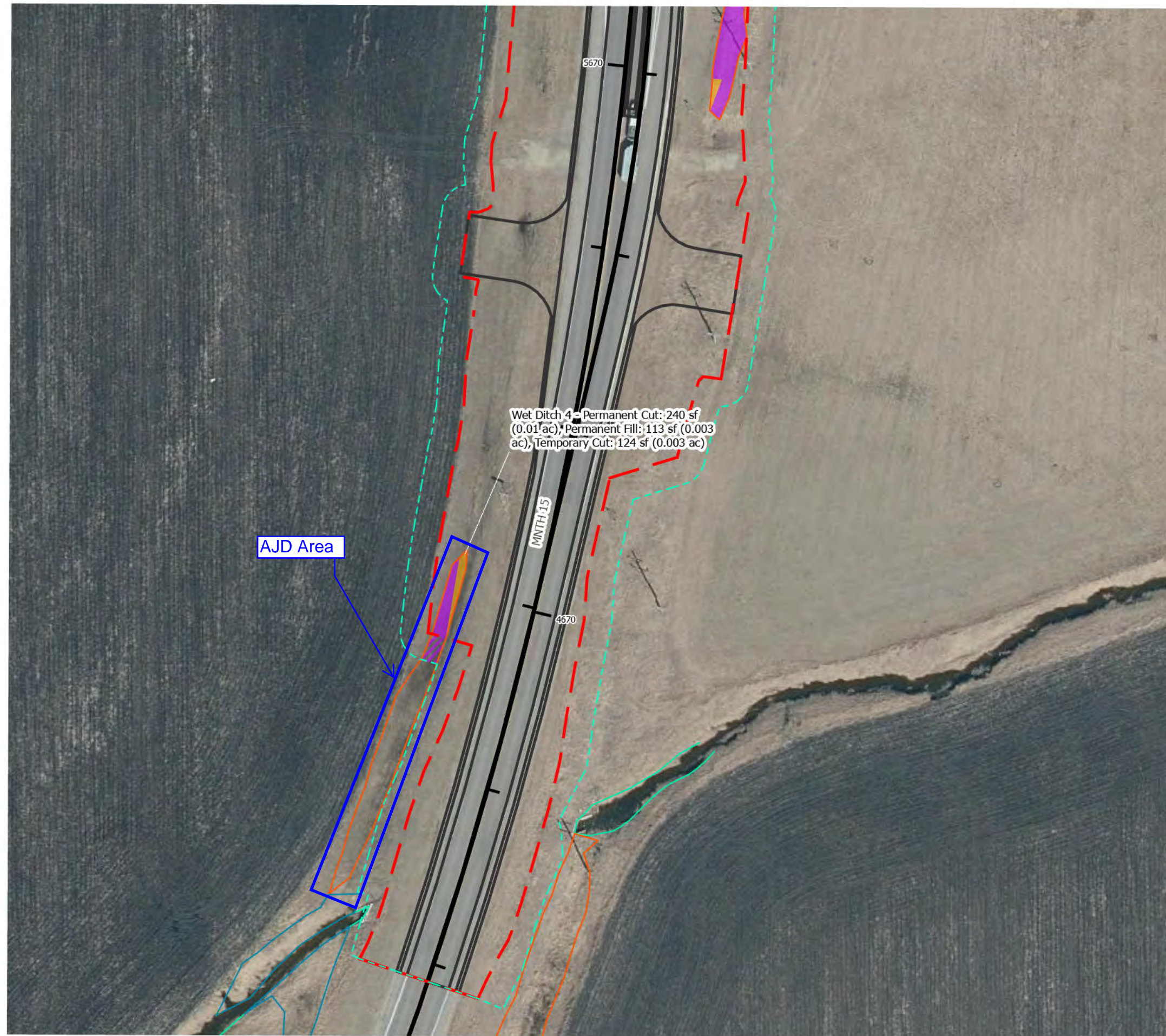
SP 4309-35
T.H. 212 Brownton Roundabout
Figure 1
Project Location



Source: McLeod County 2022 Aerial



Date Exported: 1/31/2025



Legend

- Engineered Limit
- Construction Limit
- Proposed Geometry
- Alignment

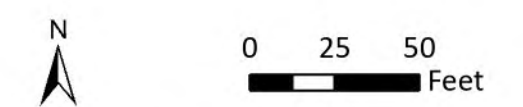
Wetland Impacts

- Permanent Cut
- Permanent Fill
- Temporary Cut

Wetland Delineation

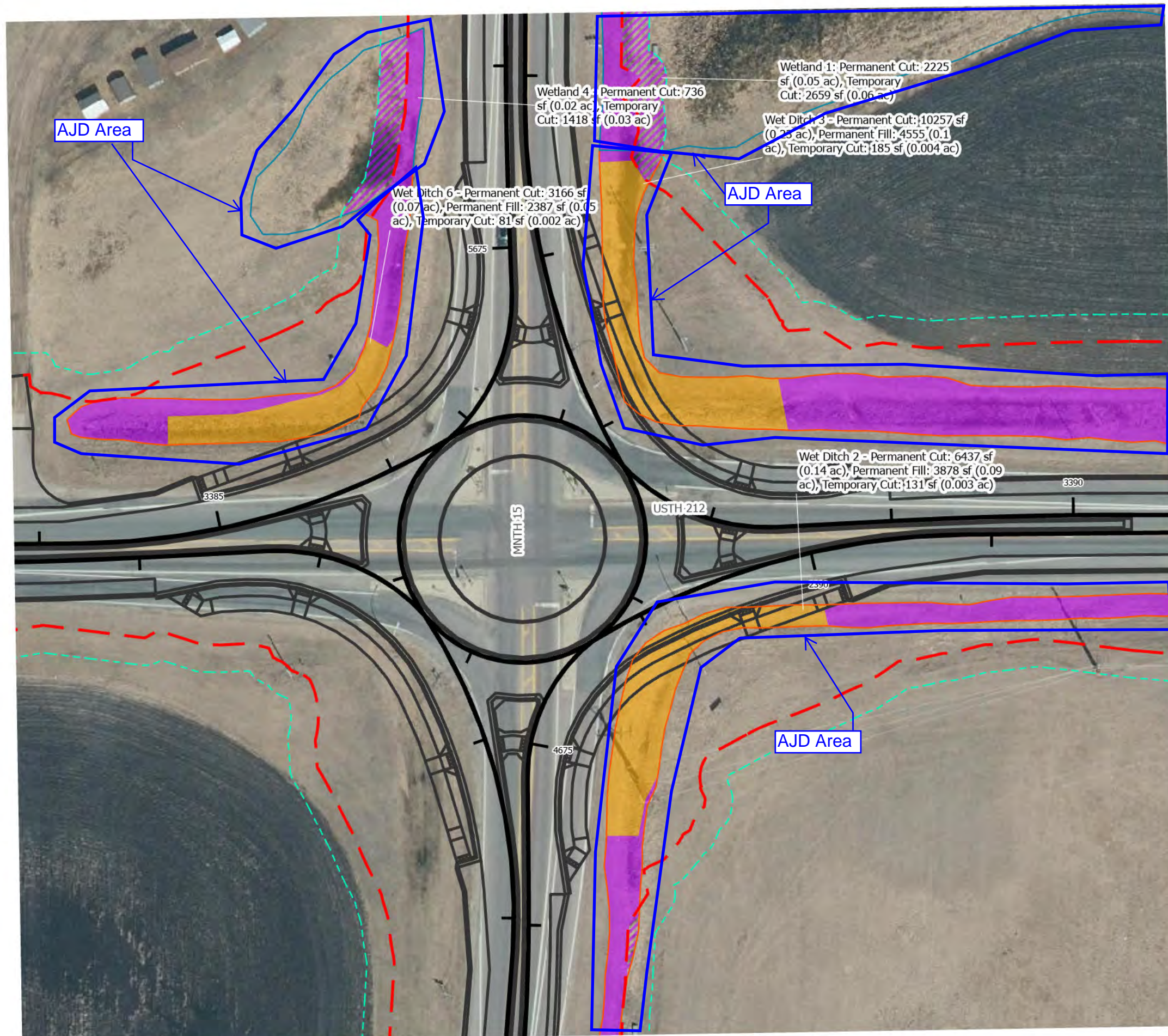
- Wetlands
- Wet Ditches
- OAR

Wetland Impacts - Plan View
S.P. 4309-35 (TH 212)
McLeod County, Minnesota



Source: McLeod County 2022 Aerial





Legend

- Engineered Limit
- Construction Limit
- Proposed Geometry
- Alignment

Wetland Impacts

- Permanent Cut
- Permanent Fill
- Temporary Cut

Wetland Delineation

- Wetlands
- Wet Ditches
- OAR

Wetland Impacts - Plan View
S.P. 4309-35 (TH 212)
McLeod County, Minnesota

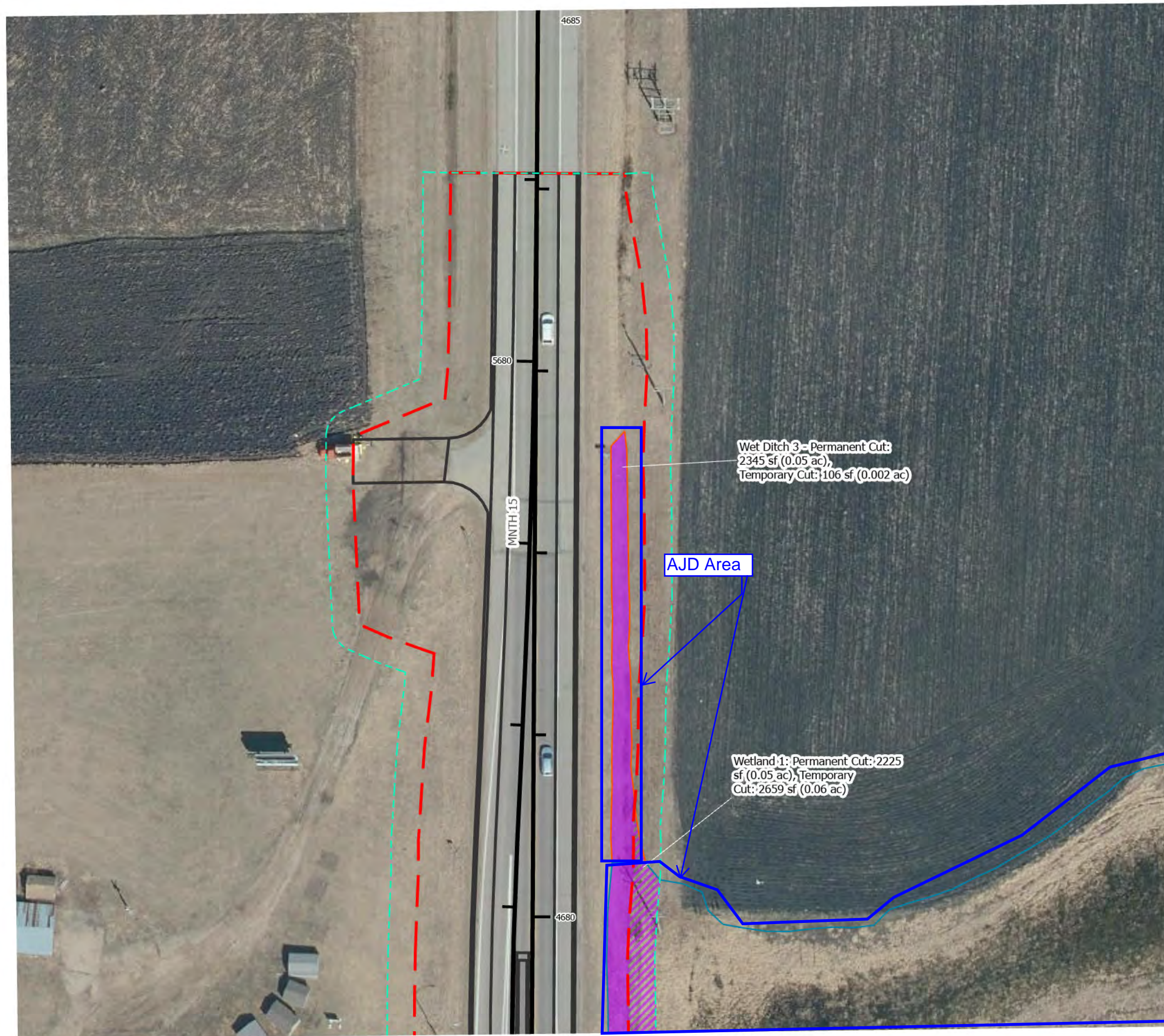
N

0 25 50 Feet

Source: McLeod County 2022 Aerial

ALLIANT

Date Exported: 7/9/2025



Legend

- Engineered Limit
- - - Construction Limit
- Proposed Geometry
- Alignment

Wetland Impacts

- Permanent Cut
- Permanent Fill
- Temporary Cut

Wetland Delineation

- Wetlands
- Wet Ditches
- OAR

Wetland Impacts - Plan View
S.P. 4309-35 (TH 212)
McLeod County, Minnesota

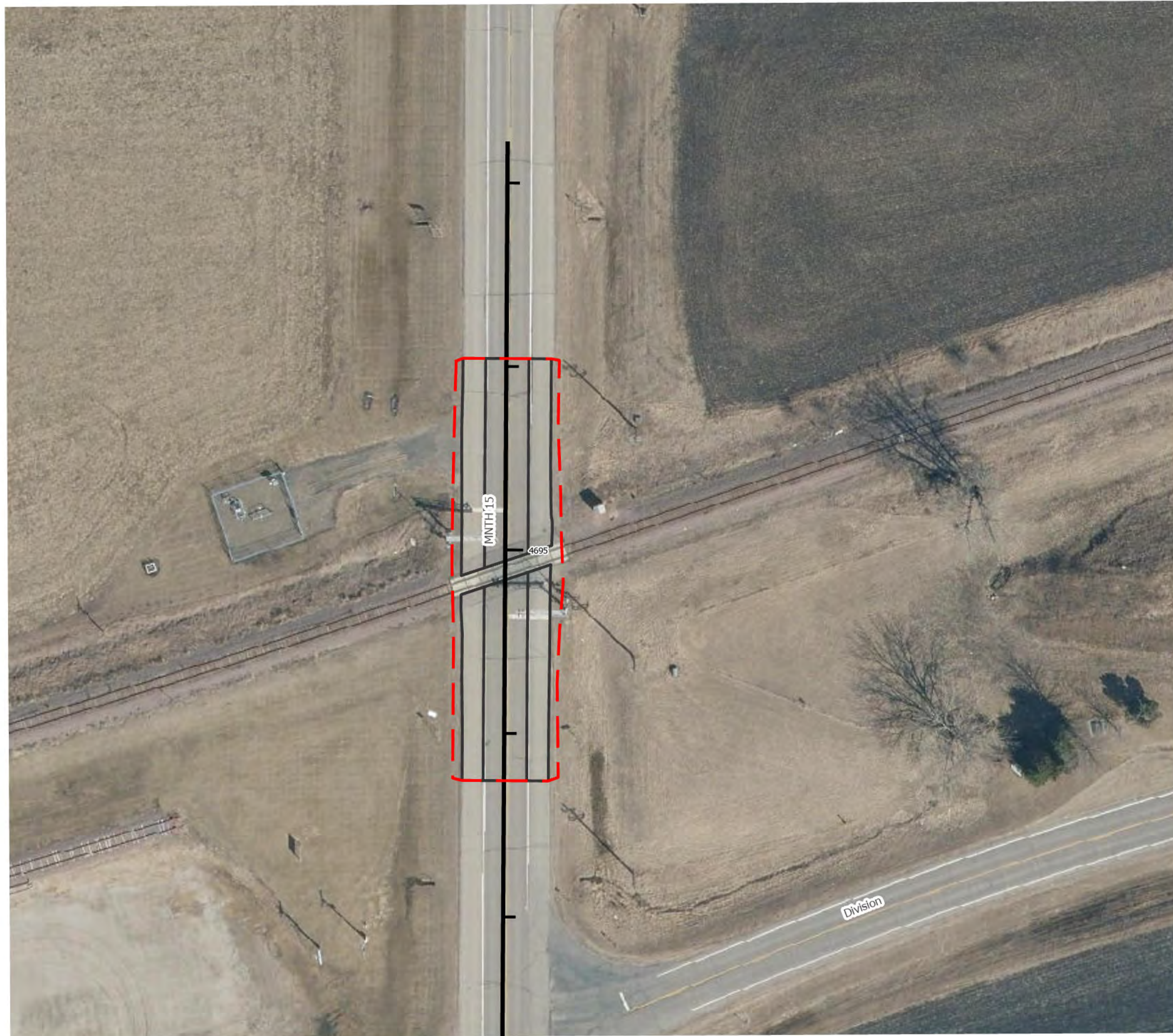
N

0 25 50 Feet

Source: McLeod County 2022 Aerial

ALLIANT

Date Exported: 7/9/2025



Legend

- Engineered Limit
- Construction Limit
- Proposed Geometry
- Alignment

Wetland Impacts

- Permanent Cut
- Permanent Fill
- Temporary Cut

Wetland Delineation

- Wetlands
- Wet Ditches
- OAR

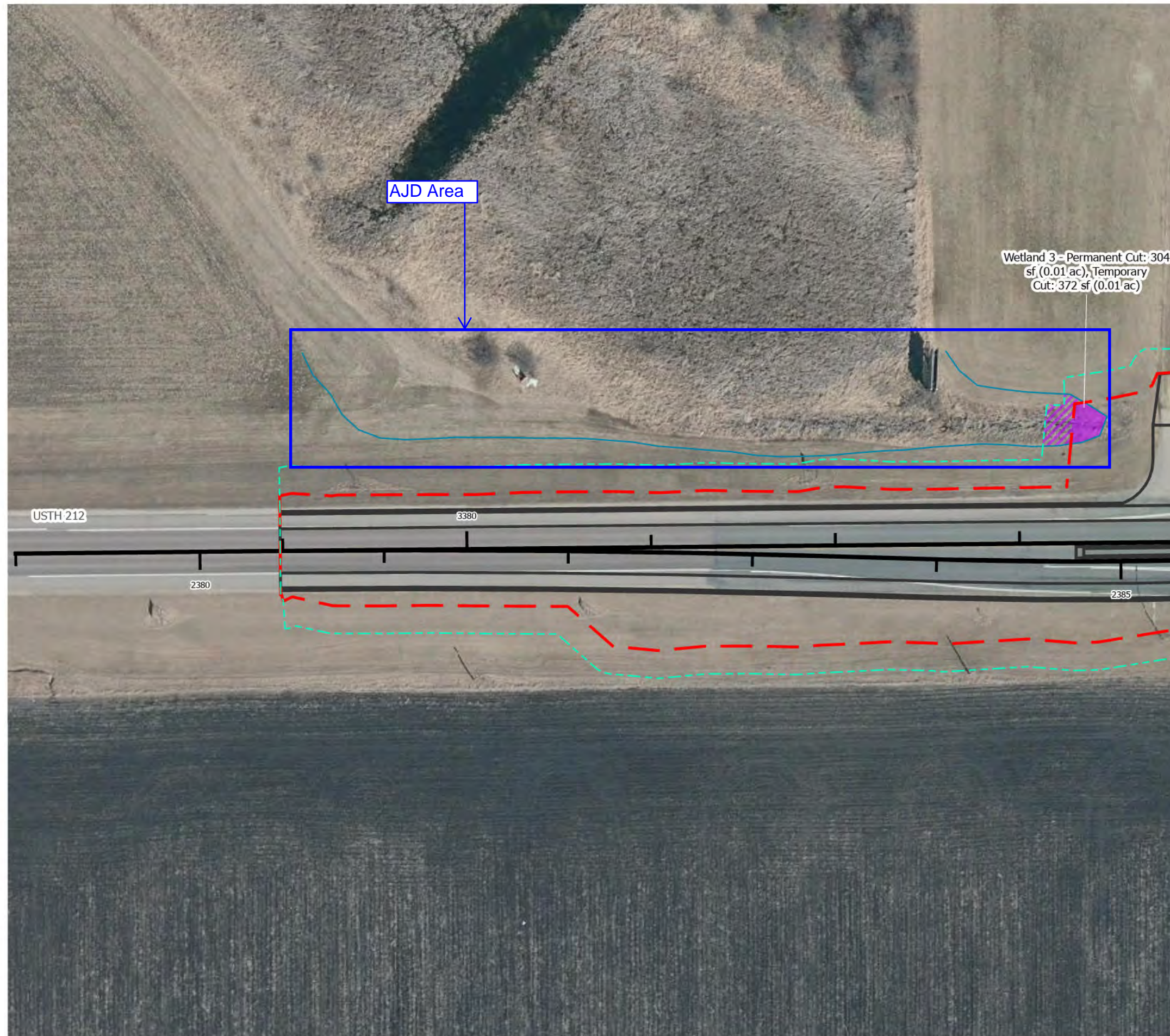
Wetland Impacts - Plan View
S.P. 4309-35 (TH 212)
McLeod County, Minnesota

N

0 25 50 Feet

Source: McLeod County 2022 Aerial





Page 5 of 8

Legend

- Engineered Limit
 - Construction Limit
 - Proposed Geometry
 - Alignment
- Wetland Impacts**
- Permanent Cut
 - Permanent Fill
 - Temporary Cut
- Wetland Delineation**
- Wetlands
 - Wet Ditches
 - OAR

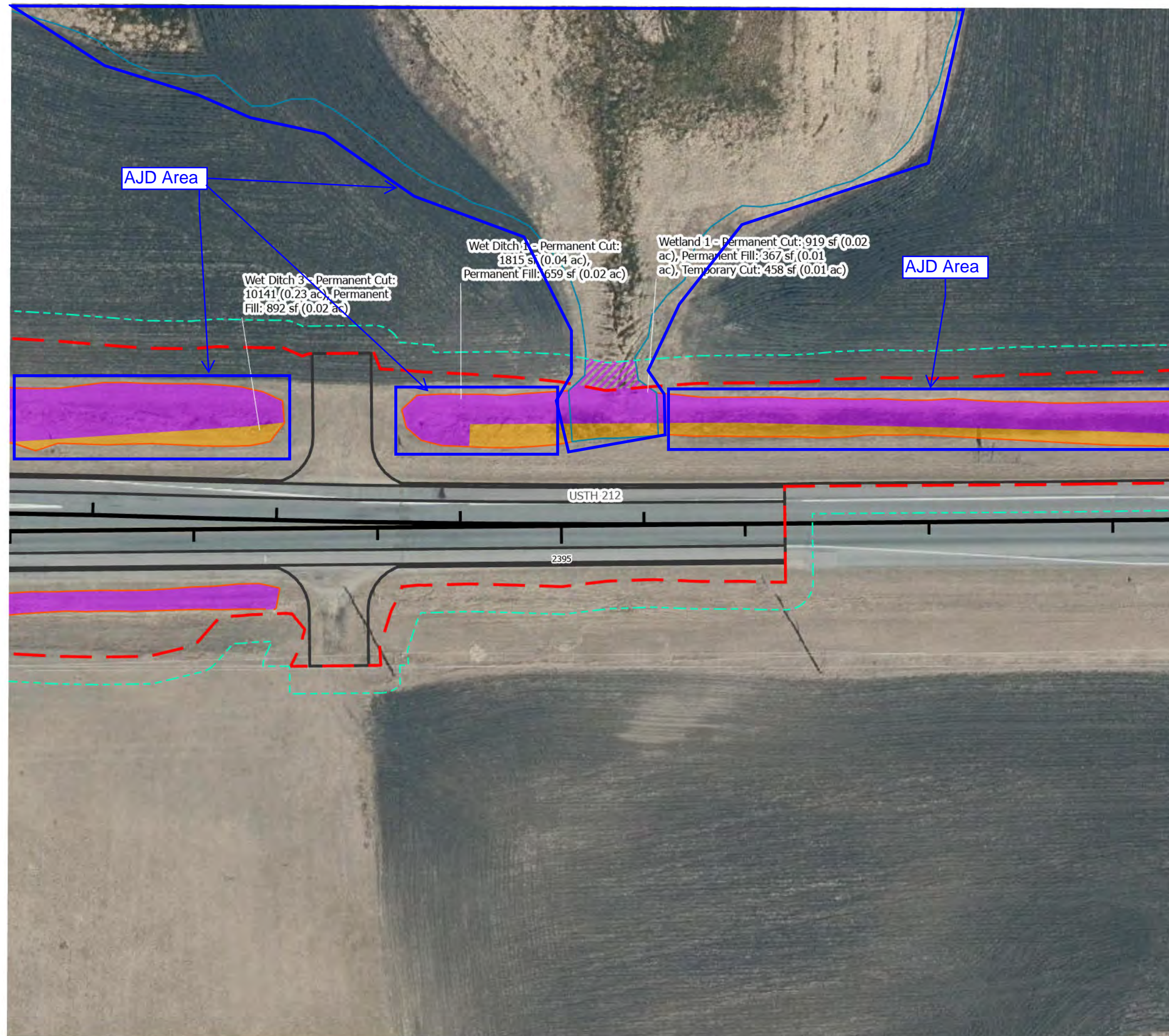
Wetland Impacts - Plan View
S.P. 4309-35 (TH 212)
McLeod County, Minnesota



Source: McLeod County 2022 Aerial



Date Exported: 7/9/2025



Legend

- Engineered Limit
- Construction Limit
- Proposed Geometry
- Alignment

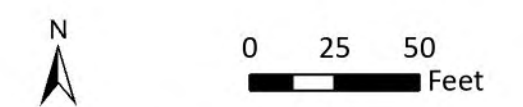
Wetland Impacts

- Permanent Cut
- Permanent Fill
- Temporary Cut

Wetland Delineation

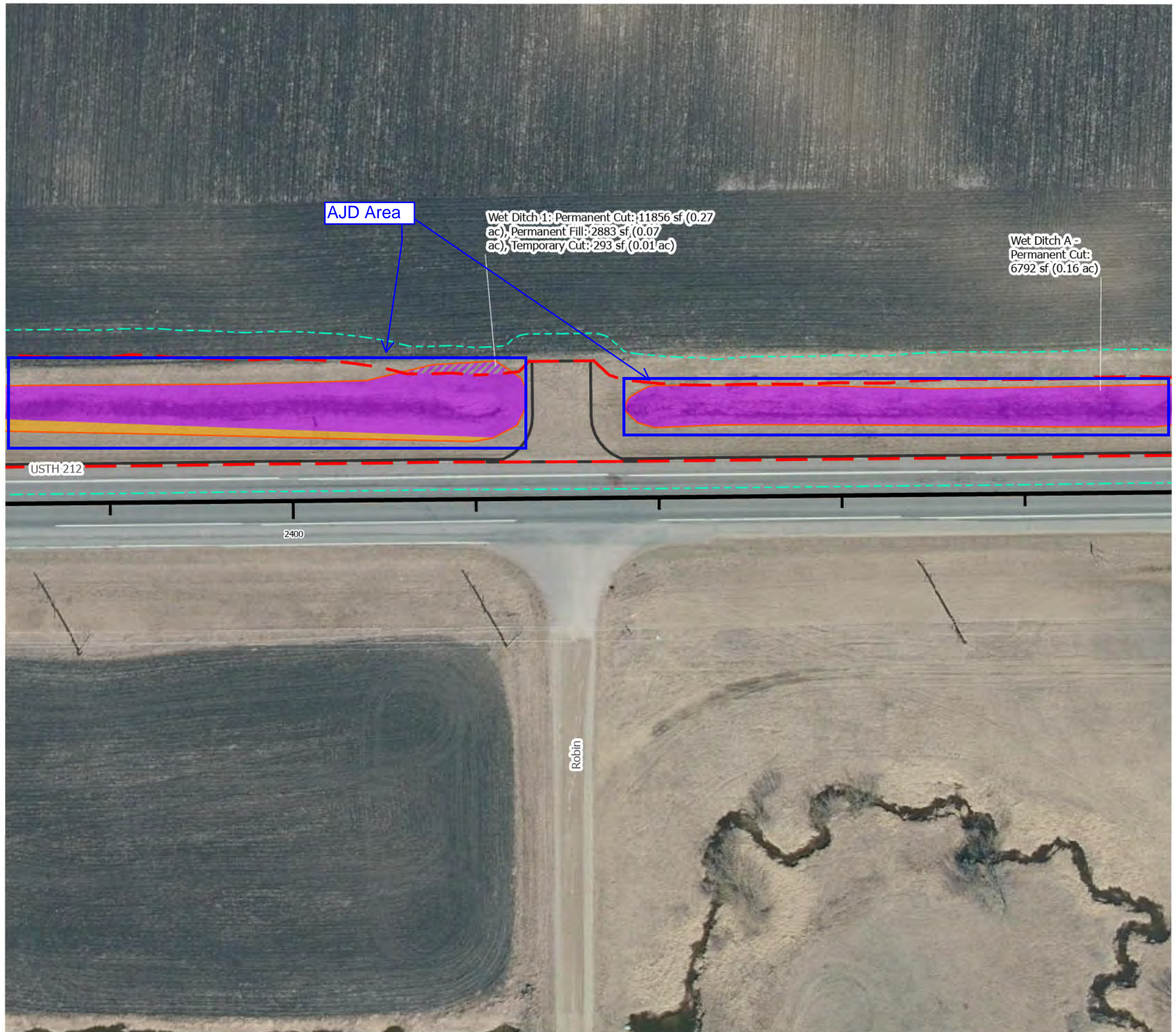
- Wetlands
- Wet Ditches
- OAR

Wetland Impacts - Plan View
S.P. 4309-35 (TH 212)
McLeod County, Minnesota



Source: McLeod County 2022 Aerial





- Legend**
- Engineered Limit
 - Construction Limit
 - Proposed Geometry
 - Alignment
- Wetland Impacts**
- Permanent Cut
 - Permanent Fill
 - Temporary Cut
- Wetland Delineation**
- Wetlands
 - Wet Ditches
 - OAR

Wetland Impacts - Plan View
S.P. 4309-35 (TH 212)
McLeod County, Minnesota



Source: McLeod County 2022 Aerial





Wet Ditch A -
Permanent Cut:
6792 sf (0.16 ac)

AJD Area

Wet Ditch B - Permanent Cut:
7467 sf (0.017 ac),
Temporary Cut: 202 sf (0.007 ac)

USTH 212

2405

2410

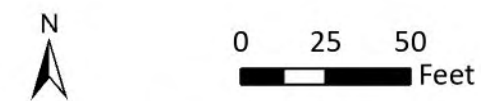


Page 8 of 8

Legend

- Engineered Limit
 - Construction Limit
 - Proposed Geometry
 - Alignment
- Wetland Impacts**
- Permanent Cut
 - Permanent Fill
 - Temporary Cut
- Wetland Delineation**
- Wetlands
 - Wet Ditches
 - OAR

Wetland Impacts - Plan View
S.P. 4309-35 (TH 212)
McLeod County, Minnesota



Source: McLeod County 2022 Aerial



Date Exported: 7/9/2025