



DEPARTMENT OF THE ARMY  
U.S. ARMY CORPS OF ENGINEERS, ST. PAUL DISTRICT  
332 MINNESOTA STREET, SUITE E1500  
ST. PAUL, MN 55101-1323

MVP-2025-01181-MMP (SP3701-90)

January 9, 2025

MEMORANDUM FOR RECORD

SUBJECT: US Army Corps of Engineers (Corps) Approved Jurisdictional Determination in accordance with the “Revised Definition of ‘Waters of the United States’”; (88 FR 3004 (January 18, 2023) as amended by the “Revised Definition of ‘Waters of the United States’; Conforming” (8 September 2023) ,<sup>1</sup> 2025-01181-MMP. MFR 1 of 1.

BACKGROUND. An Approved Jurisdictional Determination (AJD) is a Corps document stating the presence or absence of waters of the United States on a parcel or a written statement and map identifying the limits of waters of the United States on a parcel. AJDs are clearly designated appealable actions and will include a basis of JD with the document.<sup>2</sup> AJDs are case-specific and are typically made in response to a request. AJDs are valid for a period of five years unless new information warrants revision of the determination before the expiration date or a District Engineer has identified, after public notice and comment, that specific geographic areas with rapidly changing environmental conditions merit re-verification on a more frequent basis.<sup>3</sup>

On January 18, 2023, the Environmental Protection Agency (EPA) and the Department of the Army (“the agencies”) published the “Revised Definition of ‘Waters of the United States,’” 88 FR 3004 (January 18, 2023) (“2023 Rule”). On September 8, 2023, the agencies published the “Revised Definition of ‘Waters of the United States’; Conforming”, which amended the 2023 Rule to conform to the 2023 Supreme Court decision in *Sackett v. EPA*, 598 U.S., 143 S. Ct. 1322 (2023) (“*Sackett*”).

This Memorandum for Record (MFR) constitutes the basis of jurisdiction for a Corps AJD as defined in 33 CFR §331.2. For the purposes of this AJD, we have relied on Section 10 of the Rivers and Harbors Act of 1899 (RHA),<sup>4</sup> the 2023 Rule as amended, as well as other applicable guidance, relevant case law, and longstanding practice in evaluating jurisdiction.

1. SUMMARY OF CONCLUSIONS.

---

<sup>1</sup> While the Revised Definition of “Waters of the United States”; Conforming had no effect on some categories of waters covered under the CWA, and no effect on any waters covered under RHA, all categories are included in this Memorandum for Record for efficiency.

<sup>2</sup> 33 CFR 331.2.

<sup>3</sup> Regulatory Guidance Letter 05-02.

<sup>4</sup> USACE has authority under both Section 9 and Section 10 of the Rivers and Harbors Act of 1899 but for convenience, in this MFR, jurisdiction under RHA will be referred to as Section 10.

MVP

SUBJECT: 2023 Rule, as amended, Approved Jurisdictional Determination in Light of *Sackett v. EPA*, 143 S. Ct. 1322 (2023), 2025-01181-MMP

- a. Provide a list of each individual feature within the review area and the jurisdictional status of each one (i.e., identify whether each feature is/is not a water of the United States and/or a navigable water of the United States).
  - i. Wet Ditch 1, 0.04 acre.
  - ii. Wet Ditch 2, 0.05 acre.

2. REFERENCES.

- a. "Revised Definition of 'Waters of the United States,'" 88 FR 3004 (January 18, 2023) ("2023 Rule")
- b. "Revised Definition of 'Waters of the United States'; Conforming" 88 FR 61964 (September 8, 2023)
- c. *Sackett v. EPA*, 598 U.S. 651, 143 S. Ct. 1322 (2023)
- d. Memorandum To The Field Between The U.S. Department Of The Army, U.S. Army Corps Of Engineers And The U.S. Environmental Protection Agency Concerning The Proper Implementation Of 'Continuous Surface Connection' Under The Definition Of "Waters Of The United States" Under The Clean Water Act" (March 12, 2025)

3. REVIEW AREA. The review area for this determination includes 2 excluded features, as identified on the enclosed figures labeled MVP-2025-01181-MMP, Figures 1 of 6 through 6 of 6. The review area is located in Section 19, Township 119 North, Range 42 West at Latitude: 45.1061 and Longitude: -95.9665. The review area is located along Trunk Highway (TH) 40 in Chippewa County, Minnesota.

4. NEAREST TRADITIONAL NAVIGABLE WATER (TNW), THE TERRITORIAL SEAS, OR INTERSTATE WATER TO WHICH THE AQUATIC RESOURCE IS CONNECTED. N/A

5. FLOWPATH FROM THE SUBJECT AQUATIC RESOURCES TO A TNW, THE TERRITORIAL SEAS, OR INTERSTATE WATER. N/A

MVP

SUBJECT: 2023 Rule, as amended, Approved Jurisdictional Determination in Light of *Sackett v. EPA*, 143 S. Ct. 1322 (2023), 2025-01181-MMP

6. SECTION 10 JURISDICTIONAL WATERS<sup>5</sup>: Describe aquatic resources or other features within the review area determined to be jurisdictional in accordance with Section 10 of the Rivers and Harbors Act of 1899. Include the size of each aquatic resource or other feature within the review area and how it was determined to be jurisdictional in accordance with Section 10.<sup>6</sup> N/A
  
7. SECTION 404 JURISDICTIONAL WATERS: Describe the aquatic resources within the review area that were found to meet the definition of waters of the United States in accordance with the 2023 Rule as amended, consistent with the Supreme Court's decision in *Sackett*. List each aquatic resource separately, by name, consistent with the naming convention used in section 1, above. Include a rationale for each aquatic resource, supporting that the aquatic resource meets the relevant category of "waters of the United States" in the 2023 Rule as amended. The rationale should also include a written description of, or reference to a map in the administrative record that shows, the lateral limits of jurisdiction for each aquatic resource, including how that limit was determined, and incorporate relevant references used. Include the size of each aquatic resource in acres or linear feet and attach and reference related figures as needed.
  - a. Traditional Navigable Waters (TNWs) (a)(1)(i): N/A
  - b. The Territorial Seas (a)(1)(ii): N/A
  - c. Interstate Waters (a)(1)(iii): N/A
  - d. Impoundments (a)(2): N/A
  - e. Tributaries (a)(3): N/A
  - f. Adjacent Wetlands (a)(4): N/A
  - g. Additional Waters (a)(5): N/A

## 8. NON-JURISDICTIONAL AQUATIC RESOURCES AND FEATURES

---

<sup>5</sup> 33 CFR 329.9(a) A waterbody which was navigable in its natural or improved state, or which was susceptible of reasonable improvement (as discussed in § 329.8(b) of this part) retains its character as "navigable in law" even though it is not presently used for commerce, or is presently incapable of such use because of changed conditions or the presence of obstructions.

<sup>6</sup> This MFR is not to be used to make a report of findings to support a determination that the water is a navigable water of the United States. The district must follow the procedures outlined in 33 CFR part 329.14 to make a determination that water is a navigable water of the United States subject to Section 10 of the RHA.

MVP

SUBJECT: 2023 Rule, as amended, Approved Jurisdictional Determination in Light of *Sackett v. EPA*, 143 S. Ct. 1322 (2023), 2025-01181-MMP

- a. Describe aquatic resources and other features within the review area identified in the 2023 Rule as amended as not “waters of the United States” even where they otherwise meet the terms of paragraphs (a)(2) through (5). Include the type of excluded aquatic resource or feature, the size of the aquatic resource or feature within the review area and describe how it was determined to meet one of the exclusions listed in 33 CFR 328.3(b).<sup>7</sup>

The excluded features within the review area include Wet Ditches 1 and 2, as shown on Figure 1 of 6 on the attached figures. These features are being evaluated as Paragraph (b)(3) excluded waters because they were constructed in upland, drain only upland, do not carry relatively permanent flow, and are not relocated tributaries.

Wet Ditches 1 and 2 are roadside ditches that were constructed in upland to convey runoff along TH 40. Desktop resources, including the USA Soils Hydric Class and the National Wetland Inventory (NWI) do not identify wetlands or hydric soils in the area of Wet Ditches 1 and 2. TH 40 has been constructed since at least 1992, according to a historic aerial photo. Additionally, a USGS topographic map from 1953 identifies the area of Wet Ditches 1 and 2 as upland. This topographic map denotes TH 40 as a roadway with more than two lanes. Wet Ditch 1 and 2 drain upland and were constructed in upland.

Considering the information above, Wet Ditches 1 and 2 meet the criteria for exclusion under Paragraph (b)(3) of the 2023 “Revised Definition of ‘Waters of the United States’; Conforming” 88 FR 61964 Final Rule and are not subject to regulation under Section 404 of the Clean Water Act (CWA).

- b. Describe aquatic resources and features within the review area that were determined to be non-jurisdictional because they do not meet one or more categories of waters of the United States under the 2023 Rule as amended (e.g., tributaries that are non-relatively permanent waters; non-tidal wetlands that do not have a continuous surface connection to a jurisdictional water).

N/A

9. DATA SOURCES. List sources of data/information used in making determination. Include titles and dates of sources used and ensure that information referenced is available in the administrative record.

---

<sup>7</sup> 88 FR 3004 (January 18, 2023)

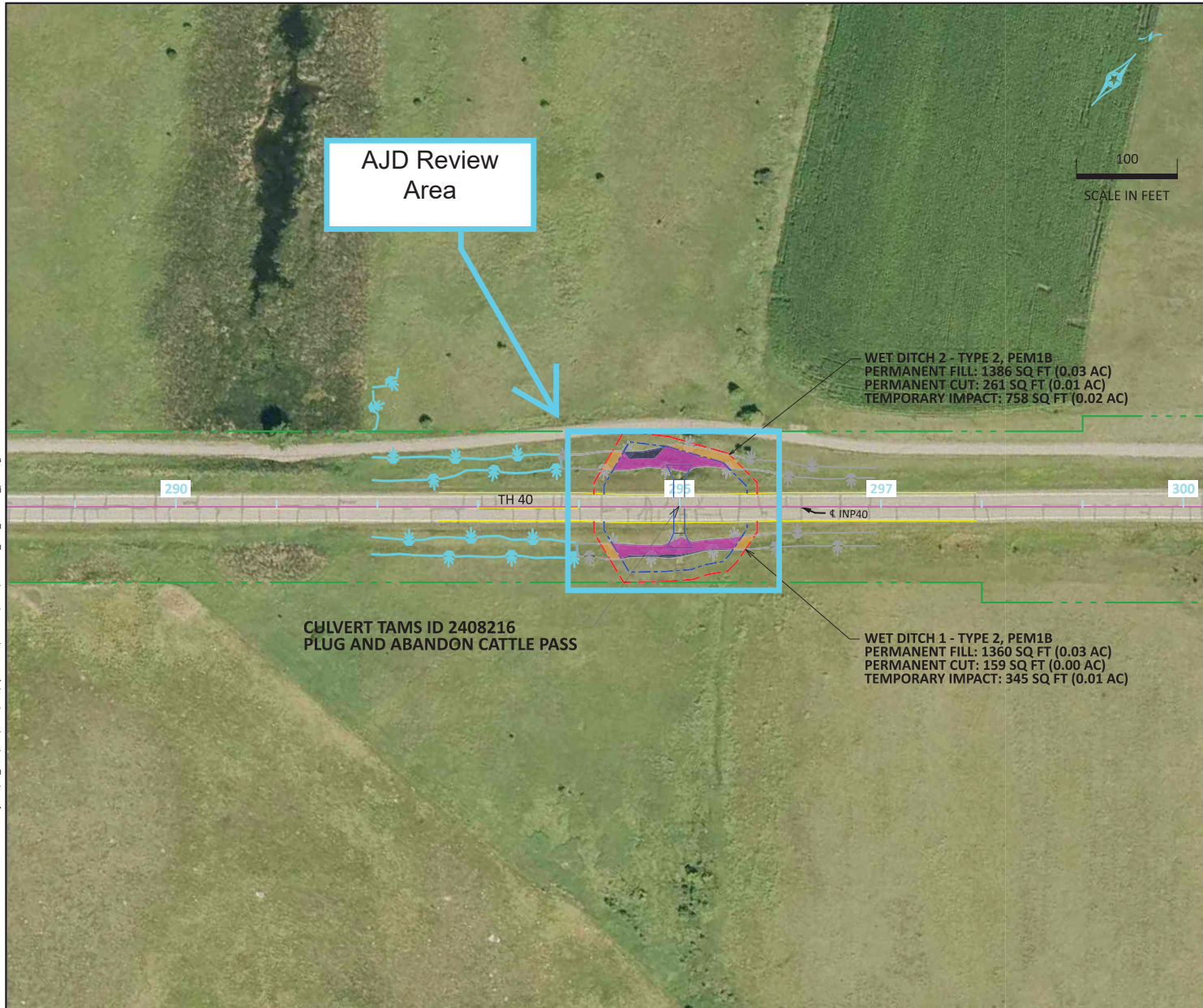
MVP

SUBJECT: 2023 Rule, as amended, Approved Jurisdictional Determination in Light of *Sackett v. EPA*, 143 S. Ct. 1322 (2023), 2025-01181-MMP

- a. Wetland Delineation Reports completed by Minnesota DOT in in August of 2022 and in November of 2024.
- b. USGS Topographic Map from 1954 and 2022.
- c. Google Earth aerial photos from 1992 and 2025.
- d. 3DEP 2-ft, 5-ft, 10-ft, and 15-ft Contour maps, MNDNR- Hillshade, USA Soils Hydric Class, and NWI accessed on the National Regulatory Viewer.

10. OTHER SUPPORTING INFORMATION. N/A

11. NOTE: The structure and format of this MFR were developed in coordination with the EPA and Department of the Army. The MFR's structure and format may be subject to future modification or may be rescinded as needed to implement additional guidance from the agencies; however, the approved jurisdictional determination described herein is a final agency action.



**LEGEND**

- CONSTRUCTION LIMITS
- LIMITS OF DISTURBANCE
- EXISTING CULVERT
- MNDOT RIGHT OF WAY

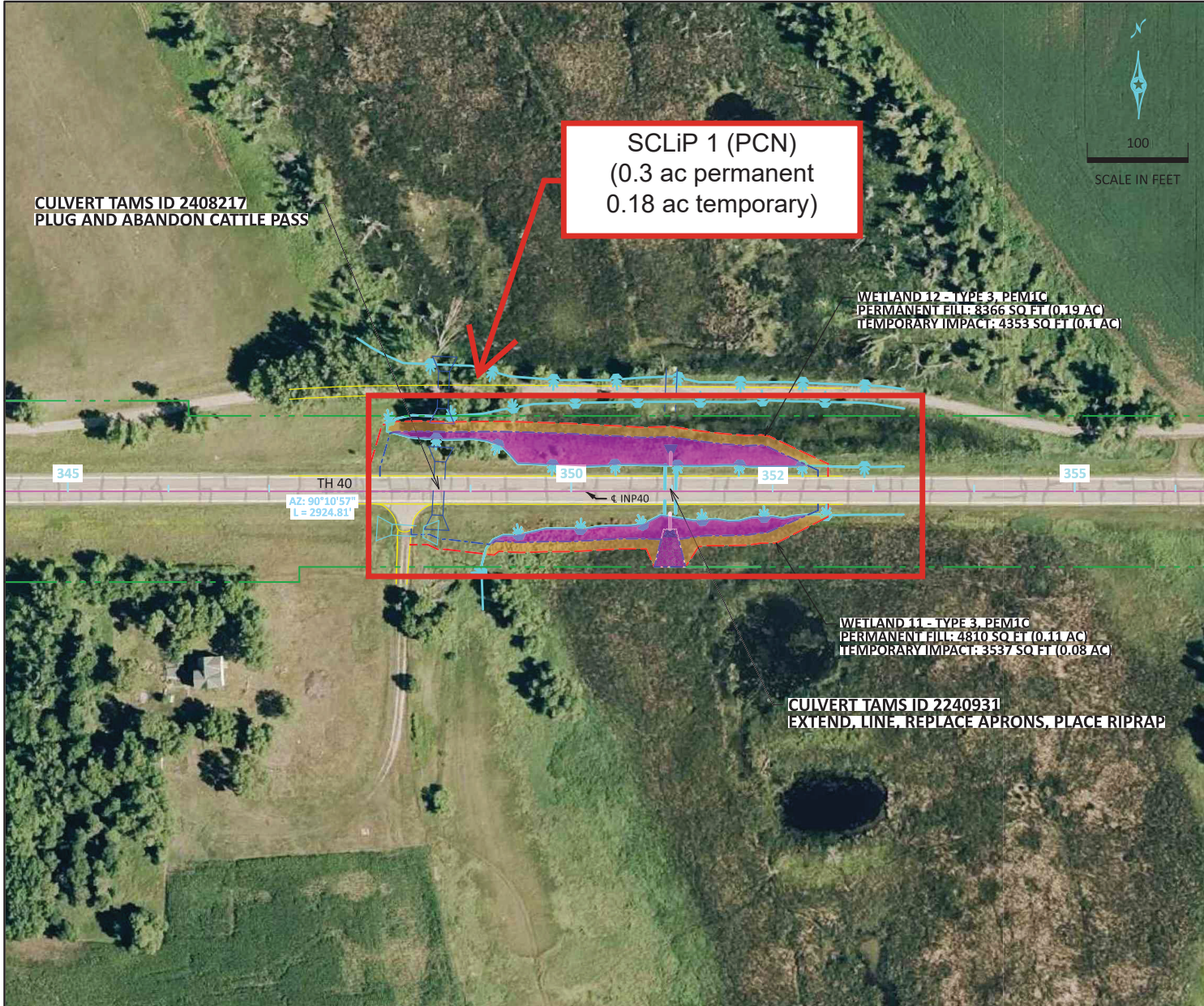
**DELINEATION**

- WETLAND
- WET DITCH

**AQUATIC RESOURCES IMPACTS**

- PERMANENT FILL
- PERMANENT CUT
- TEMPORARY IMPACTS

**MVP-2025-01181-MMP**  
Figure 1 of 6



**LEGEND**

- CONSTRUCTION LIMITS
- LIMITS OF DISTURBANCE
- EXISTING CULVERT
- MNDOT RIGHT OF WAY
- RIPRAP

**DELINEATION**

- WETLAND

**AQUATIC RESOURCES IMPACTS**

- █ PERMANENT FILL
- █ TEMPORARY IMPACTS

MVP-2025-01181-MMP  
Figure 2 of 6



A.1. PLAN VIEW

SP 3701-90	SHEET NO	2
(TH 40)	TOTAL SHEETS	2