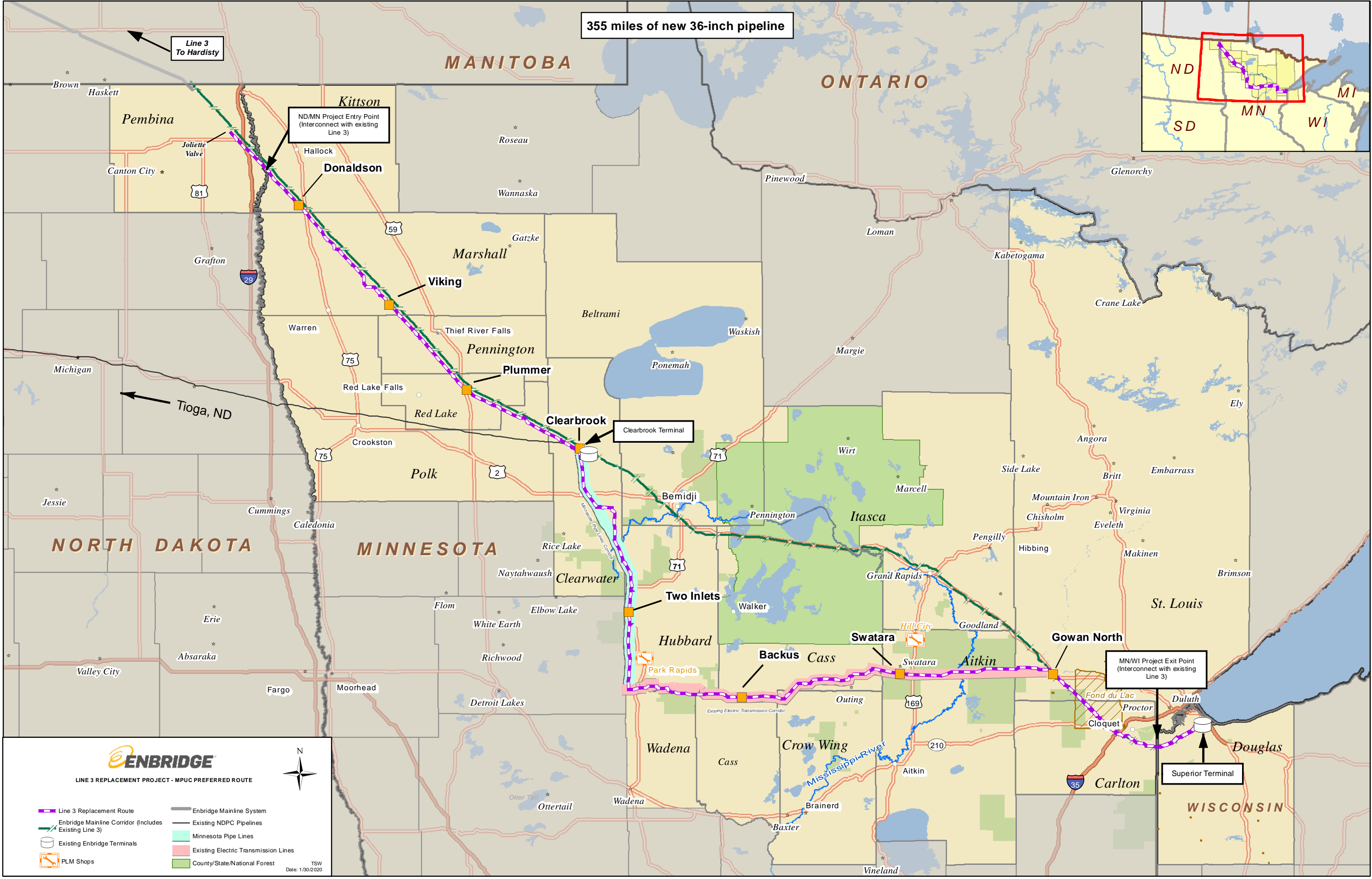
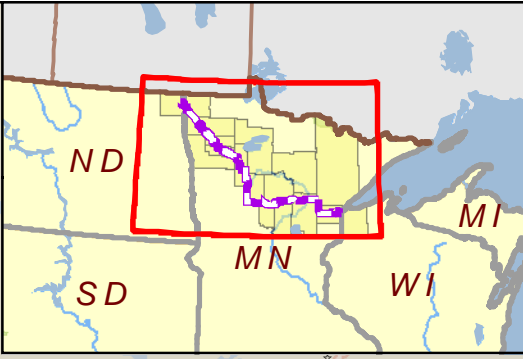


355 miles of new 36-inch pipeline



Line 3 To Hardisty

ND/MN Project Entry Point (Interconnect with existing Line 3)

Clearbrook Terminal

MN/WI Project Exit Point (Interconnect with existing Line 3)

Superior Terminal



LINE 3 REPLACEMENT PROJECT - MPUC PREFERRED ROUTE



- Line 3 Replacement Route
- Enbridge Mainline Corridor (Includes Existing Line 3)
- Existing Enbridge Terminals
- PLM Shops
- Enbridge Mainline System
- Existing NDPC Pipelines
- Minnesota Pipe Lines
- Existing Electric Transmission Lines
- County/State/National Forest

TSW Date: 1/30/2020