



# Unanticipated Discoveries Plan

Enbridge Energy, Limited Partnership • Line 3 Replacement Project

November 2019



## **TABLE OF CONTENTS**

<b>1.0</b>	<b>INTRODUCTION .....</b>	<b>1</b>
<b>2.0</b>	<b>TRAINING OF CONSTRUCTION PERSONNEL.....</b>	<b>1</b>
<b>3.0</b>	<b>UNANTICIPATED DISCOVERY CONDITIONS .....</b>	<b>1</b>
<b>4.0</b>	<b>DISCOVERY OF HISTORIC PROPERTIES.....</b>	<b>3</b>
4.1	Federal Agency Jurisdiction .....	3
4.2	Non-Federal Public Lands.....	4
4.3	Private Lands Subject to State Routing Authority Jurisdiction .....	5
<b>5.0</b>	<b>DISCOVERY OF HUMAN SKELETAL REMAINS .....</b>	<b>6</b>

## **APPENDICES**

Appendix A	North Dakota, Minnesota, and Wisconsin
Appendix B	Unanticipated Discovery Flow Charts

## **ACRONYMS AND ABBREVIATIONS**

ACHP	Advisory Council on Historic Preservation
APE	USACE Section 106 Area of Potential Effect
CFR	Code of Federal Regulations
Enbridge	Enbridge Energy, Limited Partnership
EI	Enbridge Environmental Inspection Staff
FDL	Fond du Lac Band of Lake Superior Chippewa
FDL Reservation	Fond du Lac Band of Lake Superior Chippewa Reservation
Minn. Stat.	Minnesota Statute
Monitor	Third-Party Cultural Resource Monitor
MPUC	Minnesota Public Utilities Commission
NDAC	North Dakota Administrative Code
NDCC	North Dakota Century Code
NPS	National Park Service
NRHP	National Register of Historic Places
OSA	Office of the State Archaeologist
Project	Line 3 Replacement Project
PSC	North Dakota Public Service Commission
RFA	Responsible Federal Agency
SHPO	State Historic Preservation Office
USACE	U.S. Army Corps of Engineers

## **DEFINITIONS**

“Consulting Tribe,” means a Tribe included in the National Historic Preservation Act Section 106 consultation for this Project.

“Cultural Resources,” means locations of human activity, occupation, or usage that contain materials, structures, or landscapes that were used, built, or modified by people.

“Enbridge Environment,” means a member of the Enbridge Environmental Management Team responsible for ensuring compliance with environmental permit conditions and company commitments during construction.

“Enbridge Environmental Inspection Staff,” means the individual(s) responsible for implementing the various environmental requirements within the given construction area.

“Historic Properties,” means any prehistoric or historic district, site, building, structure, or object included in, or eligible for inclusion in, the National Register of Historic Places (“NRHP”). This term includes artifacts, records, and remains that are related to and located within such properties. The term includes properties of traditional religious and/or cultural importance to an Indian tribe and that meet National Register criteria (36 Code of Federal Regulations 800.16((l)(1))).

“Third-Party Agency Monitor,” means agency personnel, either federal or state, who have an oversight role in the cultural resource compliance process during permitting and construction. These individuals may not necessarily be directly involved in field monitoring, but nonetheless have a role in decision making in regards to treatment of Unanticipated Discoveries.

“Third-Party Cultural Resource Monitor,” means a monitor the Permittee hires to address concerns related to observed or suspected Archaeological and Cultural Resources or human remains.

“Traditional Cultural Properties,” means a subtype of historic properties recognized as eligible for listing on the Minnesota State Register of Historic Places and/or NRHP, as further defined in National Register Bulletin #38, “Guidelines for Evaluating and Documenting Traditional Cultural Properties” and other federal guidance.

“Traditional Cultural Landscapes,” means a subtype of historic properties recognized as eligible for listing on the Minnesota State Register of Historic Places and/or NRHP, as further defined by National Park Service Preservation Brief 36, “Protecting Cultural Landscapes: Planning, Treatment and Management of Historic Landscapes” and other federal guidance.

“Traditional Cultural Resources Survey,” which will be conducted in accordance with existing state and federal guidance and requirements, is intended to comply with Enbridge’s federal, state, and contracted obligations to conduct a survey to identify tribal historic properties and other cultural resources that may be affected by the Project, and must include: field surveys to identify Tribal Sites along the entire length of any approved route that identify (preserving confidentiality of sites) (sic); literature review; the results of Tribal consultation; and other matters.

“Tribal Sites,” means historic properties of tribal cultural and/or religious significance to Native American tribes.

“Tribe,” means a federally recognized Indian tribe.

## **1.0 INTRODUCTION**

Enbridge Energy, Limited Partnership (“Enbridge”) is proposing to construct the Line 3 Replacement Project (“Project”), a maintenance-driven project that would replace the existing Line 3 in its entirety within Minnesota, from the North Dakota border to Enbridge’s existing Clearbrook Terminal then continuing to the Wisconsin border.

This Unanticipated Discoveries Plan sets forth the guidelines to be used in the event Historic Properties (including both precontact archaeological or historic/architectural) or human skeletal remains are discovered during construction activities, as well as if unexpected effects to previously identified Historic Properties occur during construction. These measures were developed by Enbridge in accordance with applicable state and federal guidelines. Early and frequent communications are essential in meeting both the spirit and law of those guidelines; therefore, Appendix A shows the most current list of relevant contacts in the event of an unanticipated discovery during construction.

## **2.0 TRAINING OF CONSTRUCTION PERSONNEL**

Prior to construction, Enbridge will train workers about the need to avoid archaeological, historic and cultural properties, how to identify archaeological, historic, and cultural properties, and procedures to follow if undocumented archaeological, historic and cultural properties, including human burials and gravesites, are found during construction. The training is detailed in the Cultural Resource Training Plan document included as Appendix J of the Draft Archaeological and Historic Resources Plan.

## **3.0 UNANTICIPATED DISCOVERY CONDITIONS**

Pipeline construction excavations have the potential to uncover previously unknown archaeological sites and human skeletal remains, as well as many other cultural and natural elements such as modern refuse and faunal remains. While environmental surveys can effectively eliminate most discoveries during construction, Enbridge is aware that Project planning should anticipate even the remote possibility of a discovery. Although provisions in construction documents are established to avoid direct impacts to identified archaeological sites/Historic Properties, the intent of this plan is also to have provisions applicable to any instances where previously identified archaeological sites/Historic Properties are directly impacted in an unexpected/unanticipated manner during construction.

The Third-Party Cultural Resource Monitor (“Monitor”) and the Enbridge Environmental Inspection Staff (“EI”) will have the primary responsibility of initially distinguishing discoveries of significant archaeological and cultural resource sites or human skeletal remains from those that are neither. The unanticipated discovery of significant archaeological and cultural resource sites and human skeletal remains would require ceasing construction activities at the find location followed by a coordinated consultation effort among Enbridge, permitting agencies, landowners, and other interested parties, which may include Native American tribes. In the event that a suspected discovery is determined not to involve an archaeological or cultural resource site or human skeletal remains, construction would resume and there would be no need of the consultation process as outlined above; however, documentation of the event must be made and can include notes, photographs, and drawings as appropriate.

When possible archaeological and cultural materials or suspected human skeletal remains are identified during ground disturbing activities within the construction corridor, the Monitor, the EI, and the Third-Party Agency Monitor will be notified immediately of the discovery.

1. Immediately following notification of the discovery, the EI shall:
  - (a) Establish and delineate a 25-foot buffer around the edge of the discovery (using flagging and/or fencing), advise the on-site construction manager to halt all ground-disturbing activities within the buffered area until otherwise notified by Enbridge Environment, and implement measures to protect the discovery from looting and vandalism, including a 24-hour watch, if necessary; and
  - (b) Contact a qualified Professional Archaeologist (possible archaeological materials) meeting the Professional Qualification Standards of the Secretary of Interior as stated in Title 48 Federal Regulation 44716 and/or Physical Anthropologist (suspected human skeletal remains) with a graduate degree in said discipline and a recognized body of work in the professional community, to conduct an assessment of the discovery. The Professional Archaeologist should meet the qualification standards outlined in 36 Code of Federal Regulations ("CFR") Part 61 in order to conduct the assessment. The Physical Anthropologist must be acknowledged as competent to positively identify human skeletal remains during the initial event of their discovery. As indicated below, this individual will work closely with the Office of the State Archaeologist ("OSA") who has the statutory responsibility to authenticate human burials in Minnesota.
2. When contacted by the EI, the Professional Archaeologist shall gather additional information from the discovery area and assess the potential significance and condition and integrity of the discovery according to the guidelines established by the National Park Service ("NPS") in Bulletins 15 and 36 and their amendments:
  - (a) The Professional Archaeologist will determine whether or not the discovery is an archaeological site or cultural resource over 45 years of age. If the discovery is an archaeological site or cultural resource greater than 45 years of age, the Professional Archaeologist will record as much information as possible to secure a Smithsonian Trinomial Number from the appropriate state agency. The EI would then notify Enbridge Environment to initiate the process outlined in Section 4.0 below.
  - (b) If the discovery is not an archaeological site or cultural resource greater than 45 years of age, the Professional Archaeologist will document the discovery for the record and Enbridge's EI will advise the on-site construction manager to restart ground-disturbing activities.
3. When contacted by the EI, the Physical Anthropologist shall investigate the site to make an assessment of the likely nature of the remains:
  - (a) If the remains are likely human, then the EI would notify Enbridge Environment to initiate the process outlined in Section 5.0 below as they have access to multiple forms of communication to quickly follow the procedures outlined in this plan.

- (b) If the discovery does not represent human skeletal remains, the Physical Anthropologist will document the discovery for the record and Enbridge's EI will advise the on-site construction manager to restart ground-disturbing activities.

## **4.0 DISCOVERY OF HISTORIC PROPERTIES**

Upon the discovery of an archaeological site or cultural resource greater than 45 years of age, the Professional Archaeologist will advise Enbridge Environment of the proper agency notification procedure and recommend a plan of action for the discovery area. This plan dictates a simultaneous initial notification of both the State Historic Preservation Office ("SHPO") and OSA along with the federal or state agency notification.

- (a) If the discovery falls within the U.S. Army Corps of Engineers ("USACE") Section 106 Area of Potential Effect ("APE"), and thus is subject to federally mandated conditions, Enbridge Environment will advise the Responsible Federal Agency ("RFA"), SHPO, and OSA, of the resource and provide information regarding its significance and condition and integrity (see Section 4.1 below).
- (b) If the discovery is on state land, Enbridge Environment will first advise the land-managing agency of the resource, along with SHPO and OSA, and provide information regarding its significance, condition and integrity (see Section 4.2 below). In those instances in which USACE permit areas/APEs under Section 106 review also occur on state land, provisions of Section 4.0(a) apply. For incidents which occur on state land that are not within USACE permit areas/APEs, then Section 4.0(b) applies.
- (c) If the discovery is on private land, its disposition will be subject to the authority of the appropriate state routing agency (in Minnesota, this is the Public Utilities Commission ("MPUC"), in North Dakota, the Public Service Commission ("PSC")). Enbridge Environment will advise the state routing agency of the resource, along with the SHPO and OSA, and provide information regarding its significance, condition and integrity (see Section 4.3 below). In those instances in which USACE permit areas/APEs under Section 106 review occur on private land, provisions of Section 4.0(a) apply. For incidents which occur on private land that are not within USACE permit areas/APEs, then Section 4.0(c) applies.
- (d) Enbridge and the Fond du Lac Band of Lake Superior Chippewa ("FDL") have separately agreed to procedures for unanticipated discoveries within the FDL Reservation ("FDL Reservation"), and those procedures will be implemented if the discovery is within the FDL Reservation.

## **4.1 FEDERAL AGENCY JURISDICTION**

- (a) Enbridge Environment will notify the RFA of the resource, along with SHPO and OSA and provide information regarding its significance and condition and integrity.
- (b) Within 24 hours of notification, the RFA shall provide notice of the discovery to other parties who may wish to participate in consultation, including but not limited to the appropriate SHPO, OSA, Minnesota Indian Affairs Council, Native American tribal officials, Tribal Historic Preservation Office, and Consulting Tribes, state routing

authority, state agencies (such as the MPUC), land-managing agencies, or private landowner(s), as applicable. After 24 hours, consultation for eligibility and effect will continue in order for avoidance and mitigation options to be developed.

- (c) The RFA shall have 5 calendar days following notification to determine the discovery's eligibility for listing on the National Register of Historic Places ("NRHP") in consultation with the appropriate SHPO and other consulting parties. The RFA may extend the review period by an additional 7 calendar days by providing written notice to consulting parties prior to the expiration of the 5-calendar-day period. The RFA shall provide Enbridge Environment with avoidance or mitigation treatment options by the end of the 5-calendar-day period.
- (d) For properties determined eligible for listing on the NRHP pursuant to (c) above, Enbridge Environment shall notify the RFA and other consulting parties of Enbridge's proposed treatment measures to resolve adverse effects to the discovered resource. Enbridge will confer with their consulting archaeologist in developing avoidance or mitigation options. The consulting parties shall comment on the proposed treatment measures within 48 hours. The RFA shall ensure that the recommendations of the consulting parties are considered prior to granting approval of Enbridge-proposed treatment measures. Once approval has been granted by the RFA, Enbridge Environment shall carry out the approved treatment measures and, after doing so, Enbridge may resume construction.
- (e) In the event of any disagreements between the consulting parties regarding the NRHP eligibility of the newly-discovered property or the treatment measures proposed to mitigate adverse effects to the property, the RFA shall seek and take into account the recommendations of the Advisory Council on Historic Preservation ("ACHP"). Within 48 hours of receipt of a request, ACHP shall provide the RFA with recommendations on how to resolve the dispute.
- (f) If, after consultation, the RFA determines that the discovery does not represent an NRHP-eligible resource, the RFA will direct Enbridge Environment to resume ground-disturbing activities at the discovery location at its discretion.

## **4.2 NON-FEDERAL PUBLIC LANDS**

- (a) Enbridge Environment will notify the land-managing agency of the resource, along with SHPO and OSA and provide information regarding its significance and integrity. The OSA has the discretion to notify Native American tribal officials, state routing authority, and other state agencies as appropriate.
- (b) The land-managing agency will have 5 calendar days following notification to consult with the appropriate OSA, the SHPO (per Minnesota Statute ("Minn. Stat.") 138.40 in Minnesota), and other consulting parties including Tribes, as necessary, about the assessment of the discovery to determine its eligibility, avoidance, and/or mitigation measures. NPS criteria of eligibility for listing on the NRHP will be considered as a guideline to determine the significance of the find and OSA and SHPO will be consulted during the assessment, but the land-managing agency is not obliged to apply NPS standards solely in making its decision. The land-managing agency may assume the resource is eligible for listing on the NRHP while consultation occurs and



may require avoidance, impact minimization, or mitigation. The land-managing agency may extend the review period by an additional 7 calendar days by providing written notice to consulting parties prior to the expiration of the 5-calendar-day period. The land-managing agency shall provide Enbridge Environment with avoidance or mitigation treatment options by the end of the 5-calendar-day period.

- (c) For properties determined to be historic, Enbridge Environment shall simultaneously notify the land-managing agency, SHPO, OSA, and Consulting Tribes, and other consulting parties with information regarding the discovery of the find and any treatment and measures it proposes for resolving adverse effects to the resource. The consulting parties shall provide their views on the proposed treatment measures to Enbridge Environment, the land-managing agency and other consulting parties within 48 hours. The land-managing agency shall ensure that the recommendations of the consulting parties are considered prior to granting approval of Enbridge's proposed treatment measures. Once approval has been granted by the land-managing agency, Enbridge Environment shall carry out the approved treatment measures and, after doing so, Enbridge may resume construction.
- (d) If, after consultation, the land-managing agency determines that the discovery does not represent an NRHP-eligible or otherwise important resource, the land-managing agency will direct Enbridge Environment to resume ground-disturbing activities, at its discretion, at the discovery location.

#### **4.3 Private Lands Subject to State Routing Authority Jurisdiction**

- (a) Enbridge Environment will notify the state routing authority of the resource, along with SHPO and OSA and provide information regarding its significance and integrity.
- (b) Within 24 hours of notification, the state routing authority shall provide notice of the resource to other parties, including, but not limited to, the appropriate SHPO, the OSA, Native American tribal officials, state agencies, and private landowner(s), as applicable to comply with the permit and to notify the parties that the resource requires determinations of eligibility and effect in order to develop avoidance and/or mitigation options.
- (c) The state routing authority will have 5 calendar days following notification to consult with the SHPO, OSA, and other consulting parties as appropriate, about assessing the discovery. Criteria of eligibility for listing on the NRHP will be considered as a guideline to determine the significance of the find and SHPO and OSA may be consulted during the assessment, but the state routing authority is not obliged to apply the standards in making its decision. The state routing authority may assume the resource is eligible for listing on the NRHP while consultation occurs and may require avoidance, impact minimization, or mitigation. Construction may not resume until the appropriate SHPO, OSA, or other consulting parties have developed avoidance or mitigation strategies and notified Enbridge Environment. The state routing authority shall provide Enbridge Environment with avoidance or mitigation treatment options by the end of the 5-calendar-day period.
- (d) For properties eligible for listing on the NRHP, Enbridge Environment shall notify the state routing authority and other consulting parties of the treatment measures it



proposes to resolve impacts to the resource. The consulting parties shall provide their views on the proposed treatment measures within 48 hours. The state routing authority shall ensure that the recommendations of the consulting parties are considered prior to granting approval of Enbridge's proposed treatment measures. Once approval has been granted by the state routing authority, Enbridge Environment shall carry out the approved treatment measures and, after doing so, Enbridge may resume construction.

- (e) If, after consultation, the state routing authority determines that the discovery does not represent an NRHP-eligible or otherwise important resource, the state routing authority will direct Enbridge Environment to resume ground-disturbing activities, at its discretion, at the discovery location.

## **5.0 DISCOVERY OF HUMAN SKELETAL REMAINS**

1. When unmarked human burial or skeletal remains are encountered during construction activities, Enbridge will comply with all applicable laws, specifically:
  - (a) North Dakota's "Protection of human burial sites, human remains, and burial goods – Unlawful acts – Penalties – Exceptions" law (North Dakota Century Code ("NDCC") §23-06-27) and its accompanying administrative rules (North Dakota Administrative Code ("NDAC") §40-02-03);
  - (b) Minnesota's "Private Cemeteries Act" (Minn. Stat. §307.08); and
  - (c) Wisconsin Statute §157.70. In Wisconsin, in the case of accidental discoveries, state law does not distinguish between historic or prehistoric burials in the requirements for initial notifications or disinterment.
2. In the event a human burial or skeletal remains are encountered during ground-disturbing construction activity, all construction shall immediately cease in the vicinity, and Enbridge Environment will implement the following notification procedures:
  - (a) North Dakota – notify the local law enforcement agency (county sheriff) and the State Historical Society of North Dakota (which includes SHPO) as required by NDCC §23-06-27. Pursuant to NDAC §40-02-03-03, upon receiving notification of the discovery of human skeletal remains, a human burial, or burial goods, the local law enforcement agency shall, as soon as practicable, report the receipt of such notification to the State Historical Society of North Dakota and the North Dakota State Department of Health and Consolidated Laboratories. These two state agencies shall commence the initial examination of the discovery within 24 hours of notification.
  - (b) Minnesota – notify the local law enforcement agency (county sheriff). As required by Minn. Stat. §307.08, Enbridge Environment will also notify the OSA of the find.
  - (c) Wisconsin – notify the local law enforcement agency (county sheriff) and SHPO as stipulated by Wisconsin Statute §157.70.

3. Enbridge Environment also shall promptly notify the RFA, land-managing agency, or state routing authority of the find and consult regarding the appropriate measures to handle the discovery.

After permission to resume construction has been issued by the RFA, land-managing agency, or state routing authority, Enbridge's EI will advise the on-site construction manager to restart ground-disturbing activities.

## **Appendix A**

### **North Dakota, Minnesota, and Wisconsin Contact Lists**

Contact Lists North Dakota, Minnesota, and Wisconsin		
State/County/Agency	Contact	Address/Telephone
<b>FEDERAL</b>		
U.S. Army Corps of Engineers	Nancy Komulainen-Dillenburg, St. Paul District Archaeologist	U.S. Army Corps of Engineers 4111 Technology Drive NE Suite 295 Bemidji, MN 56601 Telephone: (651) 290-5340 E-mail: Nancy.S.Komulainen-Dillenburg@usace.army.mil
Bureau of Indian Affairs	Timothy Guyah, Midwest Regional Office Archaeologist	5600 American Blvd W, Ste 500 Bloomington, MN 55437 Telephone: (612) 725-4512 E-mail: timothy.guyah@bia.gov
Fond du Lac Band of Lake Superior Chippewa Reservation Business Committee	Kevin DuPuis, Chairman	1720 Big Lake Road, Cloquet, MN 55720 Telephone: (218) 879-4593 Fax: (218) 879-4146 E-mail: kevindupuis@fdlrez.com
Fond du Lac Band of Lake Superior Chippewa Tribal Historic Preservation Officer ("THPO")	Jill Hoppe, THPO	1720 Big Lake Road, Cloquet, MN 55720 Telephone: (218) 878-7124 E-mail: JillHoppe@fdlrez.com
<b>NORTH DAKOTA</b>		
Enbridge	TBD, Lead Environmental Inspector	Cellphone: TBD E-mail: TBD
State Historical Society of North Dakota	Fern Swenson, Deputy SHPO	State Historical Society of North Dakota 612 East Boulevard Avenue Bismarck, ND 58505-0830 Telephone: (701) 328-2666 Fax: (701) 328-3710 E-mail: fswenson@nd.gov
North Dakota Geological Survey	Edward C. Murphy, State Geologist	North Dakota Industrial Commission, Department of Mineral Resources, North Dakota Geological Survey 1016 East Calgary Ave. Bismarck, ND 58503 Telephone: (701) 328-8000
Pembina County	Terry Meidinger, County Sheriff	308 Courthouse Drive Cavalier, ND 58220 Telephone: (701) 265-4122
<b>MINNESOTA</b>		
Enbridge	TBD, Lead Environmental Inspectors	Cellphone: TBD E-mail: TBD
Minnesota State Historic Preservation Office	Sarah Beimers, Environmental Review Program Manager	Minnesota State Historic Preservation Office Department of Administration 50 Sherburne Avenue, Suite 203 St. Paul, MN 55155 Telephone: (651) 201-3290 E-mail: sarah.beimers@state.mn.us
Minnesota State Historic Preservation Office	David Mather, SHPO National Register Archaeologist	Minnesota State Historic Preservation Office Department of Administration 50 Sherburne Avenue, Suite 203 St. Paul, MN 55155 Telephone: (651) 201-3289 E-mail: david.mather@state.mn.us

<p align="center"><b>Contact Lists</b>  <b>North Dakota, Minnesota, and Wisconsin</b></p>		
<b>State/County/Agency</b>	<b>Contact</b>	<b>Address/Telephone</b>
Office of the State Archaeologist	Amanda Gronhovd, Minnesota State Archaeologist	Office of the State Archaeologist Fort Snelling History Center 200 Tower Avenue St. Paul, MN 55111 Telephone: (612) 725-2411 E-mail: Amanda.Gronhovd@state.mn.us
Minnesota Geological Survey	Harvey Thorleifson, Director	Minnesota Geological Survey 2642 University Ave. St. Paul, MN 55114-1057 Telephone: (612) 627-4780, ext. 224
Minnesota Department of Natural Resources (DNR)	TBD	500 Lafayette Rd., St. Paul, MN 55155 Telephone: E-mail:
Minnesota Department of Natural Resources	Mike Magner, DNR Archaeologist	Mike Magner DNR Forestry/ Fish & Wildlife Archaeologist DNR Forestry Resource Assessment Office 483 Peterson Road Grand Rapids, MN 55744 Telephone: (218) 322-2513 E-mail: mike.magner@state.mn.us
Minnesota Public Utilities Commission	Scott Ek	121 7th Place E, Suite 350 Saint Paul, MN 55101 Telephone: E-mail:
Minnesota Indian Affairs Council	Melissa Cerda, Cultural Resource Director	161 St. Anthony Ave, Suite 919 St. Paul, MN 55103 Telephone: (651) 276-2797 E-mail: melissa.cerda@state.mn.us
Kittson	Steve Porter, County Sheriff	410 5 <sup>th</sup> Street South Suite 102 Hallock, MN 56728 Telephone: (218) 843-3535
Marshall	Jason Boman, County Sheriff	208 East Colvin Avenue Suite #1 Warren, MN 56762 Telephone: 218-745-5411 Fax: (218) 745-9203
Pennington	Ray D. Kuznia, County Sheriff	102 1 <sup>st</sup> Street West PO Box 484 Thief River Falls, MN 56701 Telephone: 218-681-6161 Fax: (218) 683-7006
Red Lake	Mitch Bernstein, County Sheriff	124 Langevin Avenue P.O. Box 367 Red Lake Falls, MN 56750 Telephone: (218) 253-2996
Polk	Barb Erdman, County Sheriff	600 Bruce Street P.O. Box 416 Crookston, MN 56716 Telephone: (218) 281-0431
Clearwater	Darin Halverson, Chief Deputy	213 Main Avenue North Bagley, MN 56621 Telephone: (218) 694-6226
Hubbard	Cory Aukes, County Sheriff	301 Court Ave. Park Rapids, MN 56470 Telephone: (218) 737-3331
Wadena	Mike Carr, County Sheriff	415 So Jefferson St Wadena, MN 56482 Telephone: (218) 631-7600

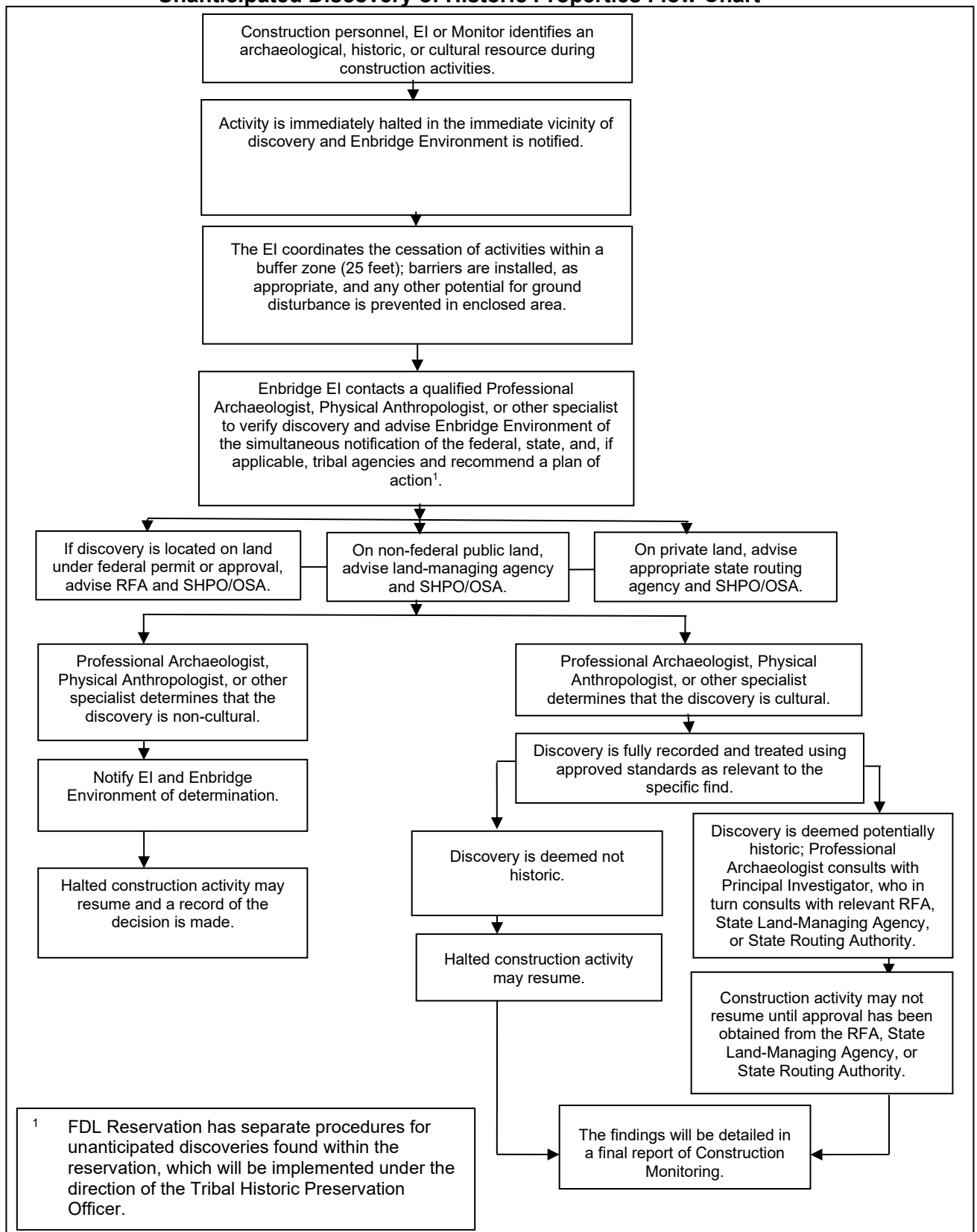
<b>Contact Lists</b> <b>North Dakota, Minnesota, and Wisconsin</b>		
<b>State/County/Agency</b>	<b>Contact</b>	<b>Address/Telephone</b>
Cass	Tom Burch, County Sheriff	303 Minnesota Avenue Walker, MN 56484 Telephone: (218) 547-1424, ext. 309
Crow Wing	Todd Dahl, County Sheriff	304 Laurel St. Brainerd, MN 56401 Telephone: (218) 829-4749
Aitkin	Scott Turner, County Sheriff	217 2nd St. NW, Room 185 Aitkin, MN 56431 Telephone: (218) 927-7435
St. Louis	Ross Litman	100 N 5th Avenue W Room 103 Duluth, MN 55802 Telephone: (218) 726-2340
Carlton	Kelly Lake, County Sheriff	317 Walnut Avenue Carlton, MN 55718 Telephone: (218) 384-3236
<b>WISCONSIN</b>		
Enbridge	Rob Mickelson, Lead Environmental Inspector	Cellphone: (704) 607-8788 E-mail: rmickelson@merjent.com
Wisconsin Historical Society	John Broihahn, State Archaeologist, SHPO	Wisconsin Historical Society, Division of Historic Preservation 816 State Street Madison, WI 53706-1488 Telephone: (608) 264-6500
Wisconsin Geological and Natural History Survey	Ken Bradbury, State Geologist	Wisconsin Geological and Natural History Survey 3817 Mineral Point Road Madison, WI 53705-5100 Telephone: (608) 263-7921
Douglas County	Tom Dalbec, County Sheriff	1316 North 14th Street Superior, WI 54880 Telephone: (715) 395-1371

**Appendix B**

**Unanticipated Discovery Flow Charts**



## Unanticipated Discovery of Historic Properties Flow Chart <sup>1</sup>



## Unanticipated Discovery of Human Remains Flow Chart <sup>1</sup>

