

---

---

**EAU GALLE PROJECT  
MASTER PLAN**

---

---

**APPENDIX B**

**PLATES**

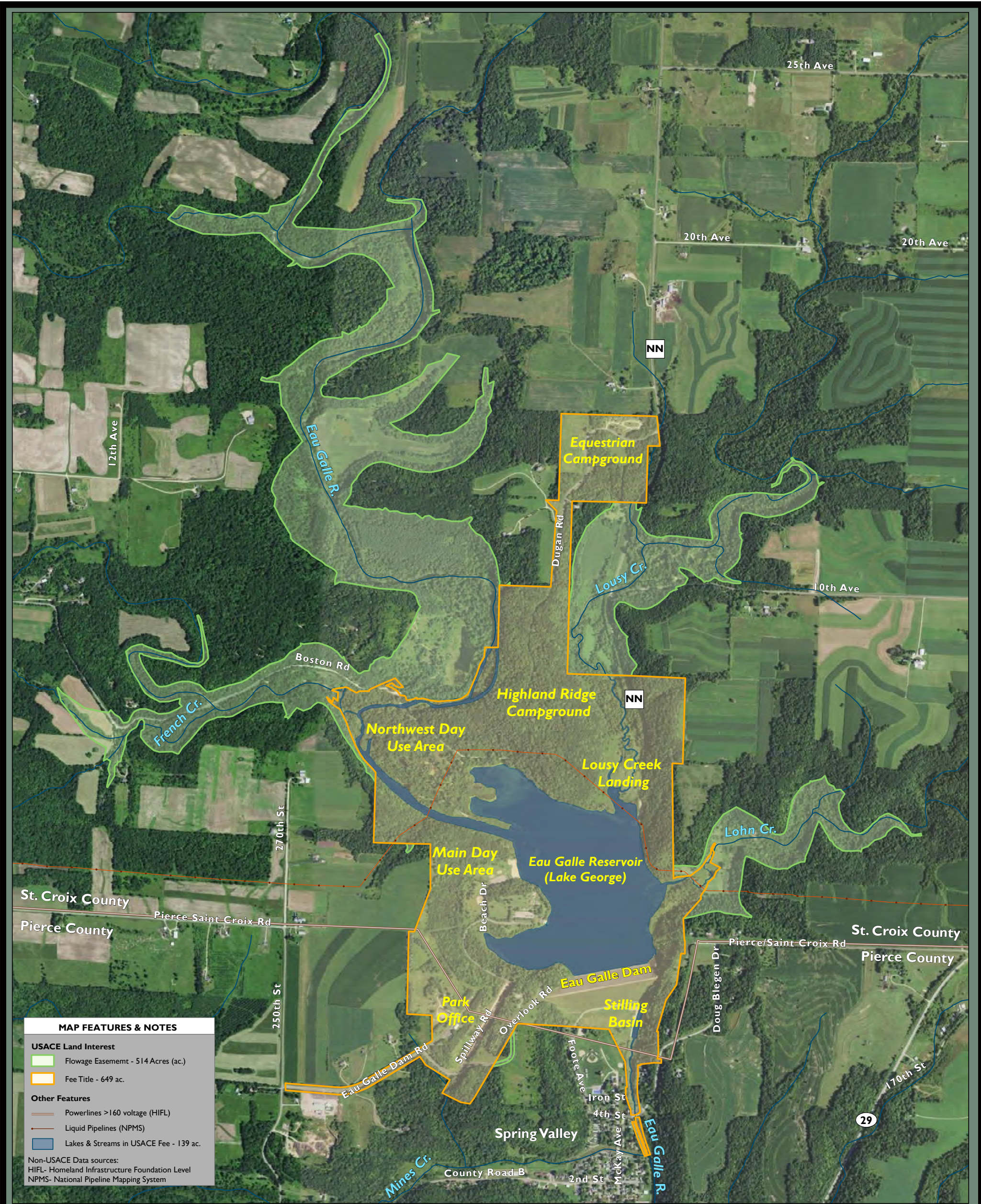
**SPRING VALLEY, WISCONSIN**

**August 2019**



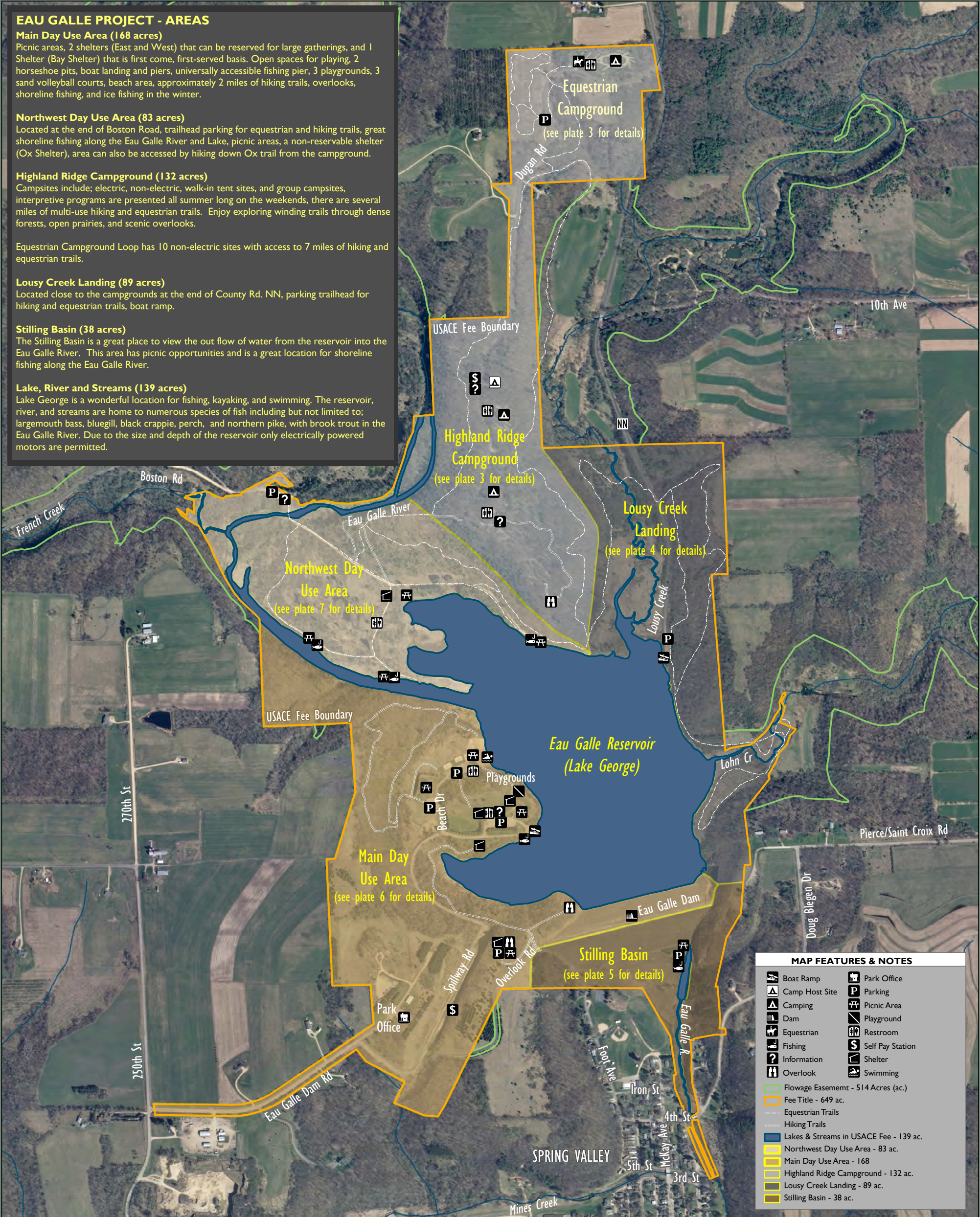
**US Army Corps  
of Engineers®**  
St. Paul District





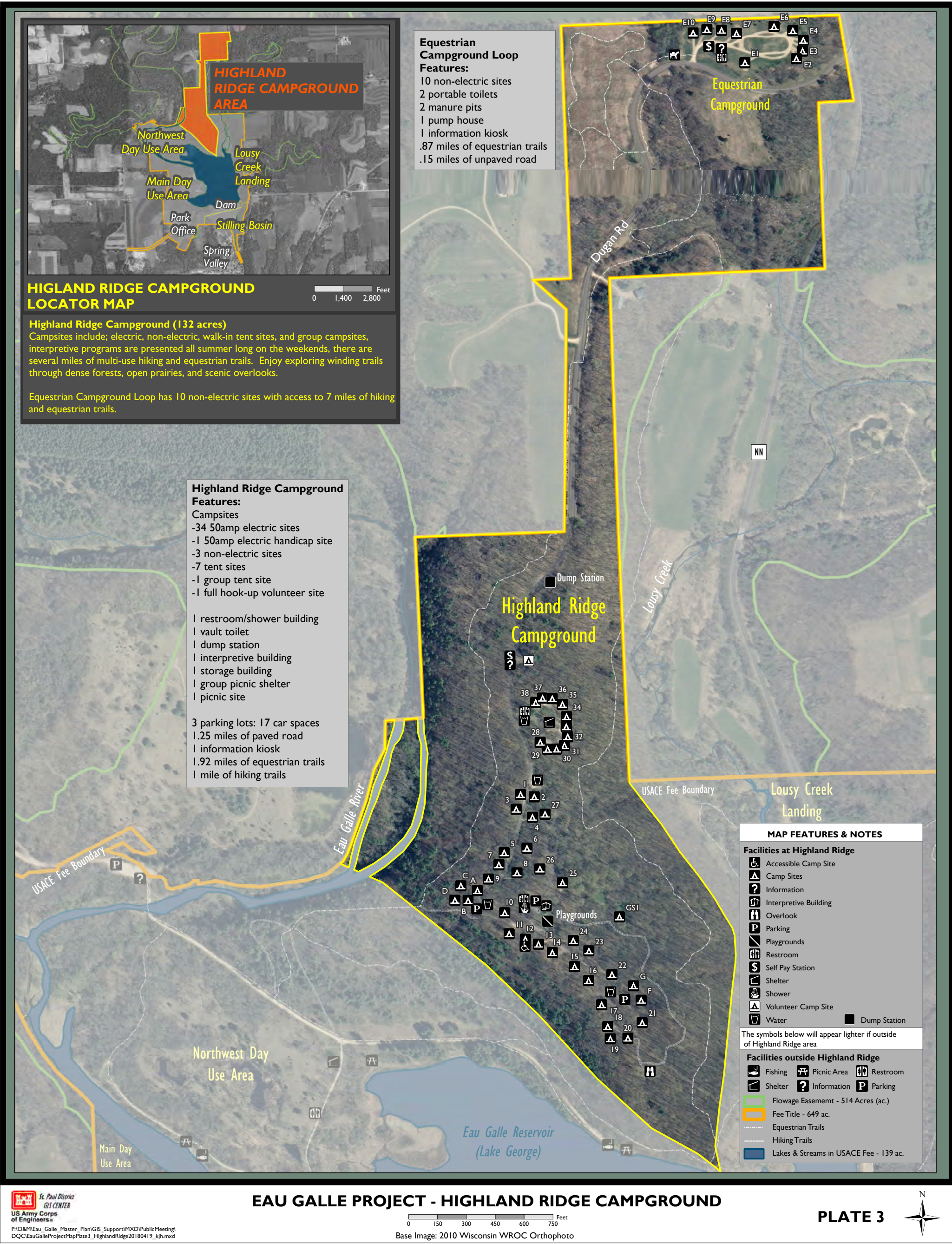
The represented mapped acreages on figures and plates are calculated from GIS polygon data. GIS acres are not the deeded legal acreage. For information on the deeded legal acreage of the project see Table 2 and Chapter 2.16 in the main report.





The represented mapped acreages on figures and plates are calculated from GIS polygon data. GIS acres are not the deeded legal acreage. For information on the deeded legal acreage of the project see Table 2 and Chapter 2.16 in the main report.





St. Paul District  
GIS CENTER  
US Army Corps of Engineers

P:\O&M\Eau\_Galle\_Master\_Plan\GIS\_Support\MXD\PublicMeeting\ DQC\EauGalleProjectMapPlate3\_HighlandRidge20180419\_kjh.mxd

**EAU GALLE PROJECT - HIGHLAND RIDGE CAMPGROUND**

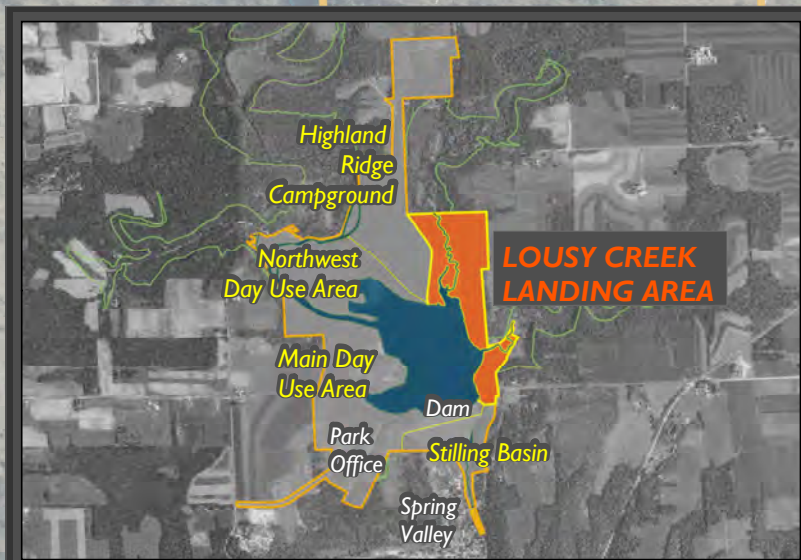
0 150 300 450 600 750 Feet

Base Image: 2010 Wisconsin WROC Orthophoto

**PLATE 3**

The represented mapped acreages on figures and plates are calculated from GIS polygon data. GIS acres are not the deeded legal acreage. For information on the deeded legal acreage of the project see Table 2 and Chapter 2.16 in the main report.

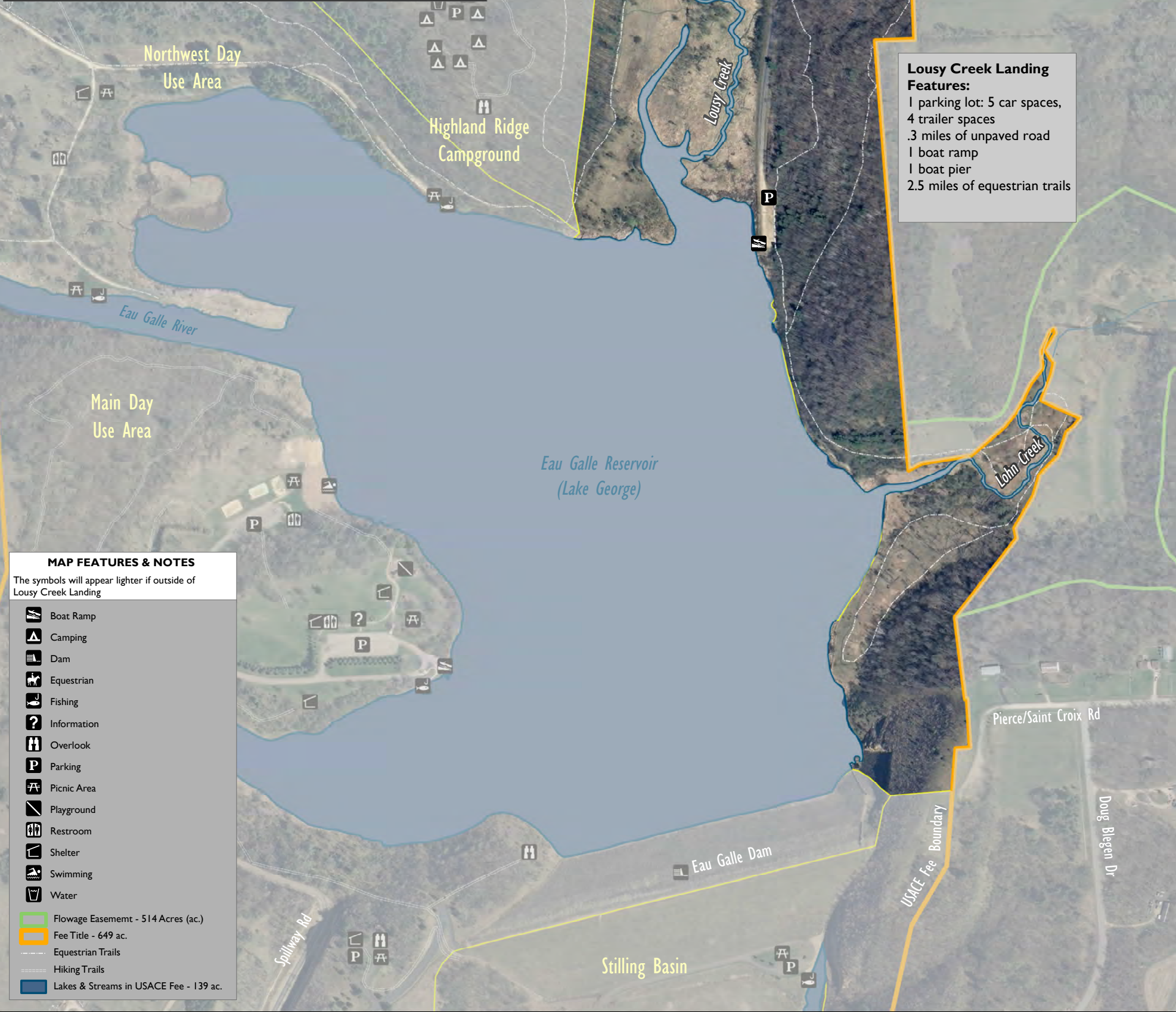




**LOUSY CREEK LANDING LOCATOR MAP**

**Lousy Creek Landing (89 acres)**

Located close to the campgrounds at the end of County Rd. NN, parking trailhead for hiking and equestrian trails, boat ramp.



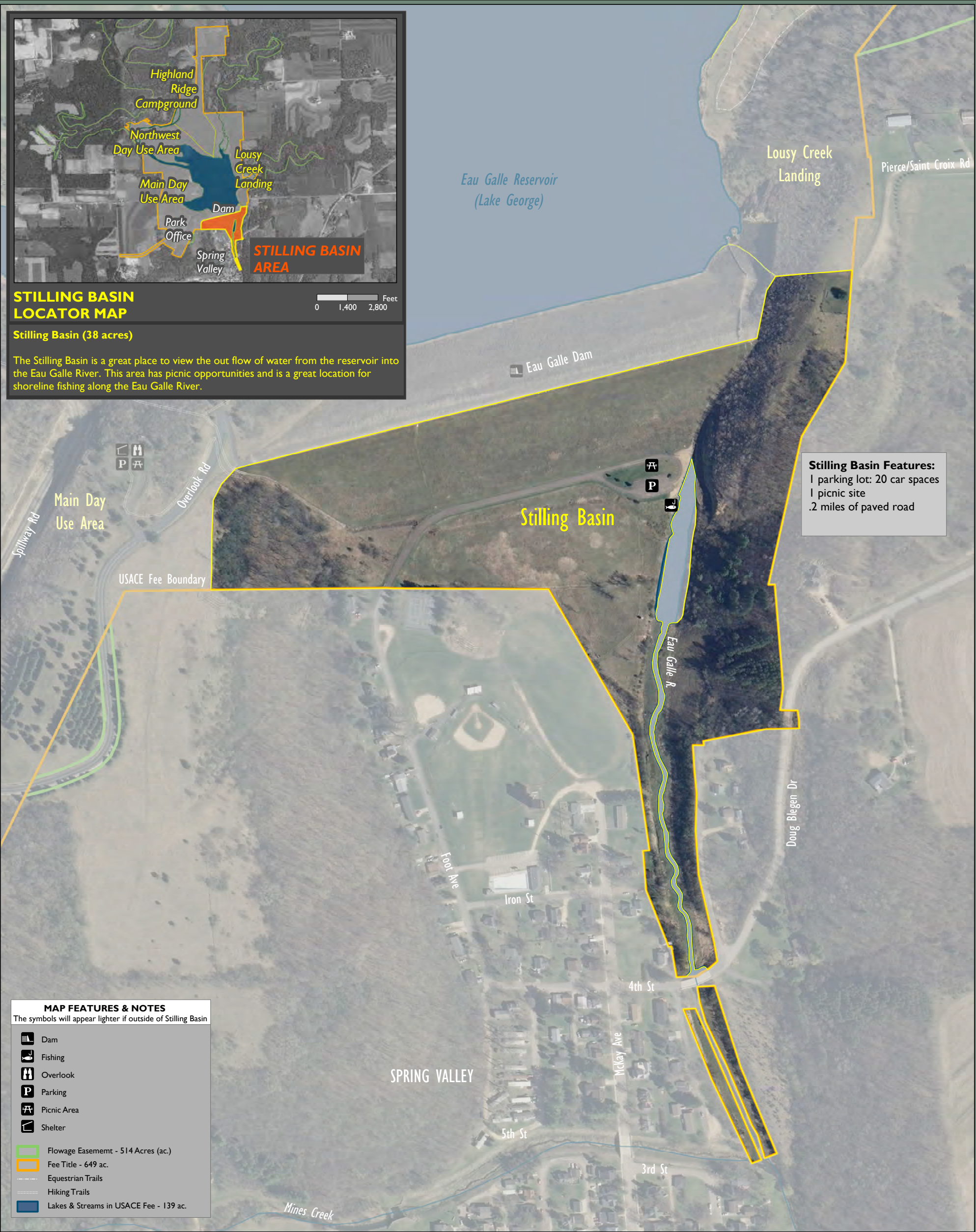
**Lousy Creek Landing Features:**

- 1 parking lot: 5 car spaces, 4 trailer spaces
- .3 miles of unpaved road
- 1 boat ramp
- 1 boat pier
- 2.5 miles of equestrian trails

MAP FEATURES & NOTES	
The symbols will appear lighter if outside of Lousy Creek Landing	
	Boat Ramp
	Camping
	Dam
	Equestrian
	Fishing
	Information
	Overlook
	Parking
	Picnic Area
	Playground
	Restroom
	Shelter
	Swimming
	Water
	Flowage Easement - 514 Acres (ac.)
	Fee Title - 649 ac.
	Equestrian Trails
	Hiking Trails
	Lakes & Streams in USACE Fee - 139 ac.

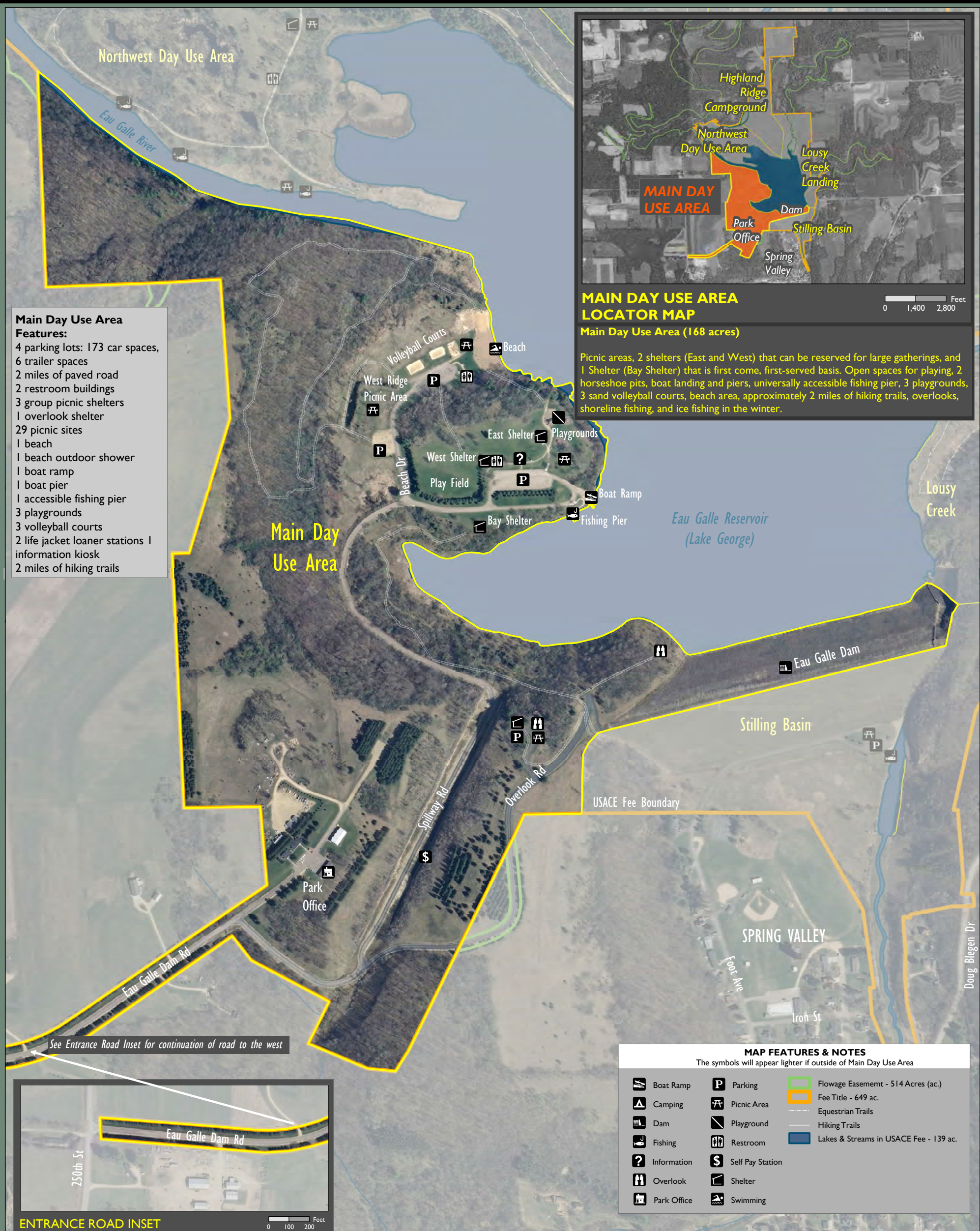
The represented mapped acreages on figures and plates are calculated from GIS polygon data. GIS acres are not the deeded legal acreage. For information on the deeded legal acreage of the project see Table 2 and Chapter 2.16 in the main report.





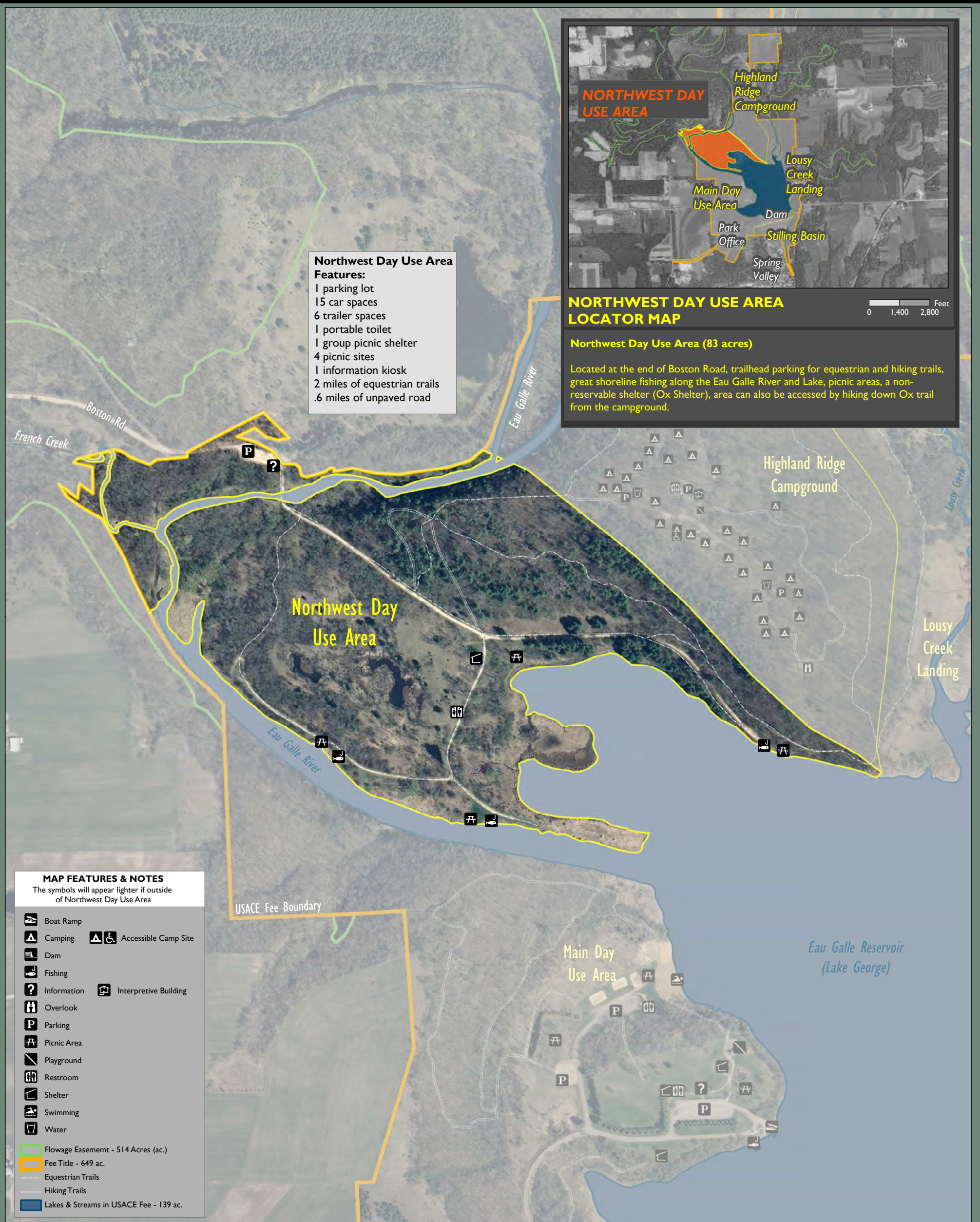
The represented mapped acreages on figures and plates are calculated from GIS polygon data. GIS acres are not the deeded legal acreage. For information on the deeded legal acreage of the project see Table 2 and Chapter 2.16 in the main report.





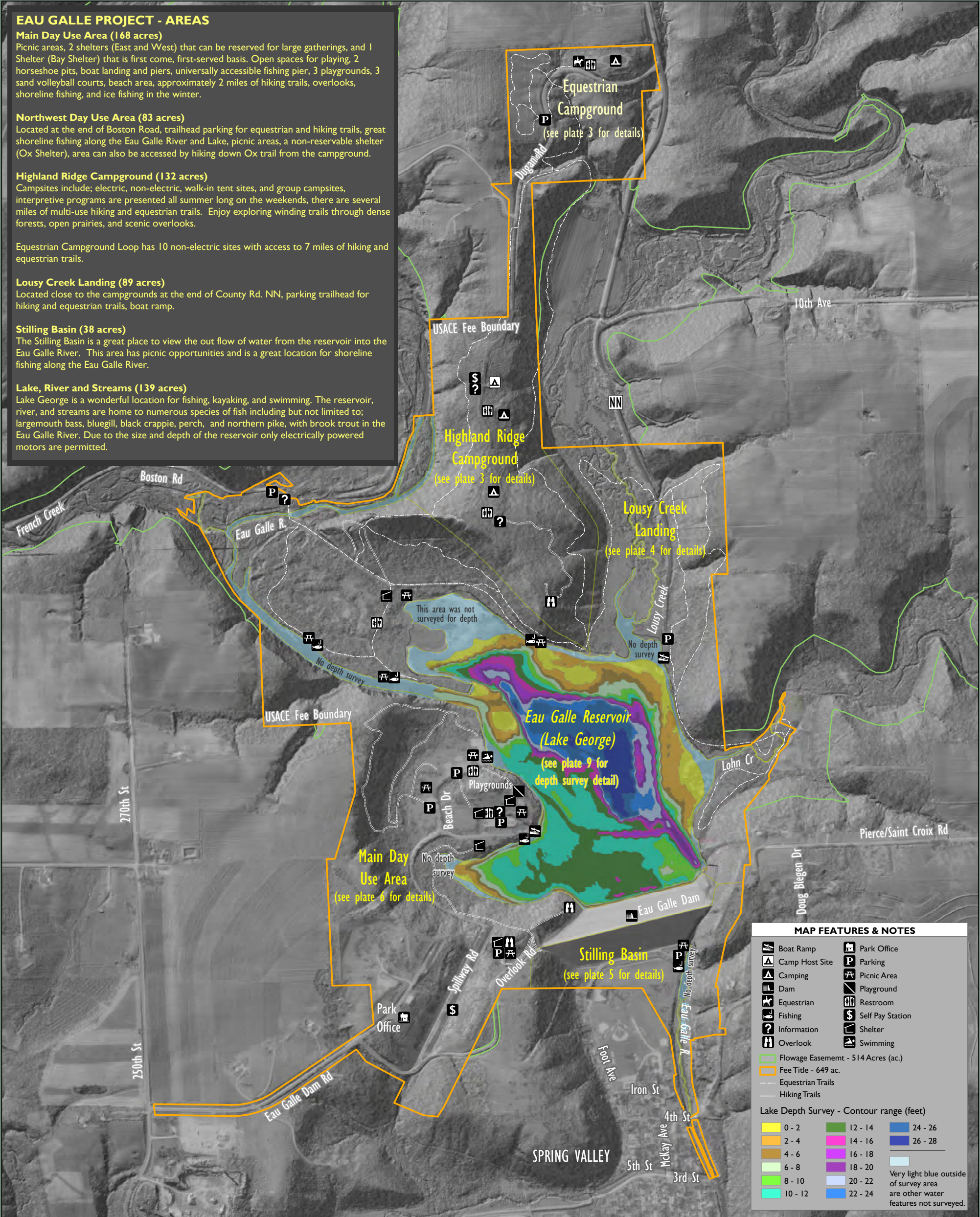
The represented mapped acreages on figures and plates are calculated from GIS polygon data. GIS acres are not the deeded legal acreage. For information on the deeded legal acreage of the project see Table 2 and Chapter 2.16 in the main report.



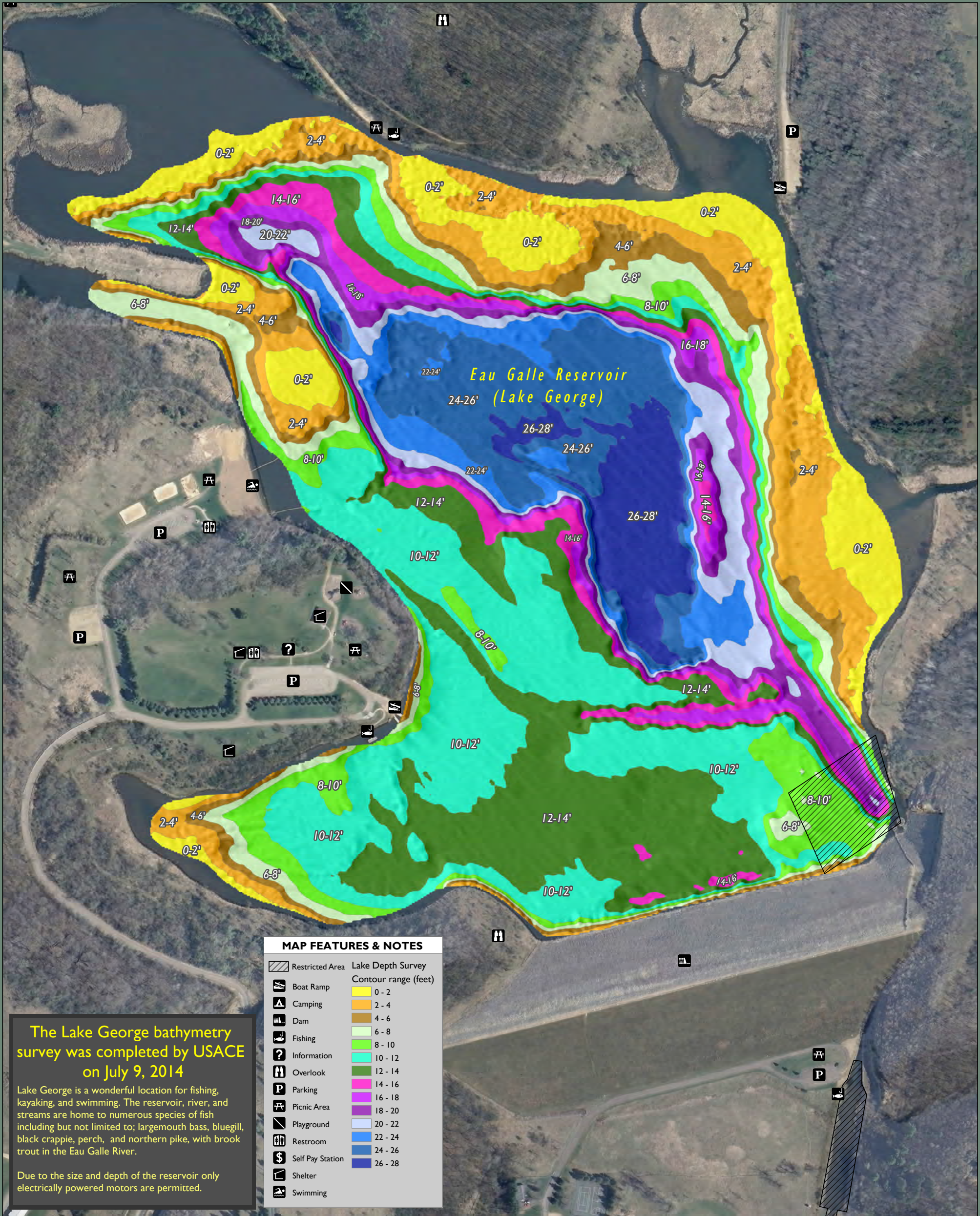


The represented mapped acreages on figures and plates are calculated from GIS polygon data. GIS acres are not the deeded legal acreage. For information on the deeded legal acreage of the project see Table 2 and Chapter 2.16 in the main report.









The Lake George bathymetry survey was completed by USACE on July 9, 2014

Lake George is a wonderful location for fishing, kayaking, and swimming. The reservoir, river, and streams are home to numerous species of fish including but not limited to; largemouth bass, bluegill, black crappie, perch, and northern pike, with brook trout in the Eau Galle River.

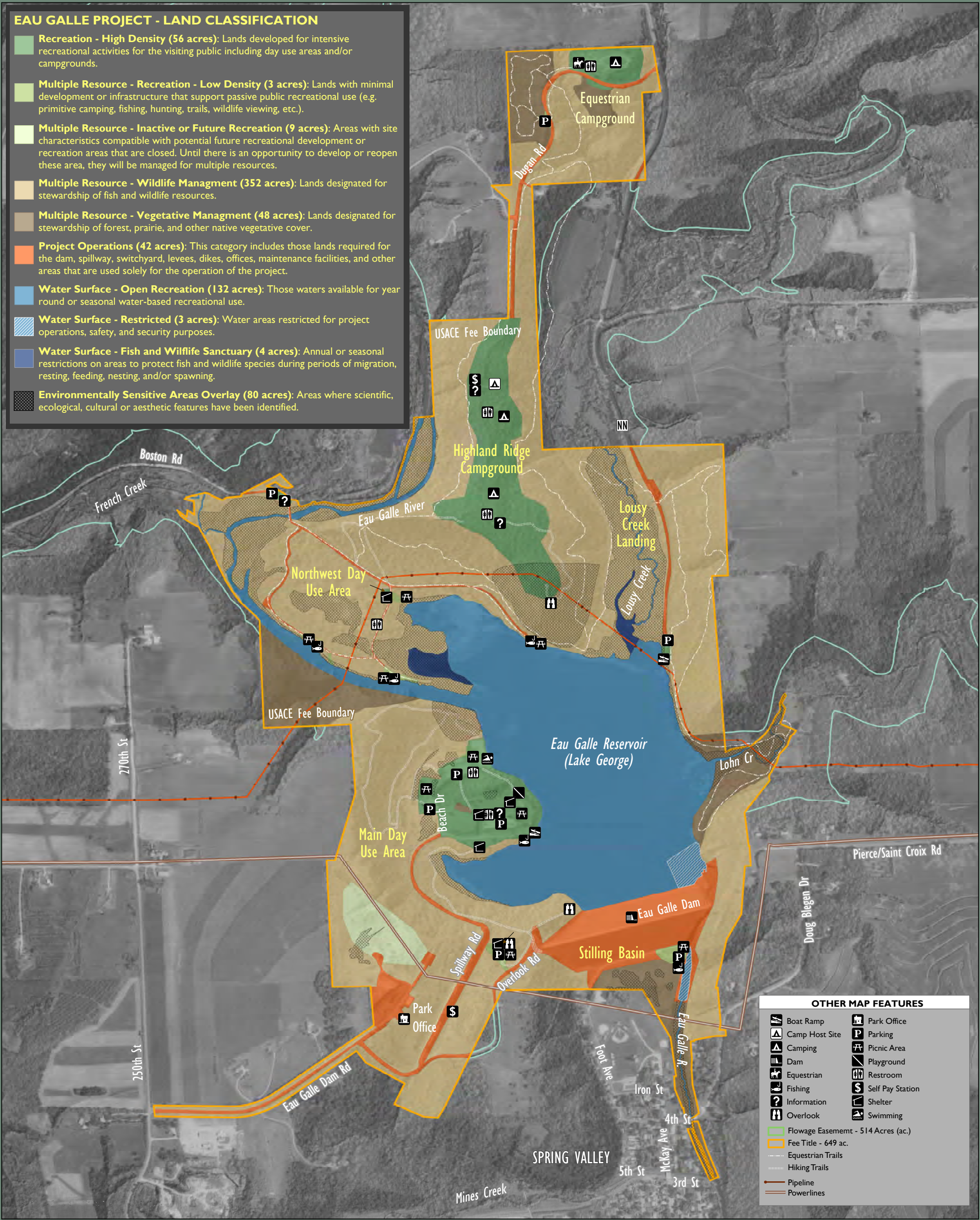
Due to the size and depth of the reservoir only electrically powered motors are permitted.





EAU GALLE PROJECT - LAND CLASSIFICATION

- Recreation - High Density (56 acres):** Lands developed for intensive recreational activities for the visiting public including day use areas and/or campgrounds.
- Multiple Resource - Recreation - Low Density (3 acres):** Lands with minimal development or infrastructure that support passive public recreational use (e.g. primitive camping, fishing, hunting, trails, wildlife viewing, etc.).
- Multiple Resource - Inactive or Future Recreation (9 acres):** Areas with site characteristics compatible with potential future recreational development or recreation areas that are closed. Until there is an opportunity to develop or reopen these area, they will be managed for multiple resources.
- Multiple Resource - Wildlife Management (352 acres):** Lands designated for stewardship of fish and wildlife resources.
- Multiple Resource - Vegetative Managment (48 acres):** Lands designated for stewardship of forest, prairie, and other native vegetative cover.
- Project Operations (42 acres):** This category includes those lands required for the dam, spillway, switchyard, levees, dikes, offices, maintenance facilities, and other areas that are used solely for the operation of the project.
- Water Surface - Open Recreation (132 acres):** Those waters available for year round or seasonal water-based recreational use.
- Water Surface - Restricted (3 acres):** Water areas restricted for project operations, safety, and security purposes.
- Water Surface - Fish and Wilflife Sanctuary (4 acres):** Annual or seasonal restrictions on areas to protect fish and wildlife species during periods of migration, resting, feeding, nesting, and/or spawning.
- Environmentally Sensitive Areas Overlay (80 acres):** Areas where scientific, ecological, cultural or aesthetic features have been identified.

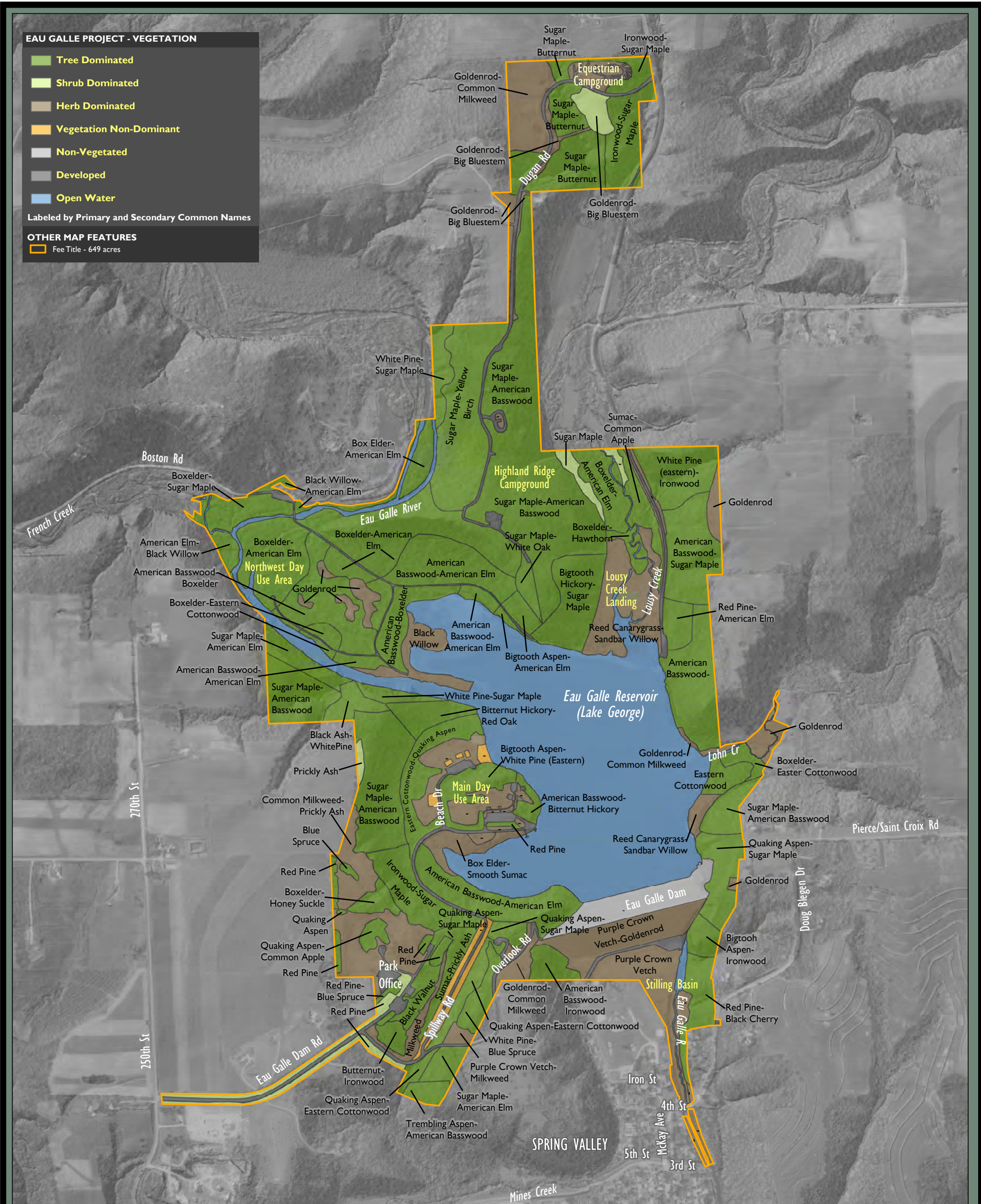


OTHER MAP FEATURES	
	Boat Ramp
	Camp Host Site
	Camping
	Dam
	Equestrian
	Fishing
	Information
	Overlook
	Flowage Easement - 514 Acres (ac.)
	Fee Title - 649 ac.
	Equestrian Trails
	Hiking Trails
	Pipeline
	Powerlines
	Park Office
	Parking
	Picnic Area
	Playground
	Restroom
	Self Pay Station
	Shelter
	Swimming



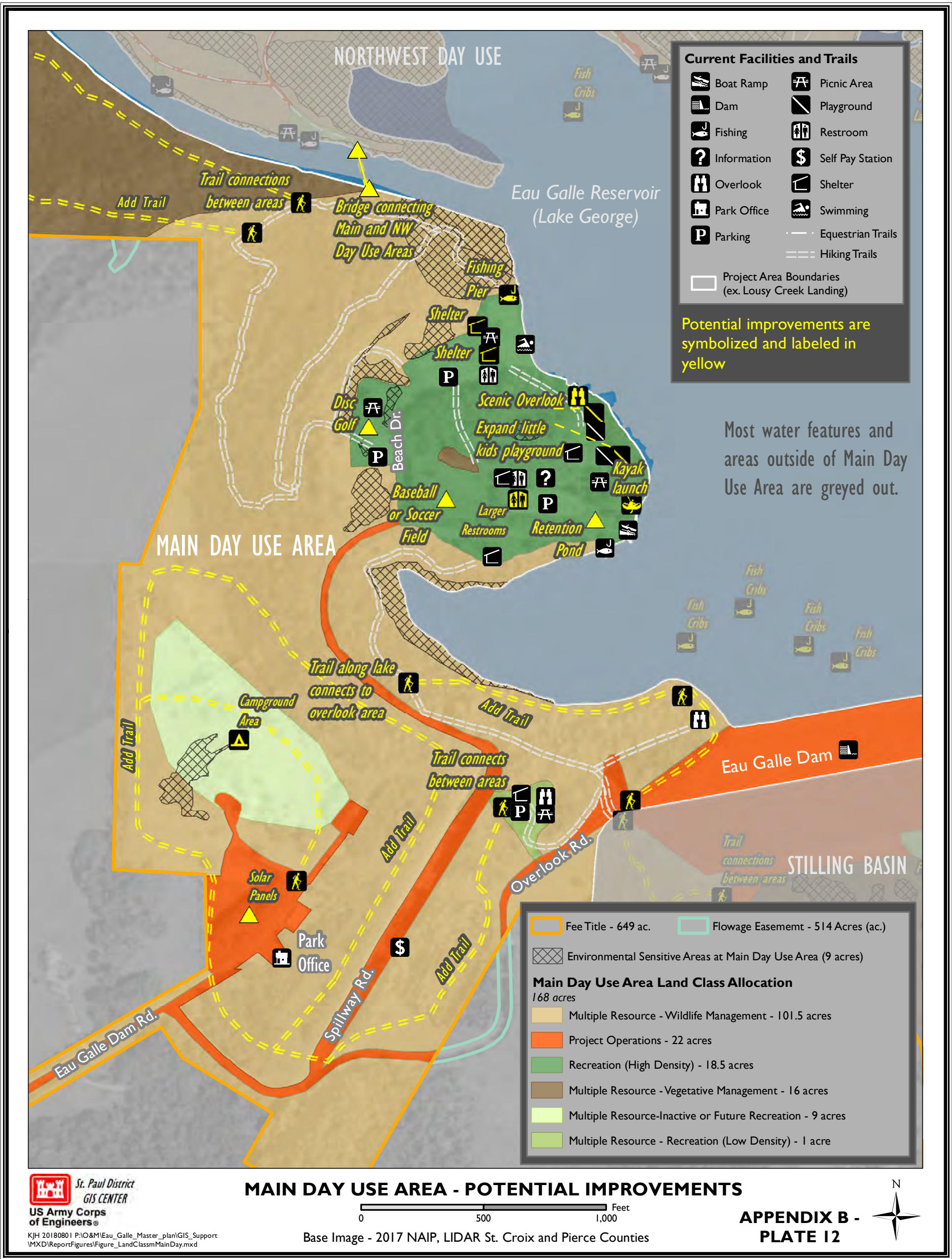
The represented mapped acreages on figures and plates are calculated from GIS polygon data. GIS acres are not the deeded legal acreage. For information on the deeded legal acreage of the project see Table 2 and Chapter 2.16 in the main report.





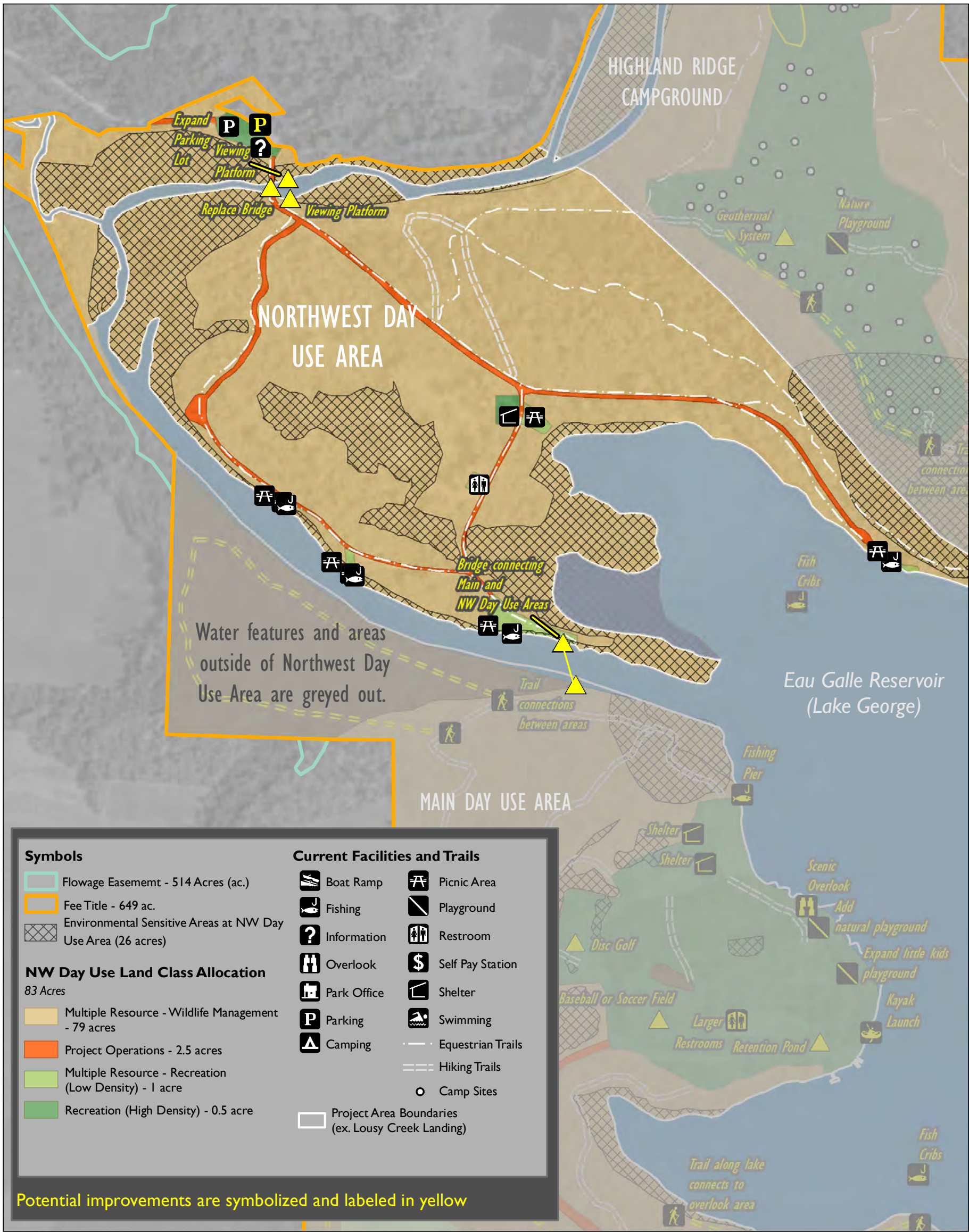
The represented mapped acreages on figures and plates are calculated from GIS polygon data. GIS acres are not the deeded legal acreage. For information on the deeded legal acreage of the project see Table 2 and Chapter 2.16 in the main report.





The represented mapped acreages on figures and plates are calculated from GIS polygon data. GIS acres are not the deeded legal acreage. For information on the deeded legal acreage of the project see Table 2 and Chapter 2.16 in the main report.





St. Paul District  
GIS CENTER  
US Army Corps  
of Engineers®

KJH 20180801 P:\O&M\Eau\_Galle\_Master\_plan\GIS\_Support  
VMXD\ReportFigures\Figure\_LandClassNWDayUse.mxd

## NORTHWEST DAY USE AREA - POTENTIAL IMPROVEMENTS

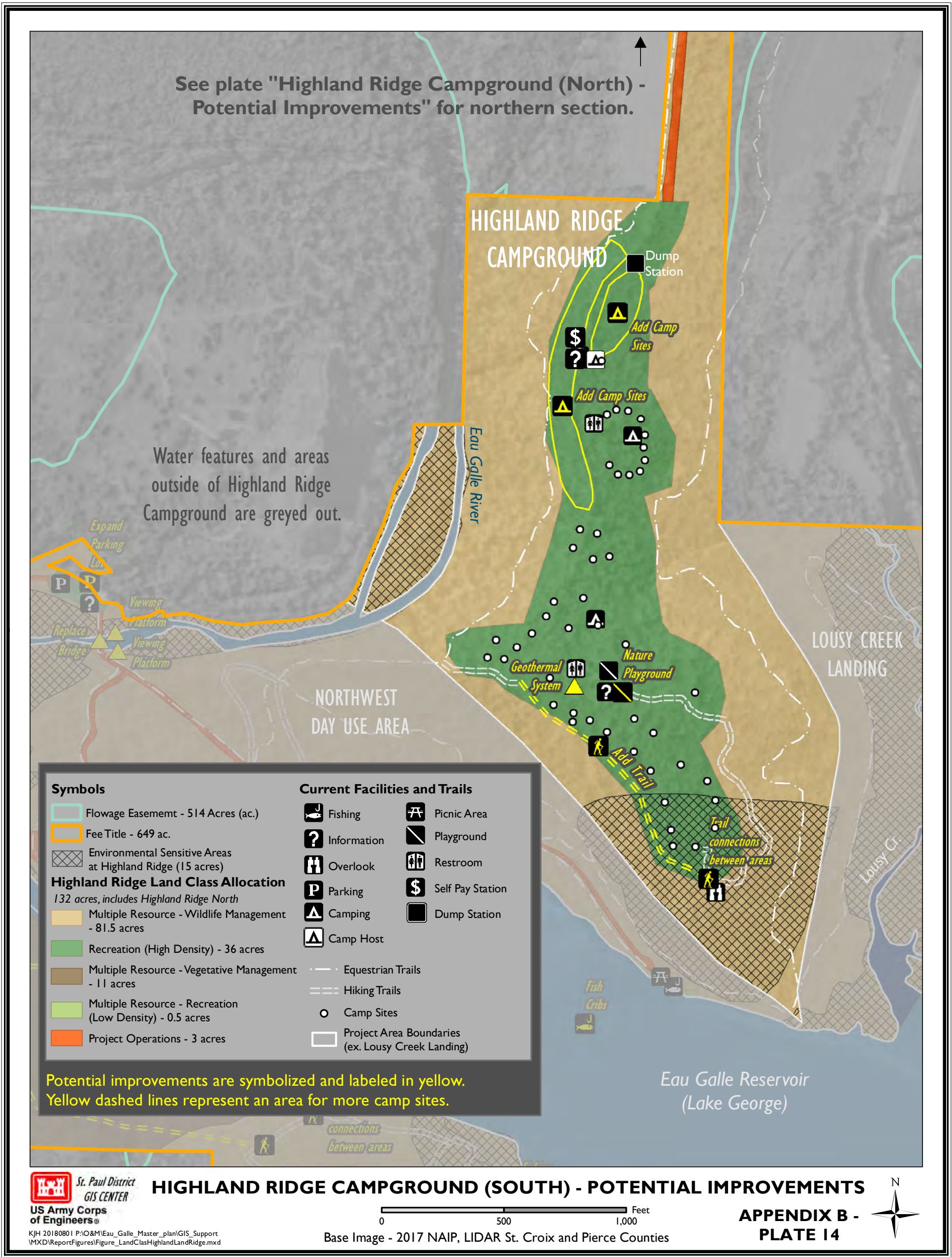
0 500 1,000 Feet  
Base Image - 2017 NAIP, LIDAR St. Croix and Pierce Counties

APPENDIX B -  
PLATE 13



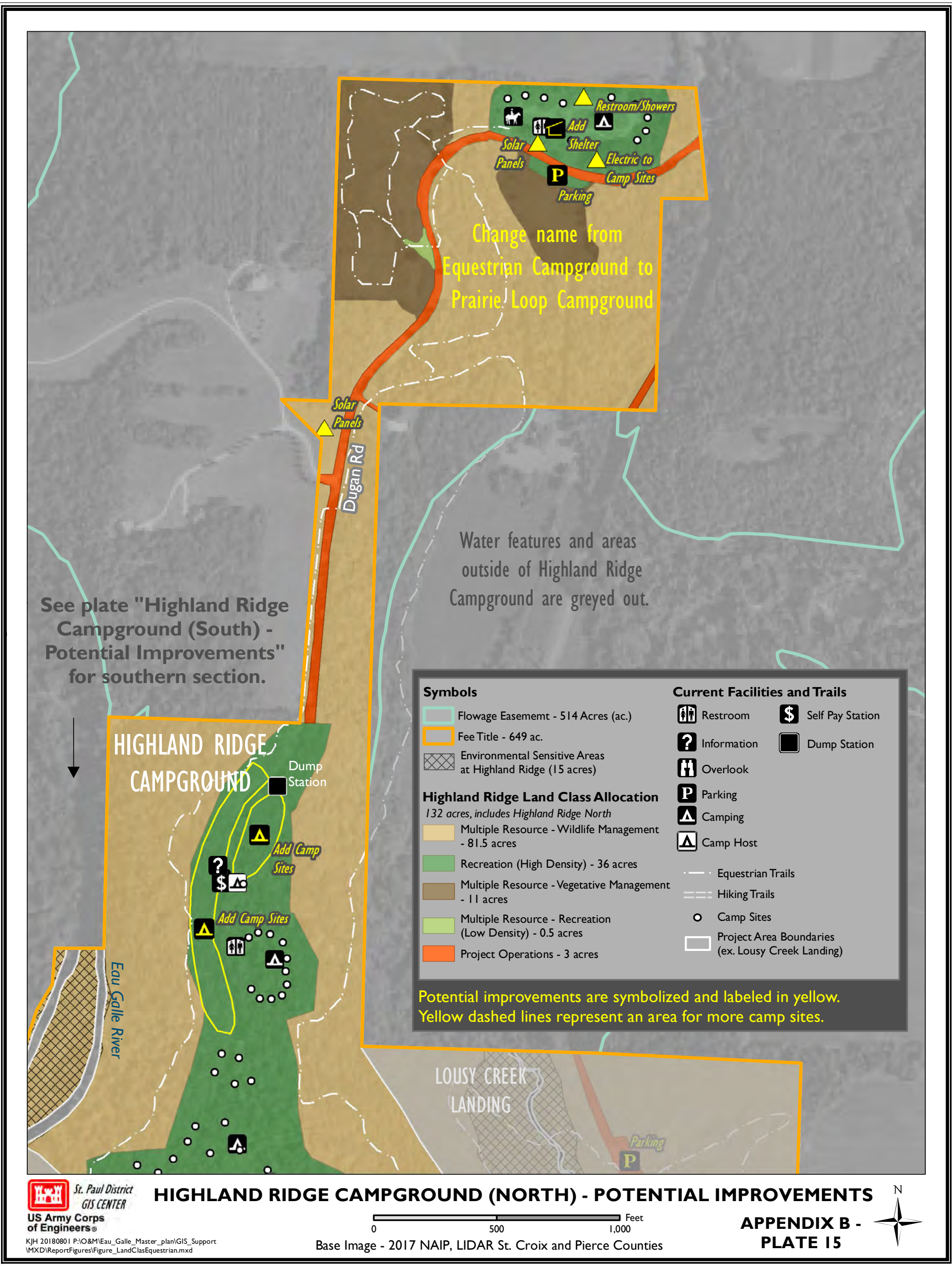
The represented mapped acreages on figures and plates are calculated from GIS polygon data. GIS acres are not the deeded legal acreage. For information on the deeded legal acreage of the project see Table 2 and Chapter 2.16 in the main report.





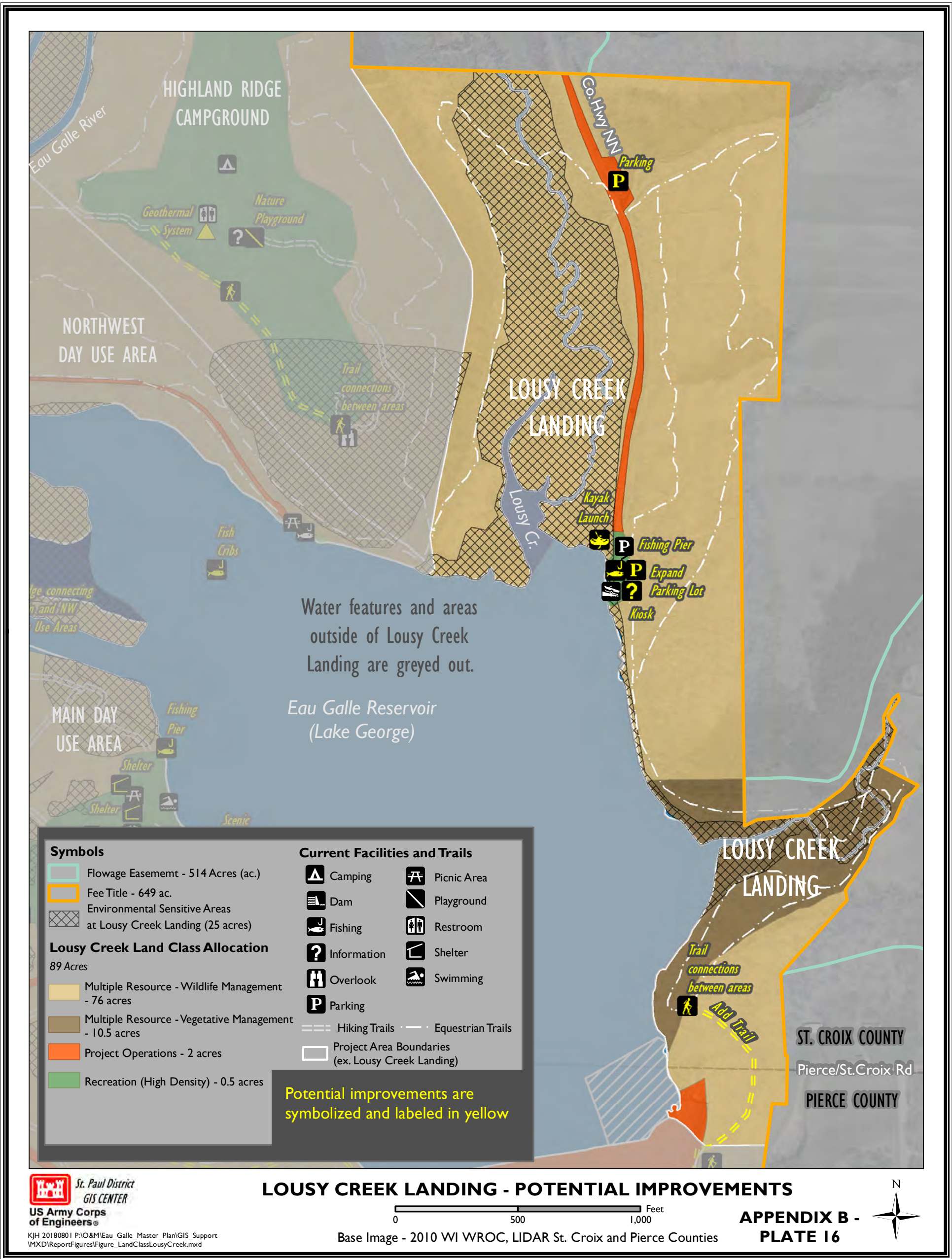
The represented mapped acreages on figures and plates are calculated from GIS polygon data. GIS acres are not the deeded legal acreage. For information on the deeded legal acreage of the project see Table 2 and Chapter 2.16 in the main report.





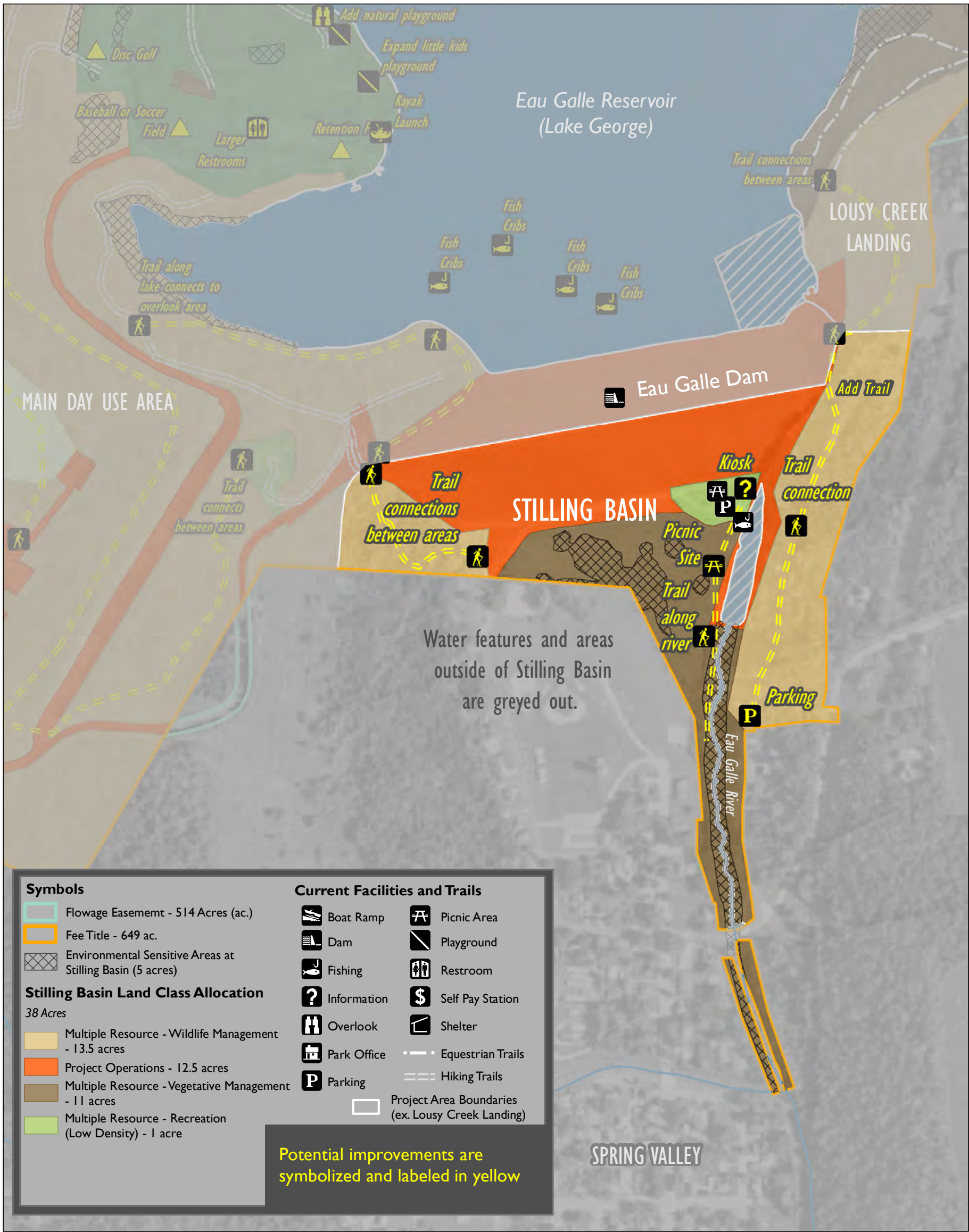
The represented mapped acreages on figures and plates are calculated from GIS polygon data. GIS acres are not the deeded legal acreage. For information on the deeded legal acreage of the project see Table 2 and Chapter 2.16 in the main report.





The represented mapped acreages on figures and plates are calculated from GIS polygon data. GIS acres are not the deeded legal acreage. For information on the deeded legal acreage of the project see Table 2 and Chapter 2.16 in the main report.





## STILLING BASIN - POTENTIAL IMPROVEMENTS

0 500 1,000 Feet  
Base Image - 2010 WI WROC, LIDAR St. Croix and Pierce Counties

APPENDIX B -  
PLATE 17



The represented mapped acreages on figures and plates are calculated from GIS polygon data. GIS acres are not the deeded legal acreage. For information on the deeded legal acreage of the project see Table 2 and Chapter 2.16 in the main report.



The represented mapped acreages on figures and plates are calculated from GIS polygon data. GIS acres are not the deeded legal acreage. For information on the deeded legal acreage of the project see Table 2 and Chapter 2.16 in the main report.

