

Legend

- ⋯ Campground Loop- 2.67MI
- ⋯ NN Loop- 1.08MI
- ⋯ Northwest Day Use Loop- 1.25MI
- ⋯ Lohn Creek Loop- 0.87MI
- ⋯ Prairie Loop- 0.56MI
- ⋯ Horse Camp Trail- 0.31MI
- ⋯ Lousy Creek Trail- 0.55MI
- - - Foot Trails- Horses not permitted



Boston Road trailer parking



County NN trailer parking



Trail closure points



Trail section on private property
Please stay on trail



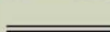
Equestrian Campground



Park boundary (approximate)



20' Contours



Public roads



Park roads (Horses not permitted
on paved roads)



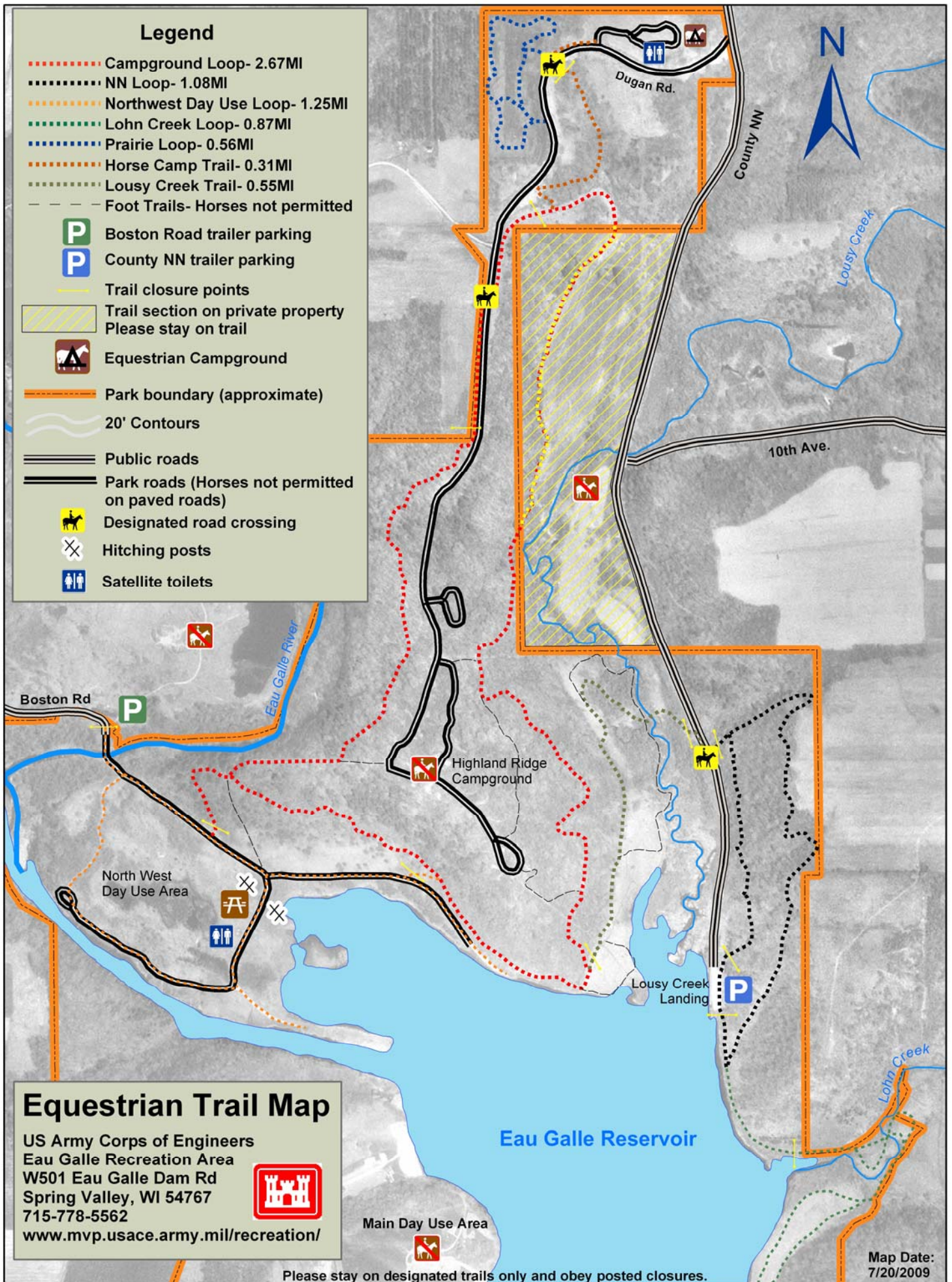
Designated road crossing



Hitching posts



Satellite toilets



Equestrian Trail Map

US Army Corps of Engineers
Eau Galle Recreation Area
W501 Eau Galle Dam Rd
Spring Valley, WI 54767
715-778-5562
www.mvp.usace.army.mil/recreation/



Main Day Use Area



Please stay on designated trails only and obey posted closures.

Map Date:
7/20/2009