

# MMM 2023 INDUSTRY TOPICS LOCKS AND DAMS

08 Feb 2023  
Sam Mathiowetz  
Lockmaster, Lock and Dam 10



US Army Corps  
of Engineers®



**BUILDING STRONG®**



# TOW CONFIGURAITONS



70x745 - 2 Lockages



Fig. 1

Same Barges- Different Configuration  
105x545 - 1 Lockage

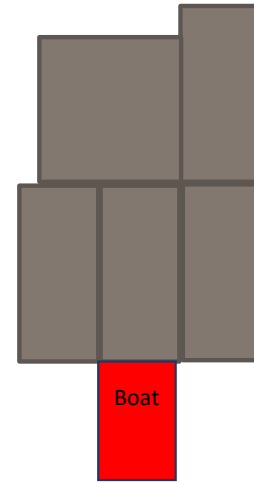


Fig. 2



**BUILDING STRONG®**



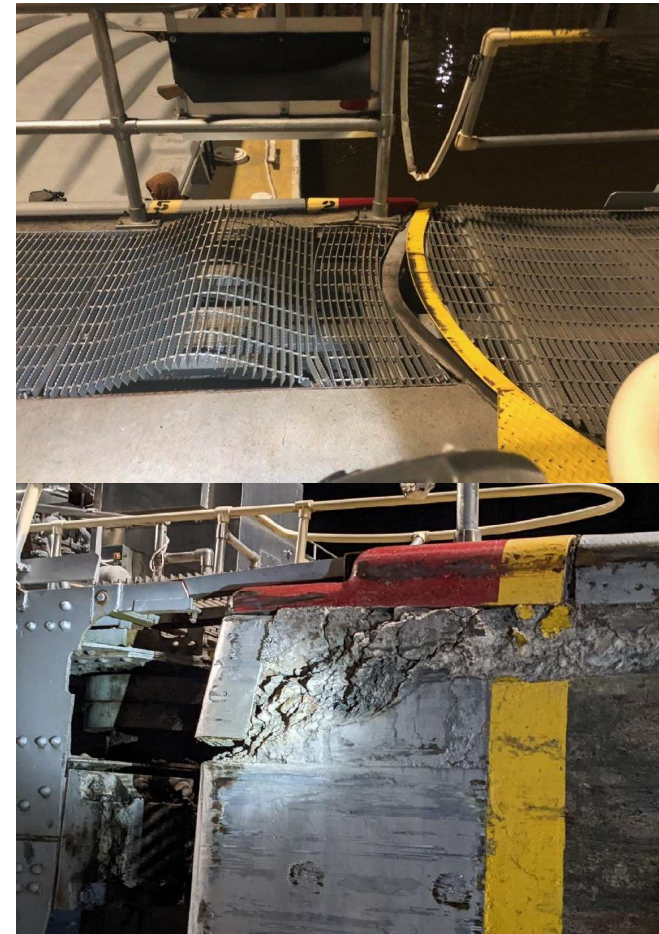
# 2022 ALLISIONS WITH LOCK STRUCTURES



- 7 Total, 7 Downbound
  - Spring: 4 (Apr-Jun)
  - Summer: 1 (Jul-Aug)
  - Fall: 2 (Sep-Nov)
- Majority were timber damage.
- Most severe were LD4 & LD9
  - -Bridge/Handrailing & gate/concrete
- Historical:
  - 2021 – 16, 14 Down / 5 Upbound
  - 2020 – 20, 16 Down / 4 Upbound
  - 2019 – 16, 11 Down / 5 Upbound
  - 2018 – 4, 2 Down / 2 Upbound



Dam service bridge (LD4)



Top to Bottom: MG #2 walkway & quoin (LD9)



**BUILDING STRONG®**  
*and Taking Care of People!*



# MITER GATES AND ANCHORAGES TENTATIVE SCHEDULE

<u>Non-NAV Season</u>	<u>Anchorage Replacement</u>	<u>Navigation Season</u>	<u>Mite Gate Install</u>
		2022	LDs 5A & 8
2022-2023	LDs 3 & 4	2023	MVD assets supporting IWW, no MVP gate install.
2023-2024	Dewater LD 2	2024	LD 10
2024-2025	LDs 7 & 9	2025	LDs 6 & 7
	Dewater box LD 9		
2025-2026	LD 5	2026	LD 9
		2027+	LDs 3, 4, & 5

\*MG exchange: 4, 12-hour closures needed per lock + 2 contingencies 12-hour closure dates.  
Closures typically scheduled for Tue and Thu each week.



**BUILDING STRONG<sup>®</sup>**  
*and Taking Care of People!*



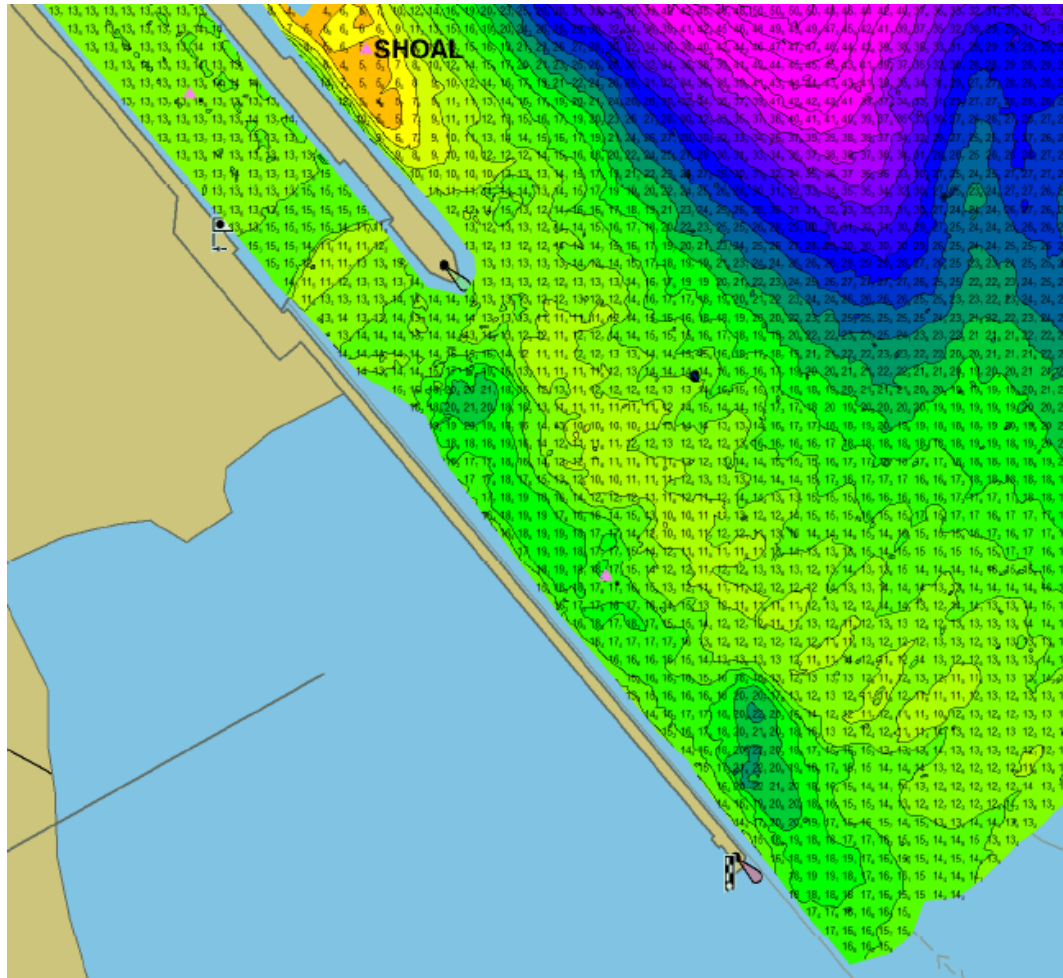
# RESTRICTED AREAS & SIGNAGE



**BUILDING STRONG<sup>®</sup>**  
*and Taking Care of People!*



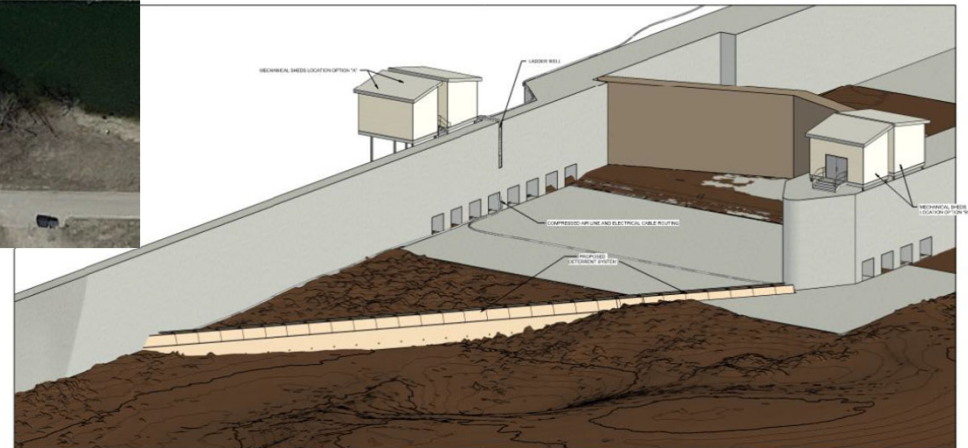
# LOWER APPROACH TO LOCK 7



**BUILDING STRONG<sup>®</sup>**  
*and Taking Care of People!*



# INVASIVE SPECIES DETERRENT AT LD 5



\*Proposed deterrent alignment and equipment building isometric



**BUILDING STRONG<sup>®</sup>**  
*and Taking Care of People!*



# INCREASE IN COMM. PASSENGER TRAFFIC / PRIORITY OF LOCKAGE



VESSEL NAME	OWNER	TYPE	GUEST CAPACITY	# TRIPS	NOTES
AMERICA SPLENDOR	American Cruise Lines	Paddlewheeler	180	2	
AMERICAN MELODY	American Cruise Lines	Riverboat	180	9	
AMERICAN SYMPHONY	American Cruise Lines	Riverboat	180	2	
AMERICAN COUNTESS	American Queen Voyages	Paddlewheeler	245	3	
AMERICAN DUCHESS	American Queen Voyages	Paddlewheeler	166	3	
AMERICAN QUEEN	American Queen Voyages	Paddlewheeler	417	3	
VIKING MISSISSIPPI	Viking Cruise Lines	Riverboat	386	2	
<b>LOCAL CRUISES:</b>					
TWILIGHT	Riverboat Twilight	Riverboat		1	1-day cruise from Dubuque to Guttenberg
CELEBRATION BELLE	Celebration River Cruises	Paddlewheeler	750	1	1-day cruise from Dubuque to Prairie du Chien
LA CROSSE QUEEN	La Crosse Queen	Paddlewheeler	149	20	1-day cruise from La Crosse thru Lock 7
ANSON NORTHRUP	Padelford Riverboats	Paddlewheeler	250	9	1-day cruise, Minneapolis/St. Paul
JONATHAN PADELDFORD	Padelford Riverboats	Paddlewheeler	140	1	1-day cruise, Minneapolis/St. Paul
MAGNOLIA BLOSSOM	Magnolia Blossom Cruises	Paddlewheeler	110	4	1-day cruise, Minneapolis/St. Paul
MINNEAPOLIS QUEEN	Paradise Charter Cruises	Paddlewheeler	125	9	1-day cruise, Minneapolis/St. Paul

\*2022 commercial passenger vessels activity in MVP



**BUILDING STRONG<sup>®</sup>**  
*and Taking Care of People!*

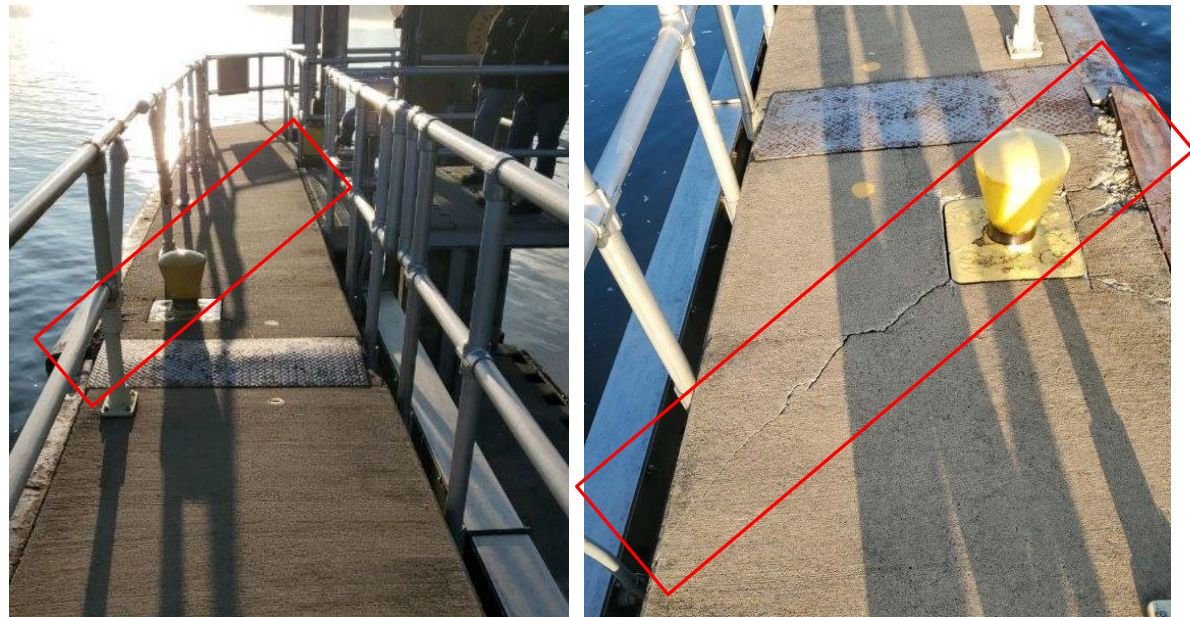




# NAV NOTICE 1 / NTNIS



- a. NAV Notice 1.
- b. Current NTNIs - Questions?
- c. Lower GW check post at LD5' – ENG is recommending we don't use it. Dialogue?



*Left to Right: Check post at end of Lower Guide wall (LD5); Transverse crack in monolith bisecting last check post, including damage to adjacent wall armor (LD5).*



**BUILDING STRONG<sup>®</sup>**  
*and Taking Care of People!*



# QUESTIONS ?



**BUILDING STRONG<sup>®</sup>**  
*and Taking Care of People!*