

LOWER APPR. TO LD 7 & UPPER APPR. TO LD 2

Presentation for

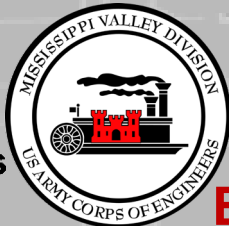
MISSISSIPPI MANAGERS MEETING

By Dan Cottrell

3 February 2021



US Army Corps
of Engineers®



BUILDING STRONG®





LOWER APPROACH TO LD 7 BACKGROUND

2



August 8, 2020: Helper boat with no barges – hit something below LD 7 on the LDB suspected maybe a sunken buoy. Drafting 6.3 feet.

September 6, 2020: Helper boat with no barges grounded below LD 7 on the LDB drafting 8.0 feet.

September 14, 2020: Surveyed – shows shoaling below the bull nose on the left descending side. Records show that hasn't been dredged since 1973.

October 1, 2020: Pole soundings completed to determine sand or rock, estimated that upper 50 feet of the cut is rock otherwise sand.

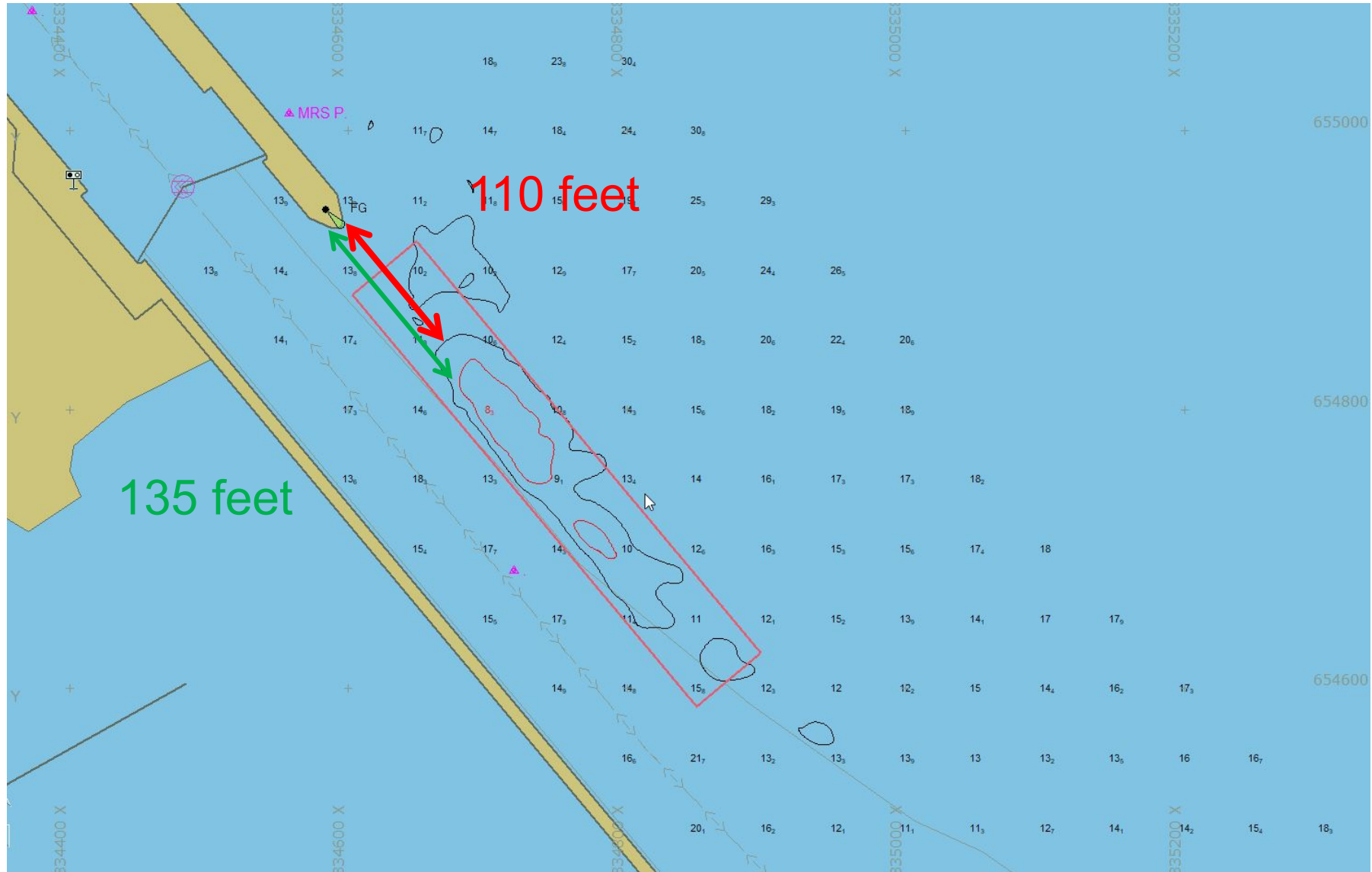
October 13, 2020: Line boat with 3 loads, grounds heading upbound. Drafting 9 feet.



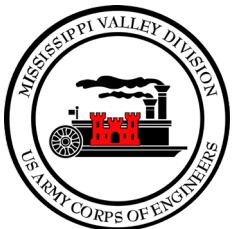
BUILDING STRONG®



SOUNDINGS



BUILDING STRONG®





How do we move forward?

- 1) Monitor for a season – it may have changed.
- 2) Do environmental and plan to dredge.
- 3) Do more analysis to see what the material is.
- 4) Other ideas?

Contact info:

Dan Cottrell

E-mail: daniel.j.cottrell@usace.army.mil

Phone: 651-290-5155



BUILDING STRONG®



UPPER APPROACH TO LD 2 BACKGROUND

5



Mentioned at previous Mississippi Managers Meetings that the cross channel flows above LD 2 have increased.

- 1) Expected that loss of islands in that reach have impacted flows.
- 2) It was looked at and found that mussels were relocated in the area in the late 90's
- 3) Likely that the mussels here contain some endangered species and not likely be able to restore an island.

Path forward

- 1) After the 2018 and 2019 rock construction upstream does it seem better or worse or the same?
- 2) Should we investigate other solutions that don't include mussel impacts?



BUILDING STRONG®



UPPER APPROACH TO LD 2



BUILDING STRONG®

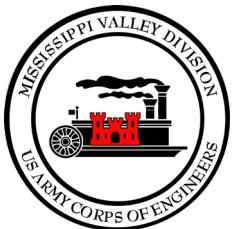


Questions? or to provide **feedback** about either or both of these locations please contact me at:

Dan Cottrell

E-mail: daniel.j.cottrell@usace.army.mil

Phone: 651-290-5155



BUILDING STRONG®