

Plant & Equipment Improvements for Navigation *Strategic Priorities PSB*

The Physical Support Branch has been maintaining the 9-foot navigation project by deploying mechanical and hydraulic dredging, floating plant, and other resources to various locations ranging from St. Louis to St. Paul.

This is an overview of additions and betterments to our dredging fleet and other assets in support of the 9-foot navigation project.





DREDGE GOETZ TENDER VESSELS

2



- Replace Tender Vessels Fielder & Fluekiger (FY2025)
 - Increased horsepower
 - Improved visibility
 - Improved emission standards
 - More reliable



BUILDING STRONG®
and Taking Care of People!

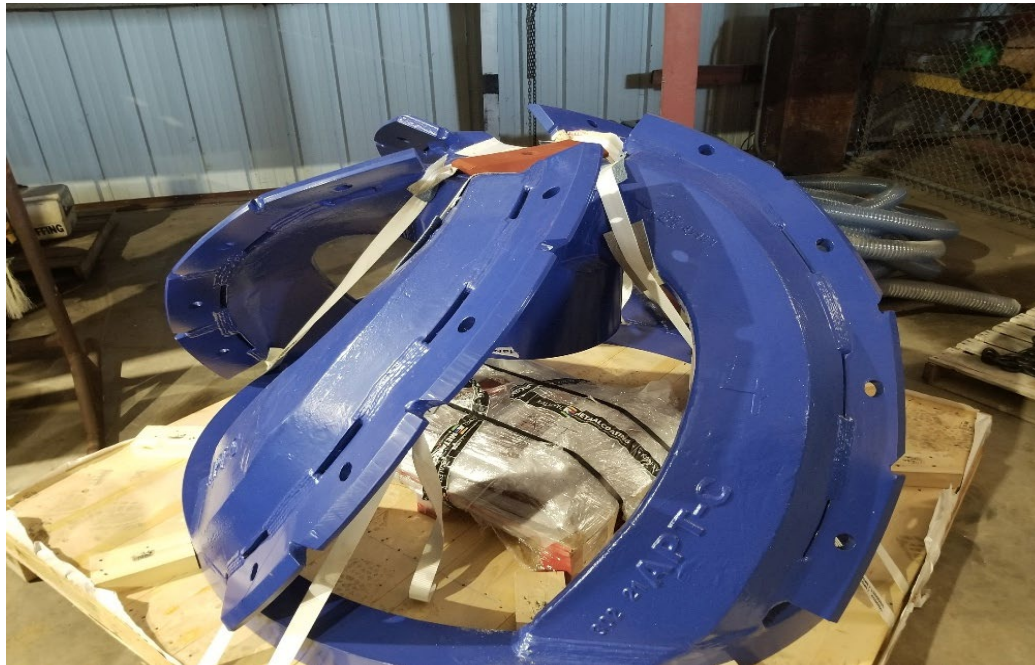


DREDGE GOETZ NEW CUTTERHEAD

3



- New Cutterhead
 - Improved design for digging in sandy material
 - Increased efficiencies
 - Reduced downtime for cleaning the cutterhead of debris
 - Reduced maintenance costs



BUILDING STRONG®
and Taking Care of People!



DREDGE GOETZ END SHACK

- End Shack Cannon Pipe Extension
 - Increase discharge pipe length
 - Improve material placement further up the embankment
 - Reduce material returning to the river channel
 - Improved efficiencies due to less movement of the end barge



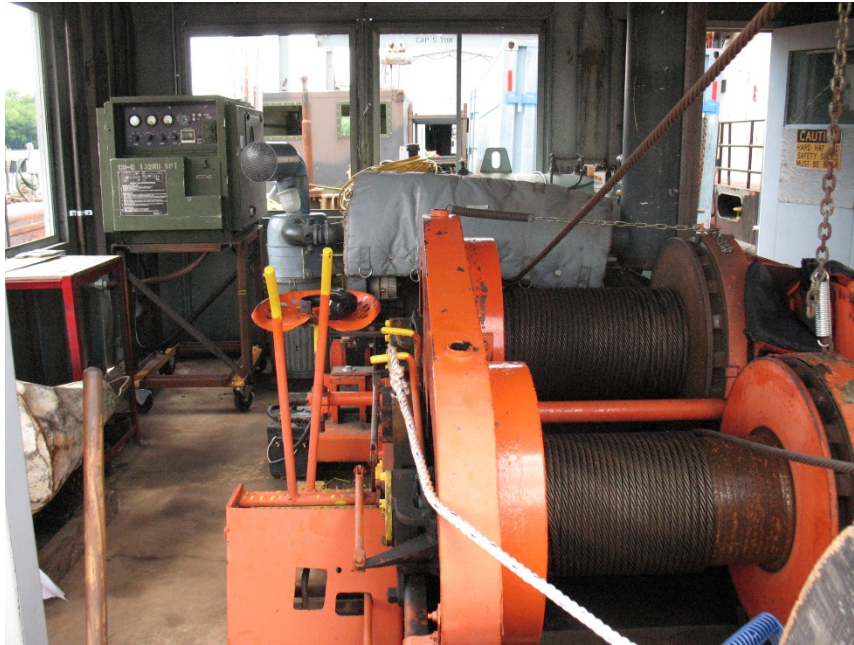


DREDGE GOETZ ANCHOR BARGE

5



- Anchor Barge Replacement (Built 1938)
 - Replace current anchor barge with similar dimensions
 - Replace hoisting system with variable frequency drive (VFD) setup
 - Increase “A” frame height to reduce double picks on anchor (Increased efficiencies)
 - Enhance safety with newer equipment



CORPS OF ENGINEERS

U.S. ARMY

ST. PAUL DISTRICT

Date of Photo: May 1973

Anchor Barge No. 766

Year Built: 1938

Neg. No: C-5217-WCS73

OWNERSHIP: Revolving Fund

Builder: Rock Island
Arsenal



BUILDING STRONG®
and Taking Care of People!



DREDGE GOETZ

6



Additional Dredge Goetz Improvements

- New 35-ton crane
- Replacing outdated variable frequency drives (VFD) on the dredge Goetz
- 2022 Overhaul the Caterpillar 3516 primary generators on the dredge Goetz
- 2022 Programmable logic controller (PLC) replacement on the dredge Goetz
- Exploring pipeline quick connections – improved efficiencies

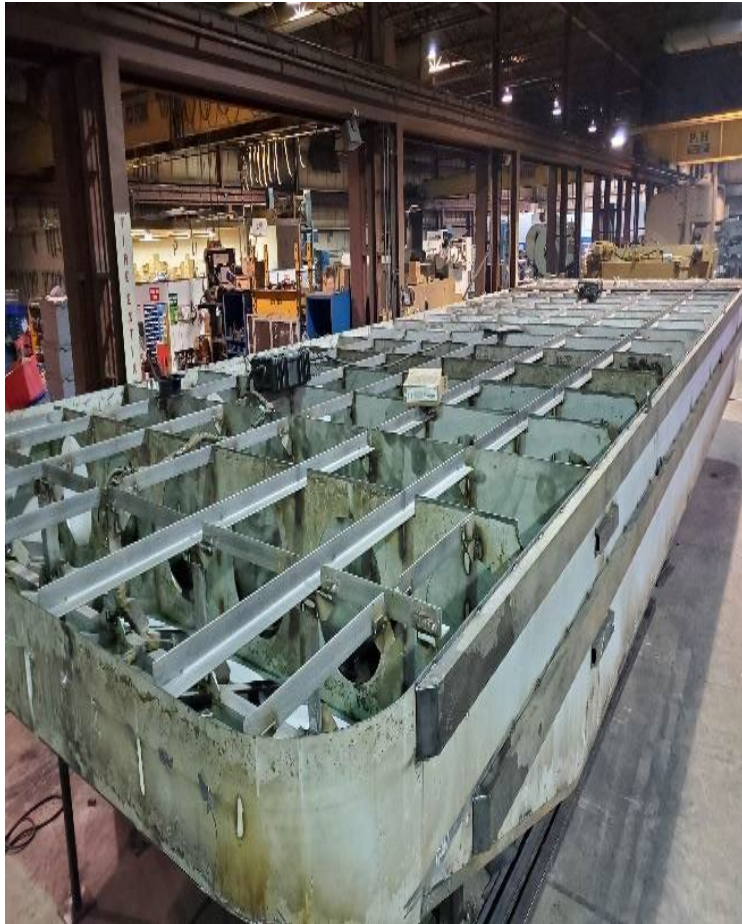


BUILDING STRONG®
and Taking Care of People!





MAINTENANCE & REPAIR HANDY FLAT BARGES



- New barge dimensions 16'x50'
- 2 Material, 1 Spud, and 1 Flat Deck
- Used for backwater projects and lock maintenance



BUILDING STRONG®
and Taking Care of People!

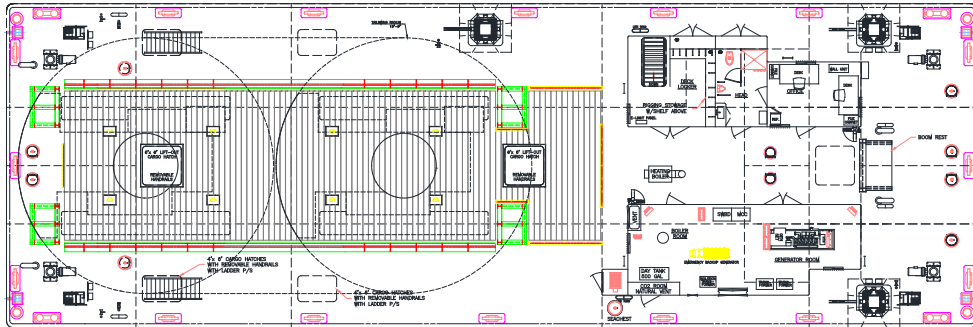


MAINTENANCE & REPAIR CRANE BARGE

8



- Crane Barge Replacement
 - Current crane barge has been in service for 81 yrs.
 - New barge dimensions 50'x150'
 - Provide greater lift capacity
 - Improved safety



BUILDING STRONG®
and Taking Care of People!



MAINTENANCE & REPAIR MATERIAL BARGES

9



- Two New material barges
 - Increased cubic yard capacity
 - Two additional material barges will be added to the mechanical fleet in 2024



BUILDING STRONG®
and Taking Care of People!

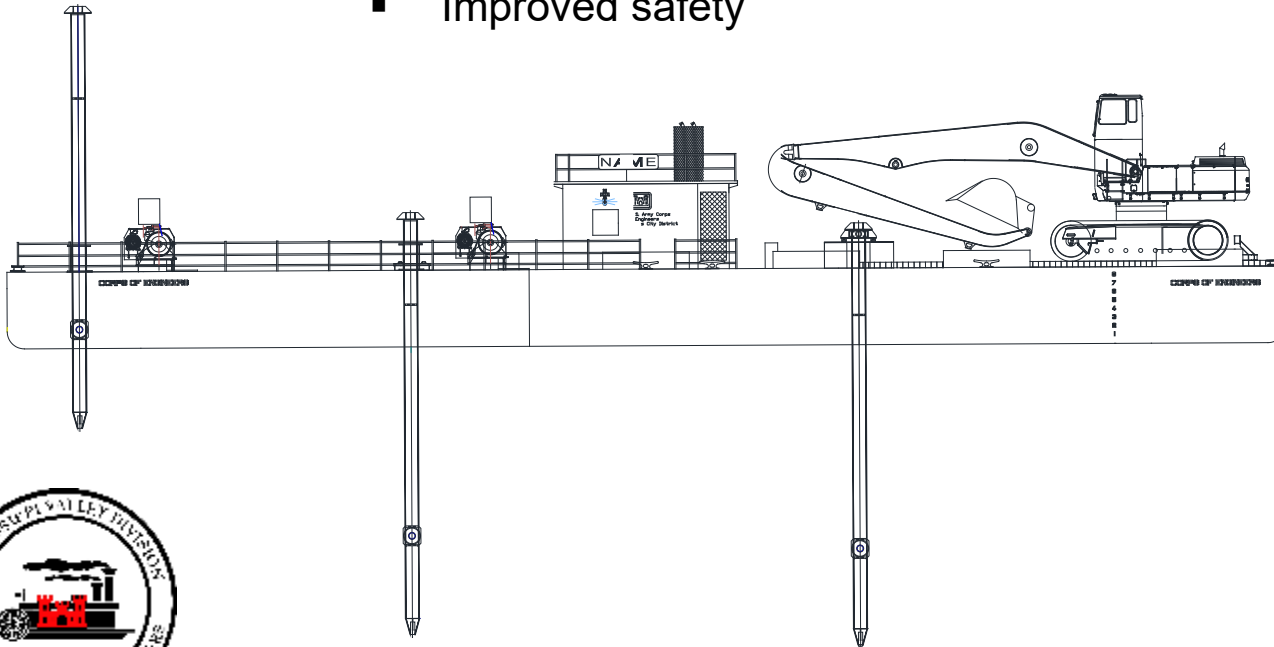


MAINTENANCE & REPAIR MECHANICAL DREDGING BARGE & EQUIPMENT

10



- New Mechanical Dredging Barge
 - New barge dimensions 40'x150'
 - 2 New large excavator
 - 4 new material barges
 - Improve dredging efficiencies
 - Multiple use (crane barge)
 - Improved safety



BUILDING STRONG®
and Taking Care of People!

QUESTIONS?

