

ELECTRONIC AIDS TO NAVIGATION - E-ATONS

Dan Cottrell / LCDR Chris Barger
Miss Mgrs Meeting
Feb 2020



US Army Corps
of Engineers®



BUILDING STRONG®
and Taking Care of People!



E-ATONS USE IN ST. PAUL DISTRICT 2019



Pool	Location	Date Transmitted	Date modified	# of E-AtoNs
2	Boulanger Bend Lower Light	21-May *	NA	7
4	Beef Slough	28-May	25-Jun	6
6	Below Winona RR Bridge	3-Jun		8
8	Picayune Island	24-Jun		12
6	LaMoille	24-Jun		2
8	Brownsville	5-Jul		4
10	McMillan Island	5-Jul	30-Aug	13
2	Lower Pool 2	8-Aug		5
3	Diamond Bluff	27-Aug	4-Sep	4
5	Lower Zumbro	3-Sep		3
2	Freeborn - Boulanger Bend LL	15-Oct		8
10	Lower Pool 10	25-Nov		3
				72
	Discontinued all transmissions	16-Dec		
	*Sent to industry as coordinates AIS system was not used			





E-ATONS USE IN ST. PAUL DISTRICT 2019



Benefits:

- Quick to deploy (relative to actual A-toNs)
- Can be very Accurate
- Will not be moved by outside forces
- Easy to adjust or remove

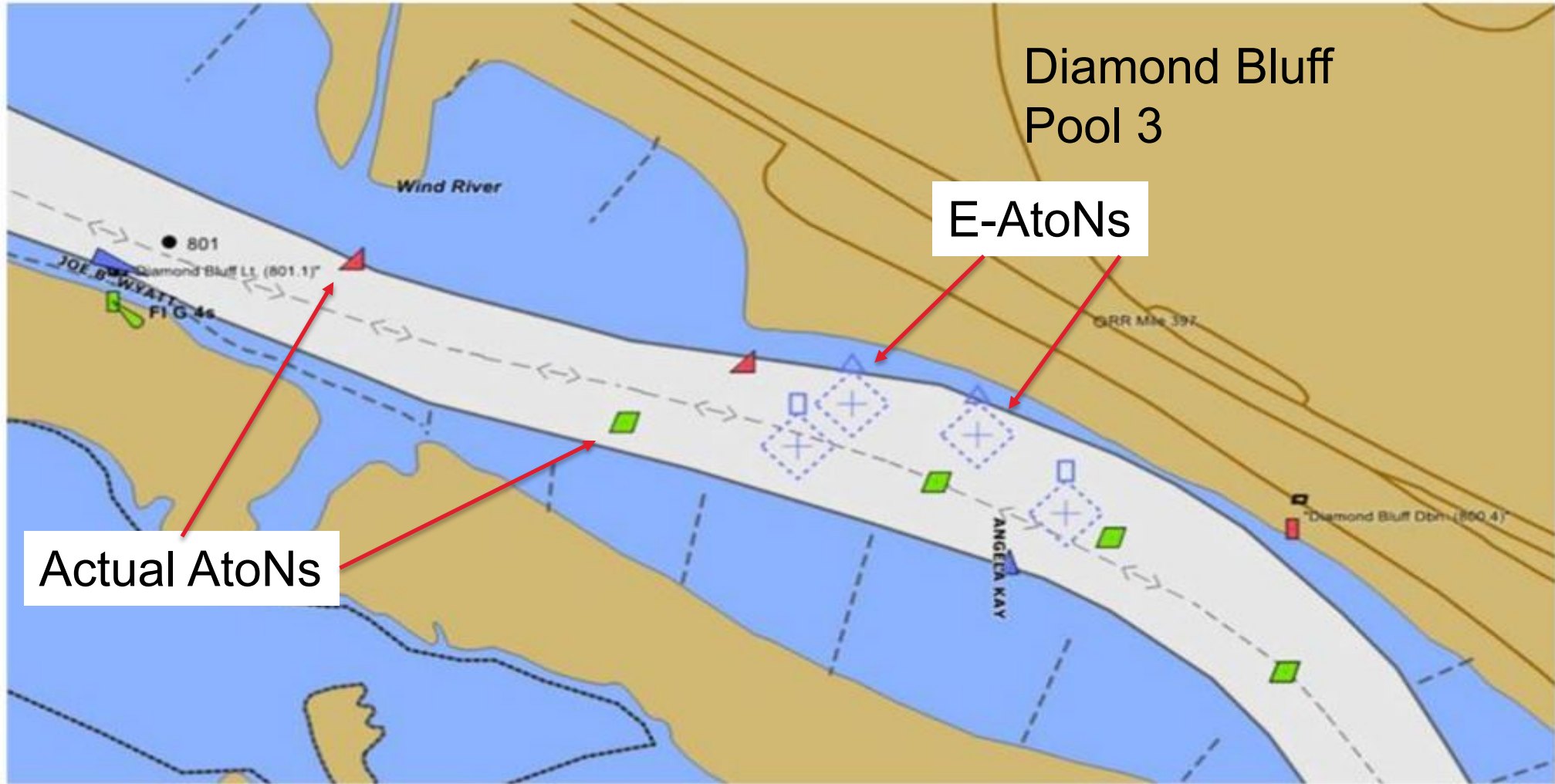
Limitations:

- Symbols are not intuitive and can't be colored
- Difficult to deploy on weekends / nights (hoping to streamline that)
- Still requires on-scene govt asset (USACE Survey, USCG Buoy Tender) for virtual buoys
- AIS system dependent – they are only visible when transmitting – not loaded on the boat's system
- Limited number of signals a single transceiver can transmit
- Tow boat navigation system dependent – need the right software and updates to view?





E-ATONS USE IN ST. PAUL DISTRICT 2019



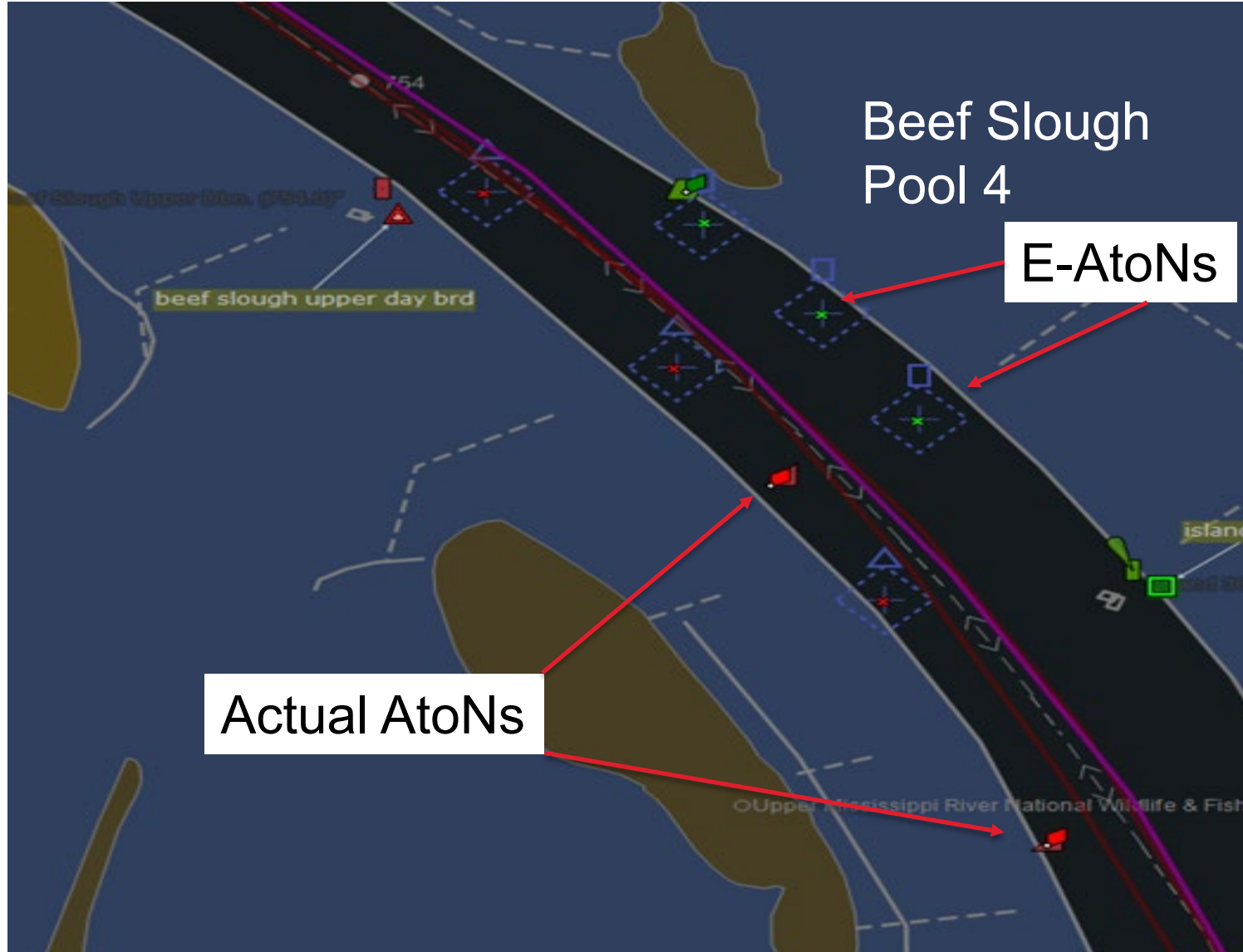


E-ATONS USE IN ST. PAUL DISTRICT 2019



From Bernie's email 11/21/2019:

Confidentiality Notice:
This message may contain confidential or privileged information, or information that is otherwise exempt from disclosure. If you are not the intended recipient, you should promptly delete it and should not disclose, copy or distribute it to others.



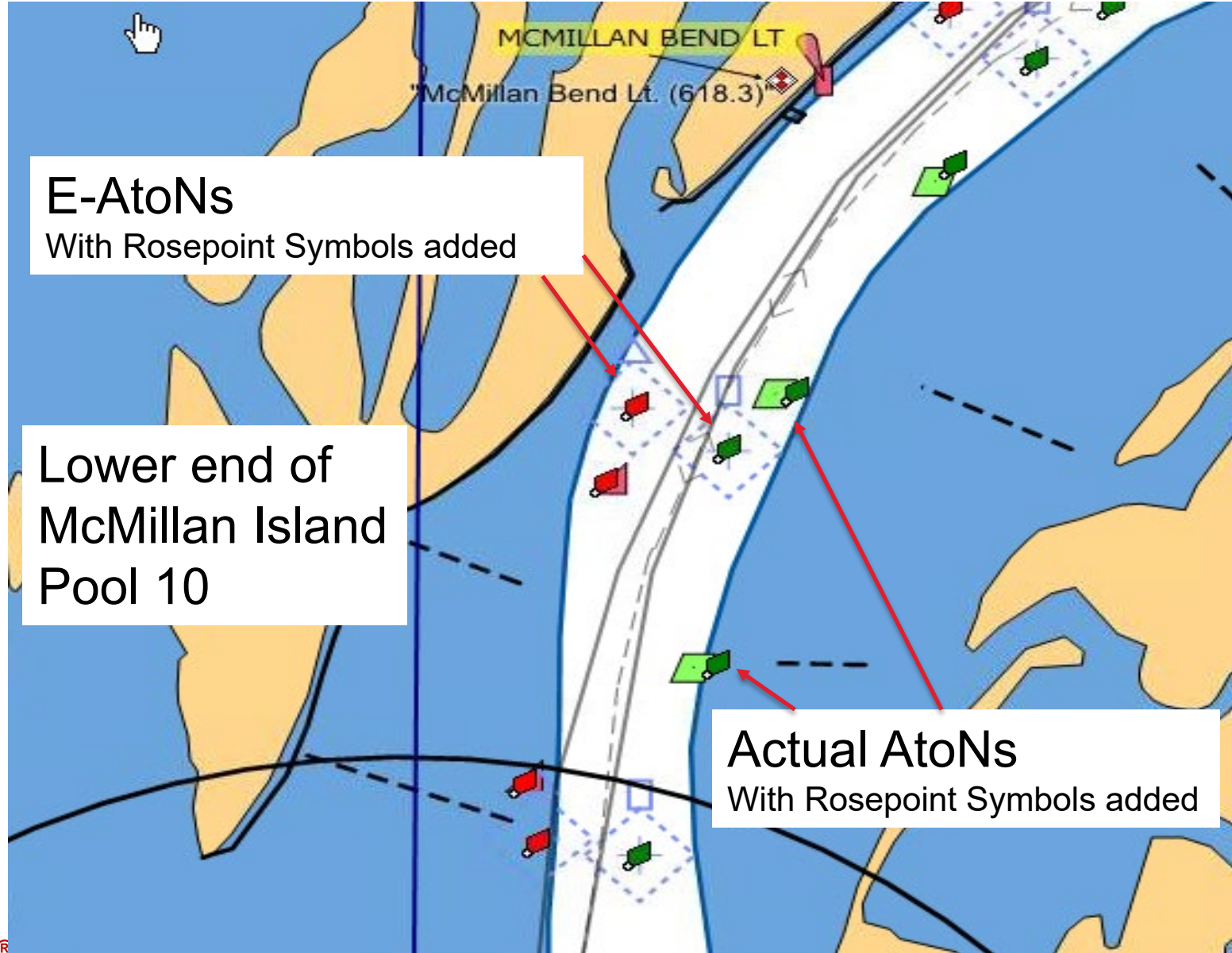


E-ATONS USE IN ST. PAUL DISTRICT 2019



From Bernie's email 11/21/2019:

Confidentiality Notice:
This message may contain confidential or privileged information, or information that is otherwise exempt from disclosure. If you are not the intended recipient, you should promptly delete it and should not disclose, copy or distribute it to others.





OTHER AIS-ATON CAPABILITY



AIS-ATON can also be used to distribute marine information

- Closures/Restrictions
- Cautionary areas
- Shoal warnings
- Infrastructure status
- Weather, etc.

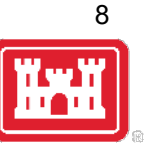
Limitations

- Limited characters of text
- Visibility may be system dependent
- Difficult to deploy on weekends





E-ATONS USE IN ST. PAUL DISTRICT 2019



E-AtoNs were used successfully in the St. Paul District during 2019 due to several District and National Corps folks as well as Contractors that maintain the LOMA / AIS system. In addition there was great collaboration with the USCG Sector Upper leaders especially Chris Barger, Eric Kvistad, Travis Cook on the Wyaconda and all three RIAC Co-Chairs.

Thanks to all of the towing Industry for giving this a try and helping us work through the challenges of rolling this out in a year like 2019.



BUILDING STRONG®
and Taking Care of People!



Questions?

Contact info:

Dan Cottrell

E-mail: daniel.j.cottrell@usace.army.mil

Phone: 651-290-5155

LCDR Chris Barger

E-mail: christian.j.barger@uscg.mil

Phone: 314-269-2560



BUILDING STRONG[®]
and Taking Care of People!