

# LD YEAR IN REVIEW

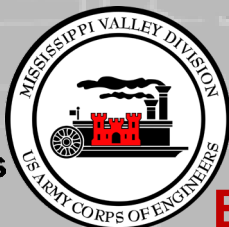
## Presentation for the Mississippi Managers Meeting

Jim Rand, LD Ops Manager

04 Feb 2020



US Army Corps  
of Engineers®



**BUILDING STRONG®**  
*and Taking Care of People!*





US Army Corps  
of Engineers®  
St. Paul District

# 2019 UPPER MISSISSIPPI RIVER NAVIGATION STATISTICS

First



Tow

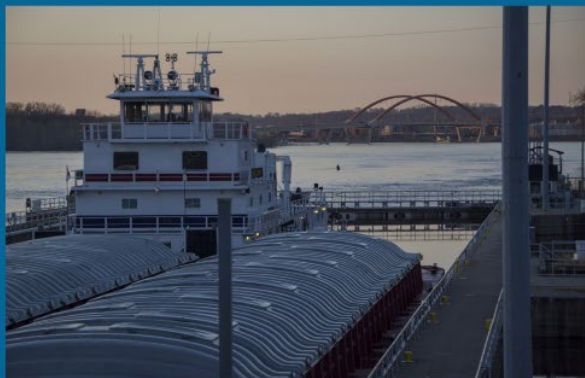
April 24 -  
Motor Vessel  
Aaron F. Barrett

Last



Tow

November 28 -  
Motor Vessel  
Kelly Rae Erickson



## TONNAGE



222  
ton ton ton

Total commodities shipped  
**81,158,220**  
tons

**Annual lockages and tonnage  
were down due to record  
breaking water volumes  
and the resulting  
lock and dam closures**

## Commercial lockages



Total lockages  
15,593

**2,827** lockages  
below the  
10-year average



## Recreational lockages & vessels



Total  
lockages  
12,050



Total Vessels  
26,336



**BUILDING STRONG®**  
*and Taking Care of People!*



# OPEN RIVER DATA 2010 - 2019



| Gates out of the water Apr 1 - Nov 30 (Total of 234 days)      |        |        |        |         |        |        |        |        |        |        |
|--|--------|--------|--------|---------|--------|--------|--------|--------|--------|--------|
| Year   | LD2    | LD3    | LD4    | LD5     | LD5A   | LD6    | LD7    | LD8    | LD9    | LD10   |
|  | 61,000 | 36,000 | 89,000 | 116,000 | 57,000 | 76,000 | 89,000 | 96,000 | 64,000 | 73,000 |
| 2010   | 8      | 65     | 20     | 4       | 63     | 26     | 21     | 23     | 105    | 127    |
| 2011   | 22     | 135    | 38     | 21      | 127    | 73     | 37     | 39     | 138    | 141    |
| 2012   | 4      | 51     | 6      | -       | 43     | 19     | 4      | -      | 46     | 51     |
| 2013   | -      | 79     | 22     | -       | 98     | 54     | 25     | 33     | 109    | 108    |
| 2014   | 15     | 110    | 70     | 27      | 113    | 90     | 70     | 75     | 122    | 129    |
| 2015   | -      | 19     | -      | -       | 15     | -      | -      | -      | 24     | 42     |
| 2016   | -      | 36     | 2      | -       | 77     | 21     | 7      | 8      | 136    | 163    |
| 2017   | -      | 71     | 11     | 3       | 74     | 36     | 22     | 12     | 111    | 126    |
| 2018   | 8      | 109    | 34     | 12      | 101    | 68     | 49     | 46     | 158    | 187    |
| 2019   | 51     | 174    | 104    | 53      | 176    | 143    | 111    | 111    | 204    | 211    |
| Percentage of time in open river conditions during navigation. |        |        |        |         |        |        |        |        |        |        |
| 2019   | 22%    | 74%    | 44%    | 23%     | 75%    | 61%    | 47%    | 47%    | 87%    | 90%    |

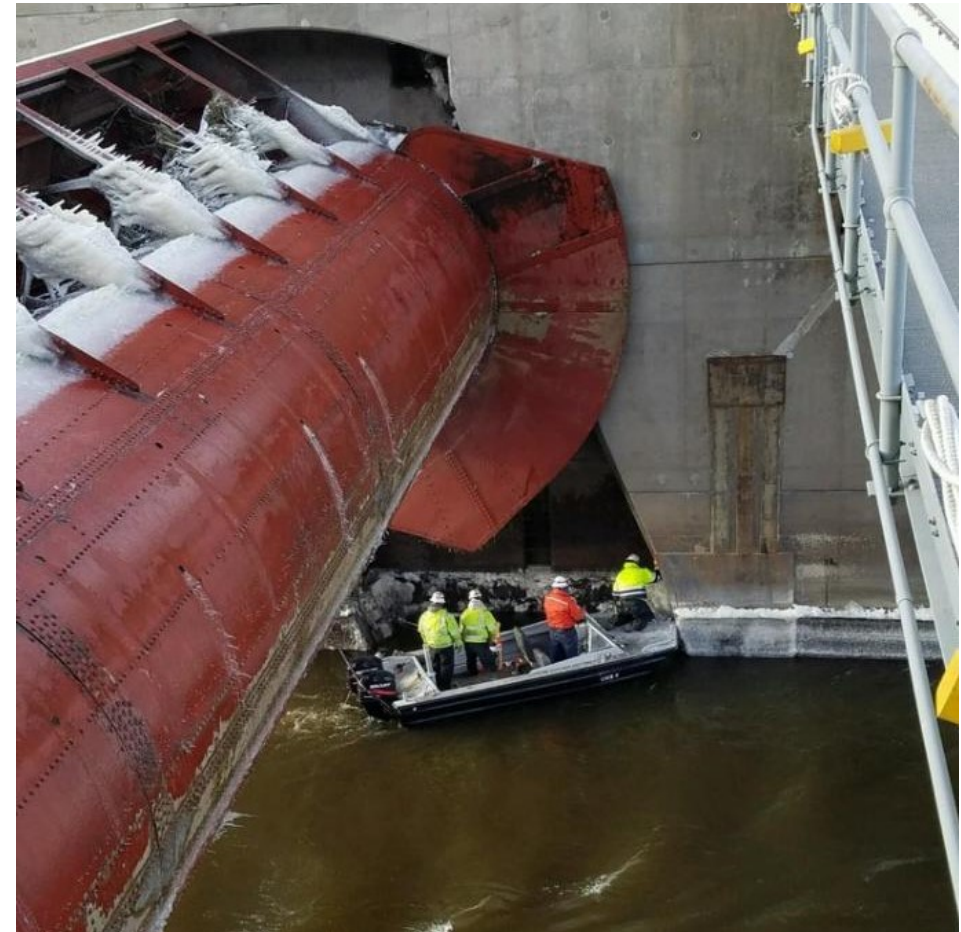






# LATE FALL / WINTER OPEN RIVER CHALLENGES

Ice buildup on roller gate teeth impact movement



**BUILDING STRONG®**  
*and Taking Care of People!*





# CURRENT CONSTRUCTION



LD 6, 8 and 9 tow rail rehab. (contract completion 3/14)

- New concrete - 4" to several feet.
- Continuous traveling kevel rail.
- New traveling kevel bits.
  - longer / heavier / more wheels (16 vs 11).



\*Note – Will re-asses nav-notice 1 requirement for additional mule usage when operational.



LD 9 - UGW



**BUILDING STRONG®**  
*and Taking Care of People!*



# CURRENT CONSTRUCTION

6



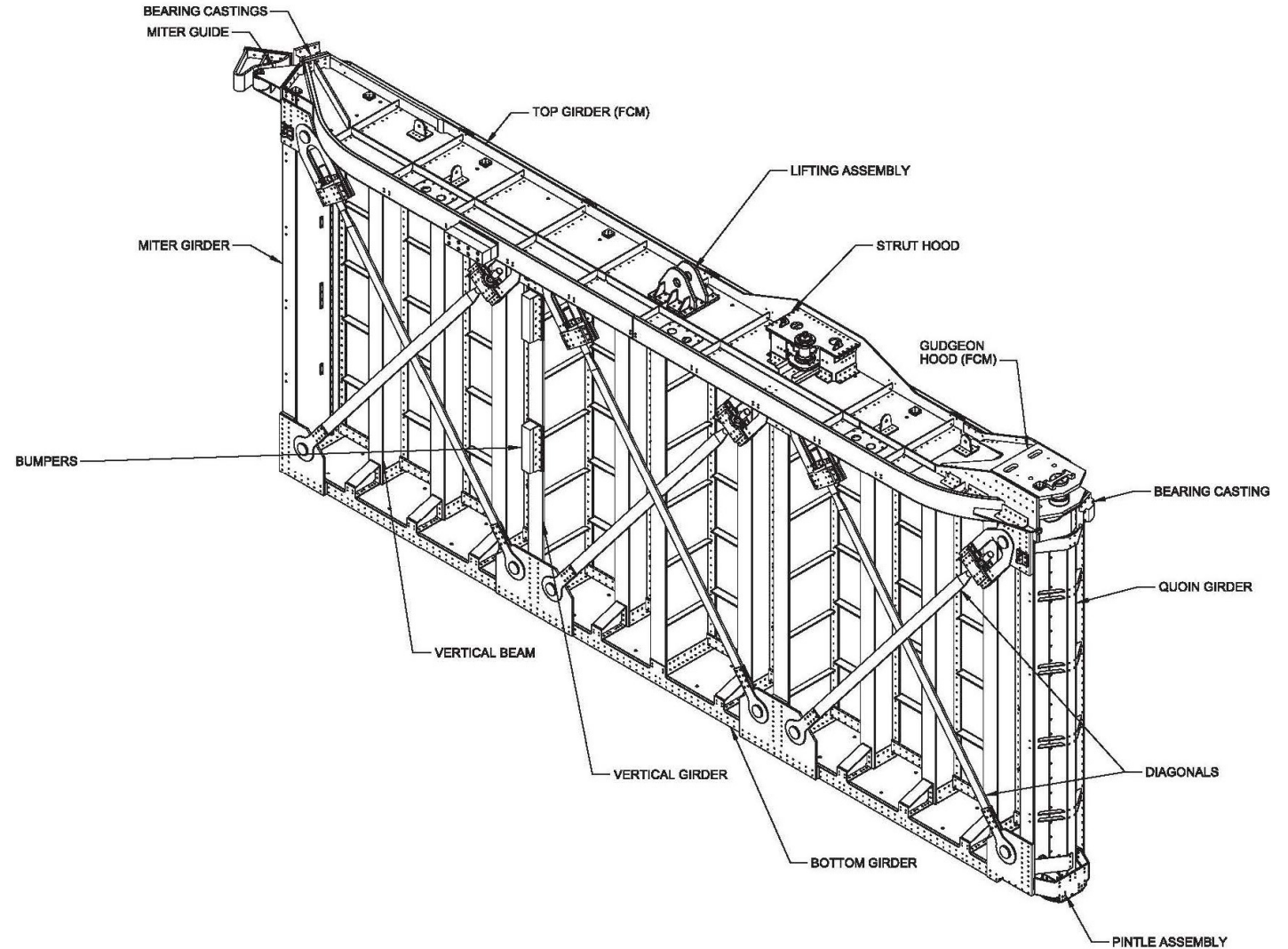
Miter Gate fabrication:

LD 2:

Completed, currently stored.

LD 5A, 8 and 10:

Scheduled completion 2023.



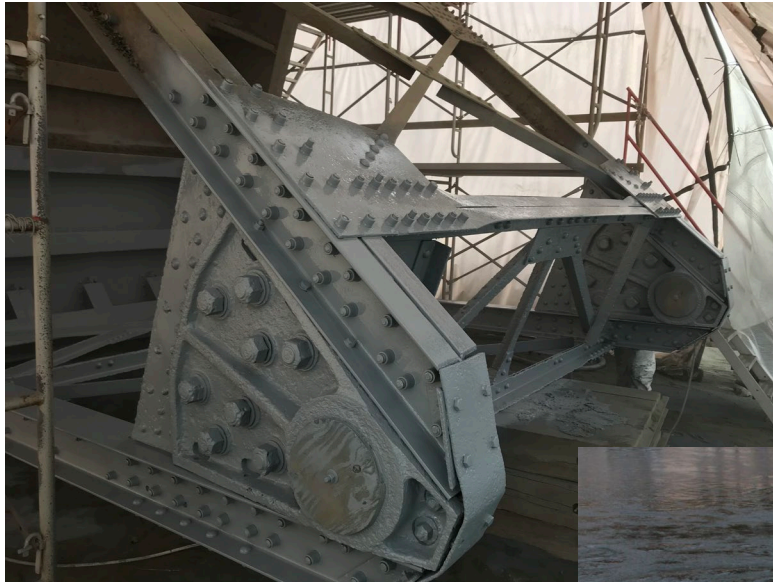
**BUILDING STRONG®**  
*and Taking Care of People!*





# CURRENT LD WORK – M & R

LD 4 - Bullnose repair / Blast & Paint chamber valves



**BUILDING STRONG®**  
*and Taking Care of People!*



# COMPLETED WORK



- LD 4, 5, 5A, 8 & 9
  - ✓ Guide wall crib grouting
- LD 6
  - ✓ Lower end cell
- USAF
  - ✓ TG Rehab
- LD 5 / 5A
  - ✓ Aux closure



**BUILDING STRONG®**  
*and Taking Care of People!*





# SCHEDULED MAINTENANCE THIS YEAR



- LD 4 – Dewater (tentative next winter).
- LD 2 – MG anchorage replacement.
- LD 2 - TG chain replacement.
- Base radio upgrades.
  - LD 4 completed.
  - LD 2 & 3 scheduled this year.
  - LD 5 & 5A, next.
- LD 5 & 5A – Tow rail rehab (next winter).



**BUILDING STRONG®**  
*and Taking Care of People!*



# CREW CHANGE NOTIFICATION



Electronic crew change notification:

[MVP\\_IndustryCrewChangeNotification@usace.army.mil](mailto:MVP_IndustryCrewChangeNotification@usace.army.mil)

One address for all of MVP LD staff (LSAF through LD10)



**BUILDING STRONG®**  
*and Taking Care of People!*





# QUESTIONS?



Apr 23, 2019  
LD 4 – M/V Aaron F. Barrett  
671.4' elevation, closes at 671.5'.



**BUILDING STRONG®**  
*and Taking Care of People!*