

DN 24-29

DREDGING NOTICE
U.S. ARMY CORPS OF ENGINEERS
ST. PAUL DISTRICT

NOTICE DATE: September 10 th , 2024	DREDGING CATEGORY: Routine
MEETING DATE: If requested	MEETING TIME:
BOAT REQUIREMENT:	MEETING LOCATION:
<hr/>	
DREDGE CUT NAME: Lower Dresbach Island	RIVER MILE: 703.1 - 703.3

HISTORIC DATA

Frequency: 54%	Avg. Quantity/Job: 18,383 yd ³
Date Last Dredged: Sept. 11 th , 2023	Avg. Quantity/Year: 9,872 yd ³

SURVEY DATA

Date Surveyed: September 6th, 2024
Water Surface Elevation: 638.7
Low Control Pool Elevation: 638.5
Net Difference: +0.2'
5 Day River Forecast: No Change

DREDGING DATA

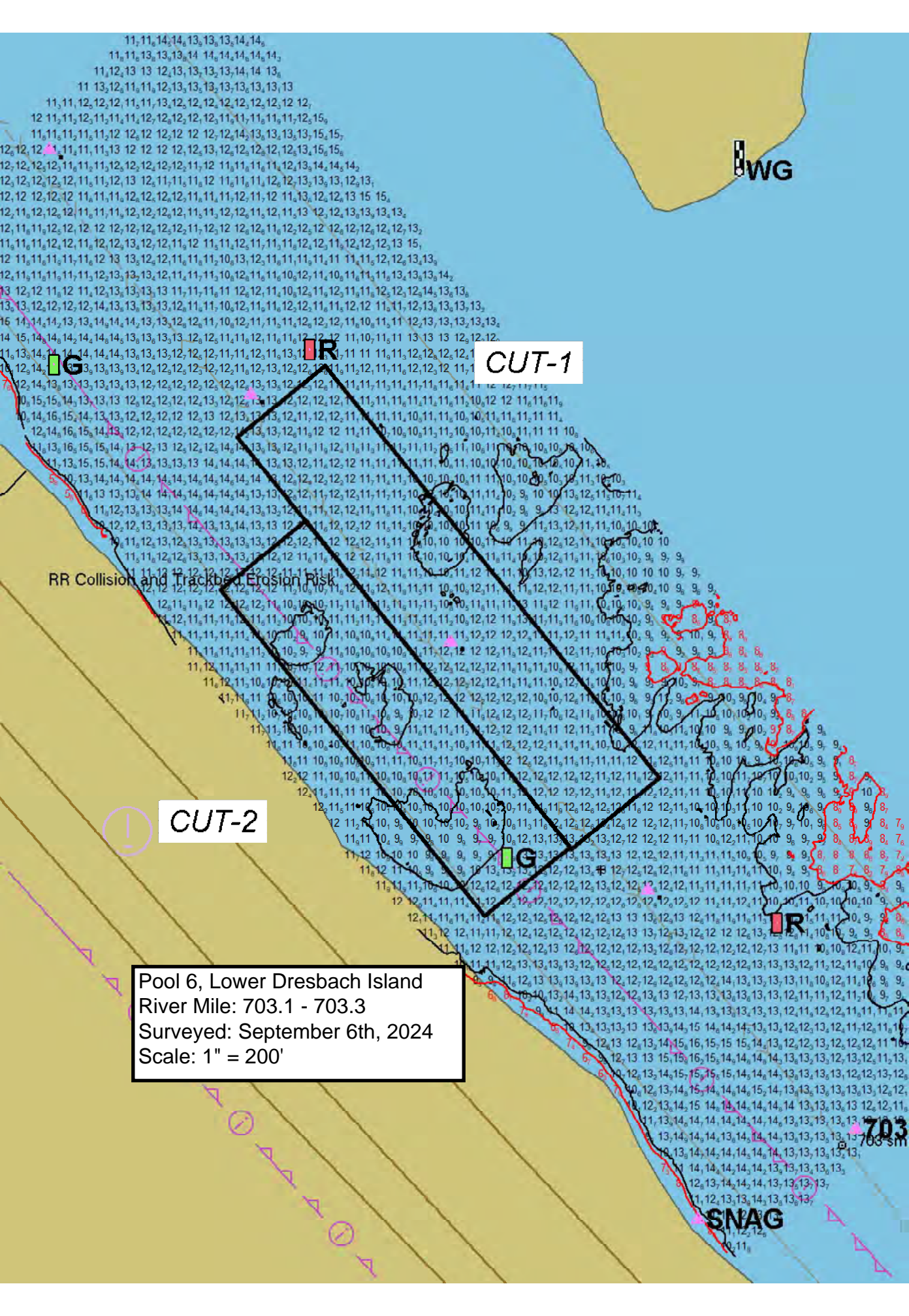
Recommended Channel Width: 300 feet
Recommended Dredging Depth: 13 feet – to try to help with tow boat steering while dealing with the outdraft.
Estimated Quantity: 17,942 yd³ plus 1,349 yd³ for placement site access
Type of Dredge: Contract Mechanical Plant 1
Proposed Dredging Date: September 11th for channel September 10th for access.
Estimated Duration: 10 dredging days
Justification for Dredging: The navigation channel is 450' between the 9.0' contours and restricted to 175' between the 10.5' contours.

MATERIAL PLACEMENT DATA

Proposed Placement Site: Dakota Island
Locations: 7-706.5-RMT
Site Characteristics: This is a historically used temporary island placement site.

If you have any questions concerning this project, or if you would like to request an on-site meeting, please call me at (651) 290-5155.

Dan Cottrell
Dredging Manager



11, 11, 14, 14, 13, 13, 13, 14, 14,
11, 11, 13, 13, 13, 14 14, 14, 14, 14, 14,
11, 12, 13 13 12, 13, 13, 13, 14, 14 13,
11 13, 12, 11, 11, 12, 13, 13, 13, 13, 13, 13, 13

WG

CUT-1

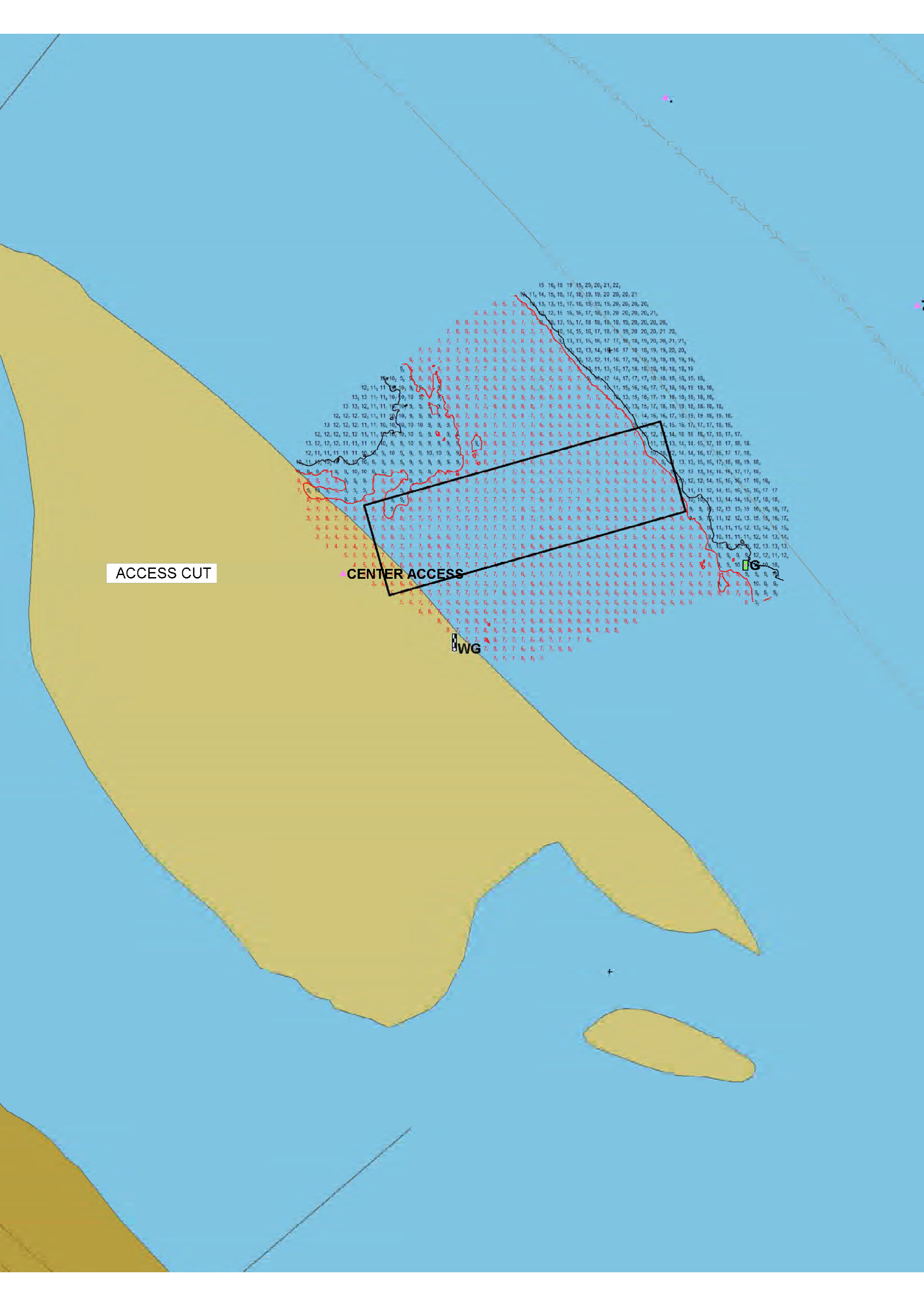
RR Collision and Tracked Erosion Risk

CUT-2

Pool 6, Lower Dresbach Island
River Mile: 703.1 - 703.3
Surveyed: September 6th, 2024
Scale: 1" = 200'

SNAG

703
703 sm



ACCESS CUT

CENTER ACCESS

WG

