

DN 22-20

DREDGING NOTICE  
U.S. ARMY CORPS OF ENGINEERS  
ST. PAUL DISTRICT

NOTICE DATE: August 4, 2022

DREDGING CATEGORY: Imminent

MEETING DATE: If requested

MEETING TIME:

BOAT REQUIREMENT:

MEETING LOCATION:

DREDGE CUT NAME: Indian Camp Light

RIVER MILE: 665.2 - 665.9

HISTORIC DATA

Frequency: 73%

Avg. Quantity/Job: 25,864 yd<sup>3</sup>

Last Date Dredged: July 26<sup>th</sup>, 2021

Avg. Quantity/Year: 18,901 yd<sup>3</sup>

SURVEY DATA

Date Surveyed: August 1<sup>st</sup>, 2022

Water Surface Elevation: 619.9

Low Control Pool Elevation: 619.3

Net Difference: +0.6'

5 Day River Forecast: Holding Steady

DREDGING DATA

Recommended Channel Width: 300 feet

Recommended Dredging Depth: 12 feet

Estimated Quantity: 29,242 yd<sup>3</sup>

Type of Dredge: Contract Mechanical Plant 1

Proposed Dredging Date: August 8<sup>th</sup>, 2022

Estimated Duration: 15 dredging days

Justification for Dredging: The navigation channel is reduced to 180' between the 9.0' contours and closed between the 10.5' contours.

MATERIAL PLACEMENT DATA

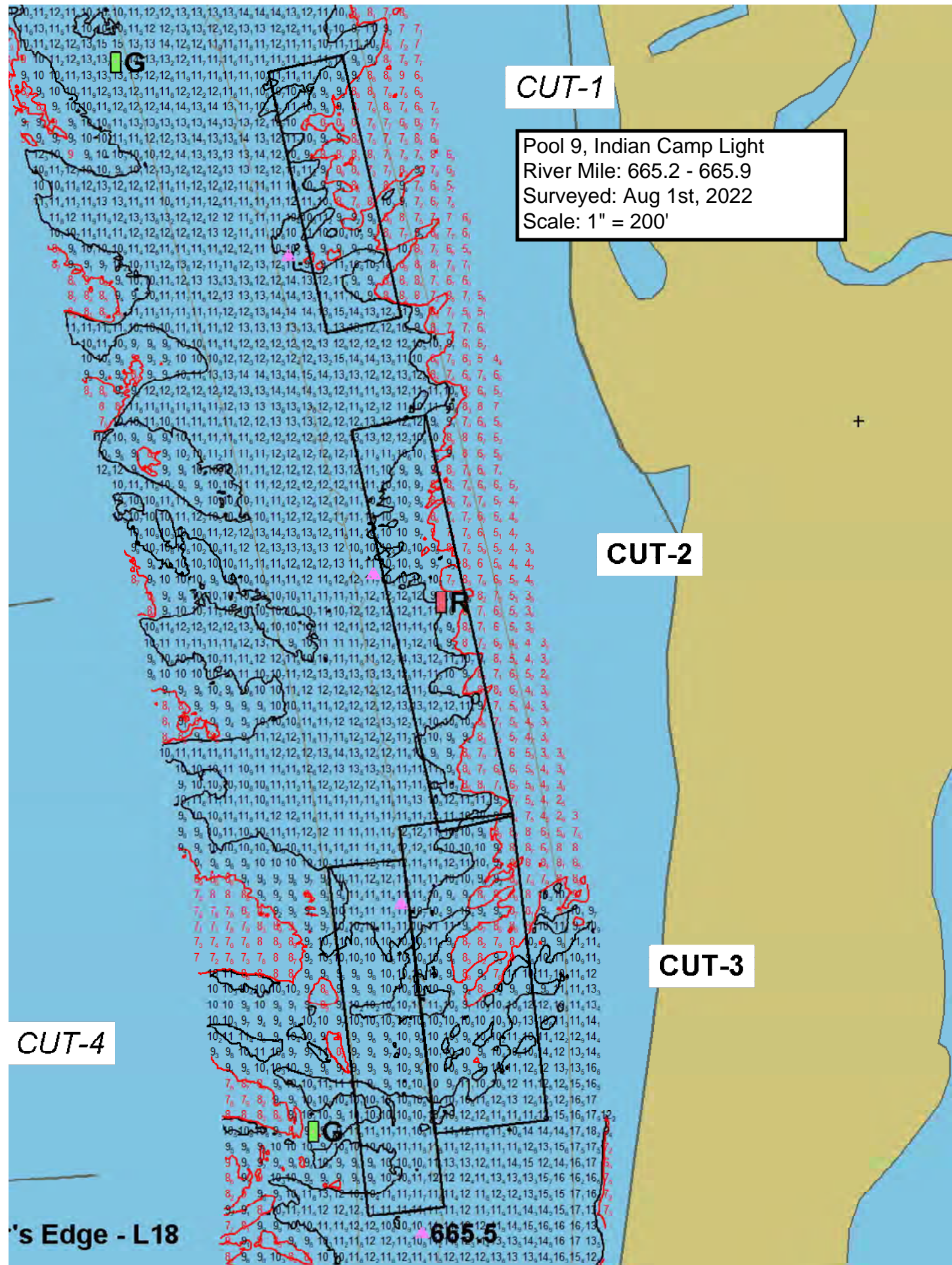
Proposed Placement Site: Lansing Hwy Bridge Site

Location: 9-663.5-LWP

Site Characteristics: The Lansing Hwy Bridge Site is an upland beneficial use site where all material is expected to be removed.

If you have any questions concerning this project or want to request an on-site meeting please call me at (651) 290-5155.

Dan Cottrell  
Dredging Manager



CUT-1

Pool 9, Indian Camp Light  
River Mile: 665.2 - 665.9  
Surveyed: Aug 1st, 2022  
Scale: 1" = 200'

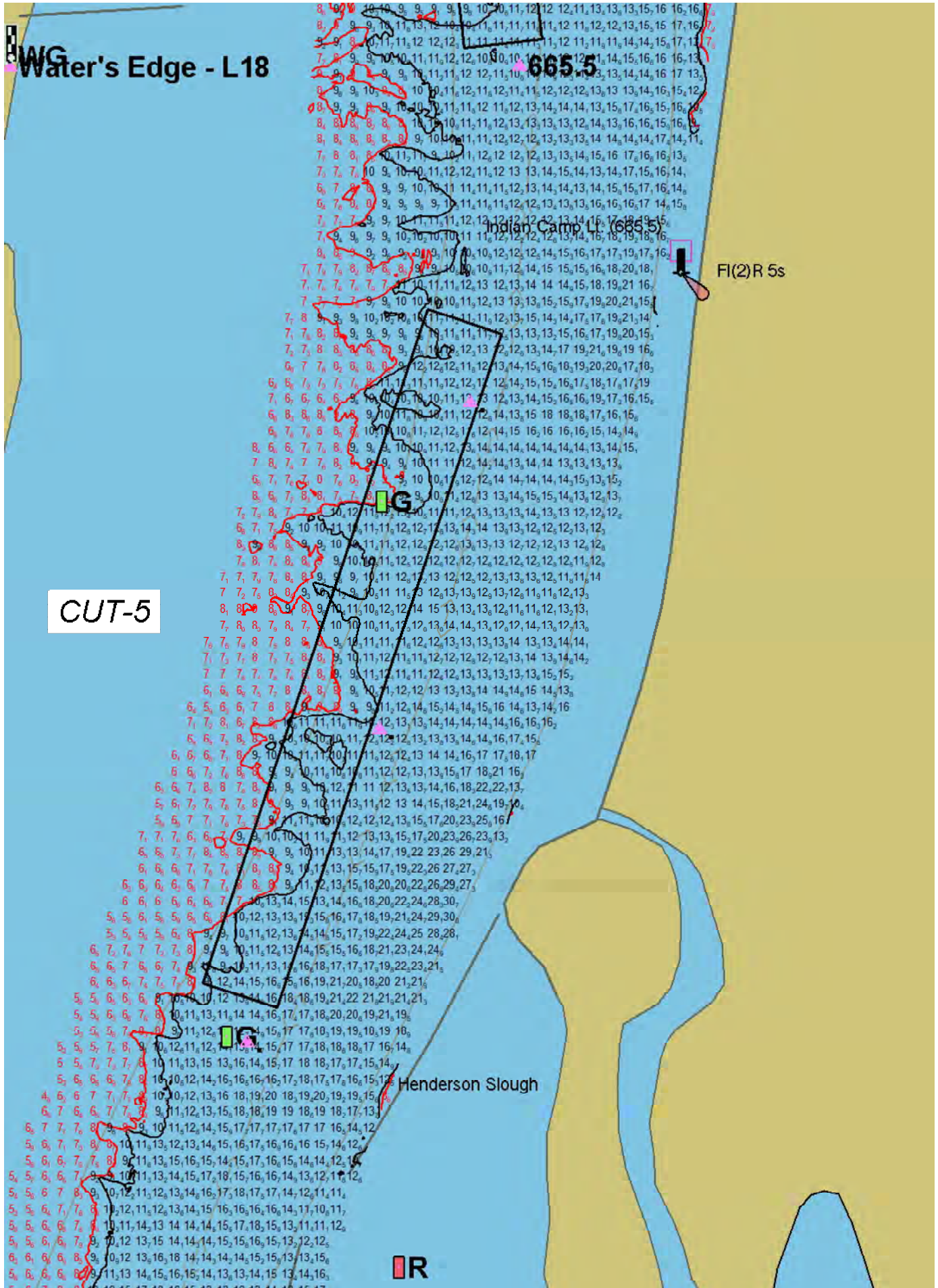
CUT-2

CUT-3

CUT-4

's Edge - L18

665.5



Water's Edge - L18

665.5

Indian Camp Lt. (665.5)

FI(2)R 5s

CUT-5

Henderson Slough

IR