



US Army Corps
of Engineers
St Paul District

PUBLIC NOTICE

Sponsor:
Don Peterson
City of Mounds View

Published: November 25, 2025
Expires: December 25, 2025

St. Paul District
Permit Application No. MVP-2020-00197-EMN

WETLAND COMPENSATORY MITIGATION BANK PROPOSAL:

Compensatory mitigation banks are one of three types of compensatory mitigation where the aquatic resources on a site are restored, established, enhanced, and/or preserved for the purpose of offsetting unavoidable adverse impacts authorized by Department of the Army permits. Once the Corps approves a mitigation bank and the site achieves certain milestones and performance standards, the sponsor receives credits, which they sell to permittees with projects in a designated geographic service area who are seeking Department of the Army permits. The sponsor is requesting Corps review of a proposed compensatory mitigation bank under [33 CFR 332.8](#) and district guidelines for mitigation. As part of this review process, the sponsor has submitted a complete prospectus. Interested parties can find a copy of the full prospectus on the [RIBITS](#) website or by emailing eric.m.norton@usace.army.mil.

SUMMARY OF PROSPECTUS:

The sponsor is proposing to develop the Ardan Park Wetland Bank. The proposed bank is approximately 16.7 acres in size, including upland buffer areas. The sponsor would restore approximately 7.9 acres of shallow marsh and 4.1 acres of wet meadow by disabling two drainage ditches and raising the outlet structure downgradient of the drainage ditches. In addition, the sponsor is proposing to establish 0.9 acre of prairie and 3.8 acres of wooded upland to act as a buffer along the restored wetlands. The sponsor would use approved seed mixes to establish native vegetation in restored wetland and upland areas within the proposed bank.

SPONSOR: Don Peterson
City of Mounds View
2466 Branson Drive
Mounds View, Minnesota 55112

AGENT: John Smyth
Stantec
733 Marquette Avenue, Suite 1000
Minneapolis, Minnesota 55402

LOCATION: The project area is located on the south side of US 10 between Long Lake Road and Edgewood Drive in Section 5, Township 30 North, Range 23 West; at

Latitude 45.118059 and Longitude -93.206789; in the City of Mounds View, Ramsey County, Minnesota.

COORDINATION WITH RESOURCE AGENCIES: This project has been coordinated with the following members of the Interagency Review Team (IRT) and other resource agencies: Minnesota Department of Natural Resources, U.S. Environmental Protection Agency, and Board of Water and Soil Resources.

CULTURAL RESOURCES:

The Corps is evaluating the undertaking for effects to historic properties as required under Section 106 of the National Historic Preservation Act. This public notice serves to inform the public of the proposed undertaking and invites comments including those from local, State, and Federal government Agencies with respect to historic resources. Our final determination relative to historic resource impacts may be subject to additional coordination with the State Historic Preservation Officer, federally recognized tribes and other interested parties.

The District Engineer's final eligibility and effect determination will be based upon coordination with the SHPO and/or THPO, as appropriate and required, and with full consideration given to the proposed undertaking's potential direct and indirect effects on historic properties within the Corps-identified permit area.

ENDANGERED SPECIES: The Corps has performed an initial review of the Prospectus and the U.S. Fish and Wildlife Service (USFWS) Information for Planning and Consultation (IPaC) to determine if any threatened, endangered, proposed, or candidate species, as well as the proposed and final designated critical habitat may occur within the boundary of the proposed project. Based on this initial review, the Corps has made a preliminary determination that the proposed project will not affect any listed species or critical habitat.

Pursuant to Section 7 ESA, any required consultation with the Service(s) will be conducted in accordance with 50 CFR part 402.

This notice serves as request to the U.S. Fish and Wildlife Service for any additional information on whether any listed or proposed to be listed endangered or threatened species or critical habitat may be present in the area which would be affected by the proposed activity.

COMMENTS: The Corps is soliciting comments from the public; Federal, State, and local agencies and officials; Indian Tribes; and other Interested parties in order to consider and evaluate the impacts of this proposed activity. Any comments received will be forwarded to the sponsor and considered during the Corps' evaluation.

The St. Paul District will receive written comments on the proposed work, as outlined above, until December 24, 2025. Comments should be submitted electronically via the Regulatory Request System (RRS) at <https://rrs.usace.army.mil/rrs> or by email to

eric.m.norton@usace.army.mil. Please refer to the permit application number in your comments.

If electronic submittal is not available, you may submit comments in writing to:

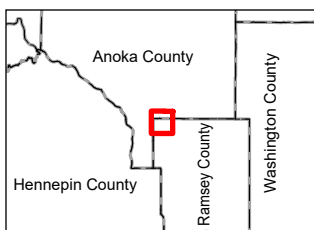
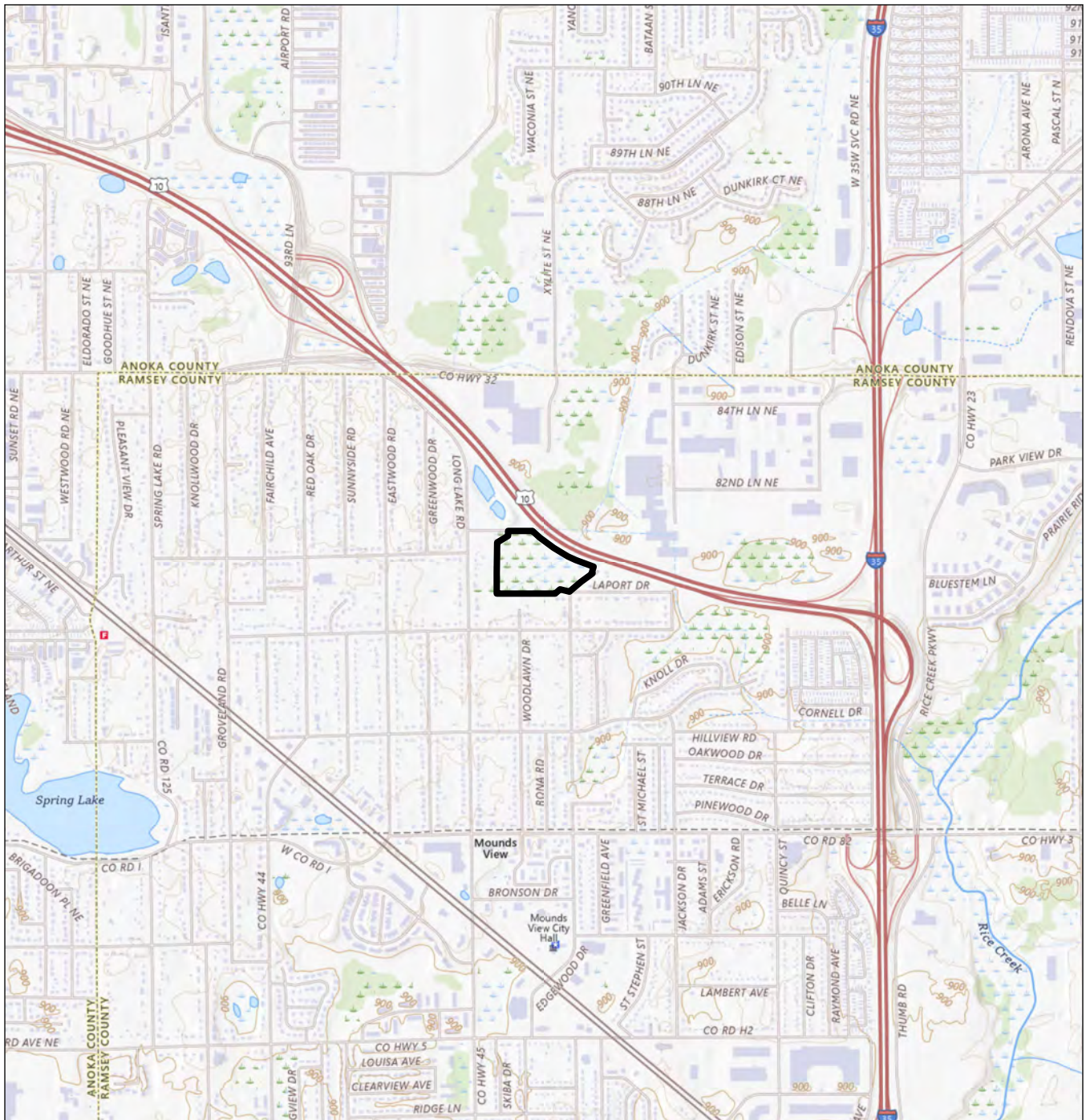
Regulatory Division
St. Paul District Corps of Engineers
2926 Post Road, Suite B
Stevens Point, Wisconsin 54481

IF YOU HAVE QUESTIONS ABOUT THE PROJECT, contact Eric Norton at the Stevens Point field office at (715) 308-6898.

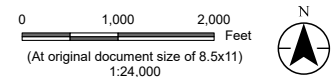
To receive Public Notice notifications, go to:
<https://www.mvp.usace.army.mil/Contact/RSS/> and subscribe to the RSS Feed for which you would like to receive Public Notices.

Any person may request, in writing, within the comment period specified in this notice, that a public hearing be held to consider this application. Requests for public hearings shall state, in detail, the reasons for holding a public hearing. A request may be denied if substantive reasons for holding a hearing are not provided or if there is otherwise no valid interest to be served.

Enclosures: Ardan Park Wetland Bank Project Figures



Legend
 Wetland Easement Boundary



Project Location
T30N, R23W, S5
C. of Mounds View, Ramsey Co., MN
Client/Project
City of Mounds View
Ardan Park Wetland Bank
Prepared by BS on 2025-08-21
193806306

Figure No.
1
Title
Site Location Map

Notes
1. Coordinate System: NAD 1983 HARN Adj MN
Ramsey Feet
2. Data Sources: USGS
3. Background: USGS 7.5 Minute Quadrangle

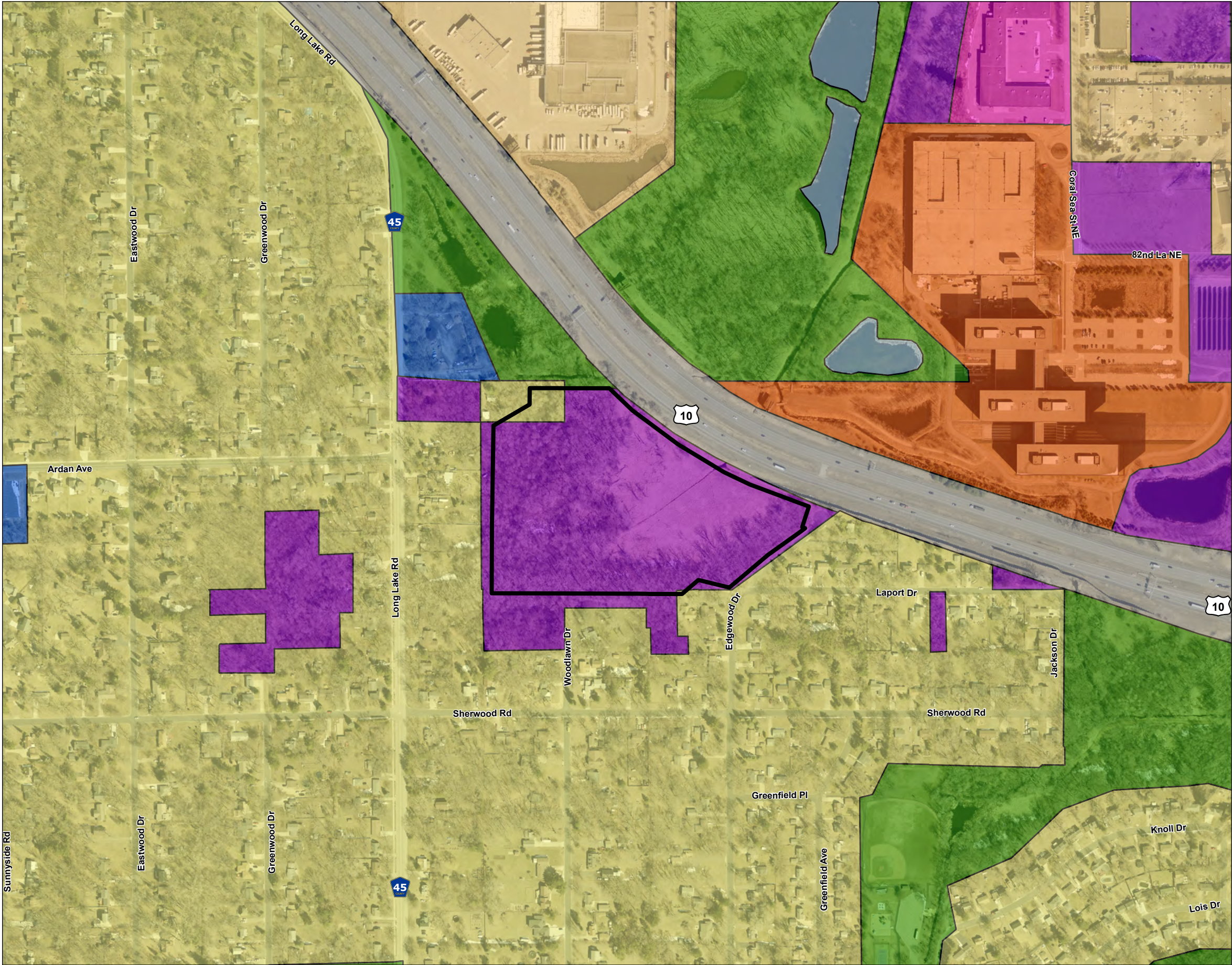


Figure No.
2

Title
Land Use Map

Client/Project
City of Mounds View
Ardan Park Wetland Bank

193806306

Project Location
T30N, R23W, S5
C. of Mounds View, Ramsey Co., MN

Prepared by BS on 2025-08-21

N

0200400

Feet

(At original document size of 11x17)

1:4,800

- Legend
- Wetland Easement Boundary

Met Council 2020 Land Use

Industrial or Utility

Institutional

Major Highway

Mixed Use Industrial

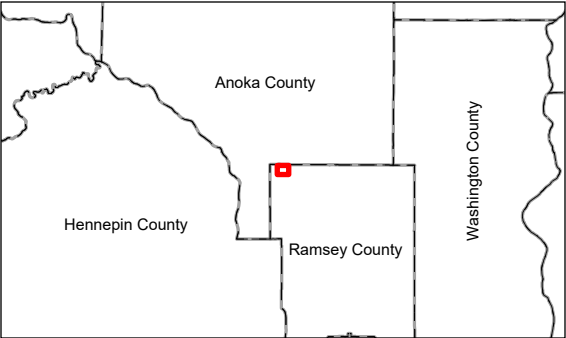
Office

Open Water

Park, Recreational, or Preserve

Single Family Detached

Undeveloped



Notes

- Coordinate System: NAD 1983 UTM Zone 15N
- Data Sources: Ramsey County, Met Council
- Background: Ramsey County 2024 Aerial



V:\1938\Active\193806306\03_data\gis_cad\gis\pro\wetland_delineation\wetland_delineation.aprx Revised: 2025-08-21 By: bschafermeyer

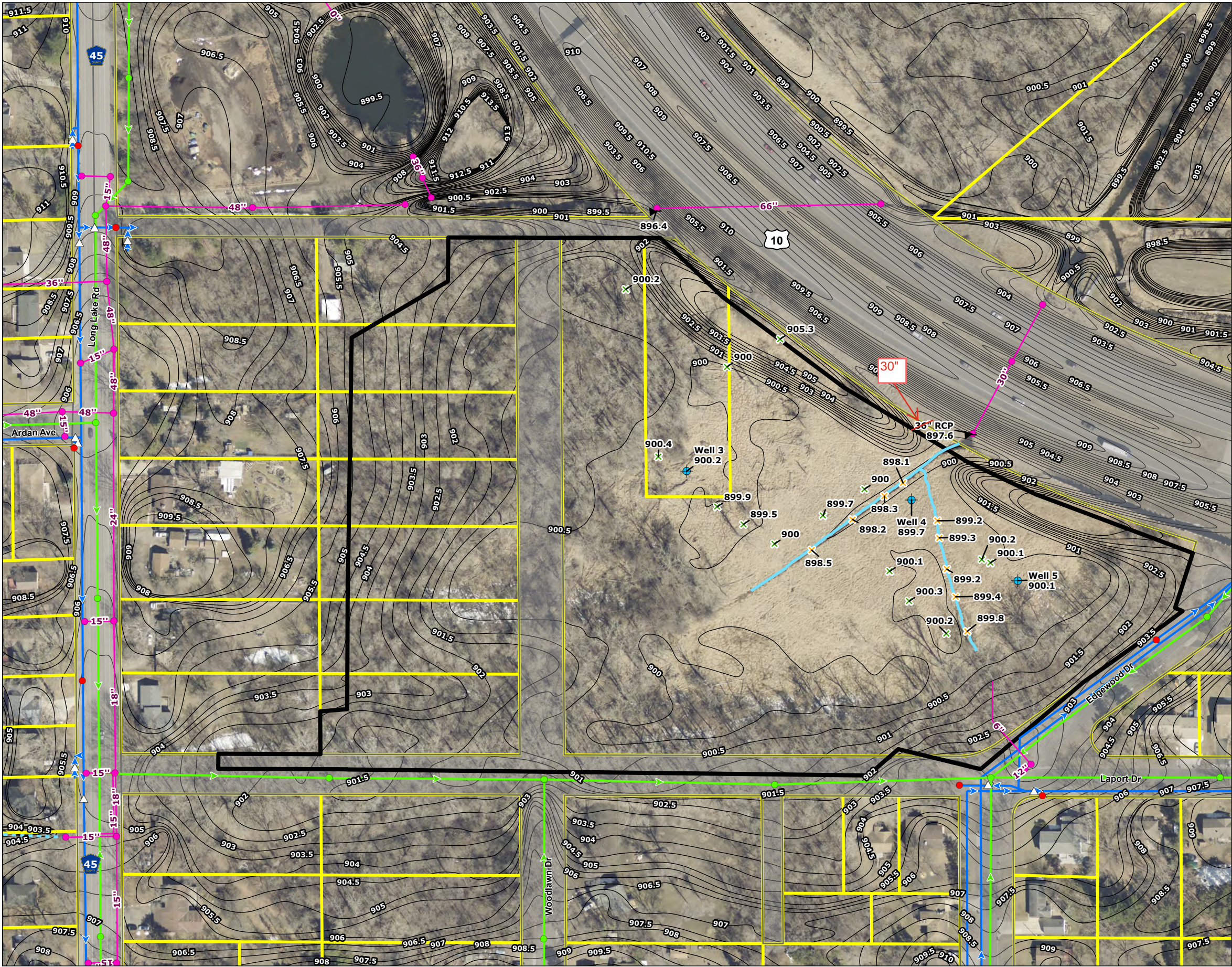
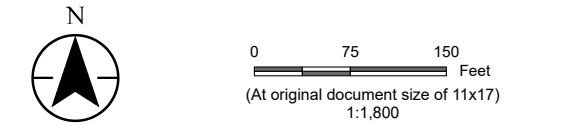


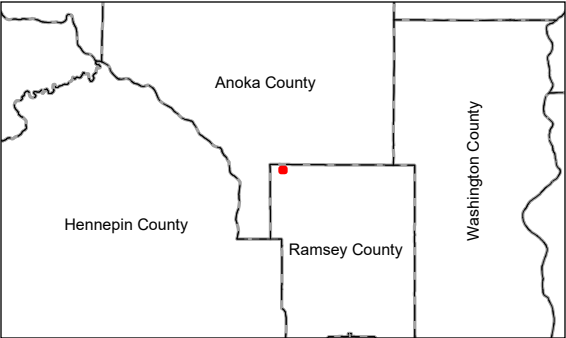
Figure No.
3
Title
Existing Conditions

Client/Project
City of Mounds View
Ardan Park Wetland Bank

Project Location
T30N, R23W, S5
C. of Mounds View, Ramsey Co., MN



- Legend
- Wetland Easement Boundary
 - Ramsey County Parcel
 - ROW
 - Ditch
 - Ditch From Long Lake Woods
 - Half Foot Contour
 - Ditch Spot Elevations
 - Ground Spot Elevation
 - Culvert Elevation
 - Well Elevation
- Moundsview Utilities
- Water Main
 - Sanitary Pipe
 - Stormwater Pipe Diameter
 - Gate Valve
 - Hydrant
 - Sanitary Manhole
 - Stormwater Structure



Notes
1. Coordinate System: NAD 1983 UTM Zone 15N
2. Data Sources: Ramsey County, USGS
3. Background: Ramsey County 2024 Aerial



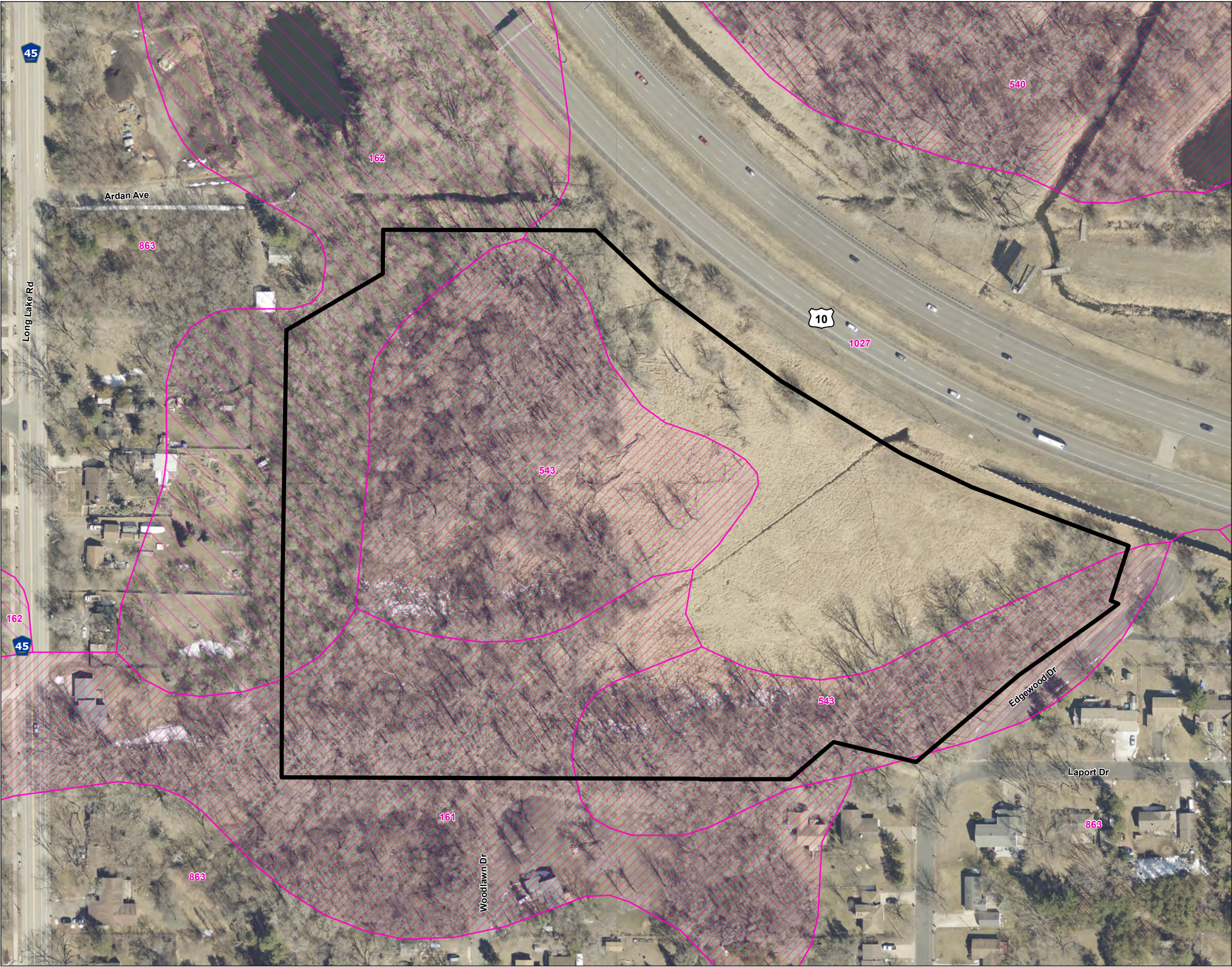


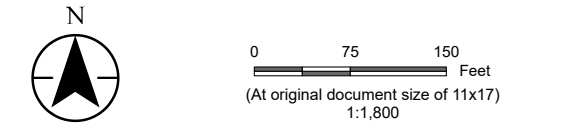
Figure No.
4
Title
Web Soil Survey Map

Client/Project
City of Mounds View
Ardan Park Wetland Bank

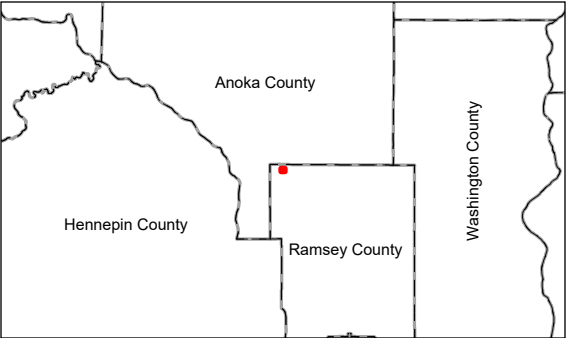
193806306

Project Location
T30N, R23W, S5
C. of Mounds View, Ramsey Co., MN

Prepared by BS on 2025-08-21



- Legend
- Wetland Easement Boundary
 - NRCS Soil Survey Data
 - Hydric Rating
 - Predominantly Hydric Soil
 - Partially Hydric Soil
 - Non-Hydric Soil



Notes
1. Coordinate System: NAD 1983 UTM Zone 15N
2. Data Sources: Ramsey County, USDA
3. Background: Ramsey County 2024 Aerial



Wetland Bank Service Areas

With
Major Watersheds &
County Boundaries

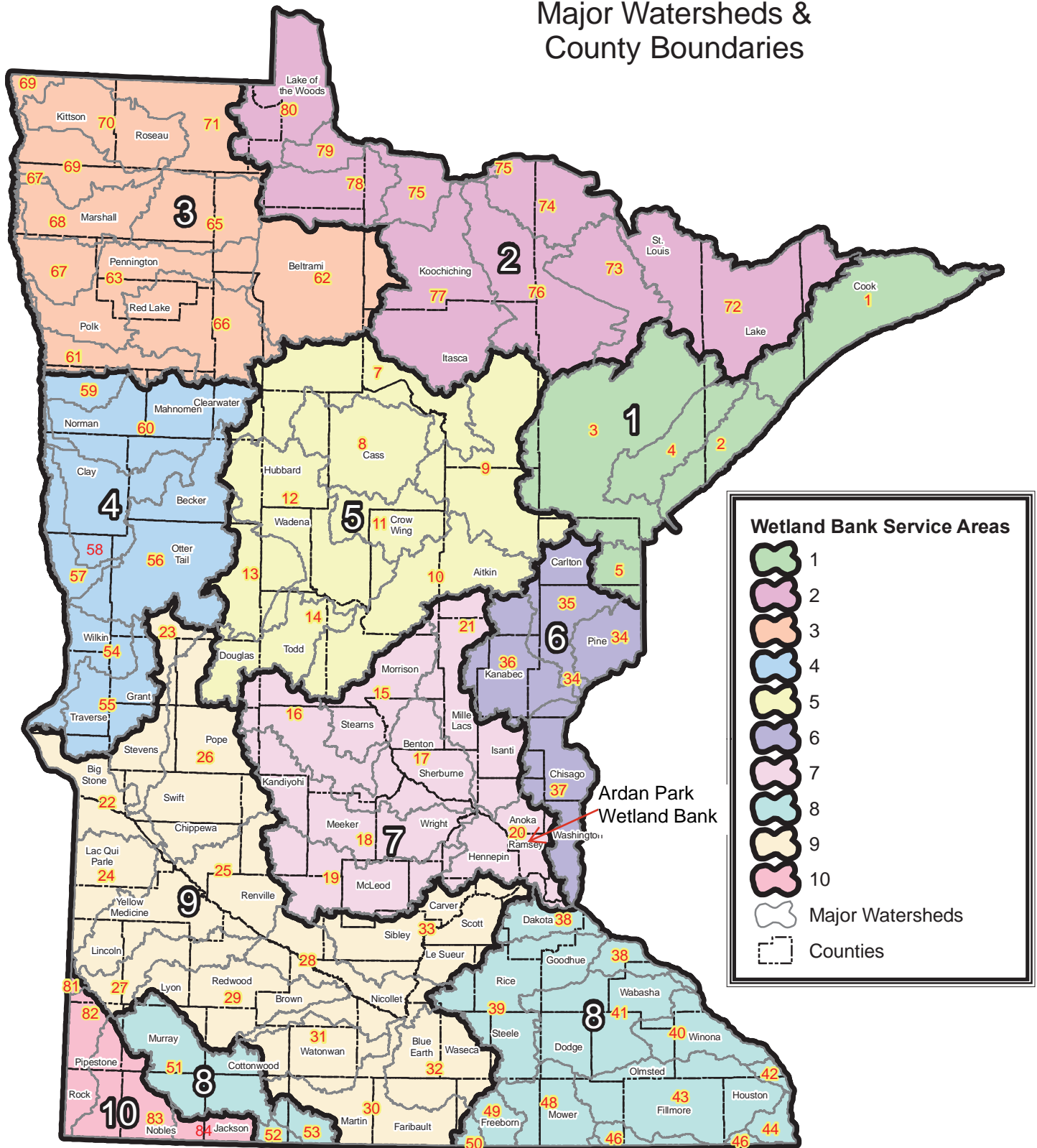
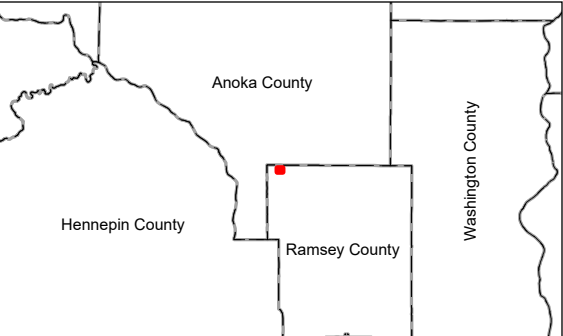
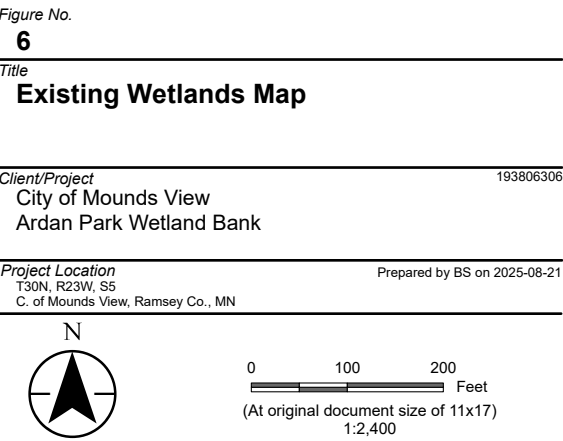


Figure No. 5
Title: Watershed/BSA Map

Client/Project: City of Mounds View/Ardan Park Wetland Bank



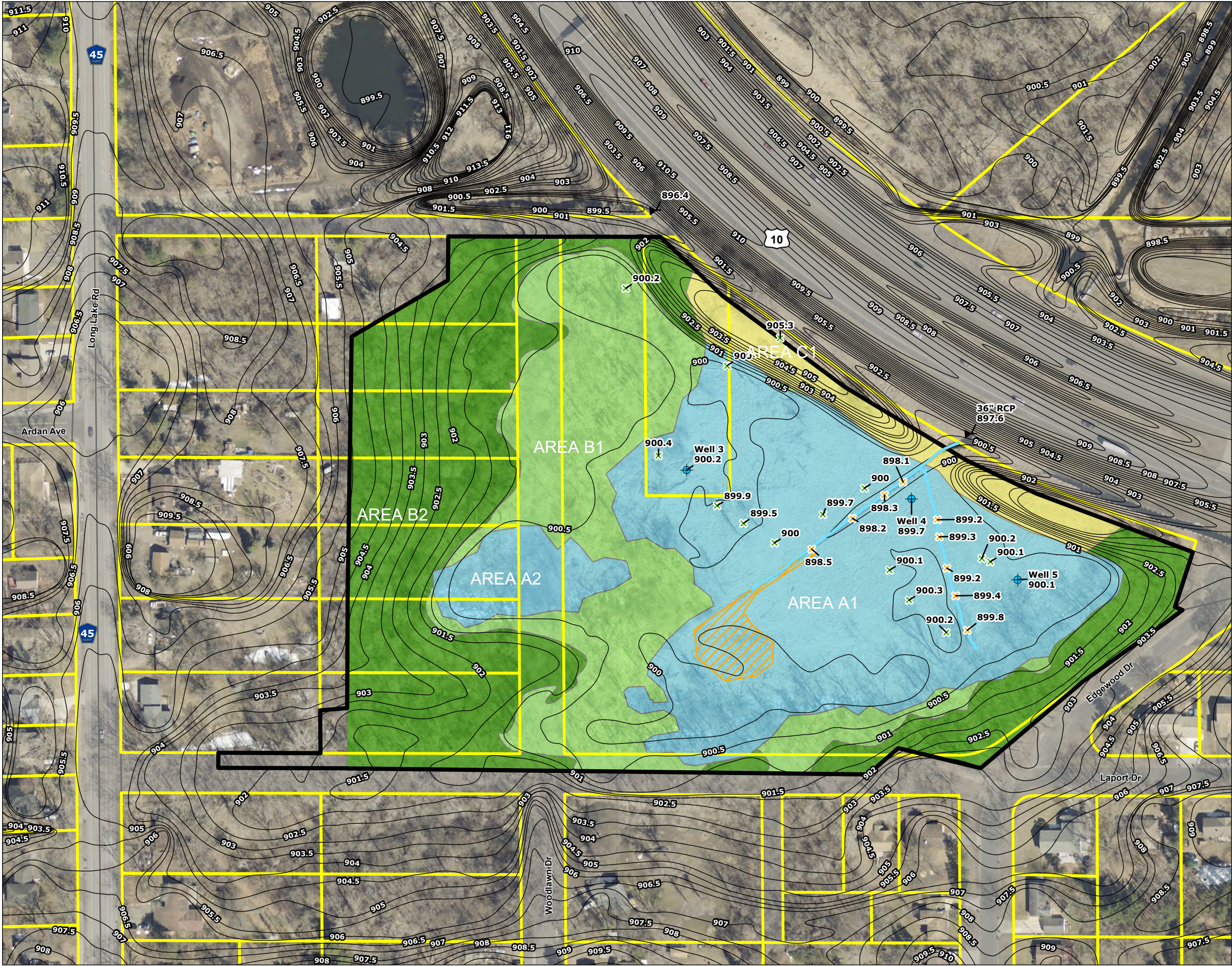


Figure No.
7

Title
Existing Conditions Vegetation Map

Client/Project
City of Mounds View
Ardan Park Wetland Bank

193806306

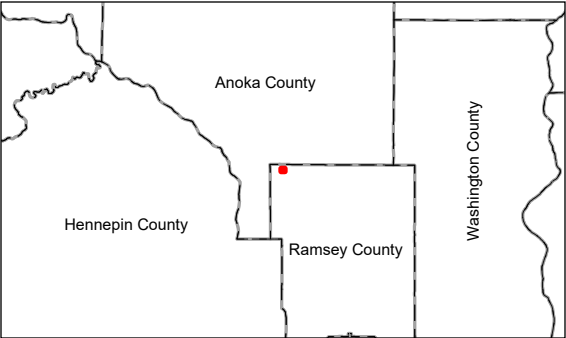
Project Location
T30N, R23W, S5
C. of Mounds View, Ramsey Co., MN

Prepared by BS on 2025-10-07

N

0 75 150 Feet
(At original document size of 11x17)
1:1,800

- Legend
- Wetland Easement Boundary
 - Ramsey County Parcel
 - ROW
 - Non-Forested Upland Buffer (0.82 ac.)
 - Upland Forest (5.43 ac.)
 - Upland Forest (Proposed Wet Meadow) (3.76 ac.)
 - Wet Meadow (Proposed Sh. Marsh) (6.64 ac.)
 - Phragmites Colony
 - Ditch
 - Half Foot Contour
 - Ditch Spot Elevations
 - Ground Spot Elevation
 - Culvert Elevation
 - Well Elevation



Notes

1. Coordinate System: NAD 1983 UTM Zone 15N
2. Data Sources: Ramsey County, USGS
3. Background: Ramsey County 2024 Aerial



V:\1938\Arden\193806306\03_data\gis_cad\gis\pro\wetland_delineation\wetland_delineation.aprx Revised: 2025-10-07 By: bschafermeyer

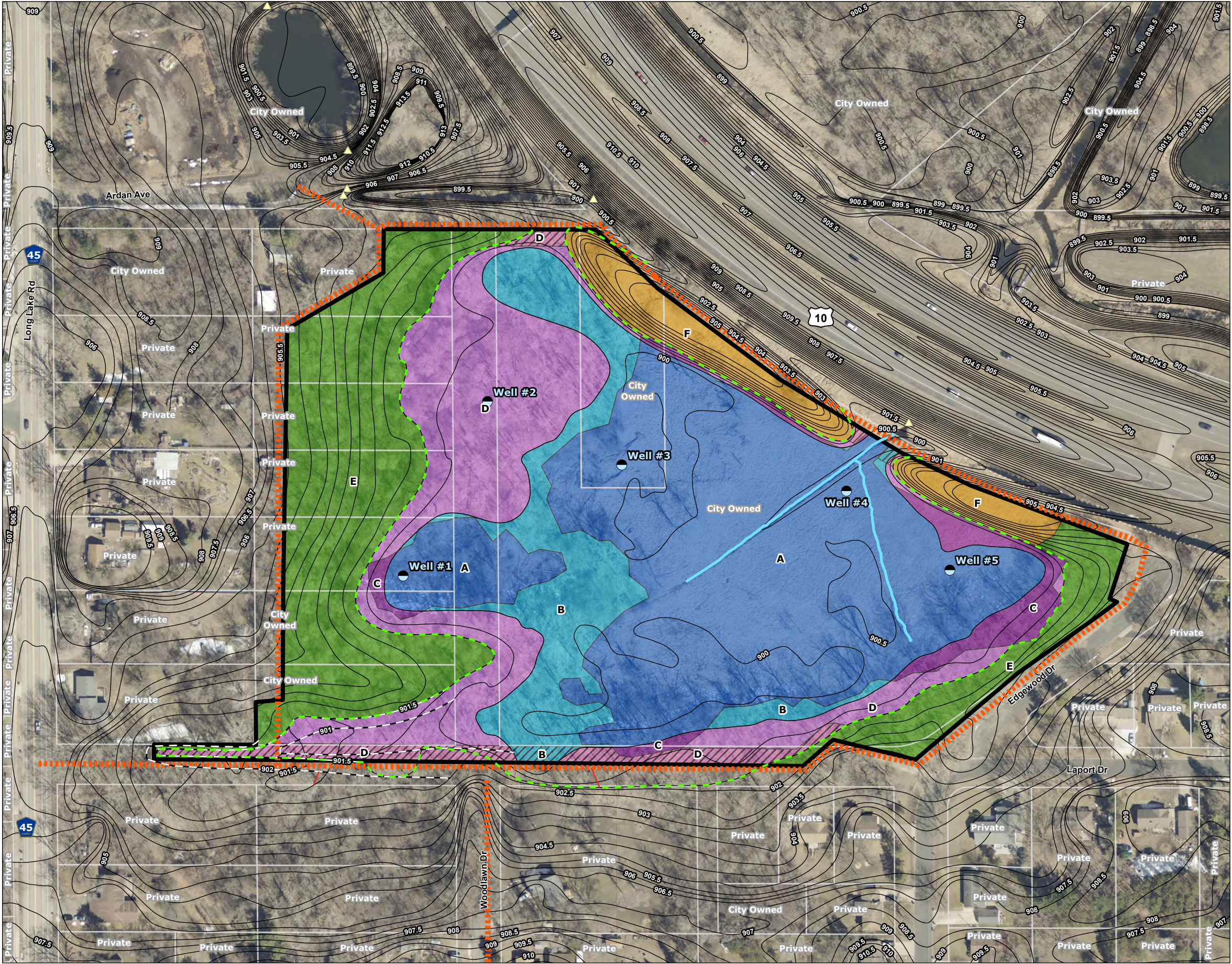
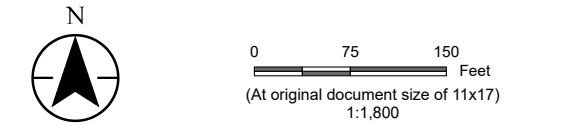


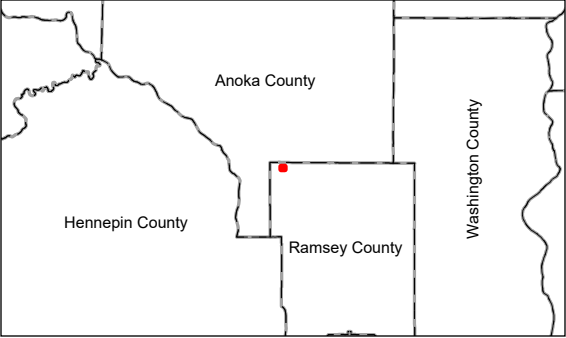
Figure No. 8
Title Credit Allocation Map

Client/Project City of Mounds View
Ardan Park Wetland Bank

Project Location T30N, R23W, S5
C. of Mounds View, Ramsey Co., MN



- Legend
- Wetland Easement Boundary
 - Parcel Boundary
 - A: Shallow Marsh Rehabilitation - Subp. 4B (6.1 ac.)
 - B: Shallow Marsh Reestablishment - Subp. 3 (1.7 ac.)
 - BR: Shallow Marsh Reestablishment (Reduced Credit) (0.1 ac.)
 - C: Wet Meadow Rehabilitation - Subp. 4B (0.6 ac.)
 - D: Wet Meadow Reestablishment - Subp. 3 (3.0 ac.)
 - DR: Wet Meadow Reestablishment (Reduced Credit) (0.5 ac.)
 - E: Woodland Upland Buffer - Subp. 2 (3.8 ac.)
 - F: Prairie Upland Buffer - Subp. 2 (0.9 ac.)
 - Half Foot Contour
 - Proposed Contour
 - Restored Wetland Boundary (901.5 ft Elevation Contour)
 - Potential Trail
 - Culvert
 - Well Location



Notes
1. Coordinate System: NAD 1983 UTM Zone 15N
2. Data Sources: Ramsey County, USGS
3. Background: Ramsey County 2024 Aerial



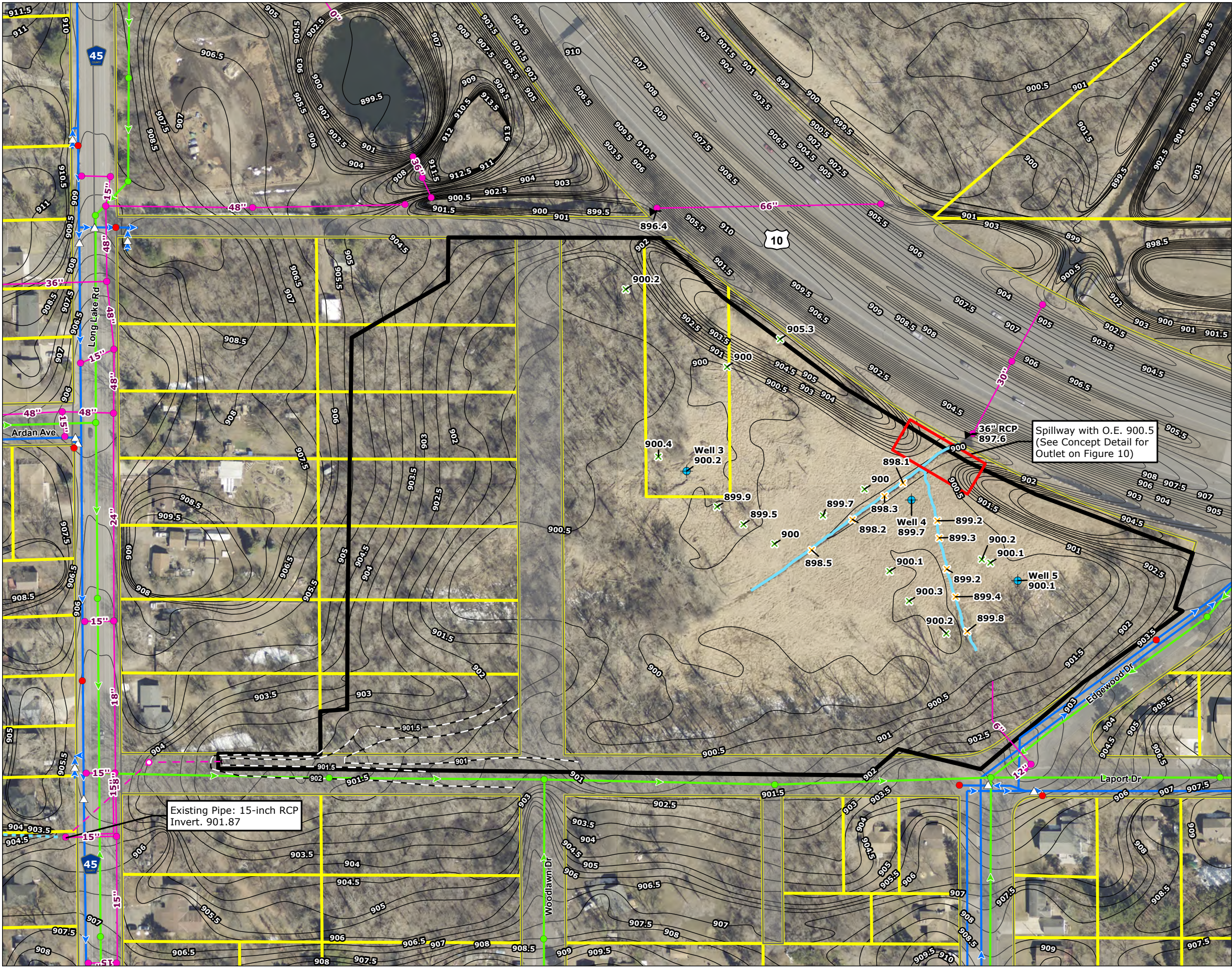


Figure No.
9

Title
Concept Plan

Client/Project
City of Mounds View
Ardan Park Wetland Bank

Project Location
T30N, R23W, S5
C. of Mounds View, Ramsey Co., MN

193806306

Prepared by BS on 2025-10-08

N

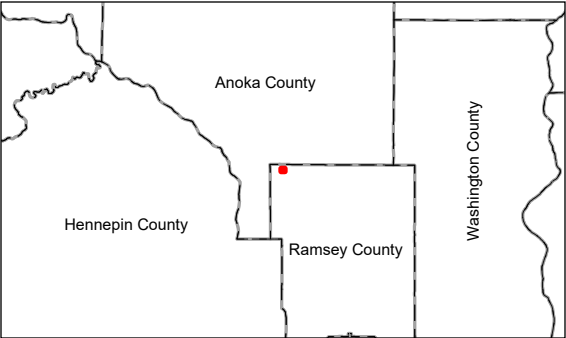
075150

Feet

(At original document size of 11x17)

1:1,800

- Legend
- Wetland Easement Boundary
 - Ramsey County Parcel
 - ROW
 - Ditch
 - Ditch From Long Lake Woods
 - Half Foot Contour
 - Proposed Contour
 - Ditch Spot Elevations
 - Ground Spot Elevation
 - Culvert Elevation
 - Well Elevation
 - Proposed Manhole
 - Proposed 15-inch RCP Reroute to Wetland
- Moundsview Utilities
- Water Main
 - Sanitary Pipe
 - Stormwater Pipe
 - Gate Valve
 - Hydrant
 - Sanitary Manhole
 - Stormwater Structure



Notes

- Coordinate System: NAD 1983 UTM Zone 15N
- Data Sources: Ramsey County, USGS
- Background: Ramsey County 2024 Aerial



