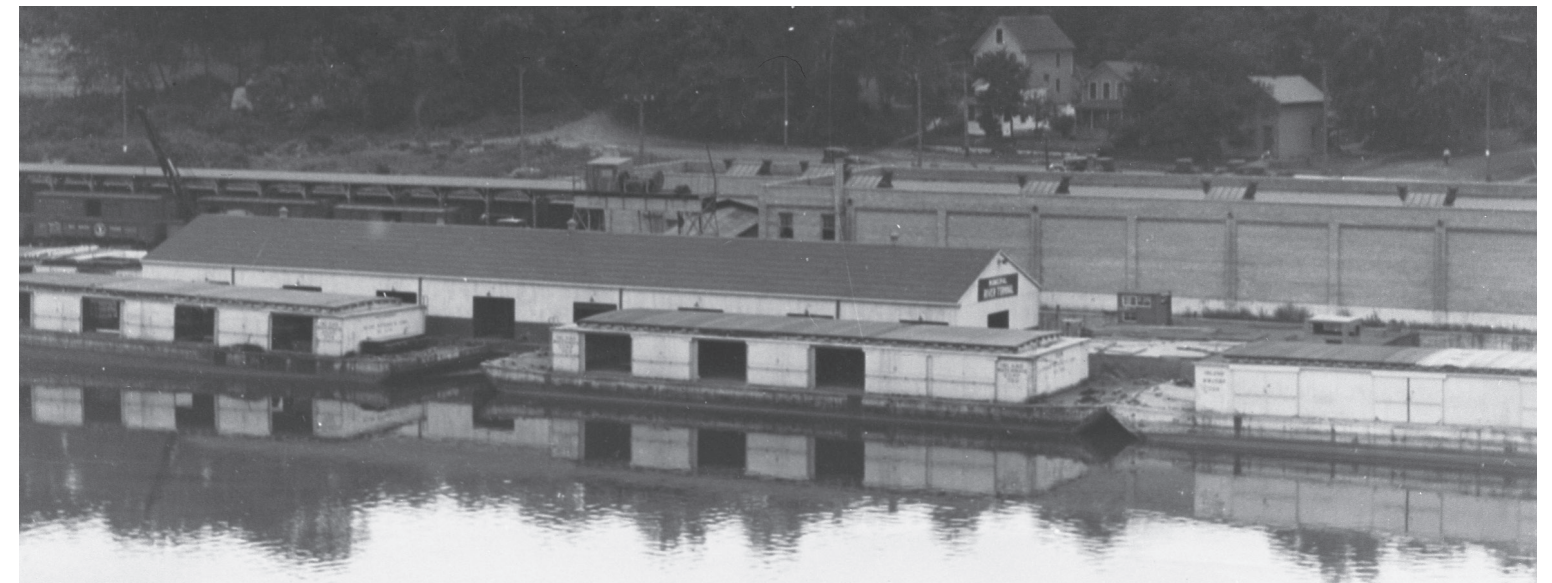
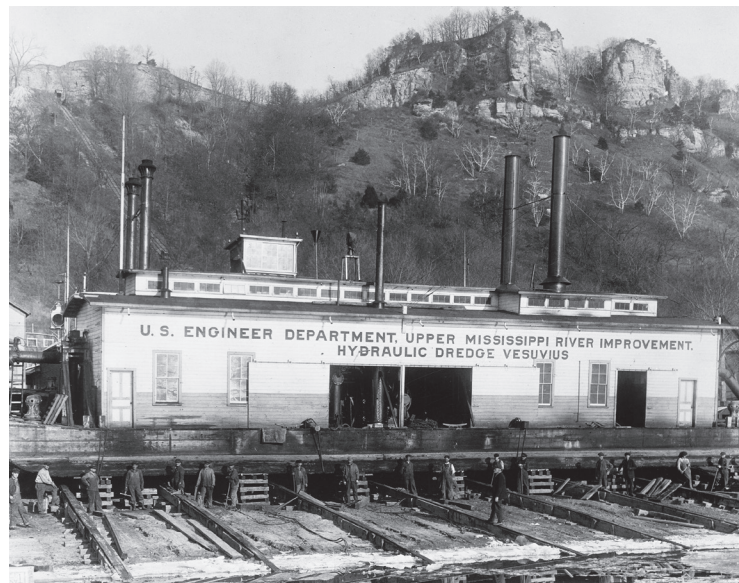


Fountain City, Wisconsin, Boatyard



- The Fountain City, Wisconsin, Boatyard has played an essential role in supporting the U.S. Army Corps of Engineers' efforts to improve navigation on the Upper Mississippi River for more than 100 years.
- The boatyard is where the St. Paul District maintains its heavy equipment, to include welders, compressors, and blasting and painting tools, to support and maintain the district's locks and dams and floating plant.
- The boatyard was originally established by the Corps' Rock Island District, the boundaries of which extended upriver to just below St. Paul, Minnesota until 1919. It was selected because Fountain City had a natural protective harbor formed by the widening mouth of Waumandee Creek as it joined the Mississippi River just north of the city.
- In 1919, the Corps redrew the St. Paul District's boundaries to extend as far south as northern Iowa. As a result, the St. Paul District consolidated its former service facilities, which had been located on the St. Croix River with the boatyard at Fountain City.
- The district's dredging fleet, consisting of the Dredge Goetz, the Motor Vessel General Warren and the Quarters Barge Taggatz, as well as its other vessels, currently call the Fountain City Boatyard home.

