



US Army Corps of Engineers®

THE ST. PAUL DISTRICT

covers **139K** SQUARE MILES

contains **4** MAJOR RIVER BASINS
▶ Mississippi
▶ Red River of the North
▶ Souris
▶ Rainy

operates in **5** STATES
▶ Minnesota
▶ Wisconsin
▶ North Dakota
▶ Iowa
▶ South Dakota

manages **13** LOCKS & DAMS

maintains **9-ft.** NAVIGATION CHANNEL along **284** RIVER MILES in the Upper Mississippi River System

operates **16** FLOOD RISK REDUCTION RESERVOIRS | **25** FEDERALLY RECOGNIZED TRIBES within district

operates out of **41** LOCATIONS | REGIONAL WORKFORCE | employs **700** people | **30%** veterans

missions **6**
▶ Emergency Operations & Disaster Response
▶ Regulatory
▶ Navigation
▶ Environmental Management & Engineering
▶ Flood Response & Risk Management
▶ Recreation

U.S. Army Corps of Engineers
ST. PAUL DISTRICT
180 5th STREET E, STE 700
SAINT PAUL, MN 55101

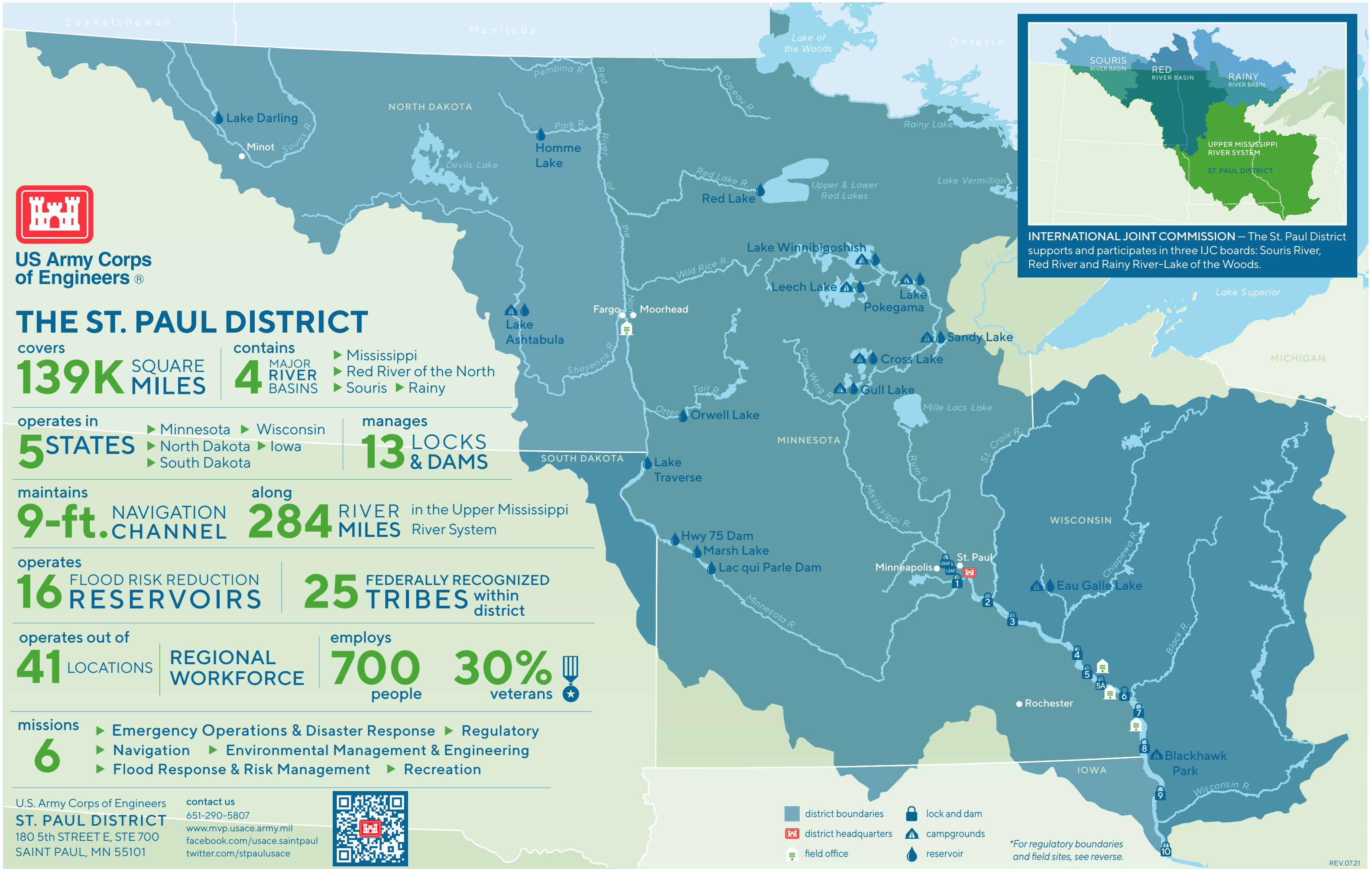
contact us
651-290-5807
www.mvp.usace.army.mil
facebook.com/usace.saintpaul
twitter.com/stpaulusace



- district boundaries
- district headquarters
- field office
- lock and dam
- campgrounds
- reservoir

*For regulatory boundaries and field sites, see reverse.

INTERNATIONAL JOINT COMMISSION – The St. Paul District supports and participates in three IJC boards: Souris River, Red River and Rainy River-Lake of the Woods.

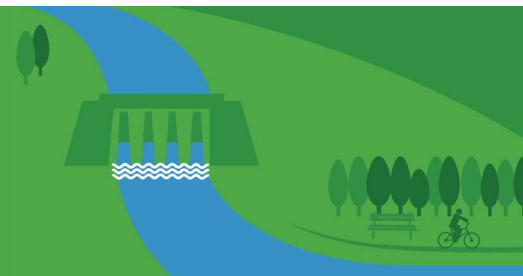




**US Army Corps
of Engineers®**
St. Paul District

THE ST. PAUL DISTRICT EST. 1866

Driven to be a world-class **district that delivers** for our workforce, region, enterprise and nation by **BUILDING STRONG** and **Taking Care of People!**



NAVIGATION

Providing safe, reliable, cost-effective & environmentally sustainable waterborne transportation on the Upper Mississippi River

Maintaining a 9-ft. navigation channel and 13 locks and dams allows:

on average
17M tons of commodities to travel past Lock and Dam 10 in Guttenberg, Iowa, per year

saving
\$430M to shipping industries using inland waterways instead of overland shipping

90% less greenhouse gas emissions by using barges instead of semis

dredged material
1M cubic yards of sand dredged each year to maintain 9-ft. channel enough to fill the Capitol rotunda **20 times**

1 5-BARGE TOW = **216** RAIL CARS = **1,050** LARGE SEMIS

the Mississippi River

25% of all waterborne commerce in the U.S. depends on the Mississippi River

4th largest watershed in the world

92% of the nation's agriculture exports travel on the Mississippi



used for
▶ highways
▶ beaches
▶ habitat projects

SUPPORT TO OTHERS

Providing world-class engineering solutions

our engineering customers include



- ▶ Veterans Administration
- ▶ US Customs and Border Patrol
- ▶ Native American Tribes
- ▶ International Joint Commission
- ▶ Department of Energy
- ▶ US Army
- ▶ US Air Force
- ▶ NASA

DISASTER RESPONSE

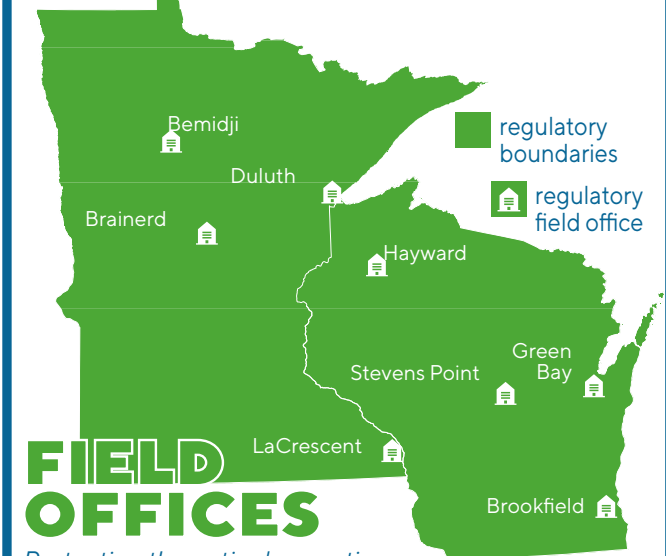
completed **12 MISSIONS** SINCE 2017

supported **450** disaster response or recovery response DEPLOYMENTS SINCE 2017



REGULATORY

Helping to sustain aquatic resources for future generations



FIELD OFFICES

Protecting the nation's aquatic resources and navigation while enabling reasonable development through fair and balanced permit decisions.

evaluates **10K** REQUESTS PER YEAR

helped more than

50K

acres of wetlands to be RESTORED & ENHANCED

RECREATION

Supplying healthy, accessible outdoor recreational activities

2.3M visitors per year to our recreation sites

spend **\$79M** in LOCAL & REGIONAL ECONOMIES



650 CAMPSITES | **27** BOAT LAUNCH RAMPS | **10** BEACHES | **49** RECREATION AREAS

FLOOD RISK MANAGEMENT

Reducing flood risk to communities in the Upper Midwest

every **dollar** invested in the Corps' flood risk management program saves **\$8** Americans

95 LEVEE SYSTEMS ~165 MILES participate in our **FEDERAL LEVEE** inspection program

Examples of Projects REDUCING RISK

- ▶ Grand Forks/East Grand Forks
- ▶ Mankato
- ▶ Rochester
- ▶ St. Paul

On average, in the last 10 years, the St. Paul District flood risk management and emergency response activities

SAVE **\$600M** per year

ENVIRONMENTAL SUSTAINABILITY

Restoring and protecting habitat for fish and wildlife

Stewardship of Public Land manage more than **77K** acres of public land responsible for grassland, fisheries, forest and wetland management

Environmental Infrastructure Program assisted more than **50** communities with **75** water infrastructure projects

Upper Mississippi River Restoration Program

completed **28** restoration projects

improving **39K** acres of river or floodplain habitat

