



**U.S. ARMY CORPS OF ENGINEERS  
REGULATORY PROGRAM  
APPROVED JURISDICTIONAL DETERMINATION FORM (INTERIM)  
NAVIGABLE WATERS PROTECTION RULE**

**I. ADMINISTRATIVE INFORMATION**

Completion Date of Approved Jurisdictional Determination (AJD): 8/24/2020

ORM Number: MVP-2020-01341-JMB

Associated JDs: N/A

Review Area Location<sup>1</sup>: State/Territory: Wisconsin City: Eau Claire County/Parish/Borough: Chippewa

Center Coordinates of Review Area: Latitude 44.87251 Longitude -91.45724

**II. FINDINGS**

**A. Summary:** Check all that apply. At least one box from the following list MUST be selected. Complete the corresponding sections/tables and summarize data sources.

- ☐ The review area is comprised entirely of dry land (i.e., there are no waters or water features, including wetlands, of any kind in the entire review area). Rationale: N/A or describe rationale.
- ☐ There are "navigable waters of the United States" within Rivers and Harbors Act jurisdiction within the review area (complete table in Section II.B).
- ☐ There are "waters of the United States" within Clean Water Act jurisdiction within the review area (complete appropriate tables in Section II.C).
- ☒ There are waters or water features excluded from Clean Water Act jurisdiction within the review area (complete table in Section II.D).

**B. Rivers and Harbors Act of 1899 Section 10 (§ 10)<sup>2</sup>**

§ 10 Name	§ 10 Size	§ 10 Criteria	Rationale for § 10 Determination
N/A.	N/A.	N/A.	N/A.

**C. Clean Water Act Section 404**

Territorial Seas and Traditional Navigable Waters ((a)(1) waters): <sup>3</sup>				
(a)(1) Name	(a)(1) Size	(a)(1) Criteria	Rationale for (a)(1) Determination	
N/A.	N/A.	N/A.	N/A.	

Tributaries ((a)(2) waters):				
(a)(2) Name	(a)(2) Size	(a)(2) Criteria	Rationale for (a)(2) Determination	
N/A.	N/A.	N/A.	N/A.	

Lakes and ponds, and impoundments of jurisdictional waters ((a)(3) waters):				
(a)(3) Name	(a)(3) Size	(a)(3) Criteria	Rationale for (a)(3) Determination	
N/A.	N/A.	N/A.	N/A.	

Adjacent wetlands ((a)(4) waters):				
(a)(4) Name	(a)(4) Size	(a)(4) Criteria	Rationale for (a)(4) Determination	
N/A.	N/A.	N/A.	N/A.	

<sup>1</sup> Map(s)/figure(s) are attached to the AJD provided to the requestor.

<sup>2</sup> If the navigable water is not subject to the ebb and flow of the tide or included on the District's list of Rivers and Harbors Act Section 10 navigable waters list, do NOT use this document to make the determination. The District must continue to follow the procedure outlined in 33 CFR part 329.14 to make a Rivers and Harbors Act Section 10 navigability determination.

<sup>3</sup> A stand-alone TNW determination is completed independently of a request for an AJD. A stand-alone TNW determination is conducted for a specific segment of river or stream or other type of waterbody, such as a lake, where upstream or downstream limits or lake borders are established. A stand-alone TNW determination should be completed following applicable guidance and should NOT be documented on the AJD Form.



**U.S. ARMY CORPS OF ENGINEERS  
REGULATORY PROGRAM  
APPROVED JURISDICTIONAL DETERMINATION FORM (INTERIM)  
NAVIGABLE WATERS PROTECTION RULE**

**D. Excluded Waters or Features**

Excluded waters ((b)(1) – (b)(12)): <sup>4</sup>				
Exclusion Name	Exclusion Size		Exclusion <sup>5</sup>	Rationale for Exclusion Determination
1-W	0.5	acre(s)	(b)(1) Non-adjacent wetland.	The subject water does not meet the definition of “adjacent wetlands”. A review of available resources confirmed the wetland investigated is located within an enclosed depression that has no surface water connections to intermittent or perennial tributaries. The investigated wetland is physically removed from the nearest A(1)-A(3) water, and there is no evidence that it is directly abutting an A(1) – A(3) water. The investigated wetland was determined to be hydrologically isolated and is therefore not regulated by the Corps under Section 404 of the Clean Water Act.

**III. SUPPORTING INFORMATION**

**A. Select/enter all resources** that were used to aid in this determination and attach data/maps to this document and/or references/citations in the administrative record, as appropriate.

- ☒ Information submitted by, or on behalf of, the applicant/consultant: [Project-related materials submitted by consultant 15 July 2020.](#)

This information [is](#) sufficient for purposes of this AJD.

Rationale: [N/A](#)

- ☐ Data sheets prepared by the Corps: [Title\(s\) and/or date\(s\).](#)
- ☒ Photographs: [Other: Site photos in May 2018 Wetland Delineation Report](#)
- ☐ Corps site visit(s) conducted on: [Date\(s\).](#)
- ☐ Previous Jurisdictional Determinations (AJDs or PJDs): [ORM Number\(s\) and date\(s\).](#)
- ☐ Antecedent Precipitation Tool: [provide detailed discussion in Section III.B.](#)
- ☒ USDA NRCS Soil Survey: [NRCS Web Soil Survey](#)
- ☒ USFWS NWI maps: [Wetlands Mapper 3 August 2020](#)
- ☒ USGS topographic maps: [1:24K Hallie](#)

**Other data sources used to aid in this determination:**

Data Source (select)	Name and/or date and other relevant information
<a href="#">USGS Sources</a>	<a href="#">N/A.</a>
<a href="#">USDA Sources</a>	<a href="#">N/A.</a>
<a href="#">NOAA Sources</a>	<a href="#">N/A.</a>
<a href="#">USACE Sources</a>	<a href="#">N/A.</a>
<a href="#">State/Local/Tribal Sources</a>	<a href="#">N/A.</a>
<a href="#">Other information (specify)</a>	<a href="#">LiDAR contours – Chippewa County</a>

<sup>4</sup> Some excluded waters, such as (b)(2) and (b)(4), may not be specifically identified on the AJD form unless a requestor specifically asks a Corps district to do so. Corps districts may, in case-by-case instances, choose to identify some or all of these waters within the review area.

<sup>5</sup> Because of the broad nature of the (b)(1) exclusion and in an effort to collect data on specific types of waters that would be covered by the (b)(1) exclusion, four sub-categories of (b)(1) exclusions were administratively created for the purposes of the AJD Form. These four sub-categories are not new exclusions, but are simply administrative distinctions and remain (b)(1) exclusions as defined by the NWPR.



**U.S. ARMY CORPS OF ENGINEERS  
REGULATORY PROGRAM  
APPROVED JURISDICTIONAL DETERMINATION FORM (INTERIM)  
NAVIGABLE WATERS PROTECTION RULE**

**B. Typical year assessment(s):** [N/A](#)

**C. Additional comments to support AJD:** [No outlets or culverts were identified on the north side of Sundent Road within the project limits. However, a culvert was identified on south side of Sundent Road \(south of project limits\); further investigation of desktop resources available included LiDAR, NWI, WWI, and aerial imagery, which did not support any evidence of a surface water connection to any intermittent or perennial tributary.](#)



## Sundent Road - Project Location Map

Figure 1

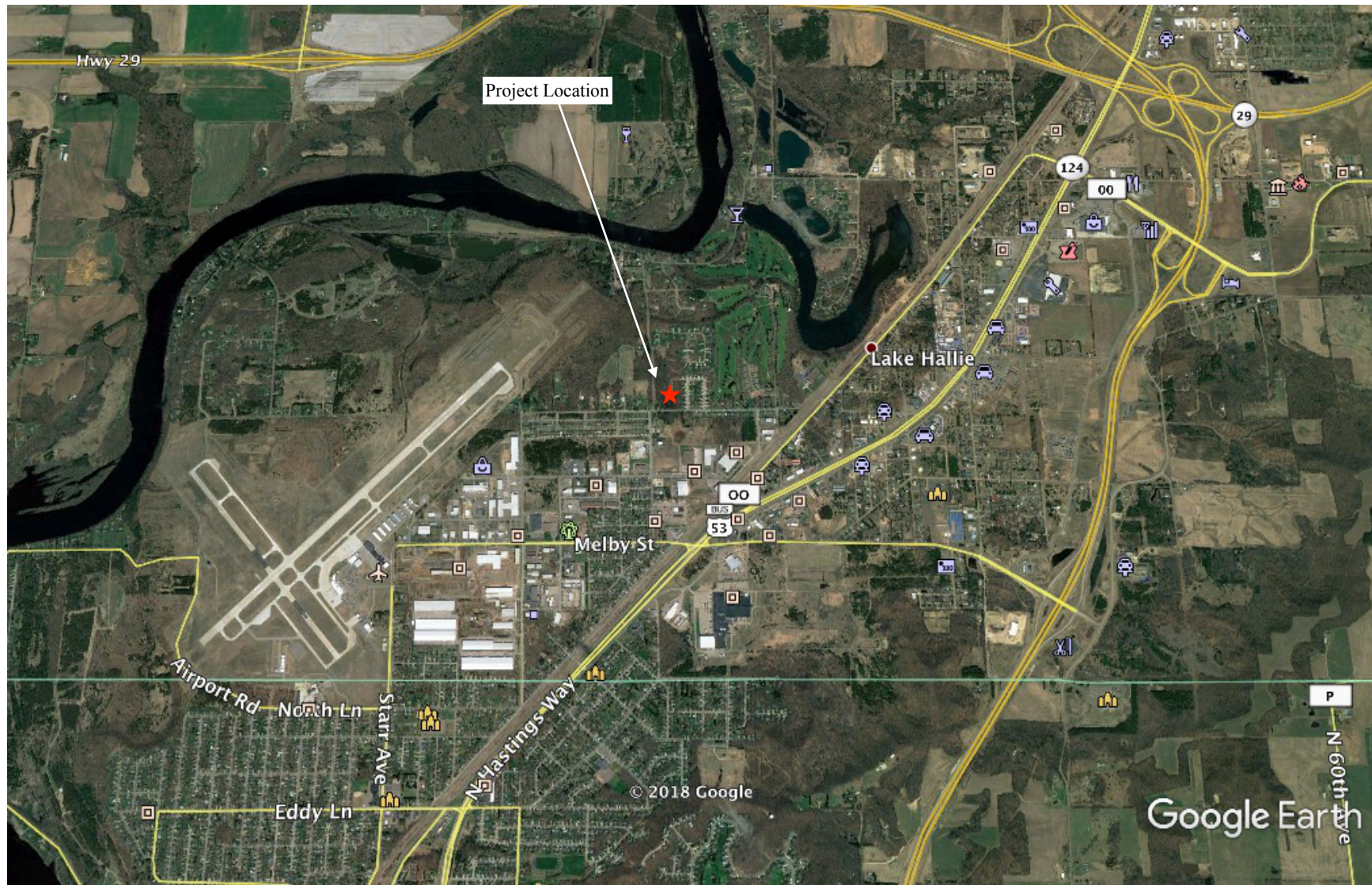


Figure 1



**Figure 2**



PIN: 22809-2743-03500000

Computer Number: 221-0917

Owner Name: CHAD M STEDL

Owner Address: 4930 RUNNING DEER DR

Owner Address: EAU CLAIRE WI, 54703

Physical Address:

GIS Acres: 8.9

Deed Acres: 0.0

School Code: 1554

Assessed Value: 149000

Fair Market Value: 163600

Description: SW SE THE S 25 ACRES EX SUNDET RD ALG S LN & EX CSM #2181

- SEE COMP #1060, #1061 & #1062, EX CSM #2258 - SEE #1063 & EX TH

WOODLANDS PLAT & EX THE WOODLANDS II



Scale = 1"=235'

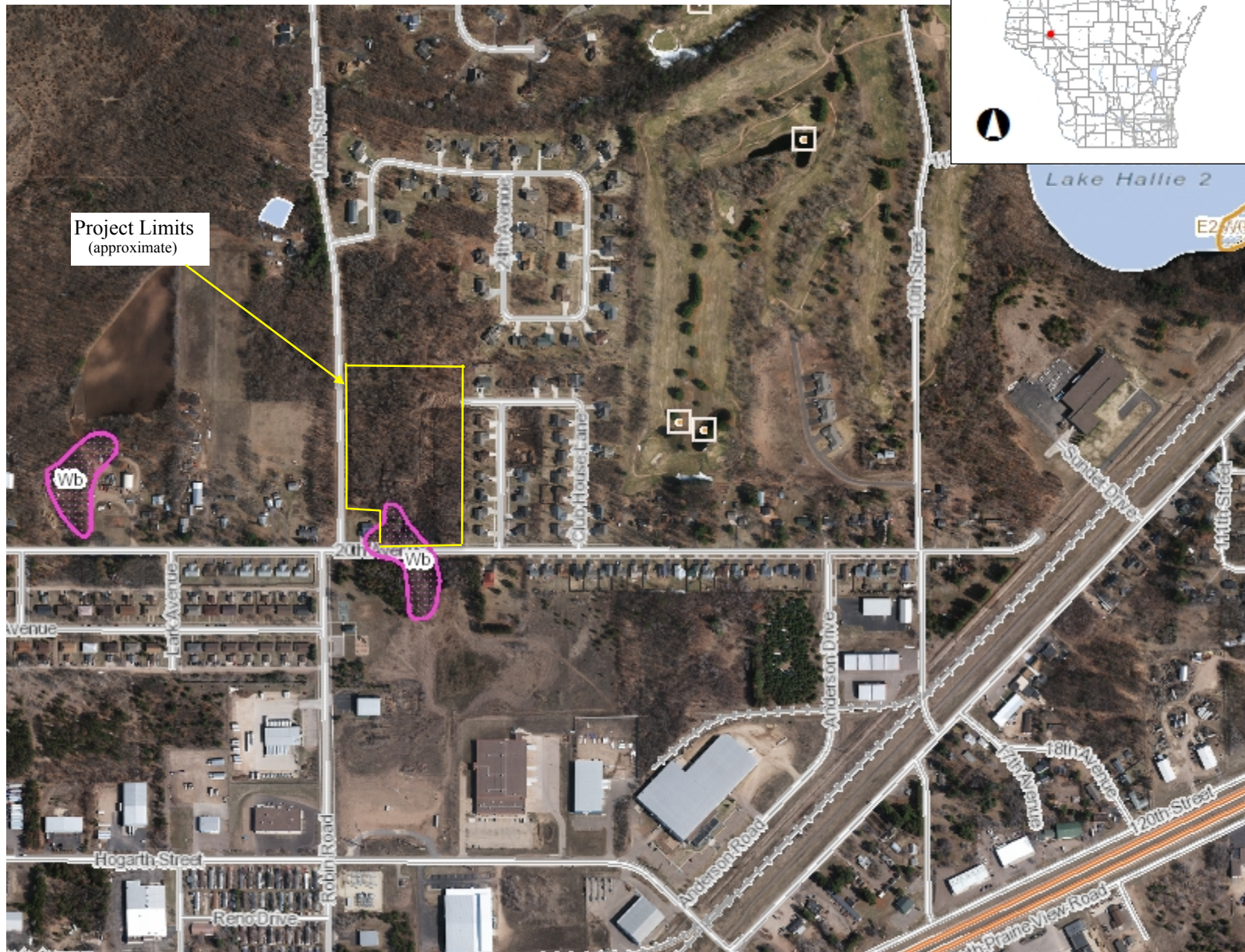
Printed 04/23/2018





# Wetland Map

Figure 3



## Legend

- Wetland Identifications and Confirmations
- Wetland Class Points
  - Dammed pond
  - Excavated pond
  - Filled excavated pond
  - Filled/draind wetland
  - Wetland too small to delineate
- Filled Points
- Wetland Class Areas
  - Wetland
  - Upland
- Filled Areas
- Wetland Class Points
  - Dammed pond
  - Excavated pond
  - Filled excavated pond
  - Filled/draind wetland
  - Wetland too small to delineate
- Filled Points
- Wetland Class Areas
  - Wetland
  - Upland
- Filled Areas
- NRCS Wetspots
- Maximum Extent Wetland Indicators
- Minimum Extent Wetland Indicators
- Municipality
- State Boundaries
- County Boundaries
- Major Roads
  - Interstate Highway
  - State Highway

## Notes

## Figure 3

Chad Stedl Property  
Sundent Rd  
City of Eau Claire  
Chippewa County, WI

0.3 0 0.13 0.3 Miles

NAD\_1983\_HARN\_Wisconsin\_TM

1: 7,920

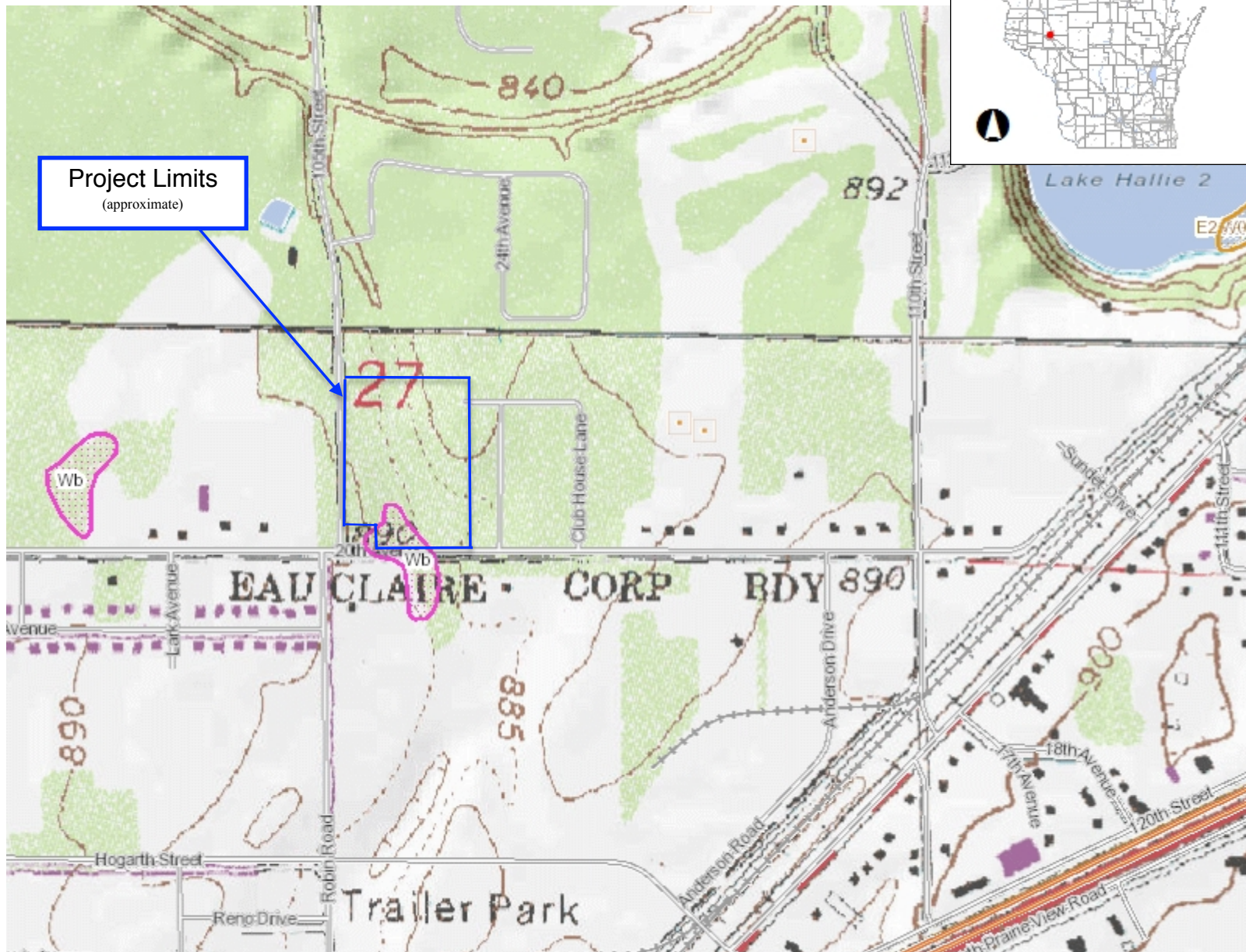
DISCLAIMER: The information shown on these maps has been obtained from various sources, and are of varying age, reliability and resolution. These maps are not intended to be used for navigation, nor are these maps an authoritative source of information regarding legal land ownership or public access. No warranty, expressed or implied, is made regarding accuracy, applicability for a particular use, completeness, or legality of the information depicted on this map. For more information, see the DNR Legal Notices web page: <http://dnr.wi.gov/legal/>





# Topographic Map

Figure 4



## Legend

- Wetland Identifications and Confirmations
- Wetland Class Points
  - Dammed pond
  - Excavated pond
  - Filled excavated pond
  - Filled/draind wetland
  - Wetland too small to delineate
- Filled Points
- Wetland Class Areas
  - Wetland
  - Upland
- Filled Areas
- Wetland Class Points
  - Dammed pond
  - Excavated pond
  - Filled excavated pond
  - Filled/draind wetland
  - Wetland too small to delineate
- Filled Points
- Wetland Class Areas
  - Wetland
  - Upland
- Filled Areas
- NRCS Wetspots
- Maximum Extent Wetland Indicators
- Minimum Extent Wetland Indicators
- Municipality
- State Boundaries
- County Boundaries
- Major Roads
  - Interstate Highway
  - State Highway

## Notes

## Figure 4

Chad Stedl Property  
Sundent Rd  
City of Eau Claire  
Chippewa County, WI

0.3 0 0.13 0.3 Miles

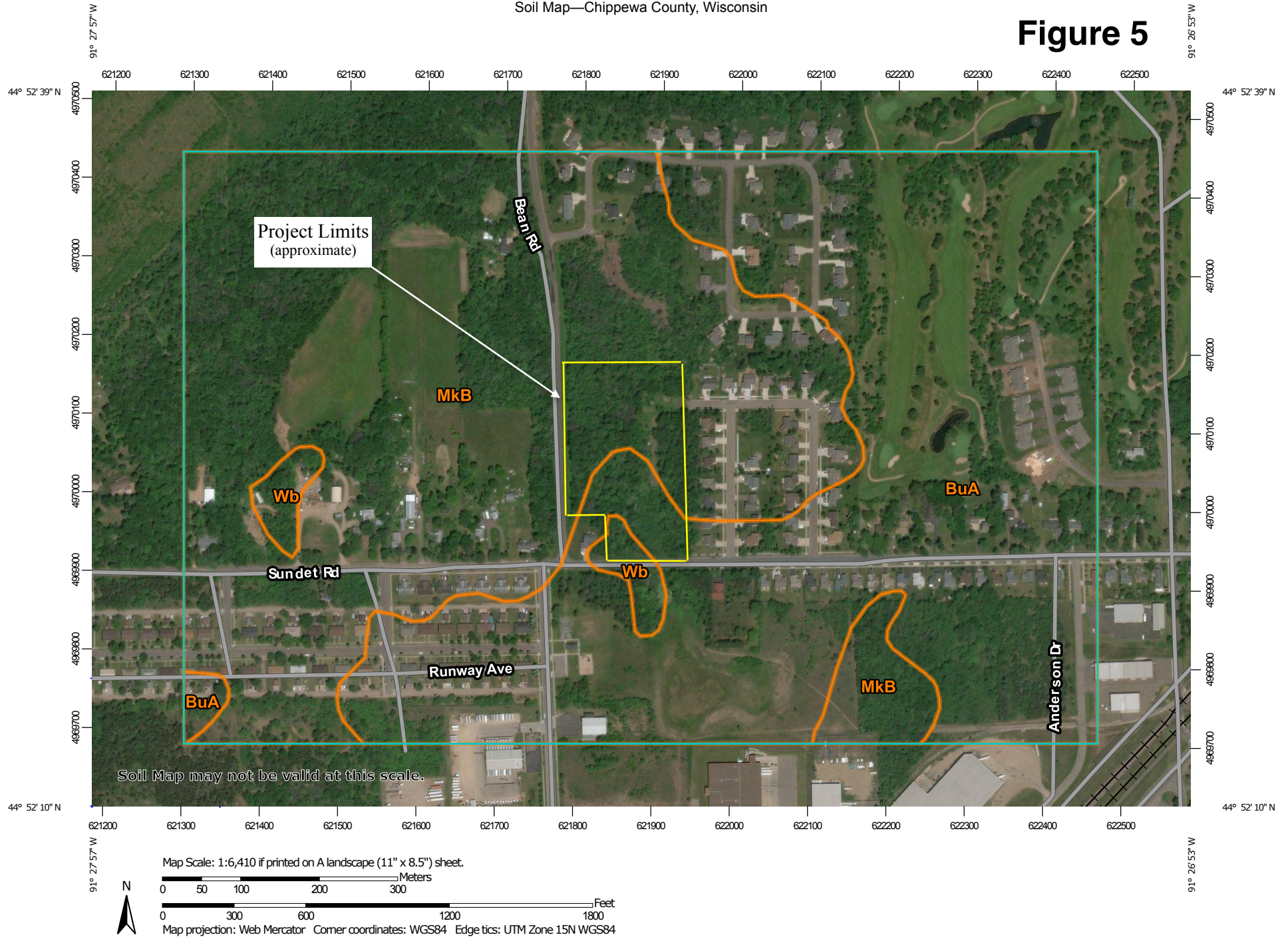
NAD\_1983\_HARN\_Wisconsin\_TM

1: 7,920

DISCLAIMER: The information shown on these maps has been obtained from various sources, and are of varying age, reliability and resolution. These maps are not intended to be used for navigation, nor are these maps an authoritative source of information about legal land ownership or public access. No warranty, expressed or implied, is made regarding accuracy, applicability for a particular use, completeness, or legality of the information depicted on this map. For more information, see the DNR Legal Notices web page: <http://dnr.wi.gov/legal/>



**Figure 5**





Sundent Road Subdivision Wetland Boundary Map

Figure 7

