



DEPARTMENT OF THE ARMY
U.S. ARMY CORPS OF ENGINEERS, ST. PAUL DISTRICT
332 MINNESOTA STREET, SUITE E1500
ST. PAUL, MN 55101-1323

October 6, 2023

Regulatory File No. MVP-2023-00418-CJB

[REDACTED]
[REDACTED]
[REDACTED]
[REDACTED]
[REDACTED]:

This letter regards an approved jurisdictional determination for property located at 1401 Arbor Way, Kaukauna, in Section 11, Township 21 North, Range 18 East, Outagamie County, Wisconsin. The review area for our jurisdictional determination is identified on the enclosed figure labeled 2023-00418-CJB Figure 2.

The review area contains no waters of the United States subject to Corps of Engineers (Corps) jurisdiction. Therefore, you are not required to obtain Department of the Army authorization to discharge dredged or fill material within this area. The rationale for this determination is provided in the enclosed Approved Jurisdictional Determination Memorandum for Record (MFR). You are also cautioned that the area of waters described on the enclosed Jurisdictional Determination form is approximate and is not based on a precise delineation of aquatic resources.

This determination is only valid for the review area shown on the enclosed figure labeled 2023-00418-CJB Figure 2.

The delineation included herein has been conducted to identify the location and extent of the aquatic resources for purposes of the Clean Water Act for the particular site identified in this request. This delineation may not be valid for the Wetland Conservation Provisions of the Food Security Act of 1985, as amended. If you or your tenant are USDA program participants, or anticipate participation in USDA programs, you should discuss the applicability of an NRCS Certified Wetland Determination with the local USDA service center, prior to starting work.

If you object to this approved jurisdictional determination, you may request an administrative appeal under Corps regulations at 33 CFR 331. Enclosed you will find a Notification of Appeal Process (NAP) fact sheet and Request for Appeal (RFA) form. If you request to appeal this determination, you must submit a completed RFA form to the Mississippi Valley Division Office at the address shown on the form.

In order for an RFA to be accepted by the Corps, the Corps must determine that it is complete, that it meets the criteria for appeal under 33 CFR 331.5, and that it has been received by the Division Office within 60 days of the date of the enclosed NAP.

It is not necessary to submit an RFA form to the division office if you do not object to the determination in this letter.

This approved jurisdictional determination may be relied upon for five years from the date of this letter. However, the Corps reserves the right to review and revise the determination in response to changing site conditions, information that was not considered during our initial review, or off-site activities that could indirectly alter the extent of wetlands and other resources on-site. This determination may be renewed at the end of the five year period provided you submit a written request and our staff are able to verify that the limits established during the original determination are still accurate.

If you have any questions, please contact me in our Green Bay office at (920) 572-6709 or Cameron.J.Brock@usace.army.mil. In any correspondence or inquiries, please refer to the Regulatory file number shown above.

Sincerely,

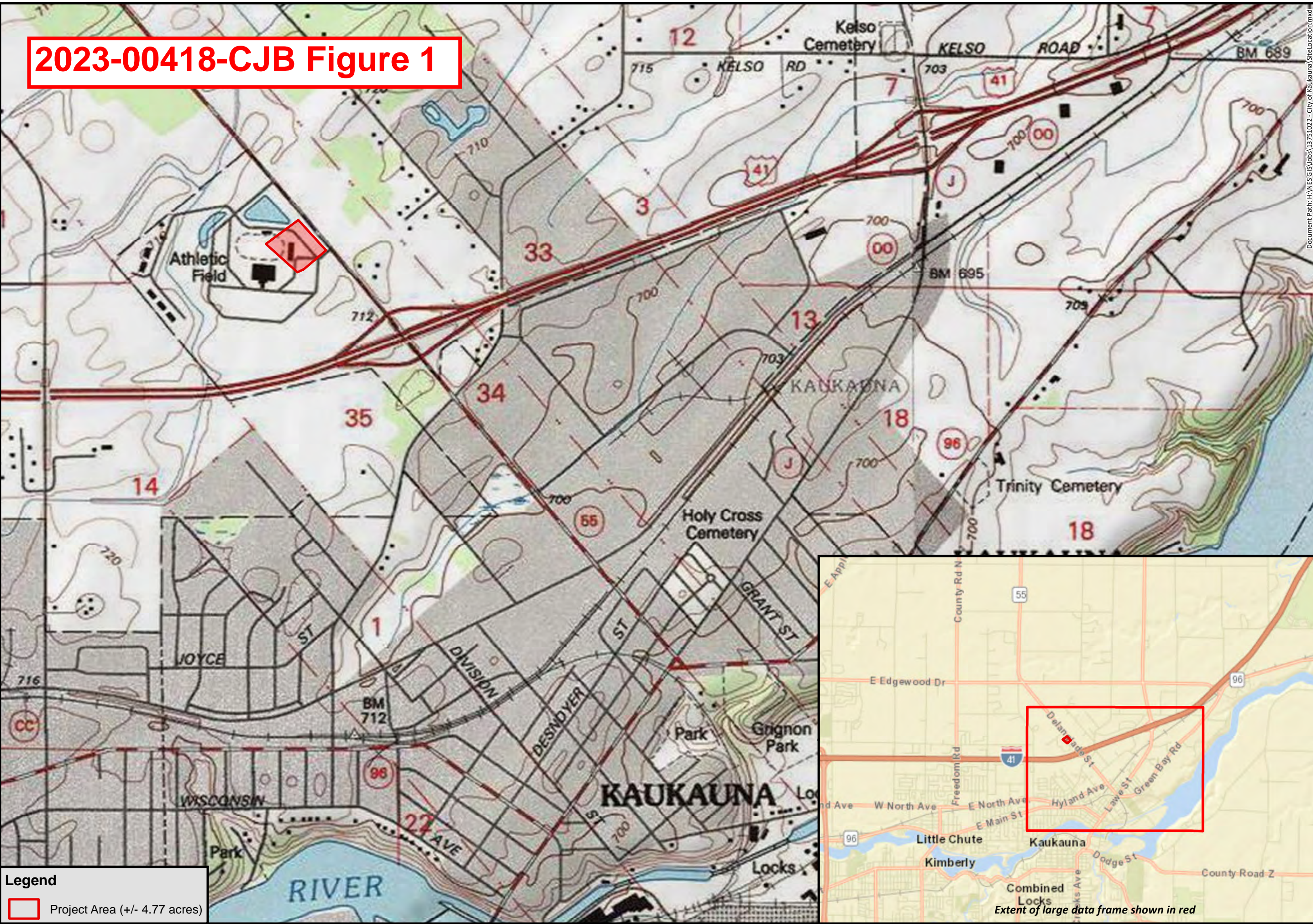
A handwritten signature in black ink, consisting of the letters 'CB' followed by a horizontal line.

Cam Brock
WI East Branch Regulatory Specialist

Enclosures

cc: [REDACTED]

2023-00418-CJB Figure 1



Legend

Project Area (+/- 4.77 acres)

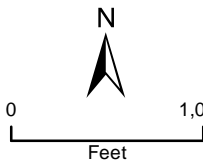


Site
Location

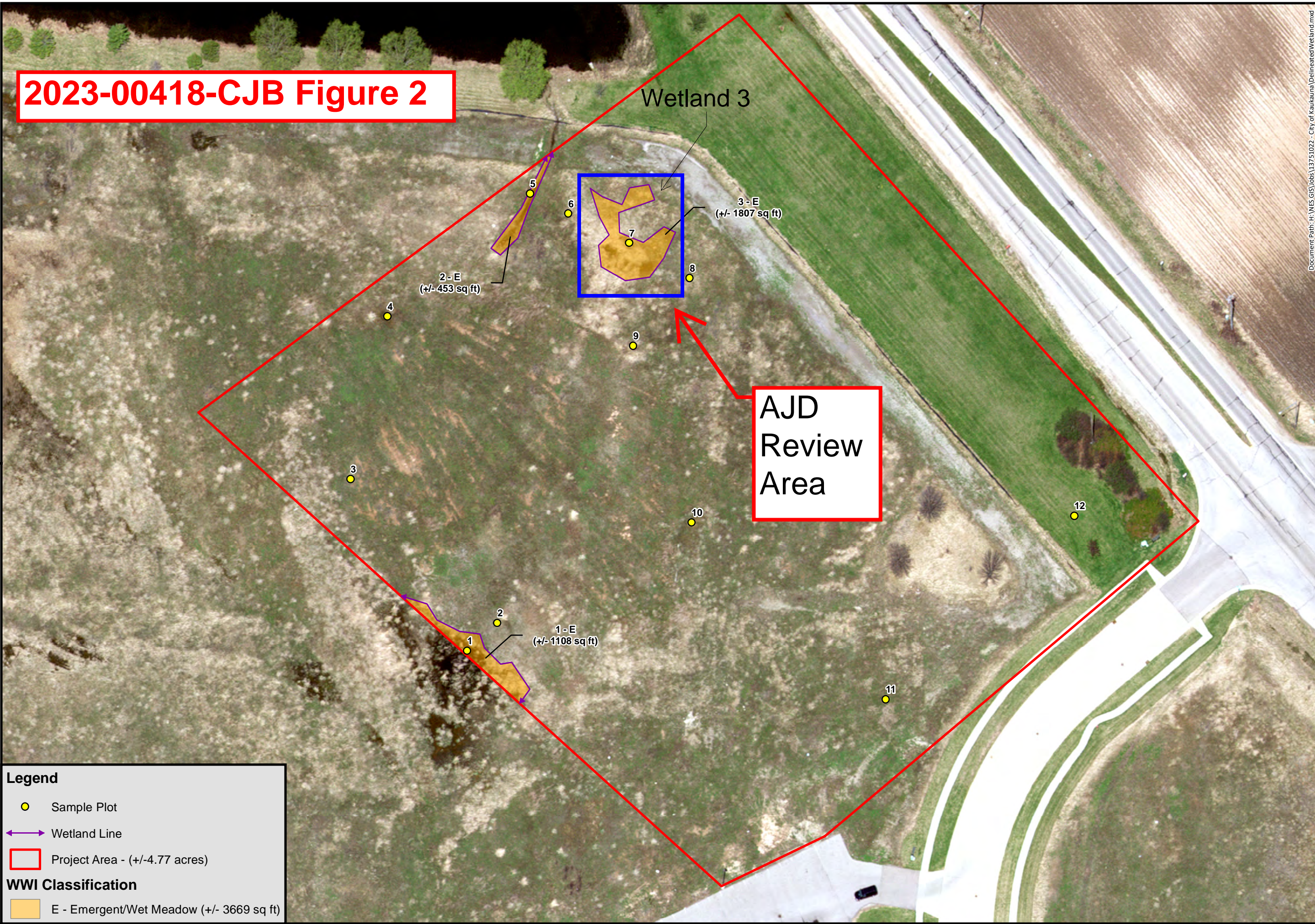
5/1/2018

City of Kaukauna
Wetland Delineation
NES Project No. 13751022
City of Kaukauna
Outagamie County, Wisconsin

Located in part of:
Section 11, T21N, R18E
City of Kaukauna
Outagamie County
Wisconsin



2023-00418-CJB Figure 2



Legend

- Sample Plot
- Wetland Line
- Project Area - (+/-4.77 acres)

WWI Classification

- E - Emergent/Wet Meadow (+/- 3669 sq ft)

Document Path: H:\NES GIS\Jobs\13751022 - City of Kaukauna\DelineatedWetland.mxd

Delineated Wetland

5/1/2018

City of Kaukauna
Wetland Delineation
NES Project No. 13751022
City of Kaukauna
Outagamie County, Wisconsin

Sources: Robert E. Lee & Associates, Inc., Outagamie County

Disclaimer: Robert E. Lee & Associates, Inc. makes every effort to ensure this map is free of errors but does not warrant the map or its features are either spatially or temporally accurate or fit for a particular use. Robert E. Lee & Associates, Inc. provides this map without any warranty of any kind whatsoever, either expressed or implied.

0 60 Feet