



DEPARTMENT OF THE ARMY  
U.S. ARMY CORPS OF ENGINEERS, ST. PAUL DISTRICT  
332 MINNESOTA STREET, SUITE E1500  
ST. PAUL, MN 55101-1323

CE-MVP-RD

16 APRIL 2024

MEMORANDUM FOR RECORD

SUBJECT: US Army Corps of Engineers (Corps) Approved Jurisdictional Determination in accordance with the "Revised Definition of 'Waters of the United States'"; (88 FR 3004 (January 18, 2023) as amended by the "Revised Definition of 'Waters of the United States'; Conforming" (8 September 2023) ,<sup>1</sup> MVP-2023-00533-CJB, MFR 1 of 1.<sup>2</sup>

BACKGROUND. An Approved Jurisdictional Determination (AJD) is a Corps document stating the presence or absence of waters of the United States on a parcel or a written statement and map identifying the limits of waters of the United States on a parcel. AJDs are clearly designated appealable actions and will include a basis of JD with the document.<sup>3</sup> AJDs are case-specific and are typically made in response to a request. AJDs are valid for a period of five years unless new information warrants revision of the determination before the expiration date or a District Engineer has identified, after public notice and comment, that specific geographic areas with rapidly changing environmental conditions merit re-verification on a more frequent basis.<sup>4</sup>

On January 18, 2023, the Environmental Protection Agency (EPA) and the Department of the Army ("the agencies") published the "Revised Definition of 'Waters of the United States,'" 88 FR 3004 (January 18, 2023) ("2023 Rule"). On September 8, 2023, the agencies published the "Revised Definition of 'Waters of the United States'; Conforming", which amended the 2023 Rule to conform to the 2023 Supreme Court decision in *Sackett v. EPA*, 598 U.S., 143 S. Ct. 1322 (2023) ("*Sackett*").

This Memorandum for Record (MFR) constitutes the basis of jurisdiction for a Corps AJD as defined in 33 CFR §331.2. For the purposes of this AJD, we have relied on Section 10 of the Rivers and Harbors Act of 1899 (RHA),<sup>5</sup> the 2023 Rule as amended,

---

<sup>1</sup> While the Revised Definition of "Waters of the United States"; Conforming had no effect on some categories of waters covered under the CWA, and no effect on any waters covered under RHA, all categories are included in this Memorandum for Record for efficiency.

<sup>2</sup> When documenting aquatic resources within the review area that are jurisdictional under the Clean Water Act (CWA), use an additional MFR and group the aquatic resources on each MFR based on the TNW, the territorial seas, or interstate water that they are connected to. Be sure to provide an identifier to indicate when there are multiple MFRs associated with a single AJD request (i.e., number them 1, 2, 3, etc.).

<sup>3</sup> 33 CFR 331.2.

<sup>4</sup> Regulatory Guidance Letter 05-02.

<sup>5</sup> USACE has authority under both Section 9 and Section 10 of the Rivers and Harbors Act of 1899 but for convenience, in this MFR, jurisdiction under RHA will be referred to as Section 10.

as well as other applicable guidance, relevant case law, and longstanding practice in evaluating jurisdiction.

1. SUMMARY OF CONCLUSIONS.

- a. Provide a list of each individual feature within the review area and the jurisdictional status of each one (i.e., identify whether each feature is/is not a water of the United States and/or a navigable water of the United States).
  - i. Wetland 2 (0.21 acre), non-jurisdictional

2. REFERENCES.

- a. "Revised Definition of 'Waters of the United States,'" 88 FR 3004 (January 18, 2023) ("2023 Rule")
- b. "Revised Definition of 'Waters of the United States'; Conforming" 88 FR 61964 (September 8, 2023))
- c. *Sackett v. EPA*, 598 U.S. \_\_, 143 S. Ct. 1322 (2023)

3. REVIEW AREA. The review area is approximately 0.50 acre in size and is identified by the green rectangle on the attached figure labeled 2023-00533-CJB Figure 2. The center of the review area is located at 44.19430 N, -88.53289 W, in the Town of Clayton, Winnebago County, Wisconsin. There are no other JDs associated with the review area.

4. NEAREST TRADITIONAL NAVIGABLE WATER (TNW), THE TERRITORIAL SEAS, OR INTERSTATE WATER TO WHICH THE AQUATIC RESOURCE IS CONNECTED. N/A<sup>6</sup>

5. FLOWPATH FROM THE SUBJECT AQUATIC RESOURCES TO A TNW, THE TERRITORIAL SEAS, OR INTERSTATE WATER. N/A

---

<sup>6</sup> This MFR should not be used to complete a new stand-alone TNW determination. A stand-alone TNW determination for a water that is not subject to Section 9 or 10 of the Rivers and Harbors Act of 1899 (RHA) is completed independently of a request for an AJD. A stand-alone TNW determination is conducted for a specific segment of river or stream or other type of waterbody, such as a lake, where upstream or downstream limits or lake borders are established.

6. SECTION 10 JURISDICTIONAL WATERS<sup>7</sup>: Describe aquatic resources or other features within the review area determined to be jurisdictional in accordance with Section 10 of the Rivers and Harbors Act of 1899. Include the size of each aquatic resource or other feature within the review area and how it was determined to be jurisdictional in accordance with Section 10.<sup>8</sup> N/A
7. SECTION 404 JURISDICTIONAL WATERS: Describe the aquatic resources within the review area that were found to meet the definition of waters of the United States in accordance with the 2023 Rule as amended, consistent with the Supreme Court's decision in *Sackett*. List each aquatic resource separately, by name, consistent with the naming convention used in section 1, above. Include a rationale for each aquatic resource, supporting that the aquatic resource meets the relevant category of "waters of the United States" in the 2023 Rule as amended. The rationale should also include a written description of, or reference to a map in the administrative record that shows, the lateral limits of jurisdiction for each aquatic resource, including how that limit was determined, and incorporate relevant references used. Include the size of each aquatic resource in acres or linear feet and attach and reference related figures as needed.
  - a. Traditional Navigable Waters (TNWs) (a)(1)(i): N/A
  - b. The Territorial Seas (a)(1)(ii): N/A
  - c. Interstate Waters (a)(1)(iii): N/A
  - d. Impoundments (a)(2): N/A
  - e. Tributaries (a)(3): N/A
  - f. Additional Waters (a)(5): N/A

## 8. NON-JURISDICTIONAL AQUATIC RESOURCES AND FEATURES

---

<sup>7</sup> 33 CFR 329.9(a) A waterbody which was navigable in its natural or improved state, or which was susceptible of reasonable improvement (as discussed in § 329.8(b) of this part) retains its character as "navigable in law" even though it is not presently used for commerce, or is presently incapable of such use because of changed conditions or the presence of obstructions.

<sup>8</sup> This MFR is not to be used to make a report of findings to support a determination that the water is a navigable water of the United States. The district must follow the procedures outlined in 33 CFR part 329.14 to make a determination that water is a navigable water of the United States subject to Section 10 of the RHA.

- a. Describe aquatic resources and other features within the review area identified in the 2023 Rule as amended as not “waters of the United States” even where they otherwise meet the terms of paragraphs (a)(2) through (5). Include the type of excluded aquatic resource or feature, the size of the aquatic resource or feature within the review area and describe how it was determined to meet one of the exclusions listed in 33 CFR 328.3(b).<sup>9</sup> N/A
- b. Describe aquatic resources and features within the review area that were determined to be non-jurisdictional because they do not meet one or more categories of waters of the United States under the 2023 Rule as amended (e.g., tributaries that are non-relatively permanent waters; non-tidal wetlands that do not have a continuous surface connection to a jurisdictional water).

Based on review of the delineated wetland boundaries and landscape position depicted in aerial imagery, Wetland 2 is situated within an area that has been historically used for row crop agriculture and is not a TNW, territorial sea, or interstate water; therefore, Wetland 2 is not a category (a)(1) water. Current and historic aerial photos indicate this wetland is not a tributary and was not created by impounding a water of the U.S.; therefore, Wetland 2 is not a category (a)(2) or (a)(3) water. Based on review of the wetland delineation report, Wetland 2 does not directly abut a jurisdictional water identified in paragraph (a)(1), (a)(2), or (a)(3), of the conforming rule and is not separated from a jurisdictional water by a natural berm, bank, dune, or similar natural landform. The review area is located approximately 100 feet to the north of the closest tributary (unnamed to Little Lake Butte Des Morts) so Wetland 2 was reviewed for a possible hydrologic connection to this tributary. Review of LiDAR and aerial photos does not indicate a discrete feature that would provide a continuous surface connection to the unnamed tributary to the south or to any other aquatic resource.

Wetland 2 is a non-tidal wetland that does not have a continuous surface connection to a relatively permanent jurisdictional water and as such does not meet the definition of adjacent and cannot be evaluated as an (a)(4) wetland. Therefore, Wetland 2 is not jurisdictional under the “2023 Revised Definition of ‘Waters of the United States’; Conforming” 88 FR 61964 Final Rule.

9. DATA SOURCES. List sources of data/information used in making determination. Include titles and dates of sources used and ensure that information referenced is available in the administrative record.

---

<sup>9</sup> 88 FR 3004 (January 18, 2023)

CE-MVP-RD

SUBJECT: 2023 Rule, as amended, Approved Jurisdictional Determination in Light of *Sackett v. EPA*, 143 S. Ct. 1322 (2023), MVP-2023-00533-CJB

- a. Wetland Delineation Report, Davel Engineering & Environmental, Inc, dated October 25, 2022
- b. Hillshade and DEM layers derived from LiDAR, USACE National Regulatory Viewer, accessed March 25, 2024
- c. Water Surface Data Viewer, WI DNR, accessed March 25, 2024

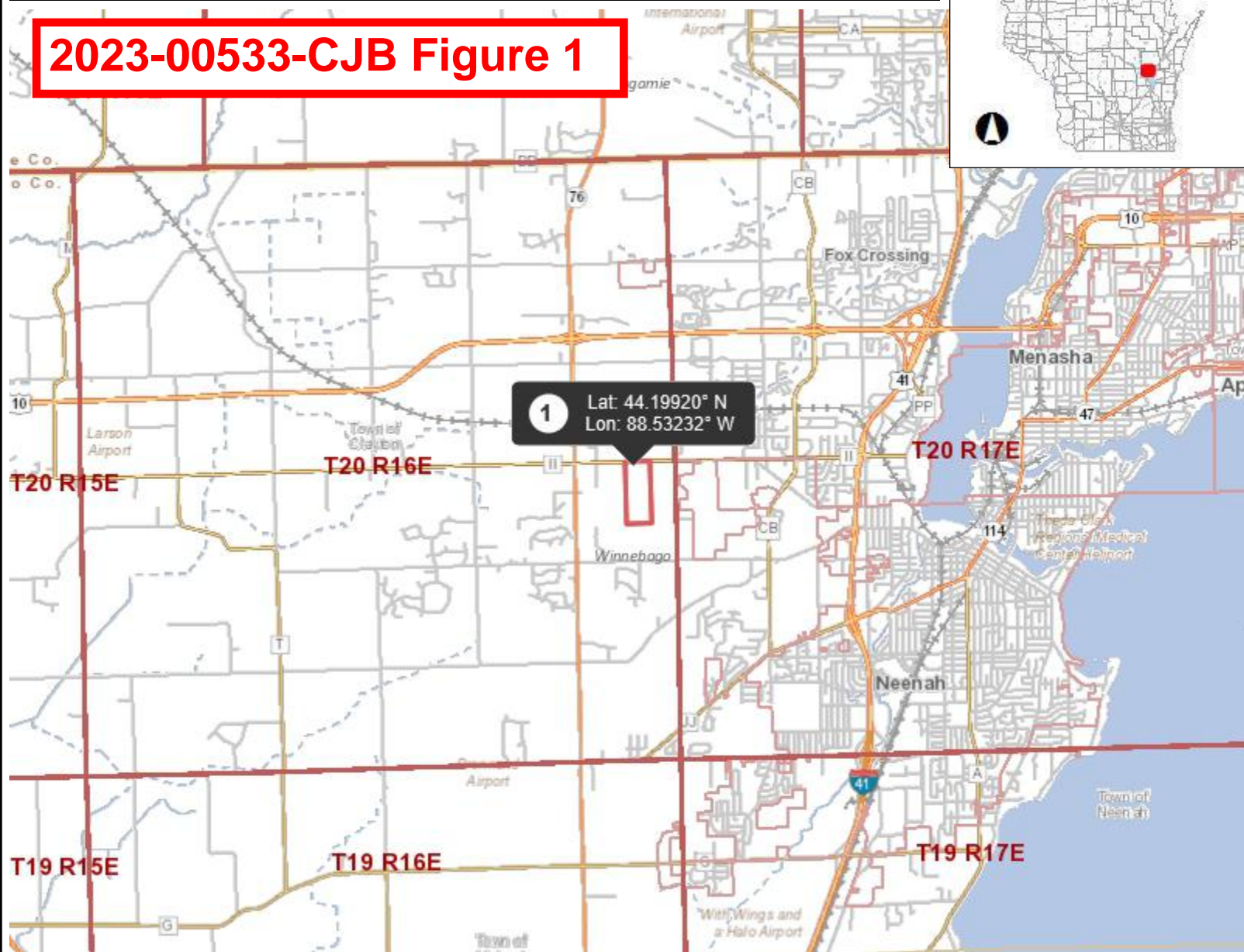
10. OTHER SUPPORTING INFORMATION. N/A

11. NOTE: The structure and format of this MFR were developed in coordination with the EPA and Department of the Army. The MFR's structure and format may be subject to future modification or may be rescinded as needed to implement additional guidance from the agencies; however, the approved jurisdictional determination described herein is a final agency action.



# Surface Water Data Viewer Map

2023-00533-CJB Figure 1



## Legend

- Township
- Section
- County Boundary
- Cities, Towns & Villages
  - City
  - Village
  - Civil Town
- Municipality
- State Boundaries
- County Boundaries
- Major Roads
  - Interstate Highway
  - State Highway
  - US Highway
- County and Local Roads
  - County HWY
  - Local Road
- Railroads
- Tribal Lands
- Rivers and Streams
- Intermittent Streams
- Lakes and Open water

3.0 0 1.50 3.0 Miles

NAD\_1983\_HARN\_Wisconsin\_TM

1: 95,040

DISCLAIMER: The information shown on these maps has been obtained from various sources, and are of varying age, reliability and resolution. These maps are not intended to be used for navigation, nor are these maps an authoritative source of information about legal land ownership or public access. No warranty, expressed or implied, is made regarding accuracy, applicability for a particular use, completeness, or legality of the information depicted on this map. For more information, see the DNR Legal Notices web page: <http://dnr.wi.gov/legal/>

## Notes

# Wetland Delineation Overview Map

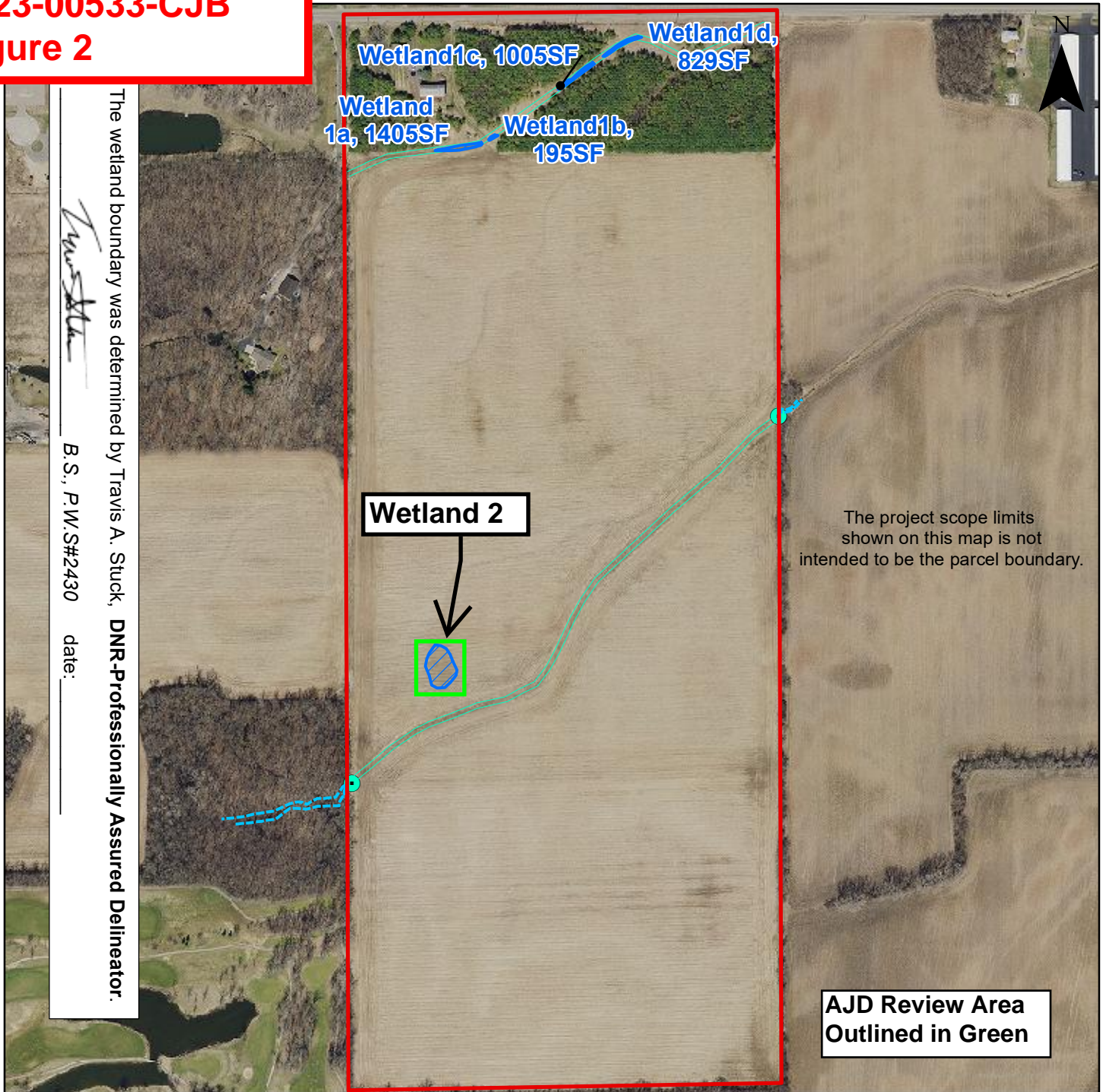
Farrel Land

Part of Sec. 24, T20N, R16E, Town of Clayton, Winnebago County, WI

For: Grounded Property Group, LLC

Spring 2020

**2023-00533-CJB**  
**Figure 2**



0 112.5225 450 675 900 Feet  
1 inch = 450 feet

## Legend

- Project Scope
- Wetland Boundary
- Approximate Offsite Wetland Boundary
- Approximate Tile Location
- Approx Tile Vent



**DAVEL ENGINEERING & ENVIRONMENTAL, INC.**  
Civil Engineers and Land Surveyors  
1164 Province Terrace, Menasha, WI 54952  
Ph: 920-991-1866 Fax: 920-441-0804  
www.davel.pro