

APPROVED JURISDICTIONAL DETERMINATION FORM
U.S. Army Corps of Engineers

This form should be completed by following the instructions provided in Section IV of the JD Form Instructional Guidebook.

SECTION I: BACKGROUND INFORMATION

A. REPORT COMPLETION DATE FOR APPROVED JURISDICTIONAL DETERMINATION (JD): **OCT 06 2017**

B. ST PAUL, MN DISTRICT OFFICE, FILE NAME, AND NUMBER:

MVP-2017-01622-BBY Coon Rapids City Parcels

C. PROJECT LOCATION AND BACKGROUND INFORMATION:

State: **Minnesota** County/parish/borough: **Anoka** City: **Coon Rapids**
Center coordinates of site (lat/long in degree decimal format): Lat. **45.151667° N**, Long. **93.301944° W**.
Universal Transverse Mercator:

Name of nearest waterbody: **Mississippi River**

Name of watershed or Hydrologic Unit Code (HUC): **07010206** **Upper Mississippi Region**

- ☒ Check if map/diagram of review area and/or potential jurisdictional areas is/are available upon request.
☐ Check if other sites (e.g., offsite mitigation sites, disposal sites, etc...) are associated with this action and are recorded on a different JD form.

D. REVIEW PERFORMED FOR SITE EVALUATION (CHECK ALL THAT APPLY):

- ☒ Office (Desk) Determination. Date: **August 3, 2017**
☐ Field Determination. Date(s):

SECTION II: SUMMARY OF FINDINGS

A. RHA SECTION 10 DETERMINATION OF JURISDICTION.

There are no "*navigable waters of the U.S.*" within Rivers and Harbors Act (RHA) jurisdiction (as defined by 33 CFR part 329) in the review area.

B. CWA SECTION 404 DETERMINATION OF JURISDICTION.

There are no "*waters of the U.S.*" within Clean Water Act (CWA) jurisdiction (as defined by 33 CFR part 328) in the review area.

1. Waters of the U.S.: N/A

2. Non-regulated waters/wetlands (check if applicable):¹

- ☒ Potentially jurisdictional waters and/or wetlands were assessed within the review area and determined to be not jurisdictional.
Explain: **The review areas for this AJD includes 4 wetlands labeled as WL1, WL2, WL3 and WL4 on the enclosed figures labeled MVP-2017-01622-BBY Page 1 of 6 through Page 6 of 6. This AJD is only for these 4 wetlands and does not include Coon Creek, which is in the review area. A PJD will be completed for Coon Creek.**

Wetlands WL1, WL2, WL3 and WL4 do not have surface or shallow sub-surface hydrologic connections to any navigable waters or tributaries. The wetlands are surrounded by uplands. We have determined that these are isolated depressions and not considered to be waters of the U.S. WL1 and WL2 continue offsite; however, LIDAR (Figure 2A) indicates that these two wetlands are part of a larger isolated depressional wetland basin. There are no culverts or drainage features within WL1 or WL2. Wetlands WL1, WL2, WL3 and WL4 do not support a link to interstate or foreign commerce because they are not known to be used by interstate or foreign travelers for recreation or other purposes; they do not produce fish or shellfish that could be taken or sold in interstate or foreign commerce; and are not known to be used for industrial purposes by industries in interstate or foreign commerce. These wetlands do not have an ecological connection to other waters within or adjacent to the review area. These waterbodies have been determined to not be jurisdictional under the CWA.

SECTION III: CWA ANALYSIS

A. TNWs AND WETLANDS ADJACENT TO TNWs: N/A

B. CHARACTERISTICS OF TRIBUTARY (THAT IS NOT A TNW) AND ITS ADJACENT WETLANDS (IF ANY): N/A

¹ Supporting documentation is presented in Section III.F.

C. SIGNIFICANT NEXUS DETERMINATION: N/A

D. DETERMINATIONS OF JURISDICTIONAL FINDINGS. THE SUBJECT WATERS/WETLANDS ARE (CHECK ALL THAT APPLY): N/A

E. ISOLATED [INTERSTATE OR INTRA-STATE] WATERS, INCLUDING ISOLATED WETLANDS, THE USE, DEGRADATION OR DESTRUCTION OF WHICH COULD AFFECT INTERSTATE COMMERCE, INCLUDING ANY SUCH WATERS (CHECK ALL THAT APPLY): N/A

F. NON-JURISDICTIONAL WATERS, INCLUDING WETLANDS (CHECK ALL THAT APPLY):

- ☐ If potential wetlands were assessed within the review area, these areas did not meet the criteria in the 1987 Corps of Engineers Wetland Delineation Manual and/or appropriate Regional Supplements.
- ☐ Review area included isolated waters with no substantial nexus to interstate (or foreign) commerce.
 - ☐ Prior to the Jan 2001 Supreme Court decision in "SWANCC," the review area would have been regulated based solely on the "Migratory Bird Rule" (MBR).
- ☐ Waters do not meet the "Significant Nexus" standard, where such a finding is required for jurisdiction. Explain:
- ☐ Other (explain, if not covered above):

Provide acreage estimates for non-jurisdictional waters in the review area, where the sole potential basis of jurisdiction is the MBR factors (i.e., presence of migratory birds, presence of endangered species, use of water for irrigated agriculture), using best professional judgment (check all that apply):

- ☐ Non-wetland waters (i.e., rivers, streams): linear feet width (ft).
- ☐ Lakes/ponds: acres.
- ☐ Other non-wetland waters: acres. List type of aquatic resource: .
- ☐ Wetlands: acres.

Provide acreage estimates for non-jurisdictional waters in the review area that do not meet the "Significant Nexus" standard, where such a finding is required for jurisdiction (check all that apply):

- ☐ Non-wetland waters (i.e., rivers, streams): linear feet, width (ft).
- ☐ Lakes/ponds: acres.
- ☐ Other non-wetland waters: acres. List type of aquatic resource: .
- ☒ Wetlands: Wetland WL1 0.09 acre, Wetland WL2 0.13 acre, Wetland WL3 0.03 acre and Wetland WL4 0.73 acres.

SECTION IV: DATA SOURCES.

A. SUPPORTING DATA. Data reviewed for JD (check all that apply - checked items shall be included in case file and, where checked and requested, appropriately reference sources below):

- ☒ Maps, plans, plots or plat submitted by or on behalf of the applicant/consultant: Kjolhaug
- ☒ Data sheets prepared/submitted by or on behalf of the applicant/consultant.
 - ☒ Office concurs with data sheets/delineation report.
 - ☐ Office does not concur with data sheets/delineation report.
- ☐ Data sheets prepared by the Corps:
- ☐ Corps navigable waters' study:
- ☐ U.S. Geological Survey Hydrologic Atlas:
 - ☐ USGS NHD data.
 - ☐ USGS 8 and 12 digit HUC maps.
- ☐ U.S. Geological Survey map(s). Cite scale & quad name:
- ☒ USDA Natural Resources Conservation Service Soil Survey. Citation: Anoka County Soil Survey
- ☒ National wetlands inventory map(s). Cite name:
- ☐ State/Local wetland inventory map(s):
- ☐ FEMA/FIRM maps:
- ☐ 100-year Floodplain Elevation is: (National Geodetic Vertical Datum of 1929)
- ☒ Photographs: ☒ Aerial (Name & Date): Google Earth 2011, 2012, 2013, 2014, 2015, 2016 and 2017
or ☐ Other (Name & Date):
- ☐ Previous determination(s). File no. and date of response letter:
- ☐ Applicable/supporting case law:
- ☐ Applicable/supporting scientific literature:
- ☒ Other information (please specify): Anoka County LIDAR

B. ADDITIONAL COMMENTS TO SUPPORT JD:

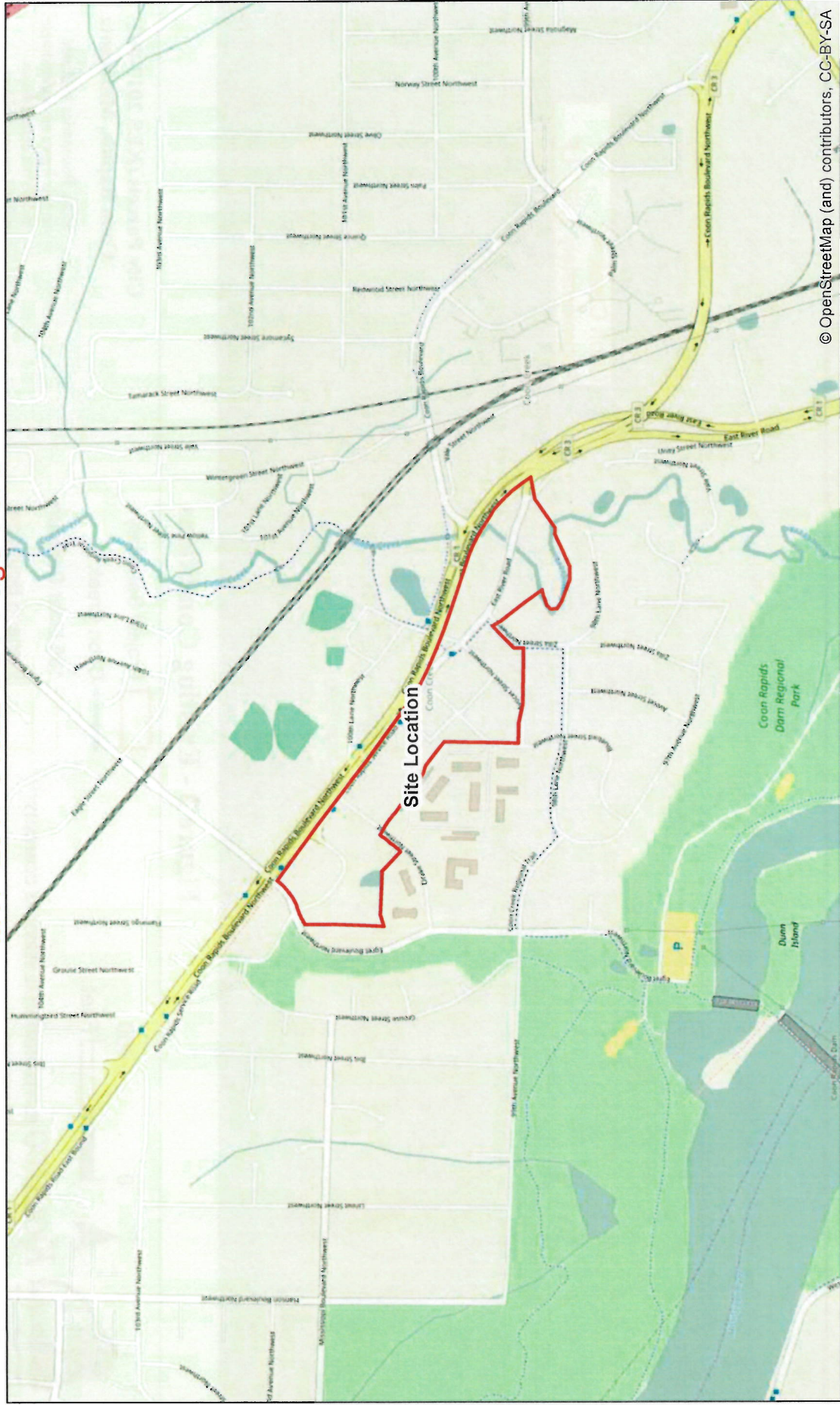
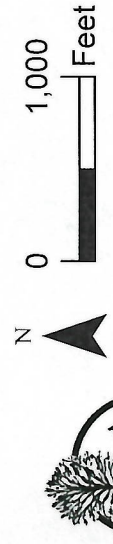


Figure 1 - Site Location



KJOLHAUG ENVIRONMENTAL SERVICES COMPANY
Source: ESRI Streets Basemap

City Parcels (KES 2017-002)
Coon Rapids, Minnesota

Note: Boundaries indicated on this figure are approximate and do not constitute an official survey product.

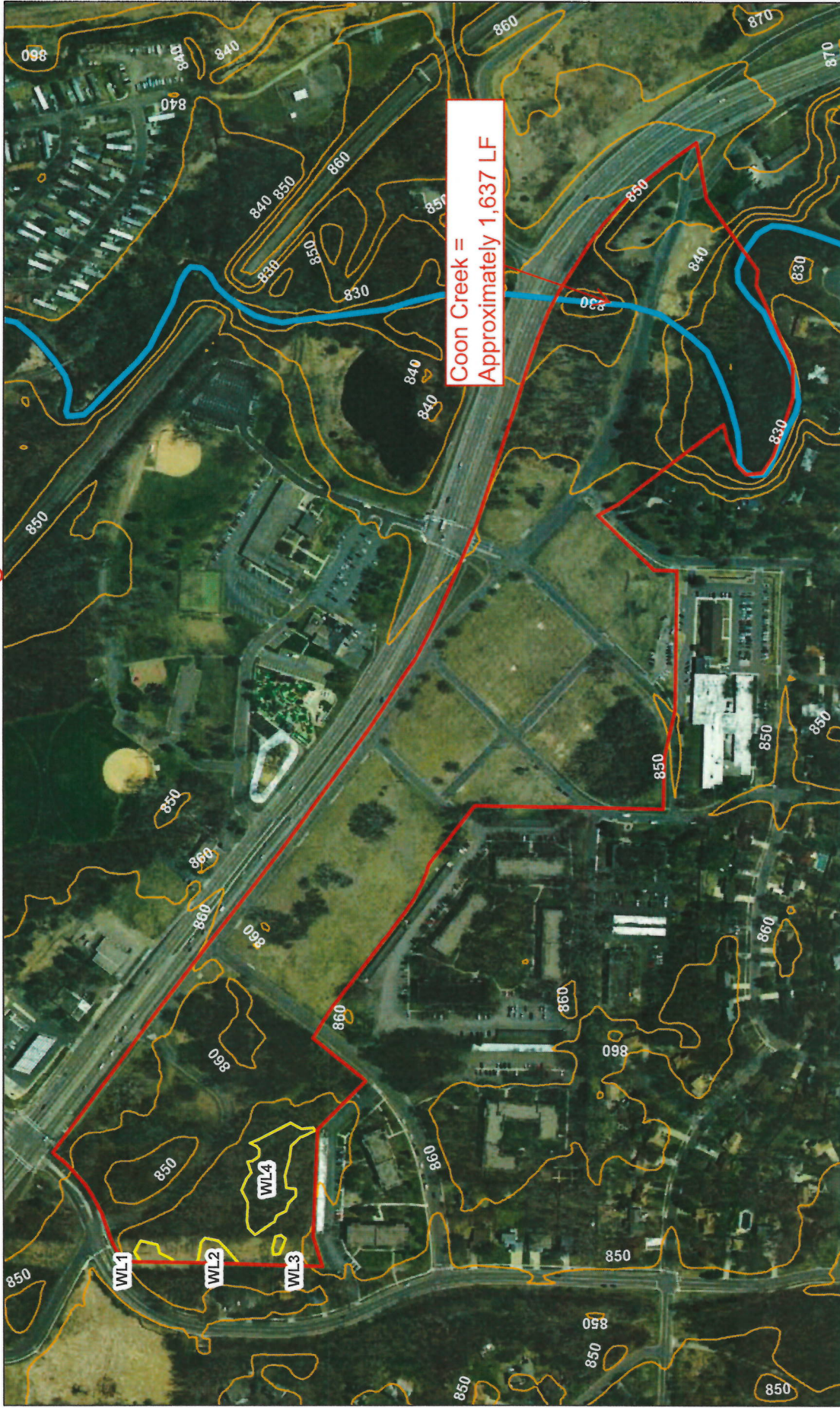
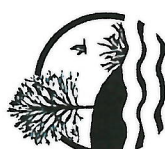




Figure 2 - Existing Conditions




KJOLHAUG ENVIRONMENTAL SERVICES COMPANY
Source: Minnesota DNR (2013)

N





0 400 Feet


Project Boundary




Coon Creek



10ft Lidar Contours



Wetland Boundary




City Parcels (KES 2017-002)
Coon Rapids, Minnesota


Note: Boundaries indicated on this figure are approximate and do not constitute an official survey product.




Revised Figure 2A - Existing Conditions (2016 Metro Photo)




N




0 125 Feet




Project Boundary




Transect



Wetland Boundary



Anoka County Lidar



KJØLHAUG ENVIRONMENTAL SERVICES COMPANY
Source: Minnesota DNR (2013)

City Parcels (KES 2017-002)
Coon Rapids, Minnesota

Note: Boundaries indicated on this figure are approximate and do not constitute an official survey product.