



**DEPARTMENT OF THE ARMY**  
**U.S. ARMY CORPS OF ENGINEERS, ST. PAUL DISTRICT**  
**332 MINNESOTA STREET, SUITE E1500**  
**ST. PAUL, MN 55101-1323**

December 12, 2023

Regulatory File No. MVP-2023-00669-RJH



This letter is in regard to an approved jurisdictional determination for a 25.89-acre property located in Section 12, Township 30 North, Range 23 East, Marinette County, Wisconsin. The review area for our jurisdictional determination is identified on the enclosed Figures labeled MVP-2023-00669-RJH Page 1 of 2 through Page 2 of 2.

The review area contains no waters of the United States subject to Corps of Engineers (Corps) jurisdiction. Therefore, you are not required to obtain Department of the Army authorization to discharge dredged or fill material within this area. The rationale for this determination is provided in the enclosed Approved Jurisdictional Determination form. You are also cautioned that the area of waters described on the enclosed Jurisdictional Determination form is approximate and is not based on a precise delineation of aquatic resources.

If you object to this approved jurisdictional determination, you may request an administrative appeal under Corps regulations at 33 CFR 331. Enclosed you will find a Notification of Appeal Process (NAP) fact sheet and Request for Appeal (RFA) form. If you request to appeal this determination, you must submit a completed RFA form to the Mississippi Valley Division Office at the address shown on the form.

In order for an RFA to be accepted by the Corps, the Corps must determine that it is complete, that it meets the criteria for appeal under 33 CFR 331.5, and that it has been received by the Division Office within 60 days of the date of the enclosed NAP.

It is not necessary to submit an RFA form to the division office if you do not object to the determination in this letter.

This approved jurisdictional determination may be relied upon for five years from the date of this letter. However, the Corps reserves the right to review and revise the determination in response to changing site conditions, information that was not considered during our initial review, or off-site activities that could indirectly alter the extent of wetlands and other resources on-site. This determination may be renewed at the end of the five year period provided you submit a written request and our staff are able to verify that the limits established during the original determination are still accurate.

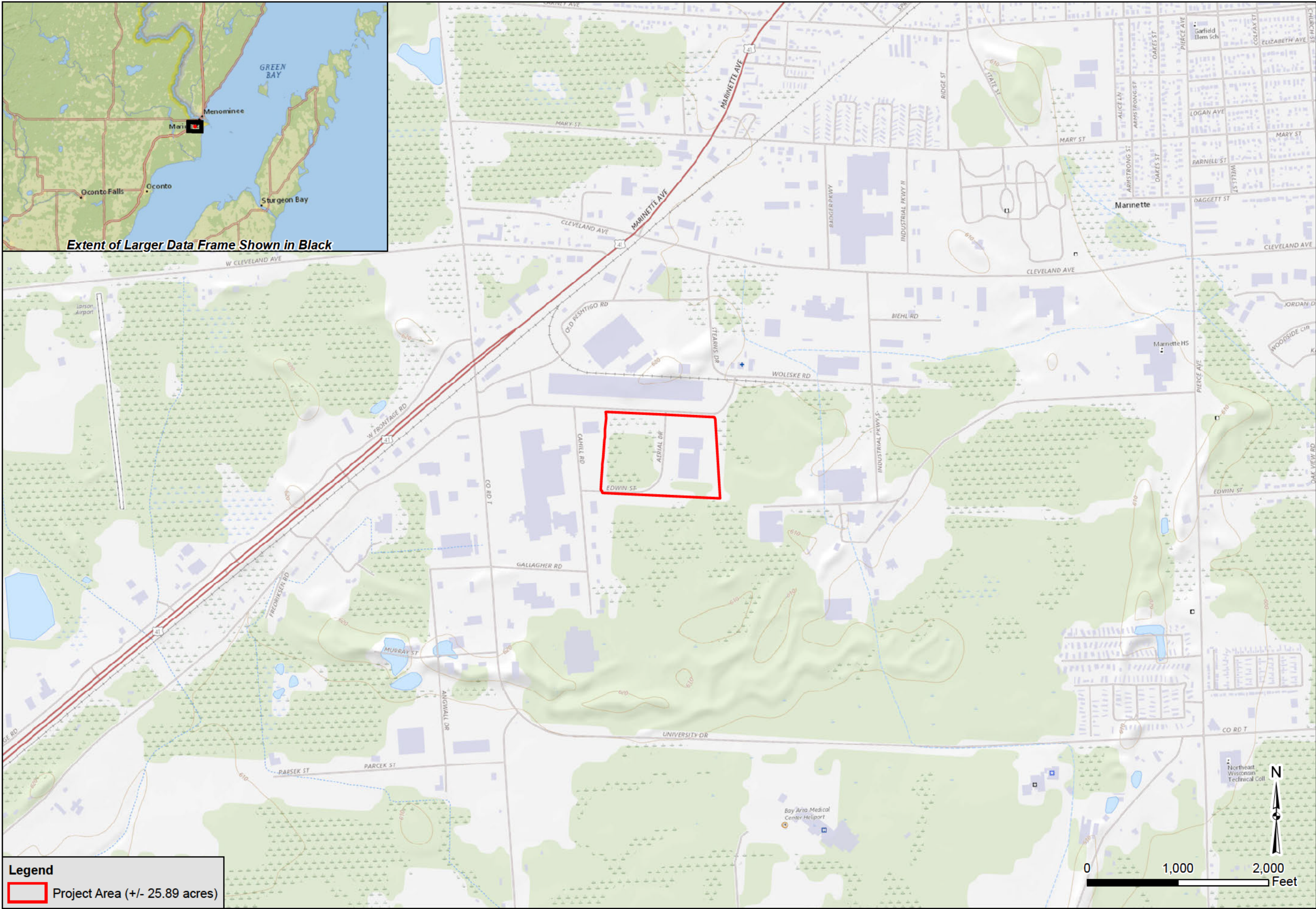
If you have any questions, please contact me in our Green Bay office at [REDACTED] In any correspondence or inquiries, please refer to the Regulatory file number shown above.



Enclosures

cc:  
WDNR  
Mari Olson- GEI Consultants





**FIGURE 1**  
**SITE LOCATION AND USGS TOPOGRAPHIC MAP**  
**KK INTEGRATED LOGISTICS**  
**2300 AERIAL DRIVE**  
**CITY OF MARINETTE**  
**MARINETTE COUNTY, WISCONSIN**

Located in parts of:  
Section 12, T30N, R23E,  
City of Marinette,  
Marinette Co., WI

Drawn: KTB 8/22/2023
Approved: KJU 8/22/2023
Scale: As Shown
Project Number: 2301691
Figure Number: 1



**Legend**

- Project Area (+/- 25.89 acres)
- Ditch
- Swale
- Culverts
- Sample Plots


**Delineated Wetland**

- Wetland Boundary

**WI Wetland Inventory Classification**

- Emergent/Wet Meadow (+/- 67,405 sq. ft.)
- Forested (+/- 18,017 sq. ft.)





**GEI** Consultants

3159 Voyager Drive  
Green Bay, WI 54311  
www.geiconsultants.com

**FIGURE 5**

**WETLAND DELINEATION MAP**

KK INTEGRATED LOGISTICS  
2300 AERIAL DRIVE  
CITY OF MARINETTE  
MARINETTE COUNTY, WISCONSIN

Drawn: MNO 8/23/2023
Approved: KJU 8/23/2023
Scale: As Shown
Project Number: 2301691
Page 1 of 1

Source Credits: 2020 Marinette County Orthophoto