



DEPARTMENT OF THE ARMY
U.S. ARMY CORPS OF ENGINEERS, ST. PAUL DISTRICT
332 MINNESOTA STREET, SUITE E1500
ST. PAUL, MN 55101-1323

MVP

20 September 2023

MEMORANDUM FOR RECORD

SUBJECT: US Army Corps of Engineers (Corps) Approved Jurisdictional Determination in accordance with the "Revised Definition of 'Waters of the United States'"; (88 FR 3004 (January 18, 2023) as amended by the "Revised Definition of 'Waters of the United States'; Conforming" (8 September 2023),¹ [MVP-2023-01156-KDZ MFR 1 of 1](#)

BACKGROUND. An Approved Jurisdictional Determination (AJD) is a Corps document stating the presence or absence of waters of the United States on a parcel or a written statement and map identifying the limits of waters of the United States on a parcel. AJDs are clearly designated appealable actions and will include a basis of JD with the document.² AJDs are case-specific and are typically made in response to a request. AJDs are valid for a period of five years unless new information warrants revision of the determination before the expiration date or a District Engineer has identified, after public notice and comment, that specific geographic areas with rapidly changing environmental conditions merit re-verification on a more frequent basis.³

On January 18, 2023, the Environmental Protection Agency (EPA) and the Department of the Army ("the agencies") published the "Revised Definition of 'Waters of the United States,'" 88 FR 3004 (January 18, 2023) ("2023 Rule"). On September 8, 2023, the agencies published the "Revised Definition of 'Waters of the United States'; Conforming", which amended the 2023 Rule to conform to the 2023 Supreme Court decision in *Sackett v. EPA*, 598 U.S., 143 S. Ct. 1322 (2023) ("*Sackett*").

This Memorandum for Record (MFR) constitutes the basis of jurisdiction for a Corps AJD as defined in 33 CFR §331.2. For the purposes of this AJD, we have relied on Section 10 of the Rivers and Harbors Act of 1899 (RHA),⁴ the 2023 Rule as amended, as well as other applicable guidance, relevant case law, and longstanding practice in evaluating jurisdiction.

1. SUMMARY OF CONCLUSIONS.

¹ While the Revised Definition of "Waters of the United States"; Conforming had no effect on some categories of waters covered under the CWA, and no effect on any waters covered under RHA, all categories are included in this Memorandum for Record for efficiency.

² 33 CFR 331.2.

³ Regulatory Guidance Letter 05-02.

⁴ USACE has authority under both Section 9 and Section 10 of the Rivers and Harbors Act of 1899 but for convenience, in this MFR, jurisdiction under RHA will be referred to as Section 10.

MVP

SUBJECT: 2023 Rule, as amended, Approved Jurisdictional Determination in Light of *Sackett v. EPA*, 143 S. Ct. 1322 (2023), MVP-2023-01156-KDZ, Classic Development Arbor Haven Phase 2

- a. Provide a list of each individual feature within the review area and the jurisdictional status of each one (i.e., identify whether each feature is/is not a water of the United States and/or a navigable water of the United States).
 - i. 0.27 acre ornamental pond, non-jurisdictional
 - ii. Wisconsin Wetland Inventory (WWI) Mapped Wet Spots 1,2, and 3, non-jurisdictional

2. REFERENCES.

- a. "Revised Definition of 'Waters of the United States,'" 88 FR 3004 (January 18, 2023) ("2023 Rule")
- b. "Revised Definition of 'Waters of the United States'; Conforming" 88 FR 61964 (September 8, 2023))
- c. *Sackett v. EPA*, 598 U.S. __, 143 S. Ct. 1322 (2023)

3. REVIEW AREA. The review area is approximately 40 acres in size and is identified by the red polygon on the attached Figure 1. The review area is located at 44.445295 N, -89.496163 W in the Village of Plover, Portage County, Wisconsin. There are no other JDs associated with the review area.

4. NEAREST TRADITIONAL NAVIGABLE WATER (TNW), THE TERRITORIAL SEAS, OR INTERSTATE WATER TO WHICH THE AQUATIC RESOURCE IS CONNECTED. N/A

5. FLOWPATH FROM THE SUBJECT AQUATIC RESOURCES TO A TNW, THE TERRITORIAL SEAS, OR INTERSTATE WATER. N/A

6. SECTION 10 JURISDICTIONAL WATERS⁵: Describe aquatic resources or other features within the review area determined to be jurisdictional in accordance with Section 10 of the Rivers and Harbors Act of 1899. Include the size of each aquatic

⁵ 33 CFR 329.9(a) A waterbody which was navigable in its natural or improved state, or which was susceptible of reasonable improvement (as discussed in § 329.8(b) of this part) retains its character as "navigable in law" even though it is not presently used for commerce, or is presently incapable of such use because of changed conditions or the presence of obstructions.

MVP

SUBJECT: 2023 Rule, as amended, Approved Jurisdictional Determination in Light of *Sackett v. EPA*, 143 S. Ct. 1322 (2023), [MVP-2023-01156-KDZ, Classic Development Arbor Haven Phase 2](#)

resource or other feature within the review area and how it was determined to be jurisdictional in accordance with Section 10.⁶ [N/A](#)

7. SECTION 404 JURISDICTIONAL WATERS: Describe the aquatic resources within the review area that were found to meet the definition of waters of the United States in accordance with the 2023 Rule as amended, consistent with the Supreme Court's decision in *Sackett*. List each aquatic resource separately, by name, consistent with the naming convention used in section 1, above. Include a rationale for each aquatic resource, supporting that the aquatic resource meets the relevant category of "waters of the United States" in the 2023 Rule as amended. The rationale should also include a written description of, or reference to a map in the administrative record that shows, the lateral limits of jurisdiction for each aquatic resource, including how that limit was determined, and incorporate relevant references used. Include the size of each aquatic resource in acres or linear feet and attach and reference related figures as needed.

- a. Traditional Navigable Waters (TNWs) (a)(1)(i): [N/A](#)
- b. The Territorial Seas (a)(1)(ii): [N/A](#)
- c. Interstate Waters (a)(1)(iii): [N/A](#)
- d. Impoundments (a)(2): [N/A](#)
- e. Tributaries (a)(3): [N/A](#)
- f. Adjacent Wetlands (a)(4): [N/A](#)
- g. Additional Waters (a)(5): [N/A](#)

8. NON-JURISDICTIONAL AQUATIC RESOURCES AND FEATURES

- a. Describe aquatic resources and other features within the review area identified in the 2023 Rule as amended as not "waters of the United States" even where they otherwise meet the terms of paragraphs (a)(2) through (5). Include the type of excluded aquatic resource or feature, the size of the aquatic resource or feature

⁶ This MFR is not to be used to make a report of findings to support a determination that the water is a navigable water of the United States. The district must follow the procedures outlined in 33 CFR part 329.14 to make a determination that water is a navigable water of the United States subject to Section 10 of the RHA.

MVP

SUBJECT: 2023 Rule, as amended, Approved Jurisdictional Determination in Light of *Sackett v. EPA*, 143 S. Ct. 1322 (2023), MVP-2023-01156-KDZ, Classic Development Arbor Haven Phase 2

within the review area and describe how it was determined to meet one of the exclusions listed in 33 CFR 328.3(b).⁷ N/A

- b. Describe aquatic resources and features within the review area that were determined to be non-jurisdictional because they do not meet one or more categories of waters of the United States under the 2023 Rule as amended (e.g., tributaries that are non-relatively permanent waters; non-tidal wetlands that do not have a continuous surface connection to a jurisdictional water).

Mapped Wetlands (WL) 1, 2, and 3 are mapped potential wetlands identified by the Wisconsin Wetland Inventory. However, a site visit conducted by the Corps on September 13, 2023, did not reveal any aquatic resources or wetlands at all three locations. All three areas were determined to upland located on abandoned fairways, greens, or sand traps associated with the former golf course on the property. A 0.27 acre ornamental pond was also evaluated by the Corps for jurisdiction during the September 13, 2023, site visit. The pond was constructed in mapped upland soils (Richford loamy sand) between 2000-2002 and used as a borrow pit for sand materials used to construct greens, fairways, and sand traps at the former Tree Acres golf course. Accordingly, the Corps has determined that the 0.27 acre ornamental pond is excluded from Section 404 jurisdiction under (b)(6) of the 2023 Revised Definition of 'Waters of the United States'; Conforming" 88 FR 61964 Final Rule as an artificial reflecting or swimming pools or other small ornamental bodies of water created by excavating or diking dry land to retain water primarily for aesthetic reasons.

9. DATA SOURCES. List sources of data/information used in making determination. Include titles and dates of sources used and ensure that information referenced is available in the administrative record.
 - a. Site visit conducted September 13, 2023, and office evaluation conducted on September 19, 2023.
 - b. Wisconsin Wetland Inventory, USDA Web Soil Survey, USGS NHD, USGS Topographic Maps, WDNR Surface Water Data Viewer, USACE National Regulatory Viewer.
 - c. Google Earth imagery dated 1999, 2010, 2011, 2015, 2018, 2019, 2020, 2021, and 2022. Accessed September 19, 2023.

⁷ 88 FR 3004 (January 18, 2023)

MVP

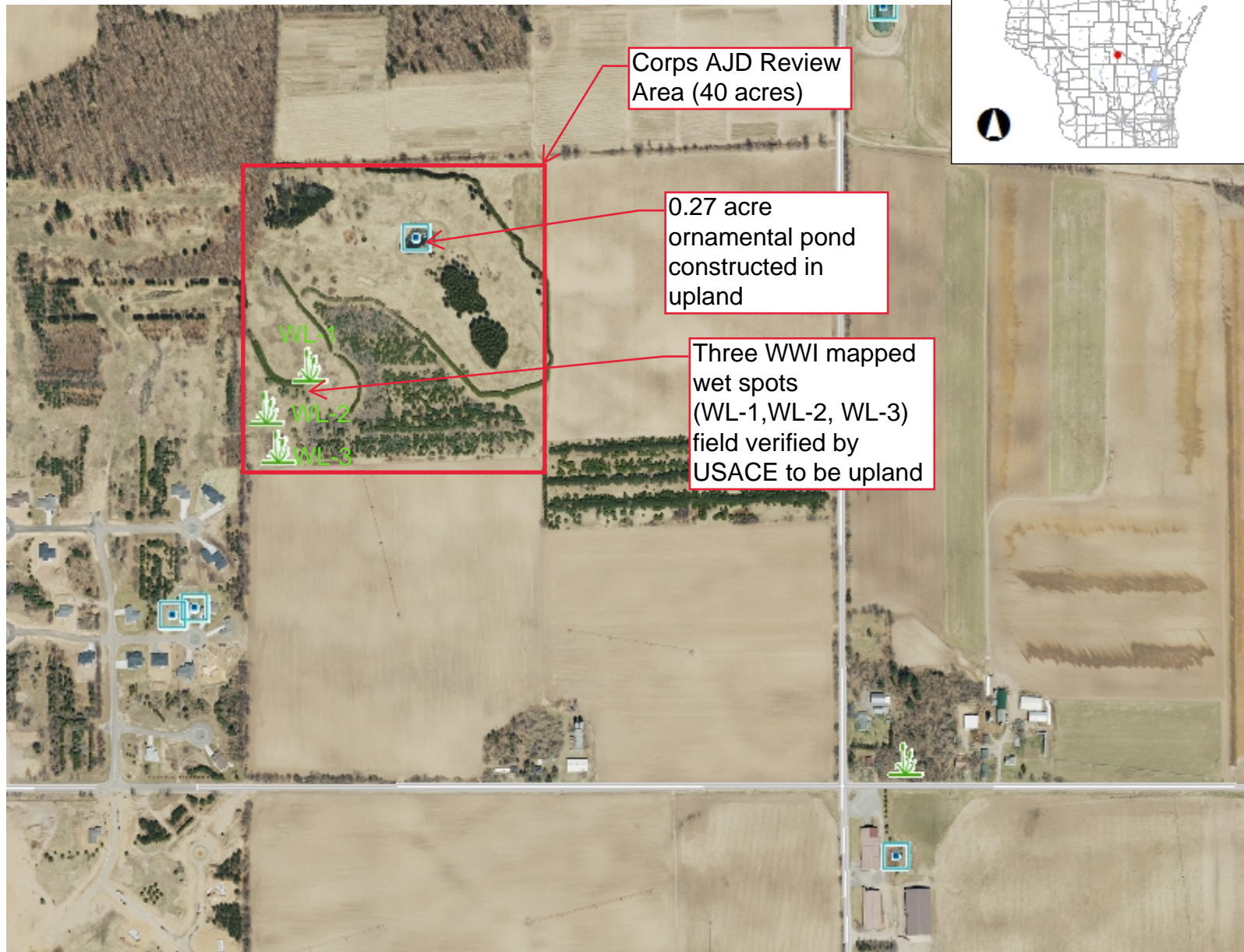
SUBJECT: 2023 Rule, as amended, Approved Jurisdictional Determination in Light of *Sackett v. EPA*, 143 S. Ct. 1322 (2023), [MVP-2023-01156-KDZ](#), [Classic Development Arbor Haven Phase 2](#)

10. OTHER SUPPORTING INFORMATION. [N/A](#)

11. NOTE: The structure and format of this MFR were developed in coordination with the EPA and Department of the Army. The MFR's structure and format may be subject to future modification or may be rescinded as needed to implement additional guidance from the agencies; however, the approved jurisdictional determination described herein is a final agency action.



Surface Water Data Viewer Map



Legend

- Wetland Indicators
- Lake Class Areas
- Riverine/ditch Class Areas
- Wetland Class Areas
- Wetland Class Points**
 - Dammed pond
 - Excavated pond
 - Filled/draind wetland
 - Wetland too small to delineate
 - Filled excavated pond
- Filled Points
- Wetland Class Areas
- Filled Areas
- Lake Class Areas
- Riverine/ditch Class Areas
- Wetland Class Areas
- Wetland Class Points**
 - Dammed pond
 - Excavated pond
 - Filled/draind wetland
 - Wetland too small to delineate
 - Filled excavated pond
- Filled Points
- Wetland Class Areas
- Filled Areas
- Wetland Identifications and Confirmations
- NRCS Wetspots
- Municipality
- State Boundaries
- County Boundaries
- Major Roads**
 - Interstate Highway
 - State Highway
 - US Highway

0.3 0 0.13 0.3 Miles

NAD_1983_HARN_Wisconsin_TM

1: 7,920

DISCLAIMER: The information shown on these maps has been obtained from various sources, and are of varying age, reliability and resolution. These maps are not intended to be used for navigation, nor are these maps an authoritative source of information about legal land ownership or public access. No warranty, expressed or implied, is made regarding accuracy, applicability for a particular use, completeness, or legality of the information depicted on this map. For more information, see the DNR Legal Notices web page: <http://dnr.wi.gov/legal/>

Notes

**Sec. 25, T.23N.,
R.8E., Portage
Co.**