



DEPARTMENT OF THE ARMY
U.S. ARMY CORPS OF ENGINEERS, ST. PAUL DISTRICT
332 MINNESOTA STREET, SUITE E1500
ST. PAUL, MN 55101-1323

February 13, 2024

Regulatory File No. MVP-2024-00130-CCK



Dear [REDACTED]:

This letter regards an approved jurisdictional determination for three mapped potential wetlands (Wetland Areas 1, 2, 3) located on the Bayer property in Section 10, Township 28 North, Range 08 East, Marathon County, Wisconsin. The review area for our jurisdictional determination is identified on the enclosed Figures 1 & 2.

The review area contains no waters of the United States subject to Corps of Engineers (Corps) jurisdiction. Therefore, you are not required to obtain Department of the Army authorization to discharge dredged or fill material within this area. The rationale for this determination is provided in the enclosed Approved Jurisdictional Determination form. You are also cautioned that the area of waters described on the enclosed Jurisdictional Determination form is approximate and is not based on a precise delineation of aquatic resources.

This determination is only valid for the review area shown on the enclosed Figure 1.

The delineation included herein has been conducted to identify the location and extent of the aquatic resources for purposes of the Clean Water Act for the particular site identified in this request. This delineation may not be valid for the Wetland Conservation Provisions of the Food Security Act of 1985, as amended. If you or your tenant are USDA program participants, or anticipate participation in USDA programs, you should discuss the applicability of an NRCS Certified Wetland Determination with the local USDA service center, prior to starting work.

If you object to this approved jurisdictional determination, you may request an administrative appeal under Corps regulations at 33 CFR 331. Enclosed you will find a Notification of Appeal Process (NAP) fact sheet and Request for Appeal (RFA) form. If you request to appeal this determination, you must submit a completed RFA form to the Mississippi Valley Division Office at the address shown on the form.

In order for an RFA to be accepted by the Corps, the Corps must determine that it is complete, that it meets the criteria for appeal under 33 CFR 331.5, and that it has been received by the Division Office within 60 days of the date of the enclosed NAP.

It is not necessary to submit an RFA form to the division office if you do not object to the determination in this letter.

This approved jurisdictional determination may be relied upon for five years from the date of this letter. However, the Corps reserves the right to review and revise the determination in response to changing site conditions, information that was not considered during our initial

review, or off-site activities that could indirectly alter the extent of wetlands and other resources on-site. This determination may be renewed at the end of the five-year period provided you submit a written request and our staff are able to verify that the limits established during the original determination are still accurate.

If you have any questions, please contact me in our St. Paul office at (651) 290-5329 or caree.c.kovacevich@usace.army.mil. In any correspondence or inquiries, please refer to the Regulatory file number shown above.

Sincerely,

Caree Kovacevich

Caree Kovacevich
Senior Project Manager

Enclosures

cc:

[REDACTED]

Robert Hoffman, WIDNR

Wetland Delineation Map

Bayer Property located in the NW1/4, SE1/4, Section 10,
Township 28 North, Range 8 East, Township of Weston,
Marathon County, Wisconsin



Scale: 1" = 180' Unless Noted



This is not a certified survey map

Legend:



Project Boundary



Sample Point

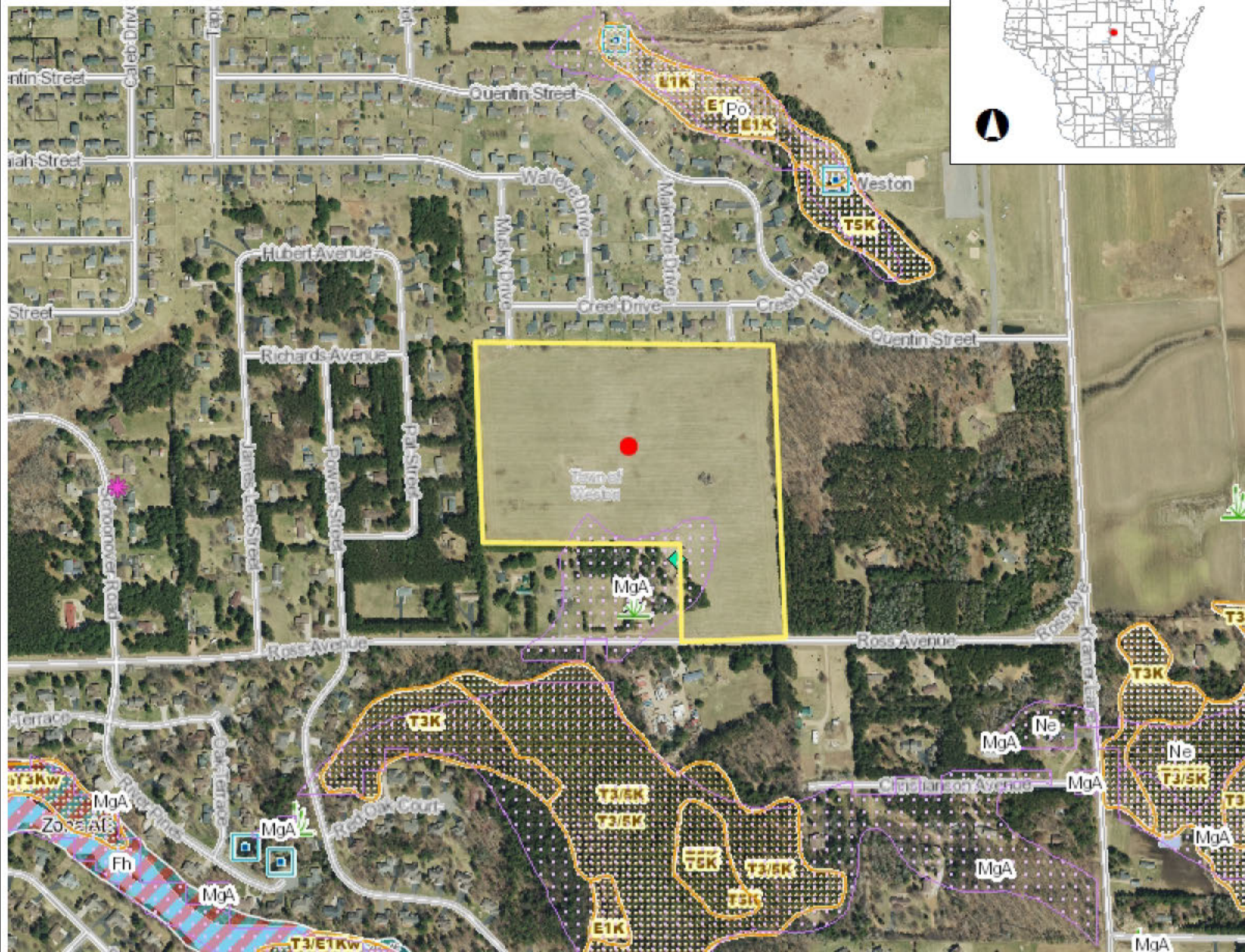


Wetland Boundary

Created By:
Star Environmental, Inc.
PO Box 434 Marathon, WI 54448
Phone: (715) 443-6115
Email: Starenvironmental@hotmail.com



Surface Water Data Viewer Map



Legend

- Wetland Indicators
- Lake Class Areas
- Riverine/ditch Class Areas
- Wetland Class Areas
- Wetland Class Points**
 - Dammed pond
 - Excavated pond
 - Filled/draind wetland
 - Wetland too small to delineate
 - Filled excavated pond
- Filled Points
- Wetland Class Areas
- Filled Areas
- Lake Class Areas
- Riverine/ditch Class Areas
- Wetland Class Areas
- Wetland Class Points**
 - Dammed pond
 - Excavated pond
 - Filled/draind wetland
 - Wetland too small to delineate
 - Filled excavated pond
- Filled Points
- Wetland Class Areas
- Filled Areas
- Wild Rice River and Stream Lines
- Wild Rice Lake Polygons
- Record Flood Levels
- Flood Hazard Boundaries**
 - Limit Lines
 - NP
 - SFHA / Flood Zone Boundary
 - Flowage Easement Boundary
- Flood Hazard Zones**

Notes

0.3 0 0.13 0.3 Miles

NAD_1983_HARN_Wisconsin_TM

1: 7,920

DISCLAIMER: The information shown on these maps has been obtained from various sources, and are of varying age, reliability and resolution. These maps are not intended to be used for navigation, nor are these maps an authoritative source of information about legal land ownership or public access. No warranty, expressed or implied, is made regarding accuracy, applicability for a particular use, completeness, or legality of the information depicted on this map. For more information, see the DNR Legal Notices web page: <http://dnr.wi.gov/legal/>