



**U.S. ARMY CORPS OF ENGINEERS  
REGULATORY PROGRAM  
APPROVED JURISDICTIONAL DETERMINATION FORM (INTERIM)  
NAVIGABLE WATERS PROTECTION RULE**

**I. ADMINISTRATIVE INFORMATION**

Completion Date of Approved Jurisdictional Determination (AJD): 7/31/2020

ORM Number: MVP-2020-01275-JMB

Associated JDs: N/A

Review Area Location<sup>1</sup>: State/Territory: Wisconsin City: Lake Hallie County/Parish/Borough: Chippewa

Center Coordinates of Review Area: Latitude 44.89205 Longitude -91.39257

**II. FINDINGS**

**A. Summary:** Check all that apply. At least one box from the following list MUST be selected. Complete the corresponding sections/tables and summarize data sources.

- ☐ The review area is comprised entirely of dry land (i.e., there are no waters or water features, including wetlands, of any kind in the entire review area). Rationale: N/A or describe rationale.
- ☐ There are "navigable waters of the United States" within Rivers and Harbors Act jurisdiction within the review area (complete table in Section II.B).
- ☐ There are "waters of the United States" within Clean Water Act jurisdiction within the review area (complete appropriate tables in Section II.C).
- ☒ There are waters or water features excluded from Clean Water Act jurisdiction within the review area (complete table in Section II.D).

**B. Rivers and Harbors Act of 1899 Section 10 (§ 10)<sup>2</sup>**

§ 10 Name	§ 10 Size	§ 10 Criteria	Rationale for § 10 Determination
N/A.	N/A.	N/A.	N/A.

**C. Clean Water Act Section 404**

Territorial Seas and Traditional Navigable Waters ((a)(1) waters): <sup>3</sup>				
(a)(1) Name	(a)(1) Size	(a)(1) Criteria	Rationale for (a)(1) Determination	
N/A.	N/A.	N/A.	N/A.	

Tributaries ((a)(2) waters):				
(a)(2) Name	(a)(2) Size	(a)(2) Criteria	Rationale for (a)(2) Determination	
N/A.	N/A.	N/A.	N/A.	

Lakes and ponds, and impoundments of jurisdictional waters ((a)(3) waters):				
(a)(3) Name	(a)(3) Size	(a)(3) Criteria	Rationale for (a)(3) Determination	
N/A.	N/A.	N/A.	N/A.	

Adjacent wetlands ((a)(4) waters):				
(a)(4) Name	(a)(4) Size	(a)(4) Criteria	Rationale for (a)(4) Determination	
N/A.	N/A.	N/A.	N/A.	

<sup>1</sup> Map(s)/figure(s) are attached to the AJD provided to the requestor.

<sup>2</sup> If the navigable water is not subject to the ebb and flow of the tide or included on the District's list of Rivers and Harbors Act Section 10 navigable waters list, do NOT use this document to make the determination. The District must continue to follow the procedure outlined in 33 CFR part 329.14 to make a Rivers and Harbors Act Section 10 navigability determination.

<sup>3</sup> A stand-alone TNW determination is completed independently of a request for an AJD. A stand-alone TNW determination is conducted for a specific segment of river or stream or other type of waterbody, such as a lake, where upstream or downstream limits or lake borders are established. A stand-alone TNW determination should be completed following applicable guidance and should NOT be documented on the AJD Form.



**U.S. ARMY CORPS OF ENGINEERS  
REGULATORY PROGRAM  
APPROVED JURISDICTIONAL DETERMINATION FORM (INTERIM)  
NAVIGABLE WATERS PROTECTION RULE**

**D. Excluded Waters or Features**

Excluded waters ((b)(1) – (b)(12)). <sup>4</sup>				
Exclusion Name	Exclusion Size		Exclusion <sup>5</sup>	Rationale for Exclusion Determination
Area 2	0.01	acre(s)	(b)(1) Non-adjacent wetland.	The subject waters do not meet the definition of “adjacent wetlands”. A review of available resources confirmed the wetlands investigated are located within enclosed depressions that have no surface water connections to intermittent or perennial tributaries. The investigated wetlands are physically removed from the nearest A(1)-A(3) water, and there is no evidence that they are directly abutting an A(1) – A(3) water. The investigated wetlands were determined to be hydrologically isolated and are therefore not regulated by the Corps under Section 404 of the Clean Water Act.
Area 3	0.024			

**III. SUPPORTING INFORMATION**

**A. Select/enter all resources** that were used to aid in this determination and attach data/maps to this document and/or references/citations in the administrative record, as appropriate.

☒ Information submitted by, or on behalf of, the applicant/consultant: [Application materials dated 7 July 2020](#)

This information [is](#) sufficient for purposes of this AJD.

Rationale: [N/A](#)

- ☐ Data sheets prepared by the Corps: [Title\(s\) and/or date\(s\)](#).
- ☒ Photographs: [Other: Site photos in December 2019 Wetland Delineation Report](#)
- ☐ Corps site visit(s) conducted on: [Date\(s\)](#).
- ☐ Previous Jurisdictional Determinations (AJDs or PJDs): [ORM Number\(s\) and date\(s\)](#).
- ☐ Antecedent Precipitation Tool: [provide detailed discussion in Section III.B.](#)
- ☒ USDA NRCS Soil Survey: [Web Soil Survey](#)
- ☒ USFWS NWI maps: [Wetlands Mapper – 24 July 2020](#)
- ☒ USGS topographic maps: [1:24K Quad - Hallie](#)

**Other data sources used to aid in this determination:**

Data Source (select)	Name and/or date and other relevant information
<a href="#">USGS Sources</a>	<a href="#">N/A.</a>
<a href="#">USDA Sources</a>	<a href="#">N/A.</a>
<a href="#">NOAA Sources</a>	<a href="#">N/A.</a>
<a href="#">USACE Sources</a>	<a href="#">N/A.</a>
<a href="#">State/Local/Tribal Sources</a>	<a href="#">N/A.</a>
<a href="#">Other information (specify)</a>	<a href="#">Chippewa County LiDAR elevations</a>

<sup>4</sup> Some excluded waters, such as (b)(2) and (b)(4), may not be specifically identified on the AJD form unless a requestor specifically asks a Corps district to do so. Corps districts may, in case-by-case instances, choose to identify some or all of these waters within the review area.

<sup>5</sup> Because of the broad nature of the (b)(1) exclusion and in an effort to collect data on specific types of waters that would be covered by the (b)(1) exclusion, four sub-categories of (b)(1) exclusions were administratively created for the purposes of the AJD Form. These four sub-categories are not new exclusions, but are simply administrative distinctions and remain (b)(1) exclusions as defined by the NWPR.



**U.S. ARMY CORPS OF ENGINEERS  
REGULATORY PROGRAM  
APPROVED JURISDICTIONAL DETERMINATION FORM (INTERIM)  
NAVIGABLE WATERS PROTECTION RULE**

**B. Typical year assessment(s):** [N/A](#)

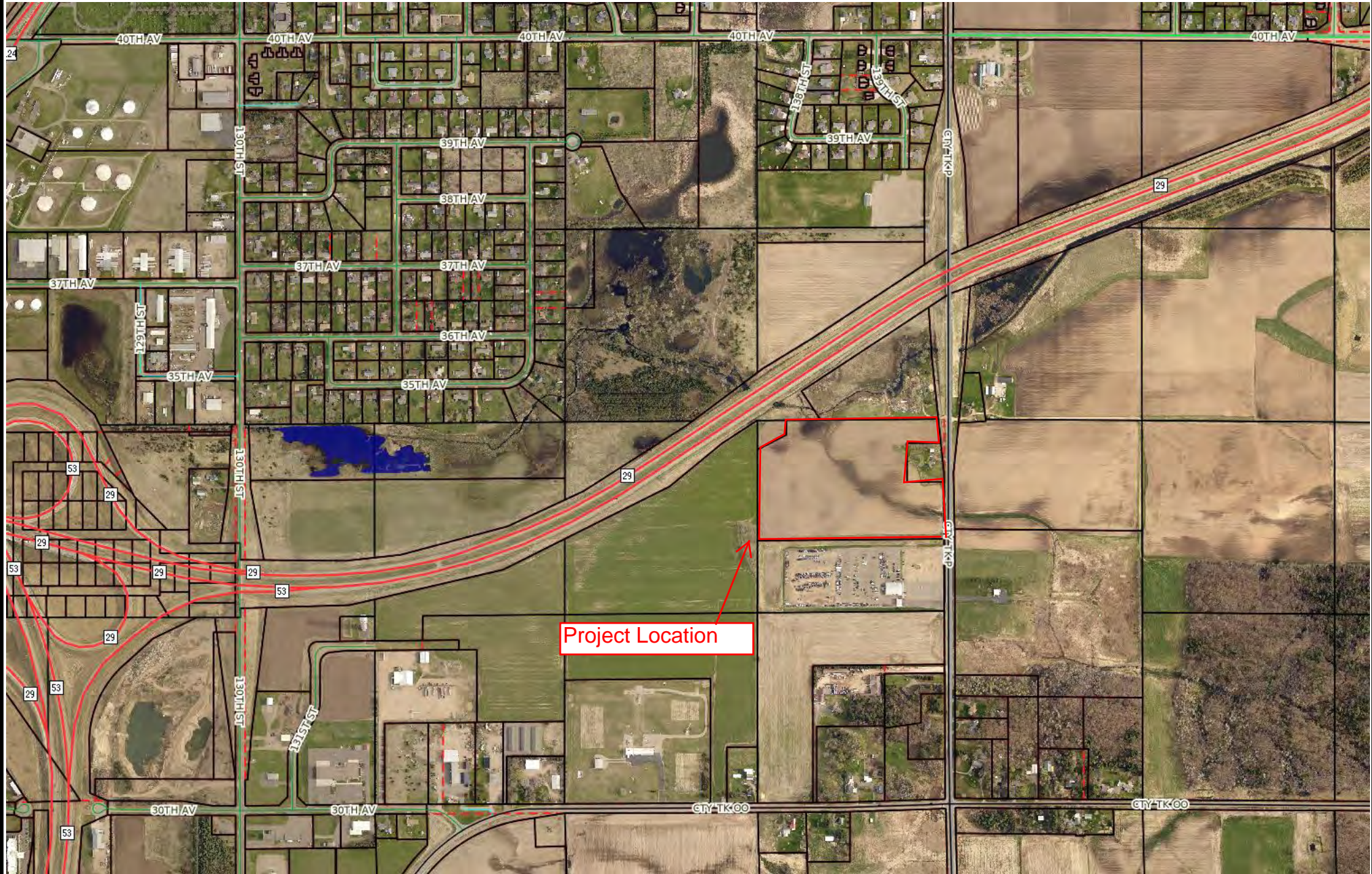
**C. Additional comments to support AJD:** [N/A](#)



# Location Map

Printed 12/31/2019

Scale = 1:884'



Project Location

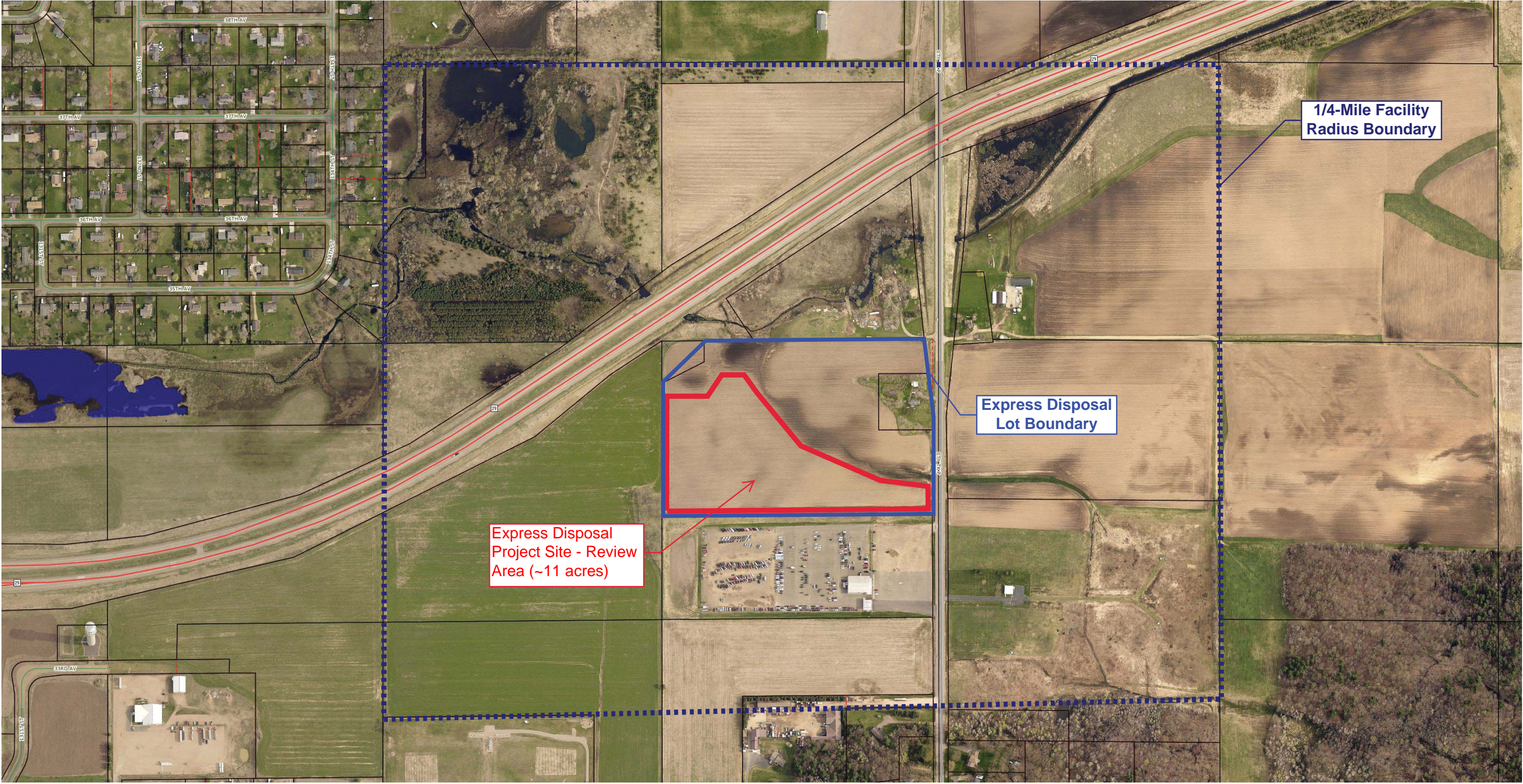
**Disclaimer:** This map is a compilation of records as they appear in the Chippewa County Offices affecting the area shown and is to be used only for reference purposes.



# Express Disposal - Aerial

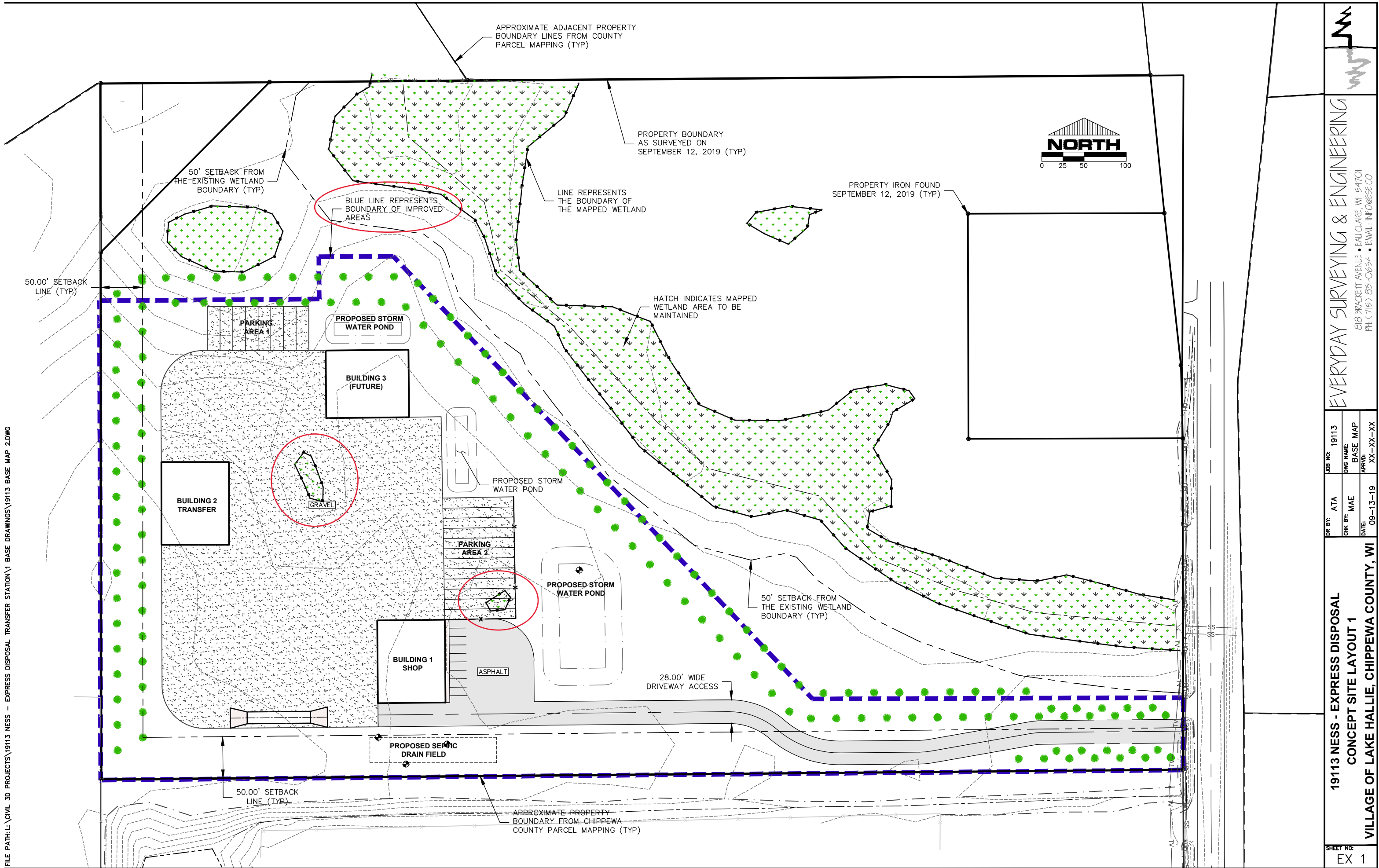


Printed 03/11/2020      Scale = 1:443'





FILE PATH: L:\CIVIL 3D PROJECTS\19113 NESS - EXPRESS DISPOSAL TRANSFER STATION\1 BASE DRAWINGS\19113 BASE MAP 2.DWG

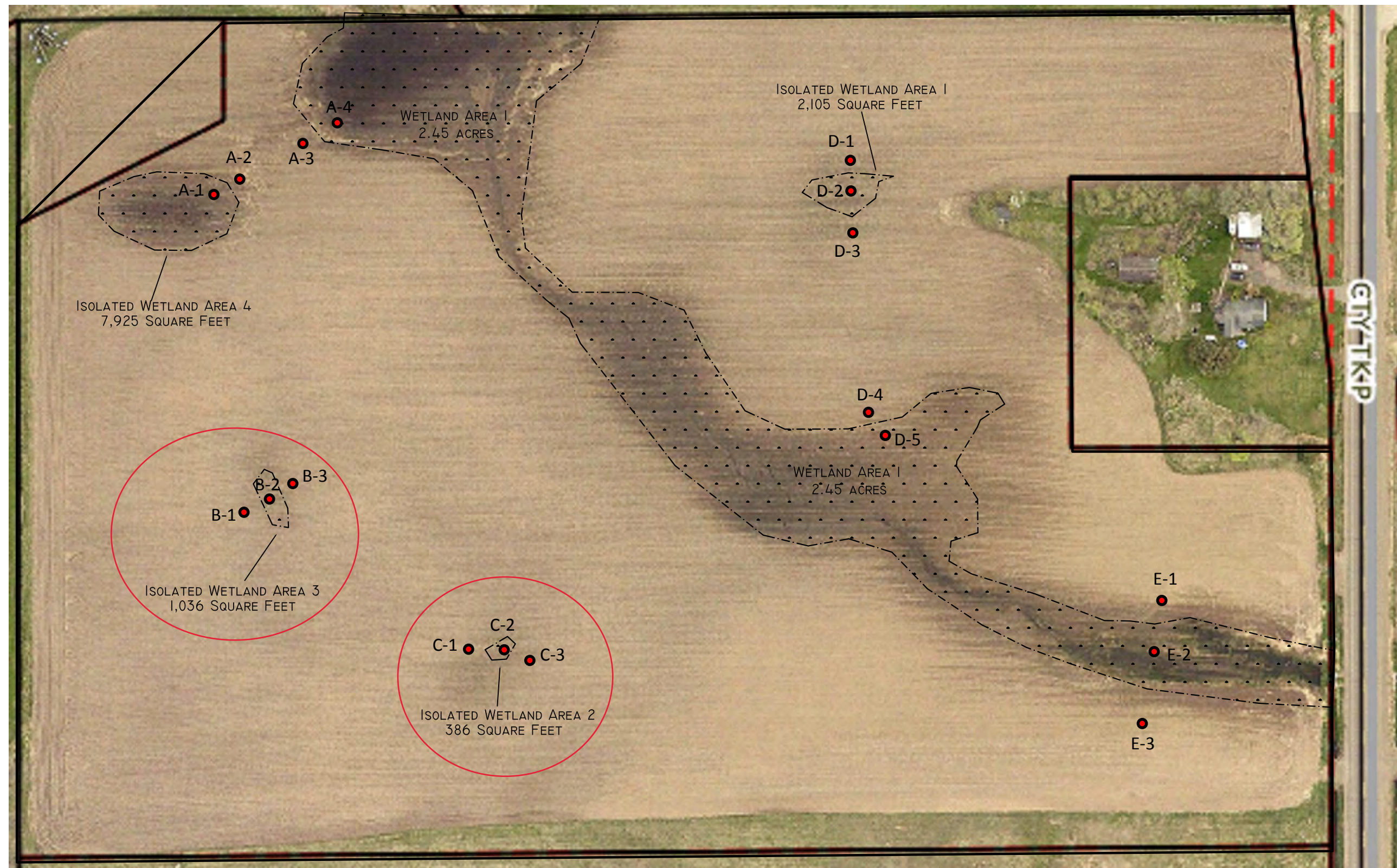




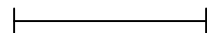


# WETLAND DELINEATION MAP

EXPRESS DISPOSAL TRANSFER STATION SITE LOCATED IN THE NE1/4, SE1/4, SECTION 19,  
TOWNSHIP 28 NORTH - RANGE 8 EAST, VILLAGE OF LAKE HALLIE, CHIPPEWA COUNTY, WISCONSIN



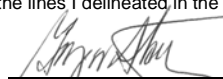
SCALE: 1" = 100' UNLESS NOTED



THIS IS NOT A CERTIFIED SURVEY MAP

## Wetland Map Certification Statement

I, Gary W. Starzinski, Licensed Professional Soil Scientist, WDNR  
Professionally Assured Wetland Delineator, Star Environmental, Inc.,  
hereby state that the wetlands shown on this map are representative  
of the lines I delineated in the field.




  
Gary W. Starzinski

December 31, 2019

Date



## LEGEND:

-  WETLAND BOUNDARY
-  PROJECT BOUNDARY
-  SAMPLE POINT

CREATED BY:  
STAR ENVIRONMENTAL, INC.  
PO Box 434 MARATHON, WI 54448  
PHONE: (715) 443-6115  
FAX: (715) 443-6108  
EMAIL: STARENVIRONMENTAL@HOTMAIL.COM  
MVP-2020-01275-JMB Page 4 of 4