



DEPARTMENT OF THE ARMY
U.S. ARMY CORPS OF ENGINEERS, ST. PAUL DISTRICT
332 MINNESOTA STREET, SUITE E1500
ST. PAUL, MN 55101-1323

December 11, 2023

Regulatory File No. MVP-2015-00048-RJH



Dear [REDACTED]:

This letter is in regard to an approved jurisdictional determination for a 14.08-acre property located in Section 18, Township 07 North, Range 14 East, Jefferson County, Wisconsin. The review area for our jurisdictional determination is identified on the enclosed Figures labeled MVP-2015-00048-RJH Page 1 of 2 through Page 2 of 2.

The review area contains no waters of the United States subject to Corps of Engineers (Corps) jurisdiction. Therefore, you are not required to obtain Department of the Army authorization to discharge dredged or fill material within this area. The rationale for this determination is provided in the enclosed Approved Jurisdictional Determination form. You are also cautioned that the area of waters described on the enclosed Jurisdictional Determination form is approximate and is not based on a precise delineation of aquatic resources.

If you object to this approved jurisdictional determination, you may request an administrative appeal under Corps regulations at 33 CFR 331. Enclosed you will find a Notification of Appeal Process (NAP) fact sheet and Request for Appeal (RFA) form. If you request to appeal this determination, you must submit a completed RFA form to the Mississippi Valley Division Office at the address shown on the form.

In order for an RFA to be accepted by the Corps, the Corps must determine that it is complete, that it meets the criteria for appeal under 33 CFR 331.5, and that it has been received by the Division Office within 60 days of the date of the enclosed NAP.

It is not necessary to submit an RFA form to the division office if you do not object to the determination in this letter.

This approved jurisdictional determination may be relied upon for five years from the date of this letter. However, the Corps reserves the right to review and revise the determination in response to changing site conditions, information that was not considered during our initial review, or off-site activities that could indirectly alter the extent of wetlands and other resources on-site. This determination may be renewed at the end of the five year period provided you submit a written request and our staff are able to verify that the limits established during the original determination are still accurate.

Regulatory Division (File No. 2015-00048-RJH)

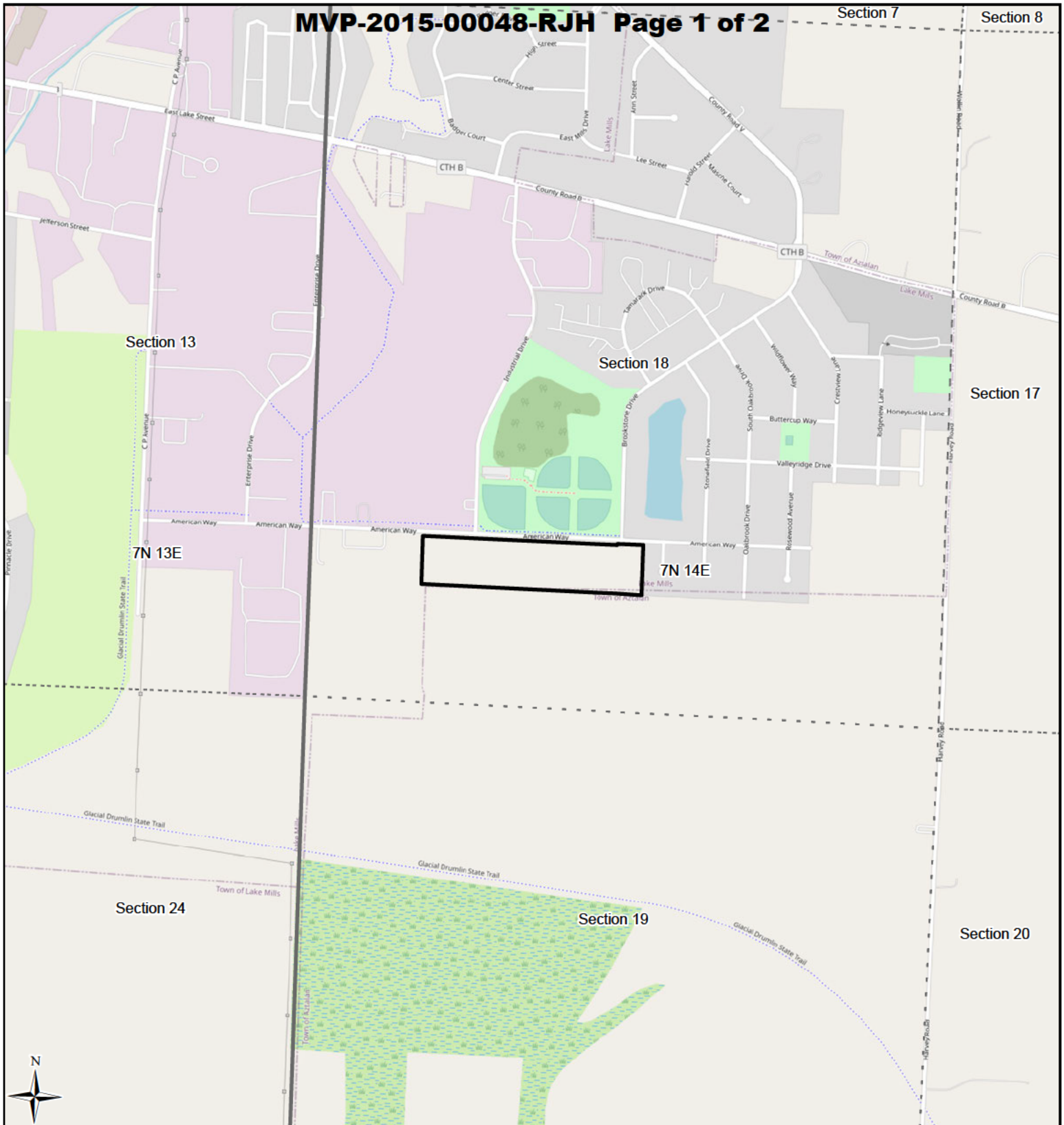
If you have any questions, please contact me in our Green Bay office at
[REDACTED] In any correspondence or inquiries, please
refer to the Regulatory file number shown above.

Sincerely,

[REDACTED]

Enclosures

cc:
WDNR



- Study Area (14.08 ac)
- Township
- Section

0 510 1,020
Ft

Heartland
ECOLOGICAL GROUP INC

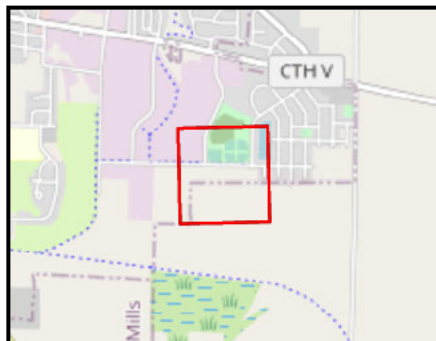
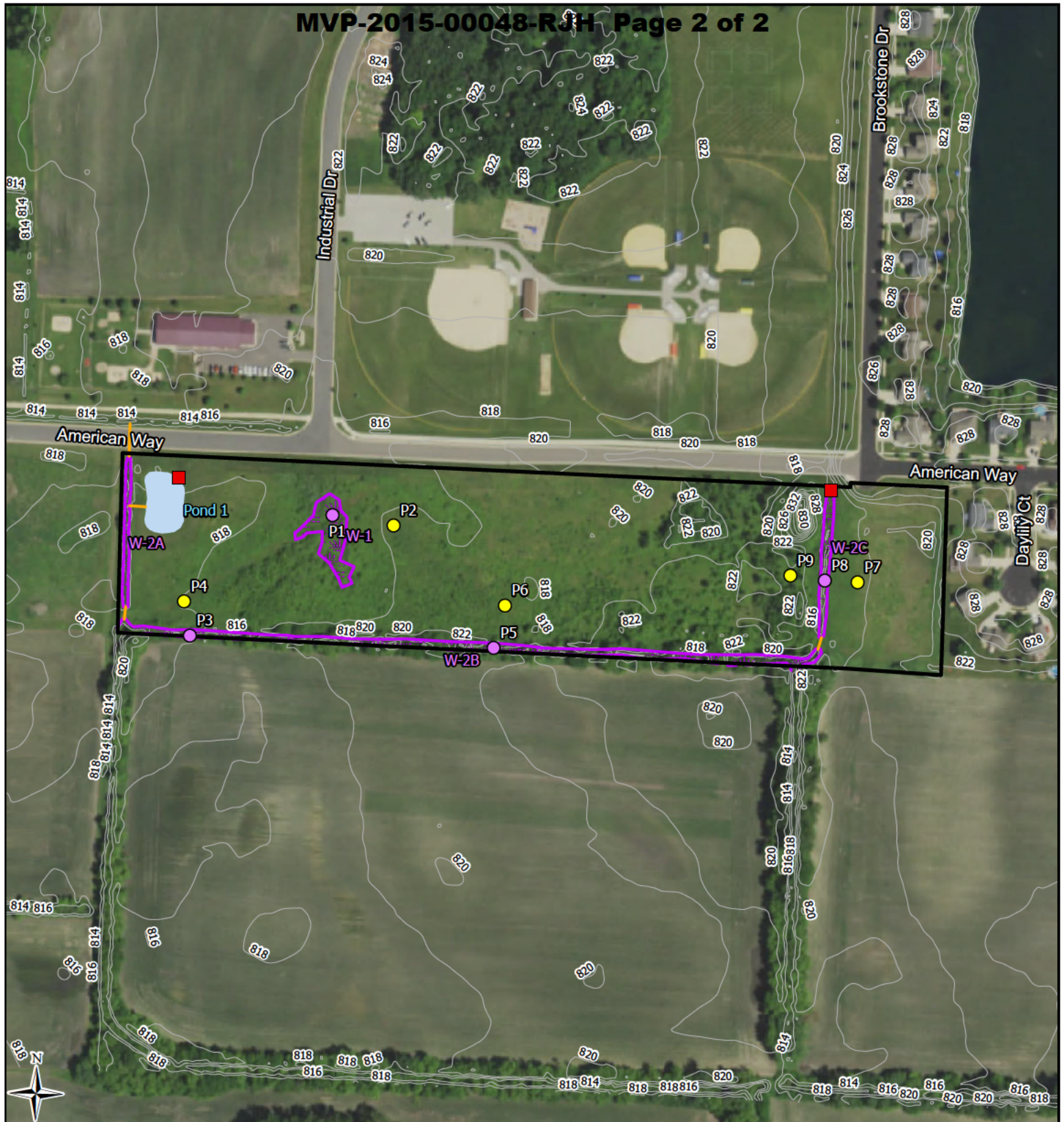
Figure 1. Project Location

Riverwood Holdings
Project #20231000
T7N, R14E, S18
C Lake Mills, Jefferson Co

OpenStreetMap
ESRI

LRR: NCNE

Figure Created: 6/16/2023



- Study Area (14.08 ac)
 - Field Delineated Wetland (0.85 ac)
 - Pond (0.20 ac)
 - Culvert
 - Off-site Wetland Boundary
 - Jefferson Co 2' Contours
 - Culvert Outlet
- Sample Points**
- Upland
 - Wetland

0 250
Ft

Heartland
ECOLOGICAL GROUP INC

Figure 7. Field Delineated Wetlands
Riverwood Holdings
Project #20231000
T7N, R14E, S18
C Lake Mills, Jefferson Co

2022 NAIP
Jefferson Co, HEG LRR: NCNE
Figure Created: 7/3/2023