



DEPARTMENT OF THE ARMY
U.S. ARMY CORPS OF ENGINEERS, ST. PAUL DISTRICT
332 MINNESOTA STREET, SUITE E1500
ST. PAUL, MN 55101-1323

February 12, 2024

Regulatory File No. 2022-02274-TKO



Dear [REDACTED]

This letter is in regard to an approved jurisdictional determination for portions of the 160-acre Waste Management Metro RDF Landfill site located in Section 31, Township 05 North, Range 21 East, Milwaukee County, Wisconsin. The review areas for our jurisdictional determination are identified on the enclosed figures, labeled 2022-02274-TKO Figure 1-2 of 2.

The review areas contain no waters of the United States subject to Corps of Engineers (Corps) jurisdiction. Therefore, you are not required to obtain Department of the Army authorization to discharge dredged or fill material within these areas. The rationale for this determination is provided in the enclosed Approved Jurisdictional Determination Memorandum for Record (MFR). You are also cautioned that the area of waters described on the enclosed Jurisdictional Determination MFR is approximate and is not based on a precise delineation of aquatic resources.

This determination is only valid for the review area shown on the enclosed figures, labeled 2022-02274-TKO Figure 1-2 of 2.

The delineation included herein has been conducted to identify the location and extent of the aquatic resources for purposes of the Clean Water Act for the particular site identified in this request. This delineation may not be valid for the Wetland Conservation Provisions of the Food Security Act of 1985, as amended. If you or your tenant are USDA program participants, or anticipate participation in USDA programs, you should discuss the applicability of an NRCS Certified Wetland Determination with the local USDA service center, prior to starting work.

If you object to this approved jurisdictional determination, you may request an administrative appeal under Corps regulations at 33 CFR 331. Enclosed you will find a Notification of Appeal Process (NAP) fact sheet and Request for Appeal (RFA) form. If you request to appeal this determination, you must submit a completed RFA form to the Mississippi Valley Division Office at the address shown on the form.

In order for an RFA to be accepted by the Corps, the Corps must determine that it is complete, that it meets the criteria for appeal under 33 CFR 331.5, and that it has been received by the Division Office within 60 days of the date of the enclosed NAP.

It is not necessary to submit an RFA form to the division office if you do not object to the determination in this letter.

This approved jurisdictional determination may be relied upon for five years from the date of this letter. However, the Corps reserves the right to review and revise the determination in response to changing site conditions, information that was not considered during our initial review, or off-site activities that could indirectly alter the extent of wetlands and other resources on-site. This determination may be renewed at the end of the five year period provided you submit a written request and our staff are able to verify that the limits established during the original determination are still accurate.

If you have any questions, please contact me in our Green Bay office at [REDACTED] In any correspondence or inquiries, please refer to the Regulatory file number shown above.

Sincerely,

A large black rectangular redaction box covering the signature of the Project Manager.

Project Manager

Enclosures:

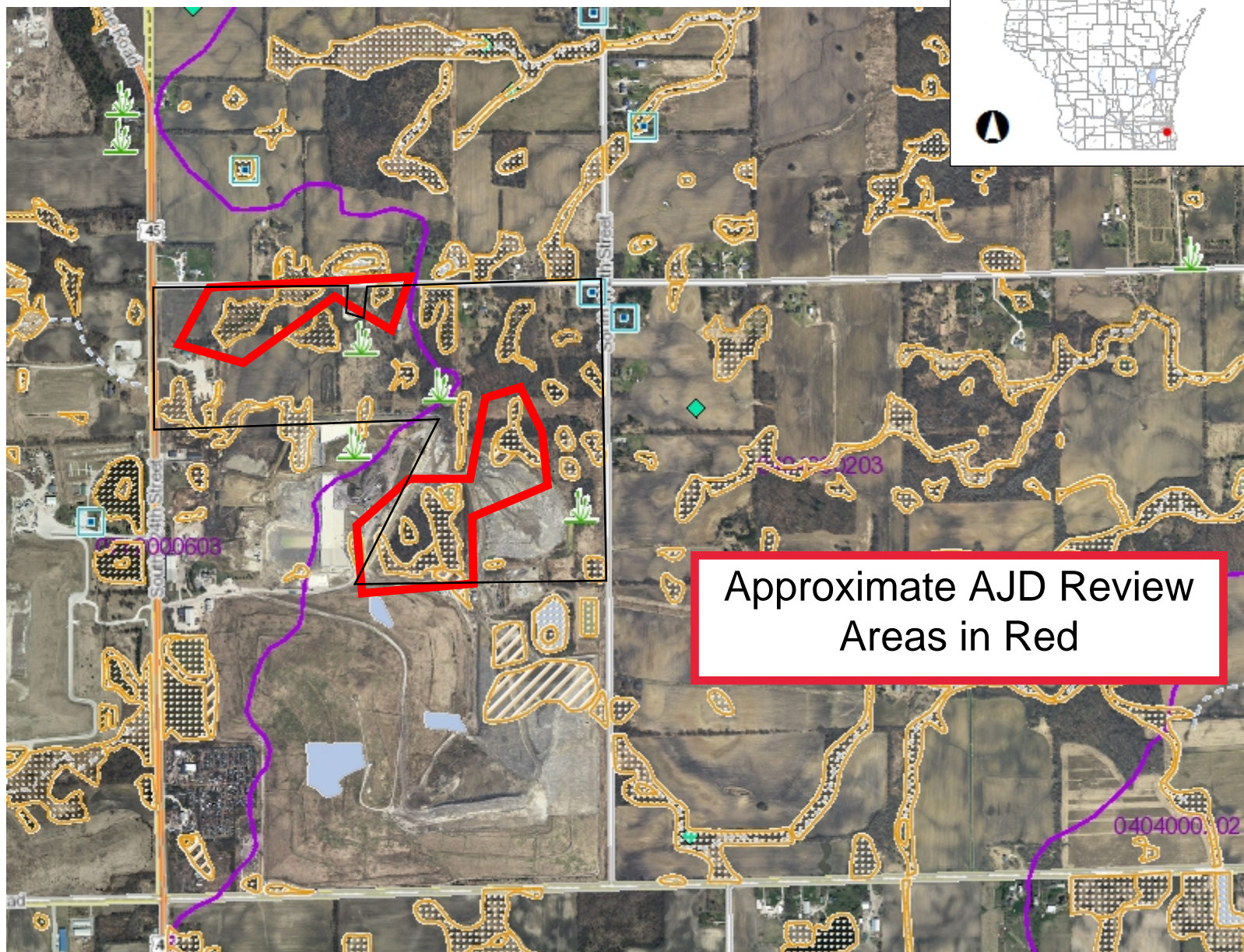
Approved Jurisdictional Determination Figures 2022-02274-TKO Figure 1-2, Approved Jurisdictional Determination Memorandum for Record, Request for Appeal

cc:

[REDACTED] – WI DNR



2022-02274-TKO Figure 1



Approximate AJD Review
Areas in Red

Legend

- Lake Class Areas
- Riverine/ditch Class Areas
- Wetland Class Areas
- Wetland Class Points
 - Dammed pond
 - Excavated pond
 - Filled/draind wetland
 - Wetland too small to delineate
 - Filled excavated pond
- Filled Points
- Wetland Class Areas
- Filled Areas
- Lake Class Areas
- Riverine/ditch Class Areas
- Wetland Class Areas
- Wetland Class Points
 - Dammed pond
 - Excavated pond
 - Filled/draind wetland
 - Wetland too small to delineate
 - Filled excavated pond
- Filled Points
- Wetland Class Areas
- Filled Areas
- Wetland Identifications and Confirmations
- 10-digit HUCs (Watersheds)
- Municipality
- State Boundaries
- County Boundaries
- Major Roads
 - Interstate Highway
 - State Highway
 - US Highway
 - County and Local Roads

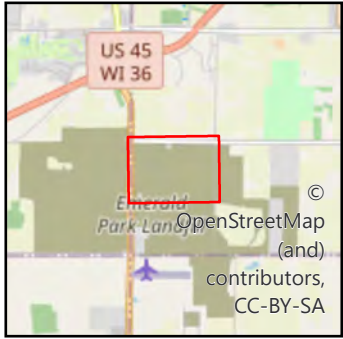
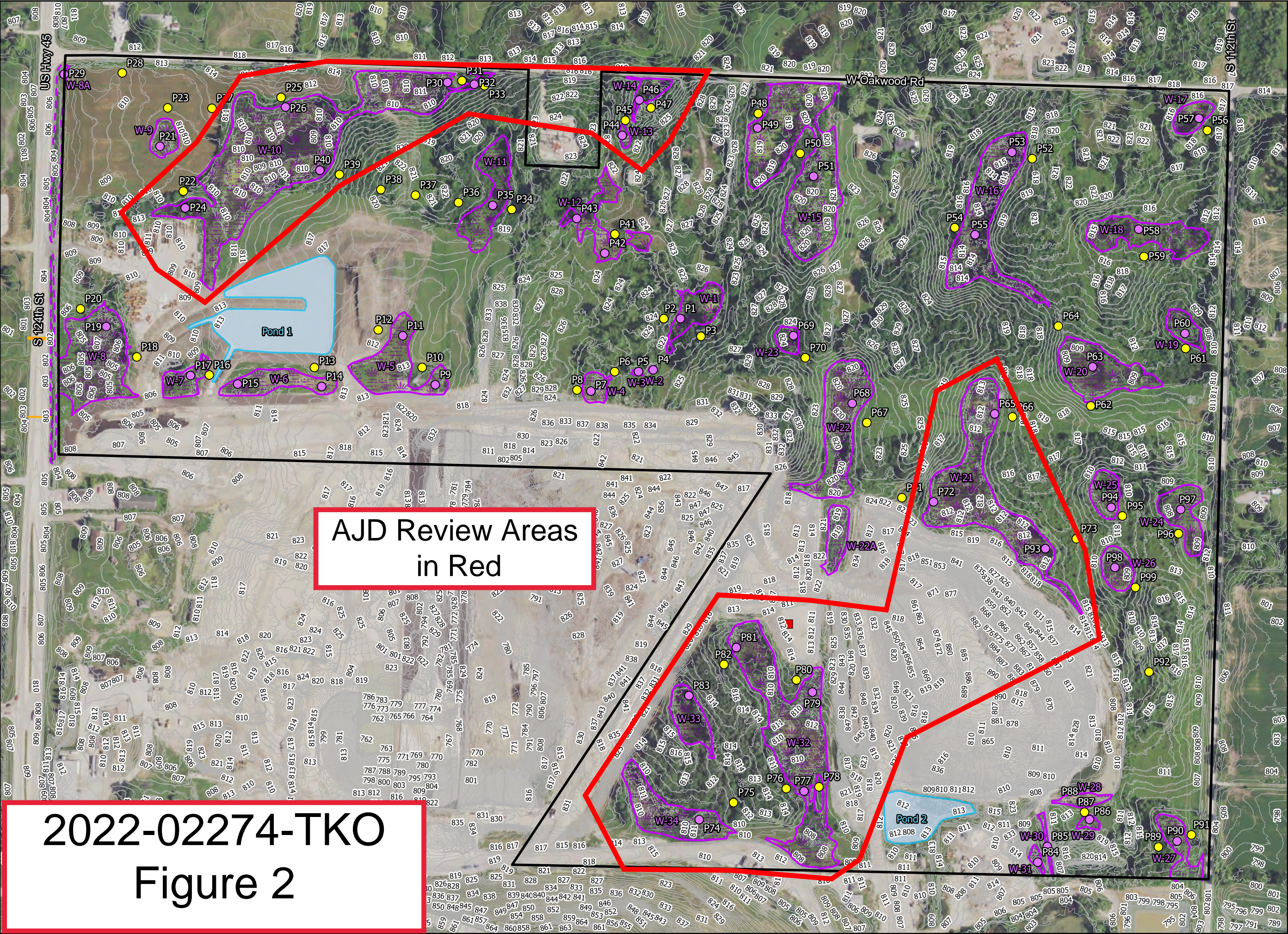
0.5 0 0.25 0.5 Miles

NAD_1983_HARN_Wisconsin_TM

1: 15,840

DISCLAIMER: The information shown on these maps has been obtained from various sources, and are of varying age, reliability and resolution. These maps are not intended to be used for navigation, nor are these maps an authoritative source of information about legal land ownership or public access. No warranty, expressed or implied, is made regarding accuracy, applicability for a particular use, completeness, or legality of the information depicted on this map. For more information, see the DNR Legal Notices web page: <http://dnr.wi.gov/legal/>

Notes



- Study Area (178.55 ac)
 - Field Delineated Wetland (26.22 ac)
 - Waterbody (3.01 ac)
 - Culvert
 - Milwaukee Co. 1' Contours
 - Off-site Wetland Boundary
 - Filled Pond
- Sample Points**
- Upland
 - Wetland

0 150 300
Ft

Heartland
ECOLOGICAL GROUP INC

Figure 6. Field Delineated Wetlands
Metro RFD Oakwood Expansion
Project #20220810
T5N, R21E, S31
C Franklin, Milwaukee Co

2020 NAIP
Milwaukee Co, HEG

LRR: MW